



GMP Weekly Newsletter

November 15th, 2010
Vol. 1, Issue 15

Upcoming Events

- **Thanksgiving Break**
University Holiday
(November 24-27)
- **Final Exams**
***Actual schedule depends on your classes*
(December 13-18)
- **Classes Begin Again**
(January 10th)

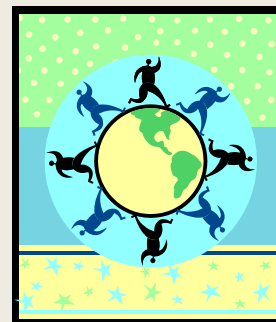
What's New This Week??

*******NO MONDAY MUNCHIES TODAY!!*******

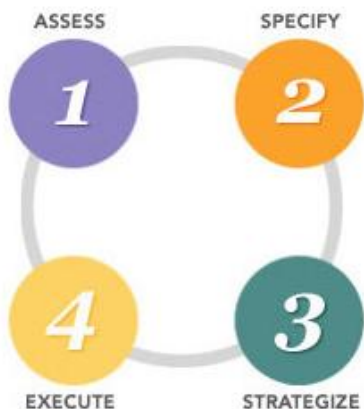
There will be NO MONDAY MUNCHIES TODAY!! We will see you next week for Monday Munchies!! Have a great week!

*******February Cultural Celebration*******

As mentioned in previous newsletters, February's GMP meeting will be a Cultural Celebration. As you go home for the holidays, think about what traditions, foods, crafts, etc., that you could share with your fellow GMP women! Country/Region 'leaders' will be in contact with you soon to start organizing who will bring and do what for each country!



ASU CareerWISE



An NSF-ASU Initiative Offers Support to Female Doctoral Students

Do you find that completing your Ph.D. is sometimes overwhelming? Looking for advice on how to balance everything as a female engineering student? On November 4, ASU launched CareerWISE to help coach and support female students in science, technology, engineering and math. The website offers coping strategies for overcoming the often difficult academic environment as well as balancing priorities.

For more information or to sign up:
<http://careerwise.asu.edu/>

Feature of the Week: International Education Week

November 15-19th is International Education week, a joint initiative of the US departments of State and Education. The purpose of the week is to support and promote programs to encourage Americans to learn more about other cultures and to emphasize good global citizenship. Events on Purdue's campus will be:

- Student testimonials from Study Abroad at 7:30AM and 4:30PM on WBAA AM 920 or 101.3 FM the whole week
- International Food Festival, 11:30AM-1:30PM on Nov. 16 in Lilly Hall Lobby. FREE FOOD SAMPLES!!
- Global Trivia Challenge, 6:30PM on Nov. 18 in KRAN G-010
- Global Café, "Aiding Each Other in Society According to Abrahamic Tradition", 6PM on Nov. 19 in Lawson Hall, Rm. 1142



For More Information:

<http://www.lafayette-online.com/purdue-news/2010/11/international-education-week/>

Shivangi Kelkar
skelkar@purdue.edu



Meet
a WIEP
GM Peep!

Department: ABE

Role in GMP: GWG Ambassador

Hometown: Mumbai, India

Favorite GMP Thing: Interesting talks and good food!

Favorite Purdue Thing: Meeting people from all over the world

Hobbies: Travelling, music, reading, hiking

Chocolate or Vanilla? Chocolate...any day!

Favorite Color: Purple

Something Interesting About Shivangi: She scans things like bread, brownies, dingdongs, etc., on MRIs and CTs as part of her research!

Something Most People Don't

Know About Shivangi: She likes collecting magnets—she has 55+ magnets on her fridge from all of the places she has visited the last few years!

