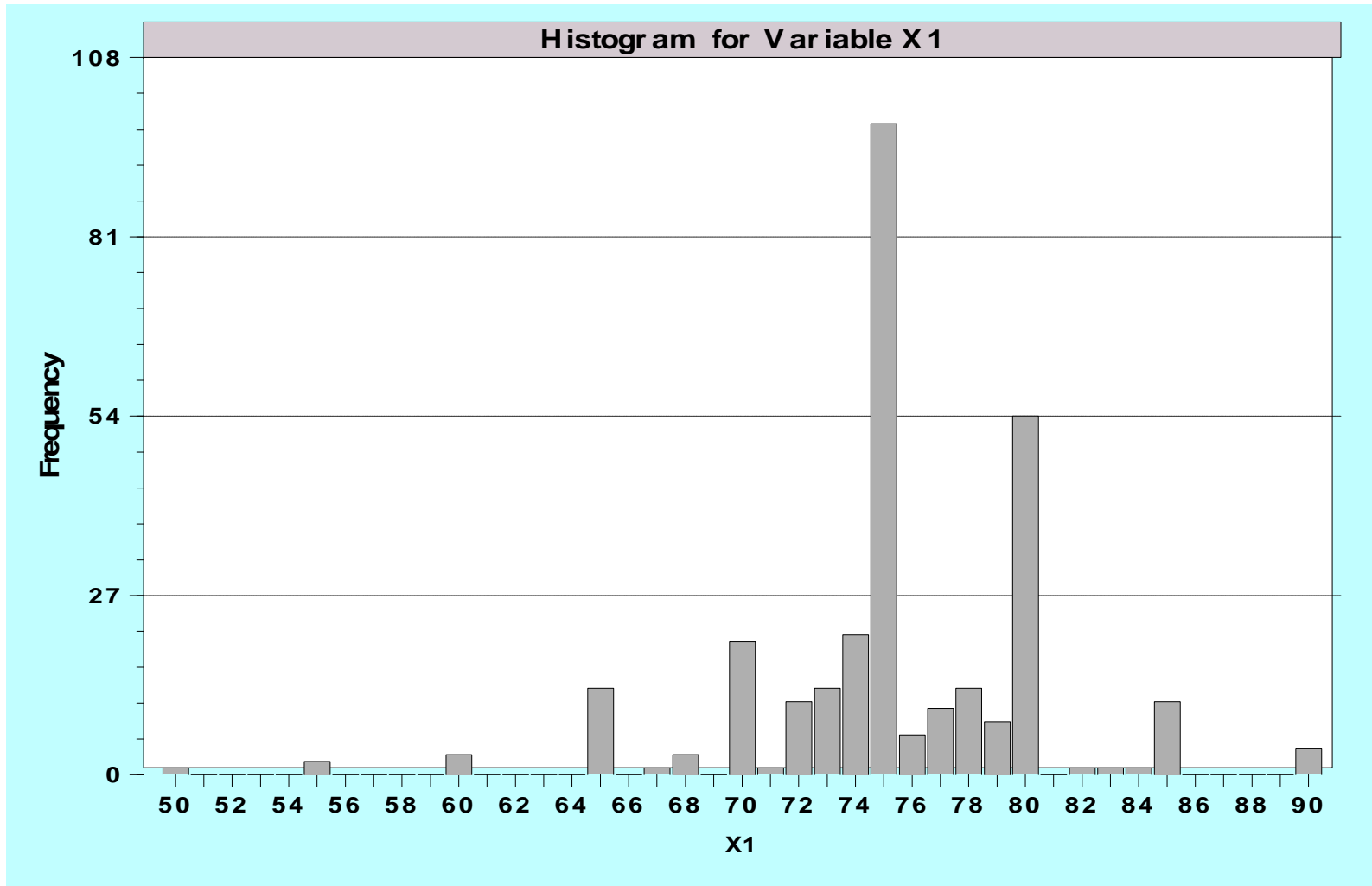
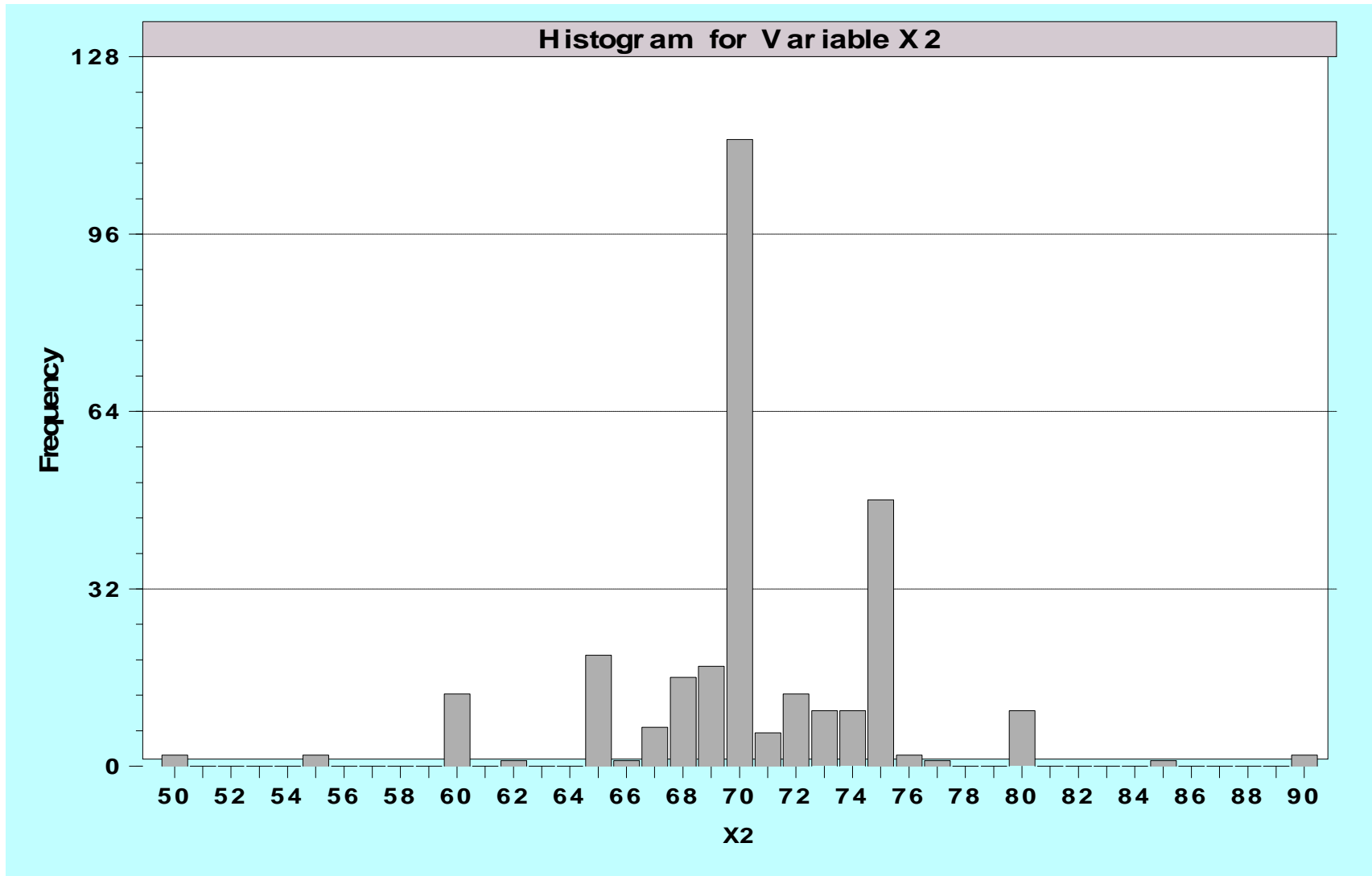


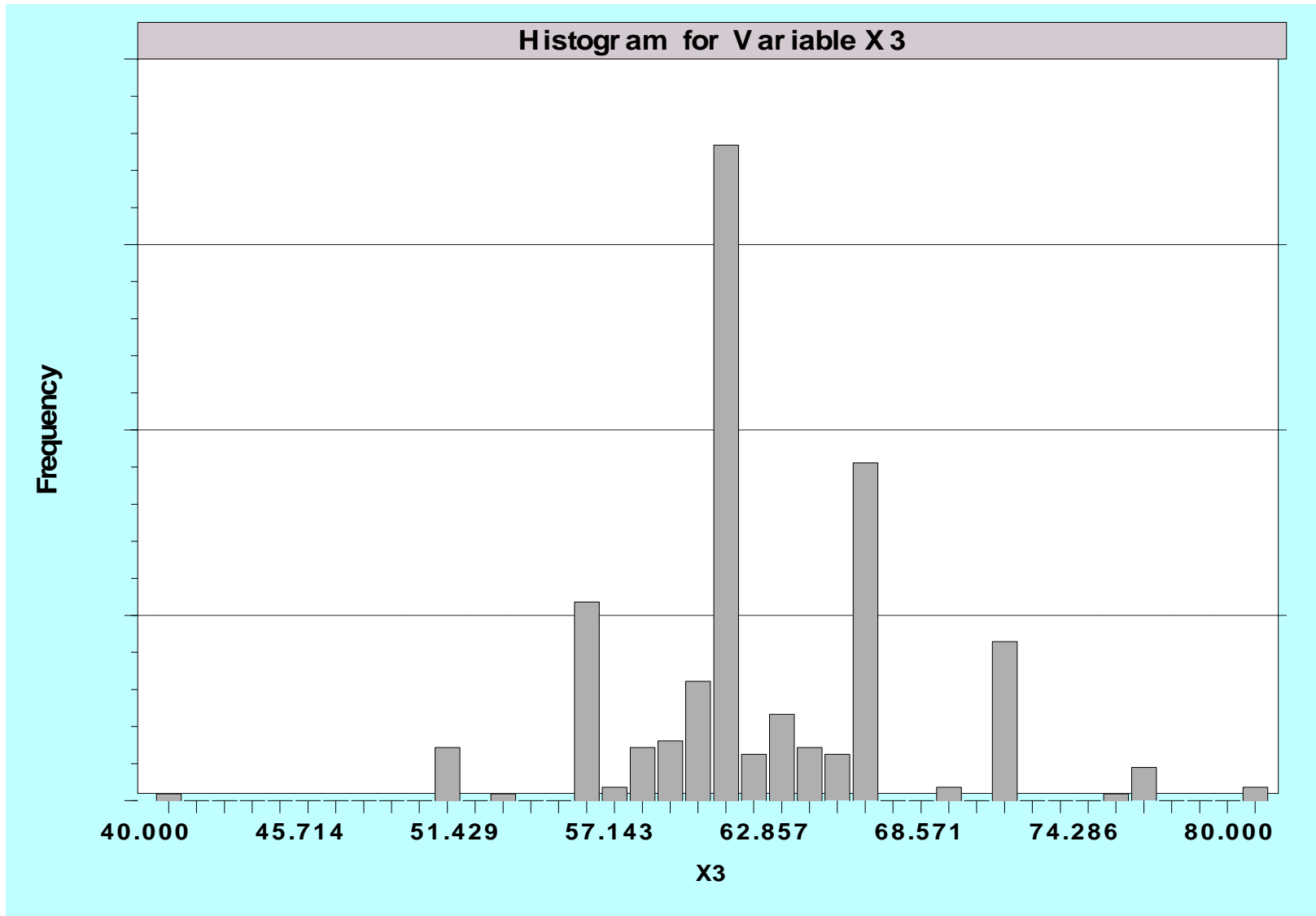
1. On an interstate with a 70mph speed limit and little traffic, about how fast do you normally drive? _____mph



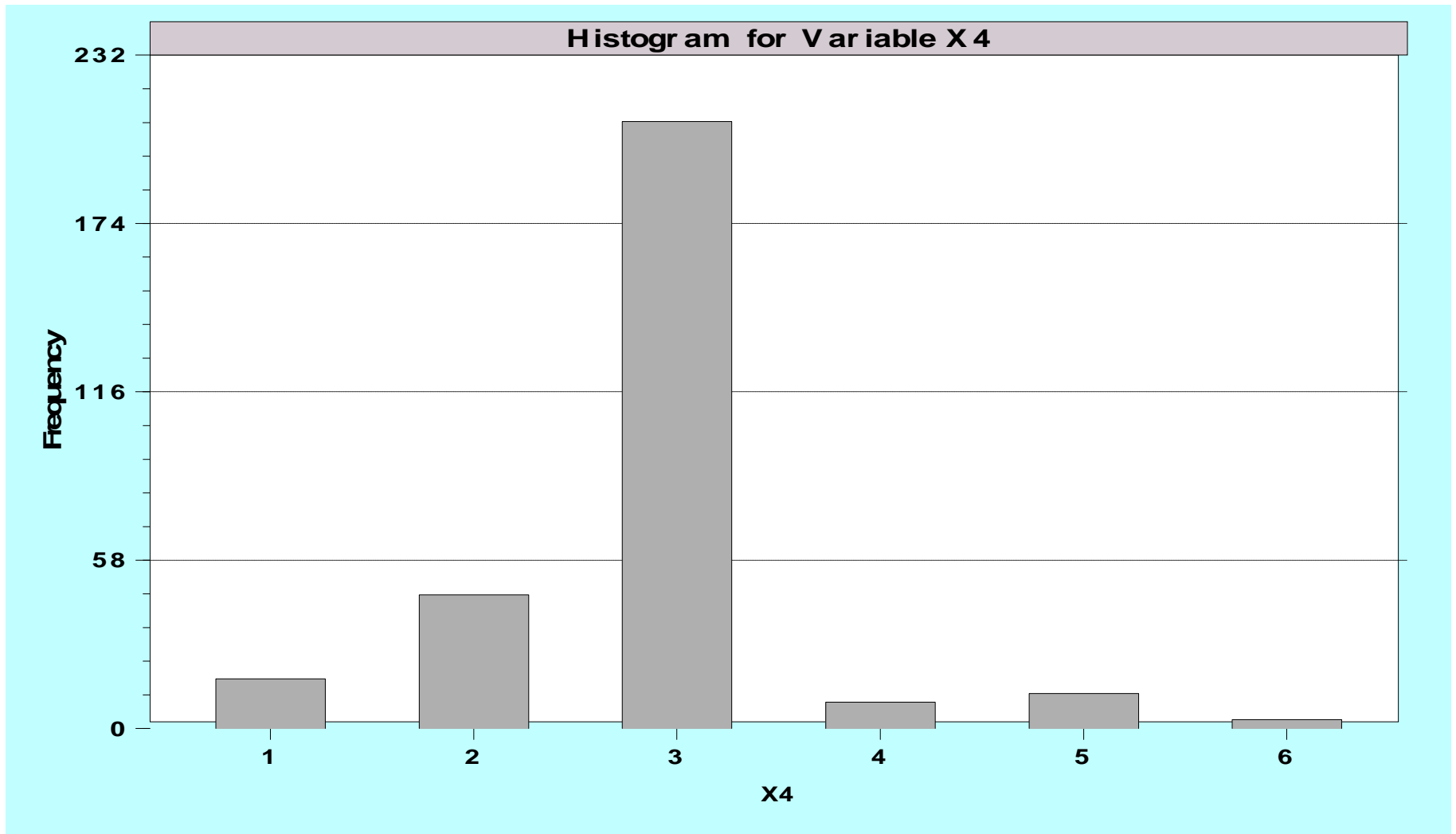
2. On an interstate with a 65mph speed limit and little traffic, about how fast do you normally drive? _____mph



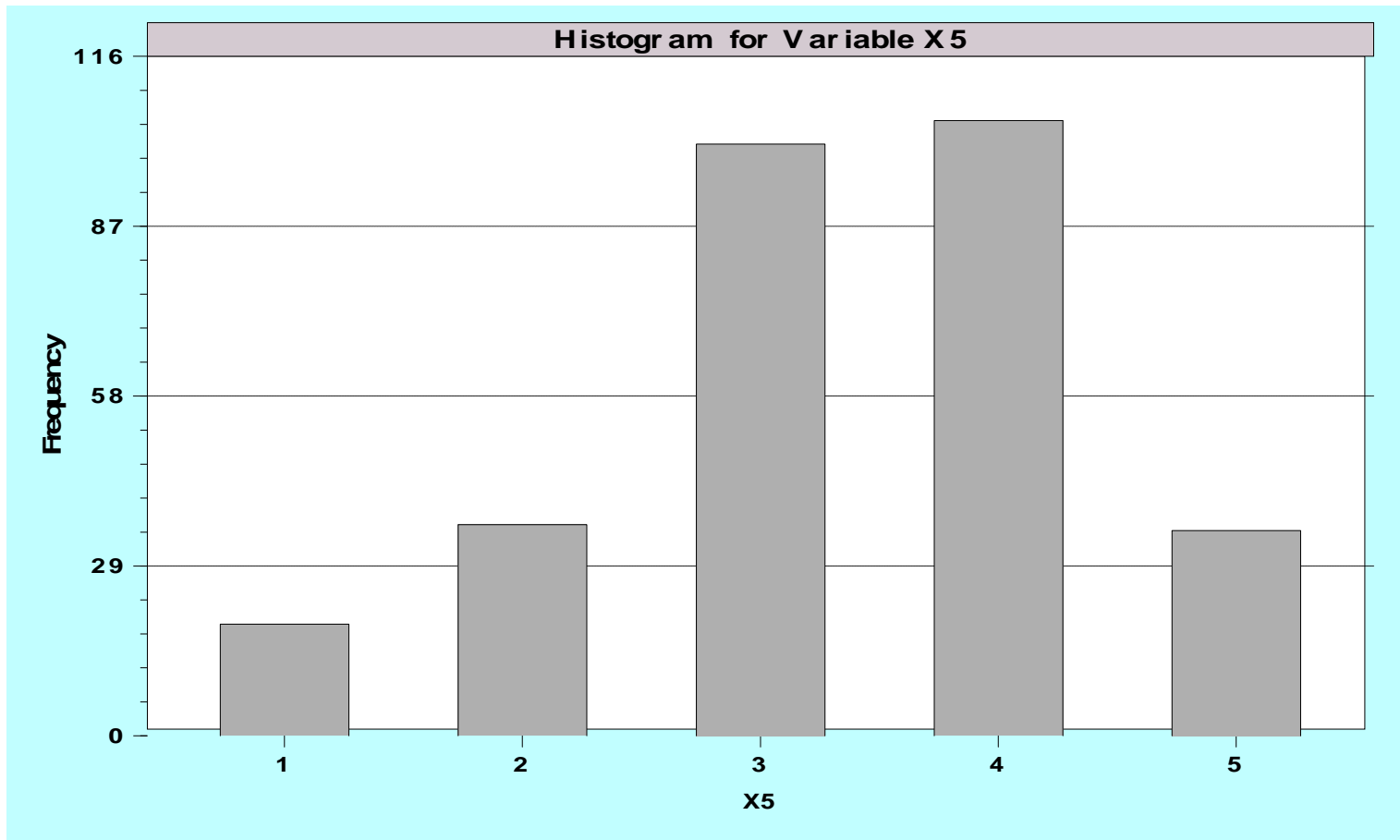
3. On an interstate with a 55mph speed limit and little traffic, about how fast do you normally drive? _____mph



4. When approaching a traffic signal which is green initially but turns yellow, what do you do most of the time?
- Brake hard and slow down Accelerate and cross the signal Depends how far the signal is
 Depends on what other drivers do Not sure/varies I do not drive

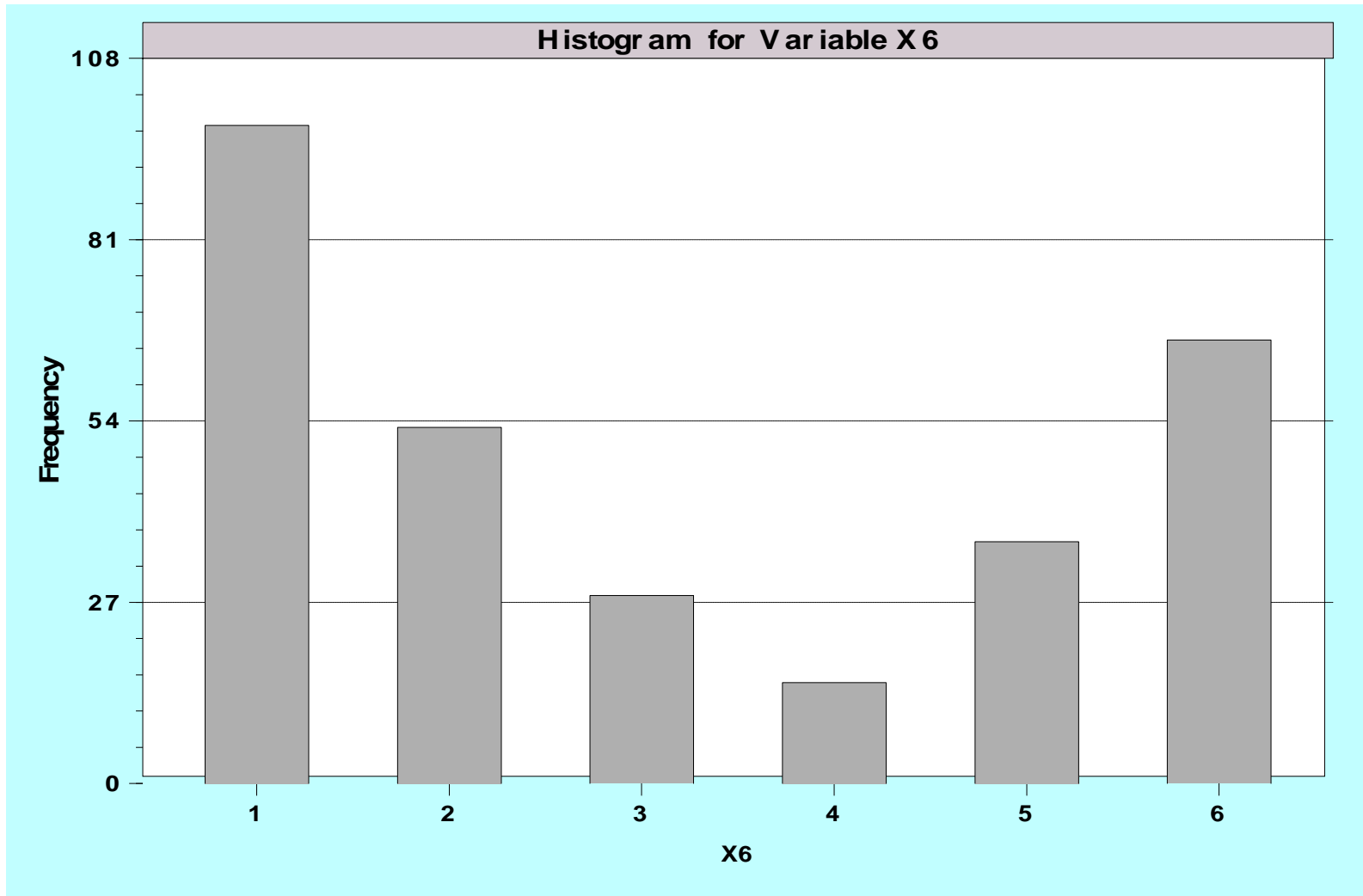


5. Please give your opinion of the following statement: "Nuclear energy is a viable option for meeting the United States' future energy demands"?
- ___ Strongly disagree ___ Disagree ___ Neutral ___ Agree ___ Strongly agree



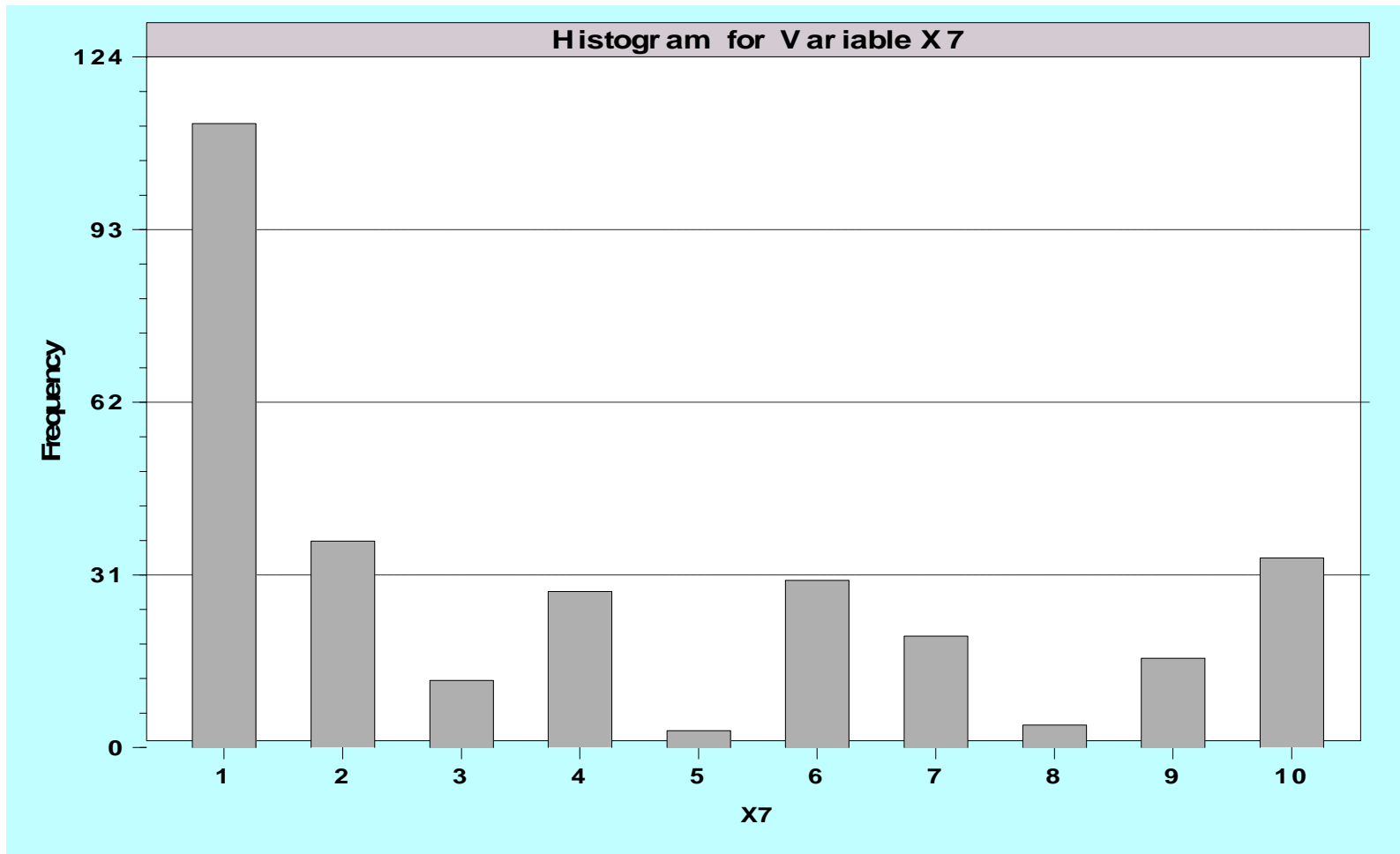
6. Do you use safety equipment when you ride a bike?

___ Never ___ Seldom ___ Sometimes ___ Often ___ Almost Always ___ I do not ride

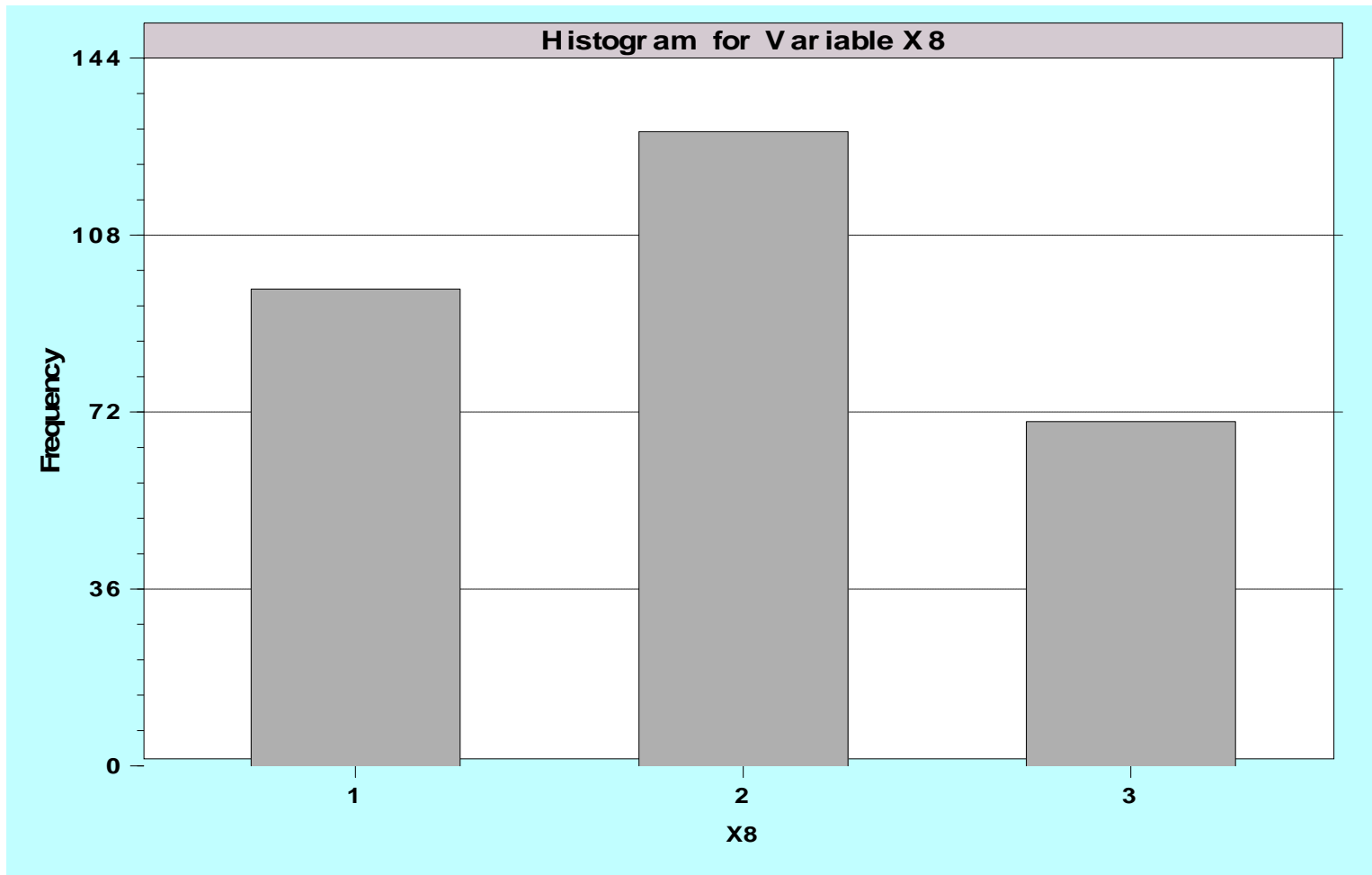


7. What brand of athletic shoe do you relate to the most?

Nike Adidas Reebok New balance Converse Asics
 Puma Under armor Other No preference

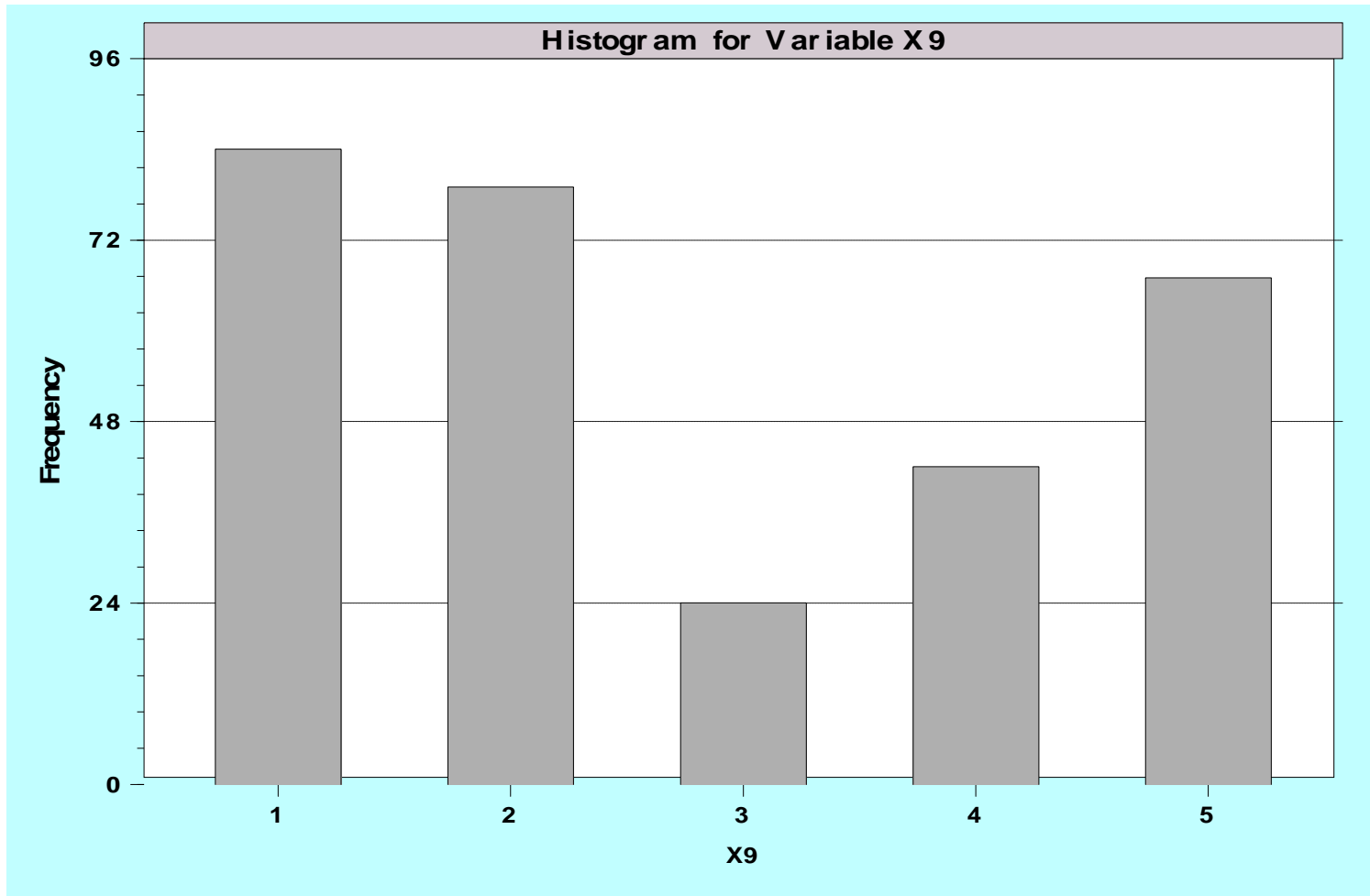


8. Do you think President Obama will be re-elected to a second term in office? ___Yes ___No ___Unsure

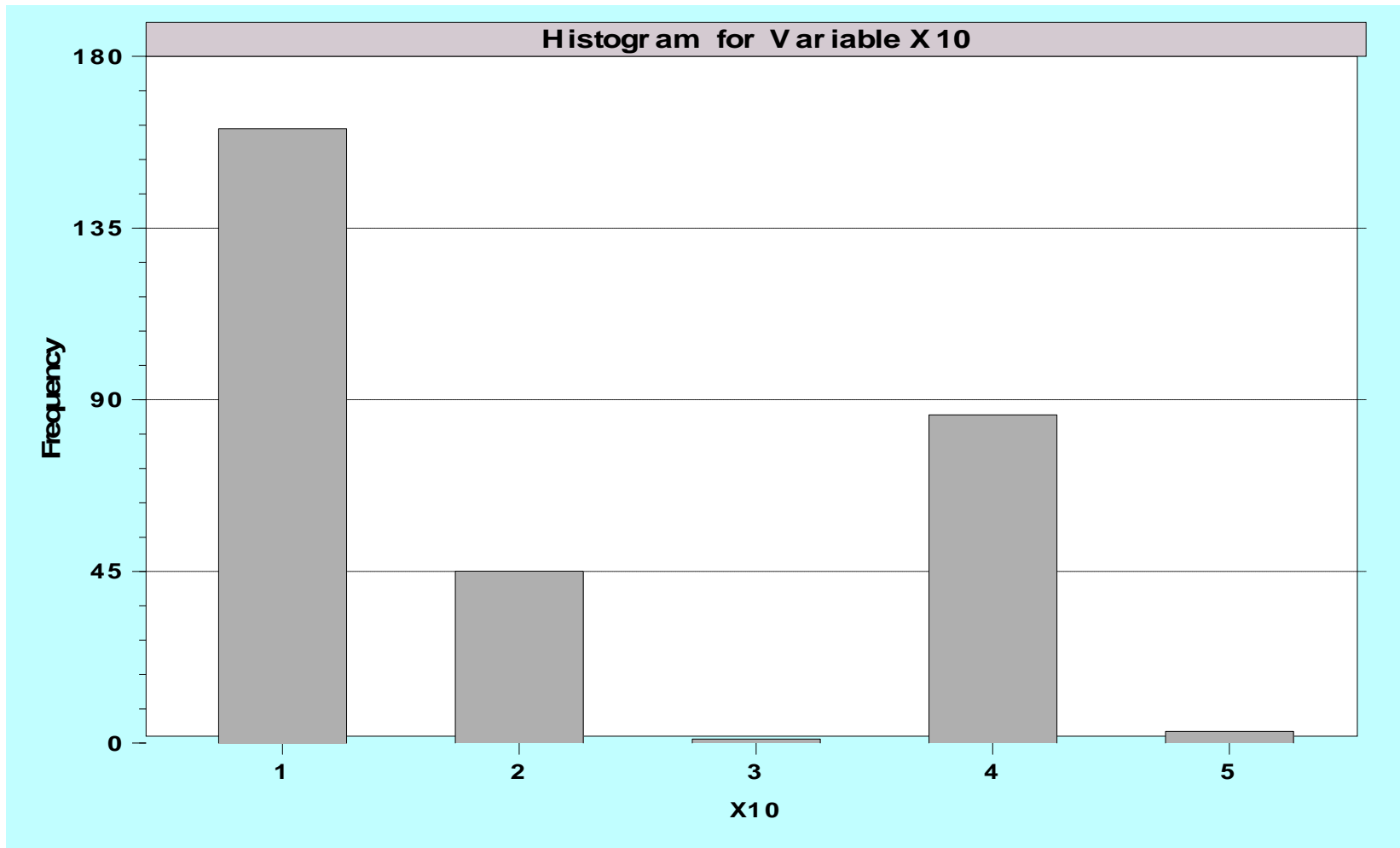


9. What is your favorite flavor of ice cream?

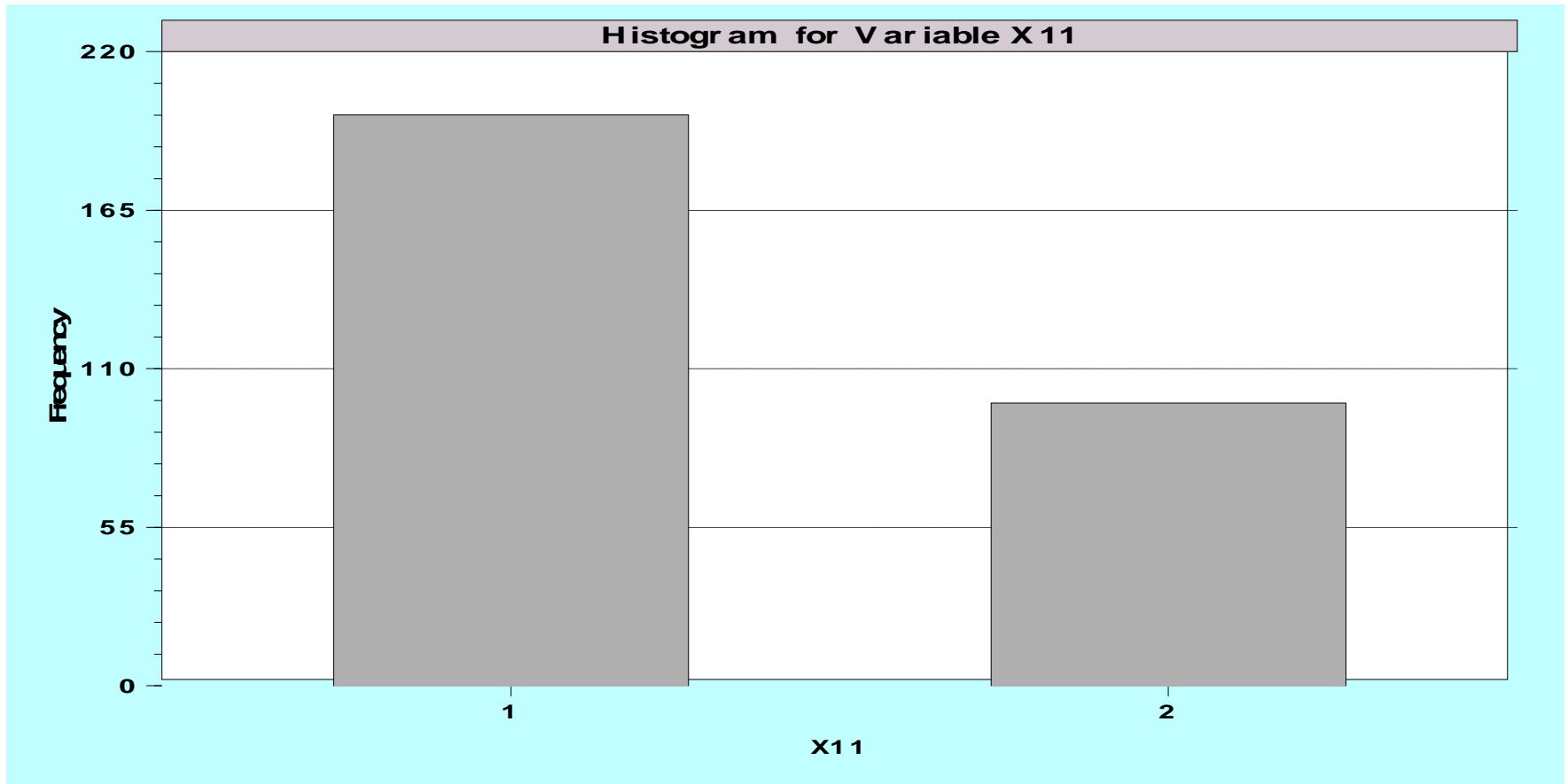
Vanilla Chocolate Strawberry Cookies and cream Other



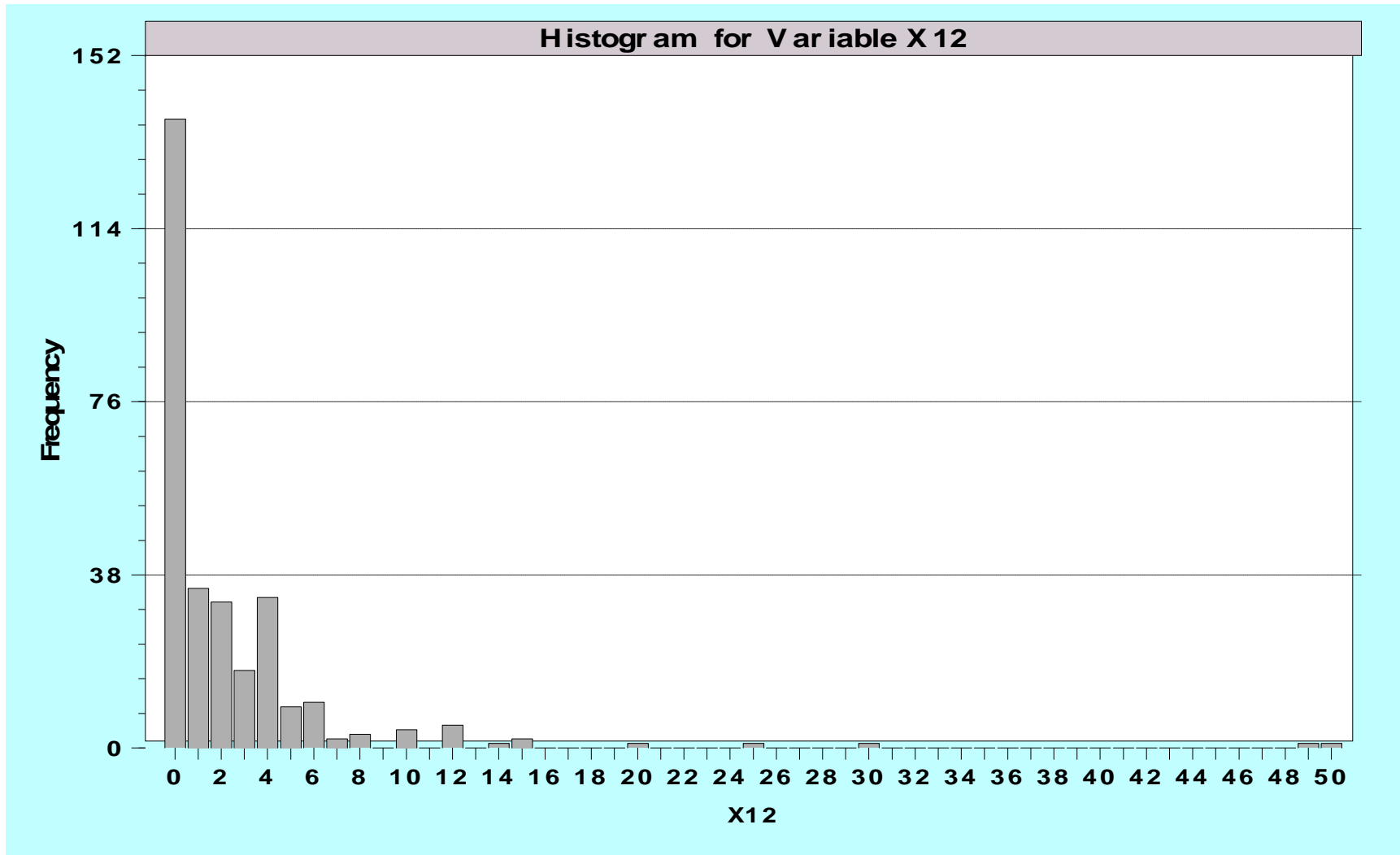
10. When you receive a cell phone call while driving do you normally:
___Answer while driving ___Ignore the call while driving ___I usually keep the cell phone off during driving ___Varies
___Not applicable



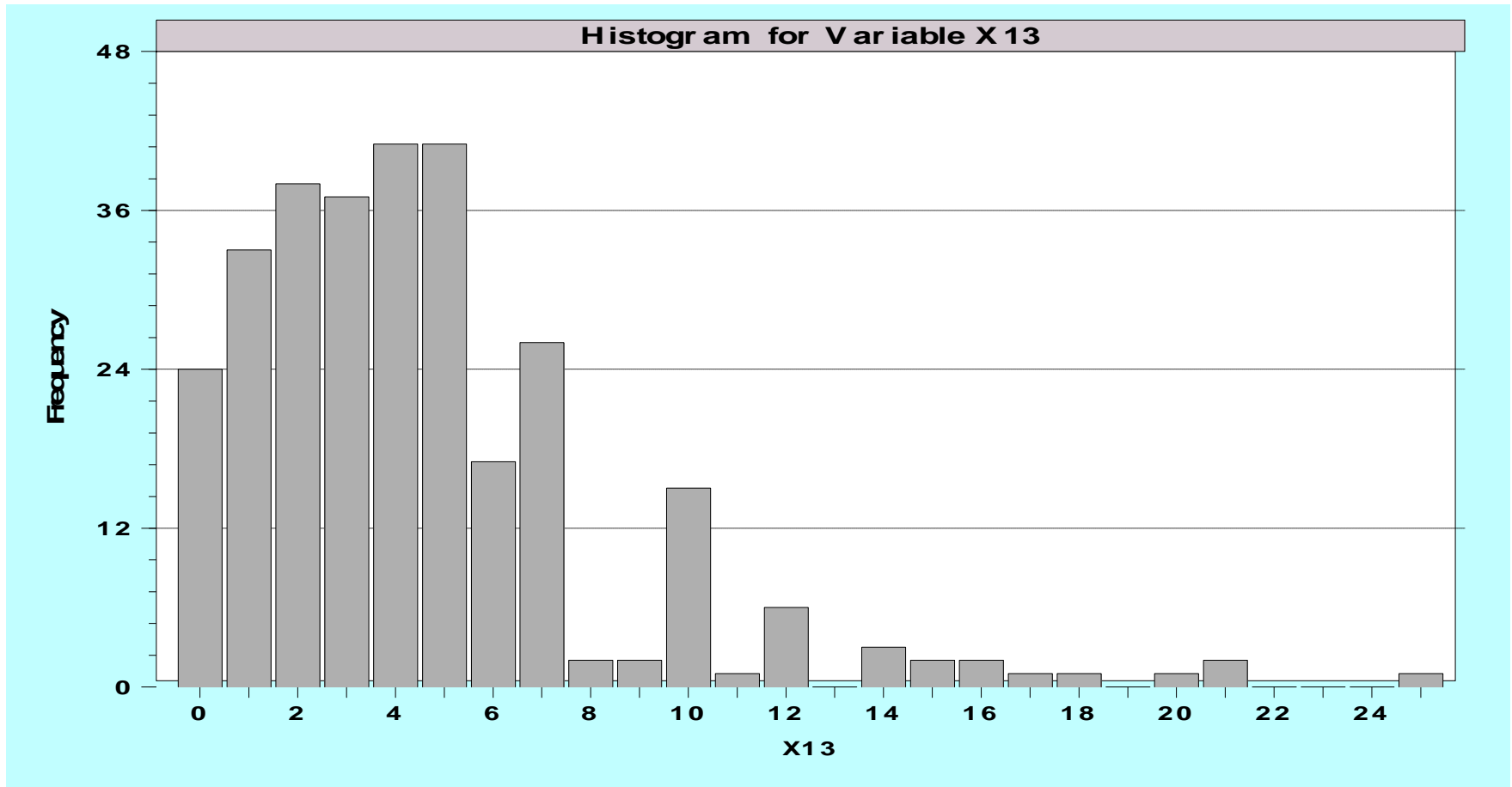
11. Do you currently own a smart phone? ___Yes ___No



12. Over the past month, about how many times have you attended a religious service or meeting? _____

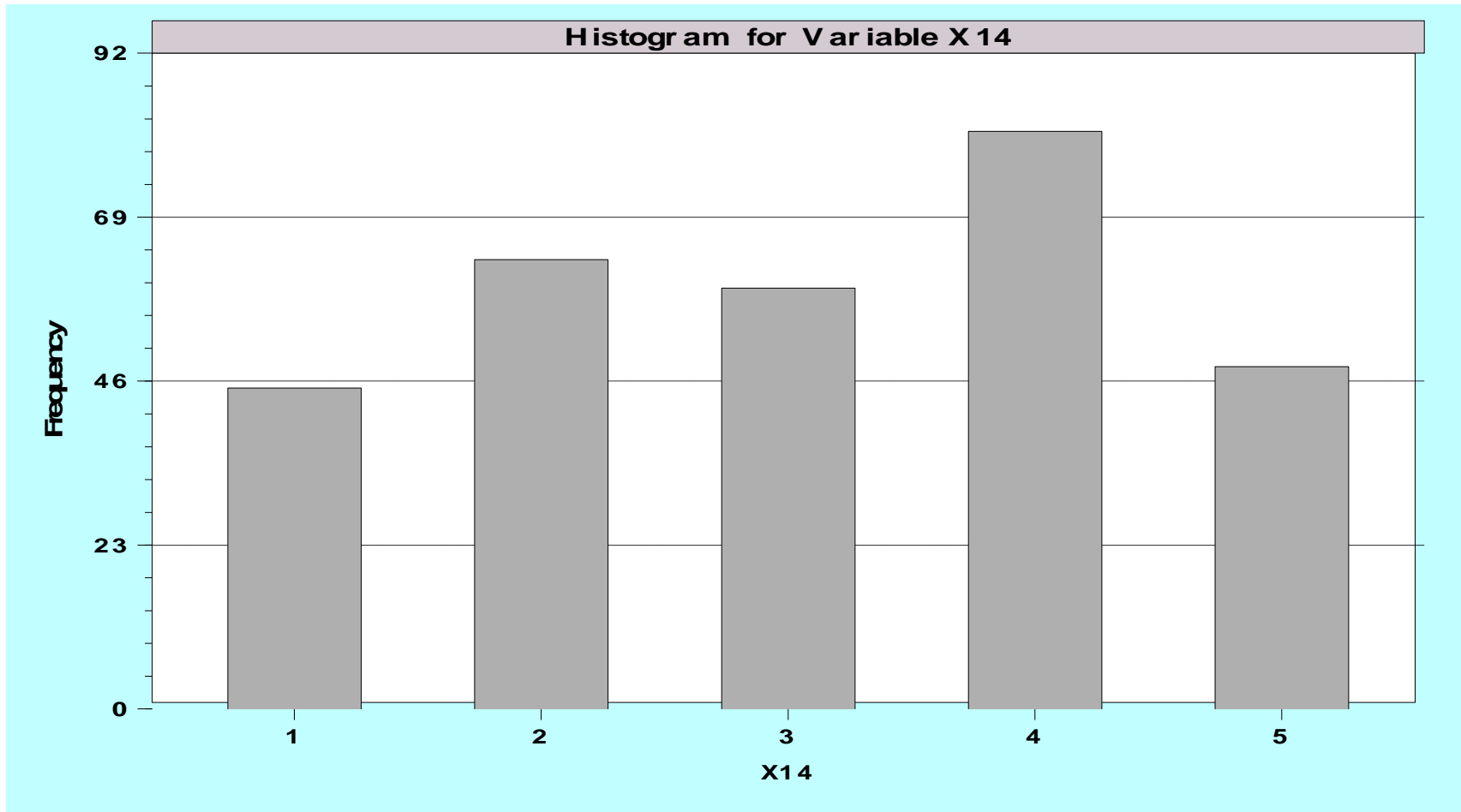


13. About how many times per week do you cook a meal for yourself or family? _____

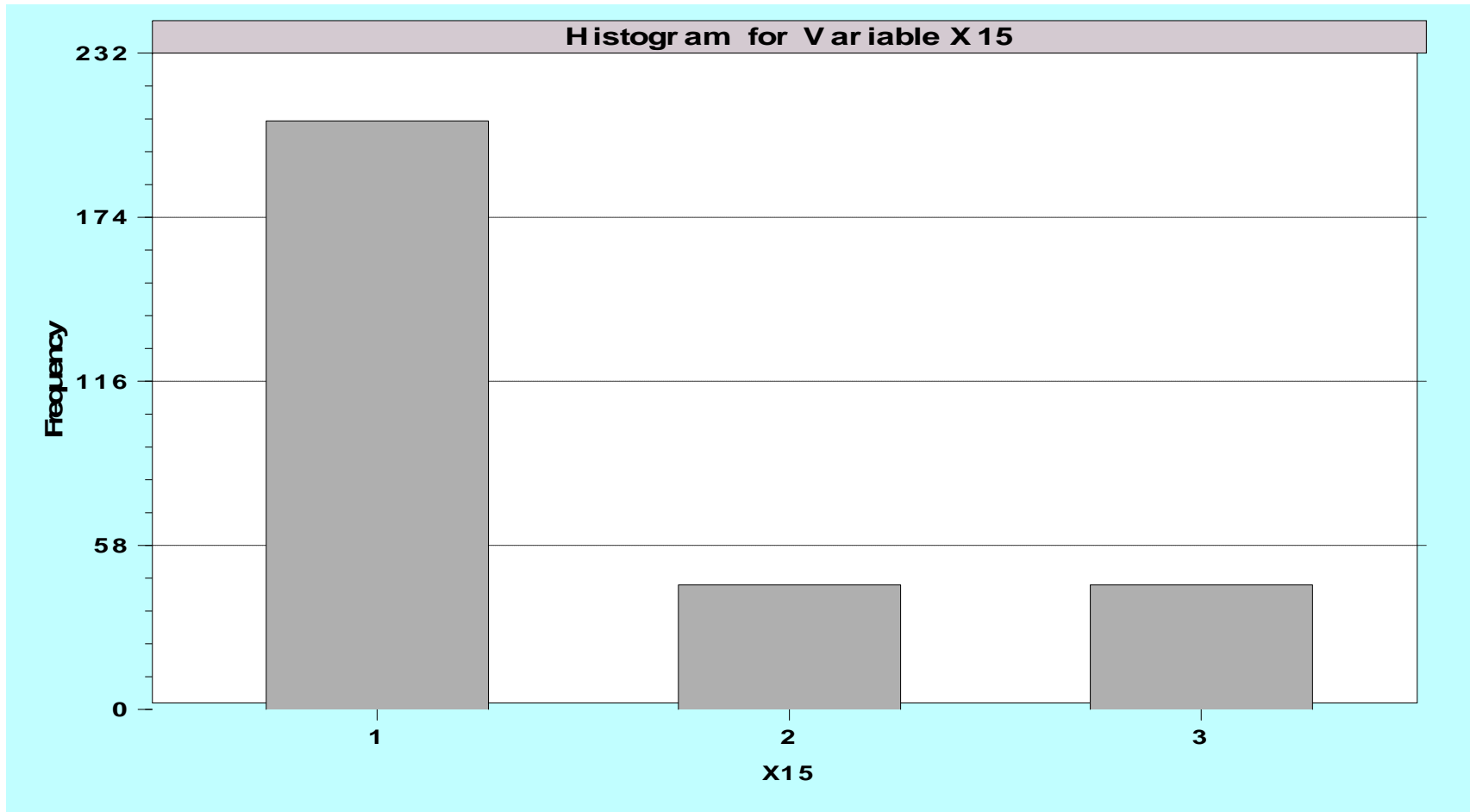


14. How likely would it be for you to start your own business some day?

___ Very unlikely ___ Unlikely ___ Neutral ___ Likely ___ Very likely



15. What do you consider to be your first priority? ___Family ___Career ___Varies/uncertain

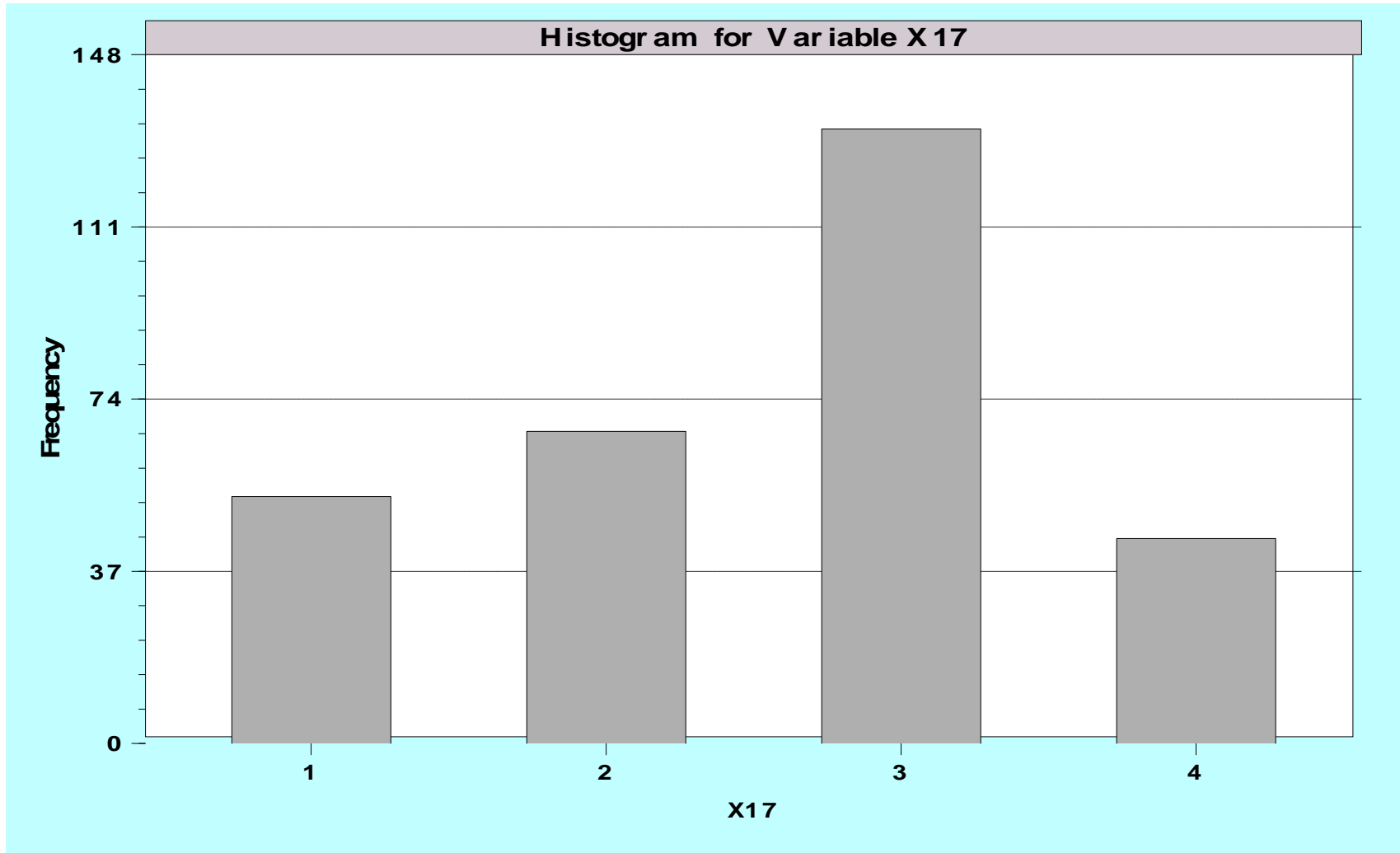


16. Do you ever use your bike for commuting?
___Yes ___No ___Do not have a bike



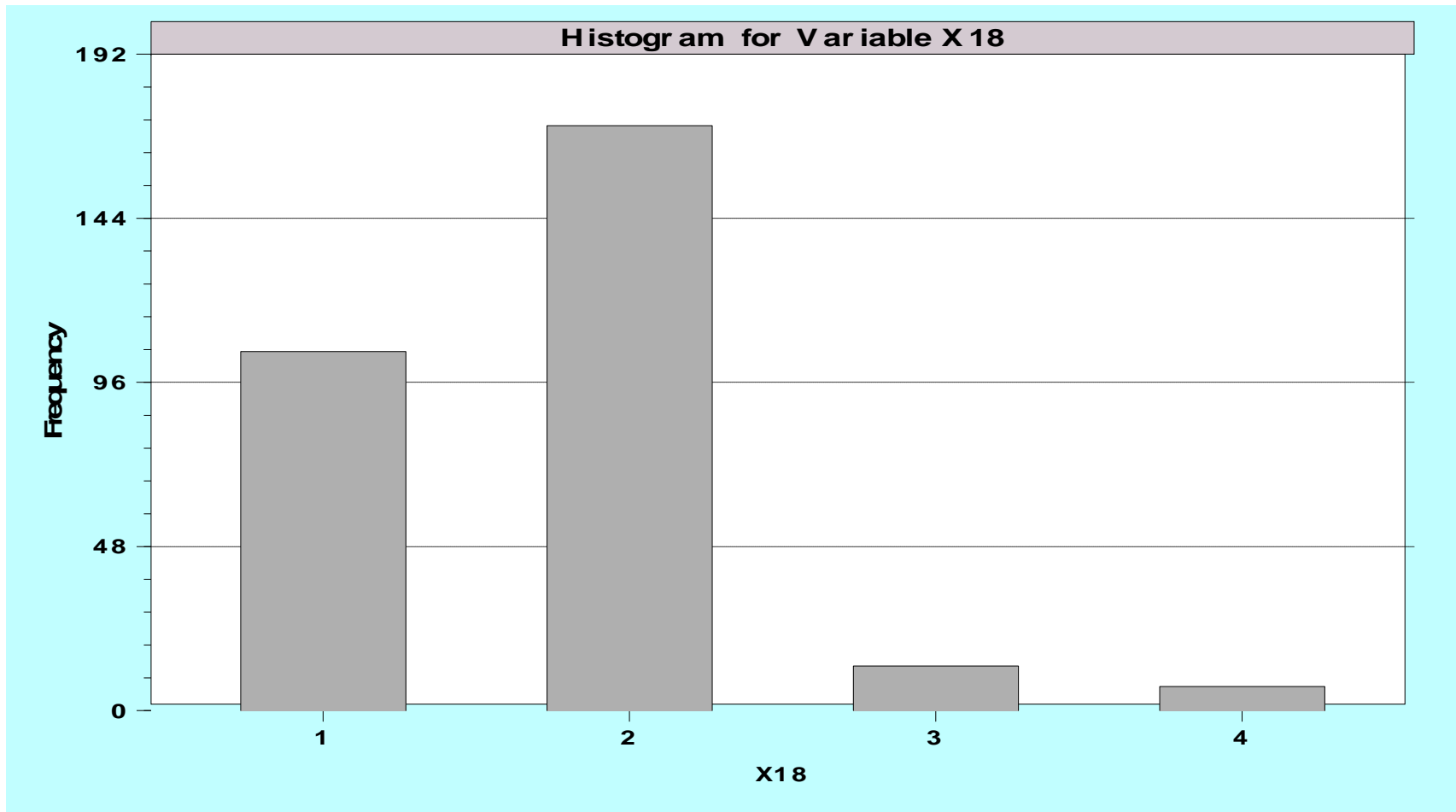
17. The US Constitution should be interpreted:

- As written With the intent of the original authors As a living document adjusting to current values
 No opinion



18. How aggressively do you normally drive?

Not aggressive Somewhat Aggressive Very aggressive Not applicable



19. About how often do you wash your car?

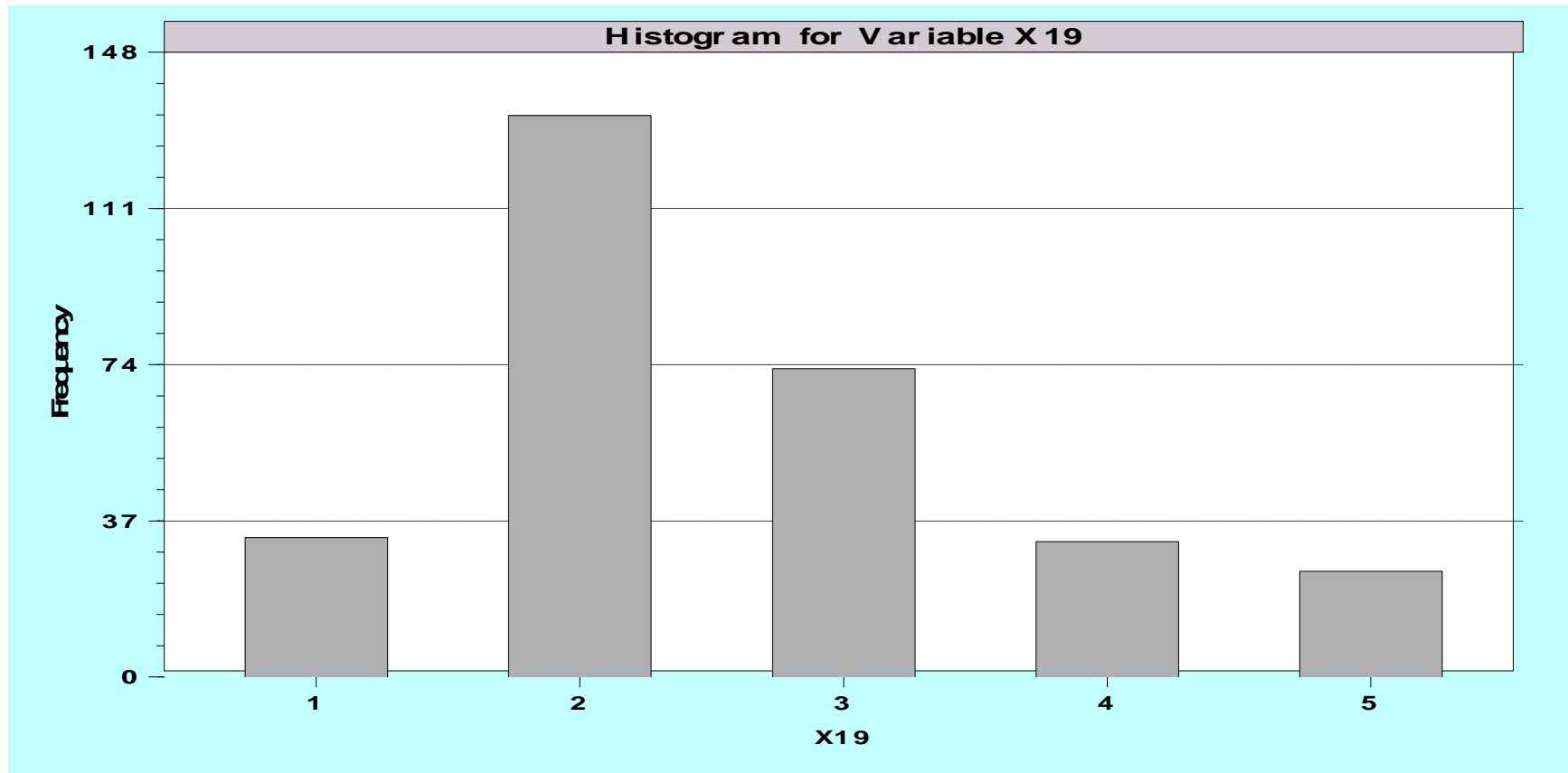
Never

Less than once a month

About once a month

More than once a month

Not applicable

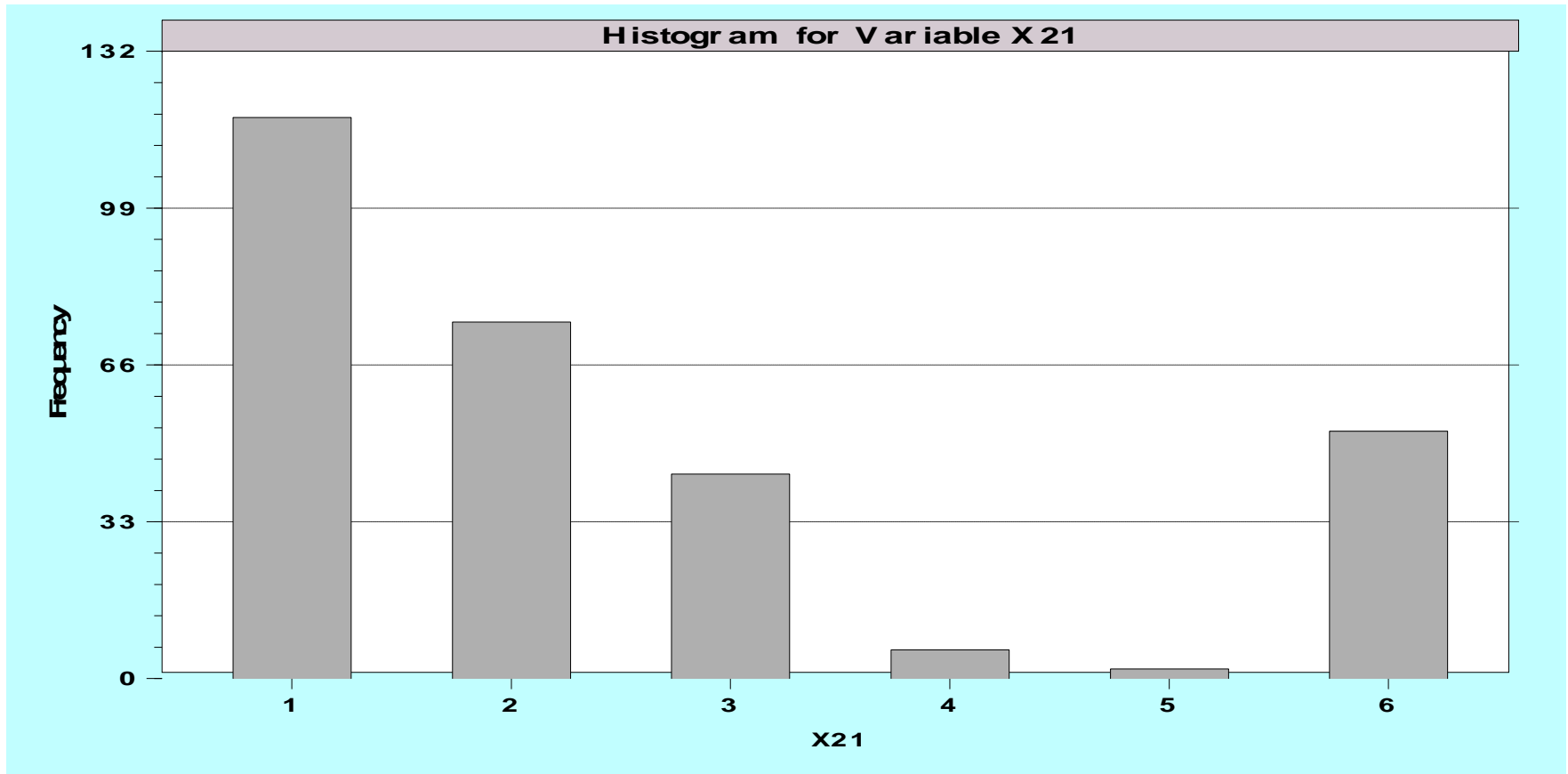


20. Do you sometimes get confused on which way to turn a screw while loosening it? ___Yes ___No

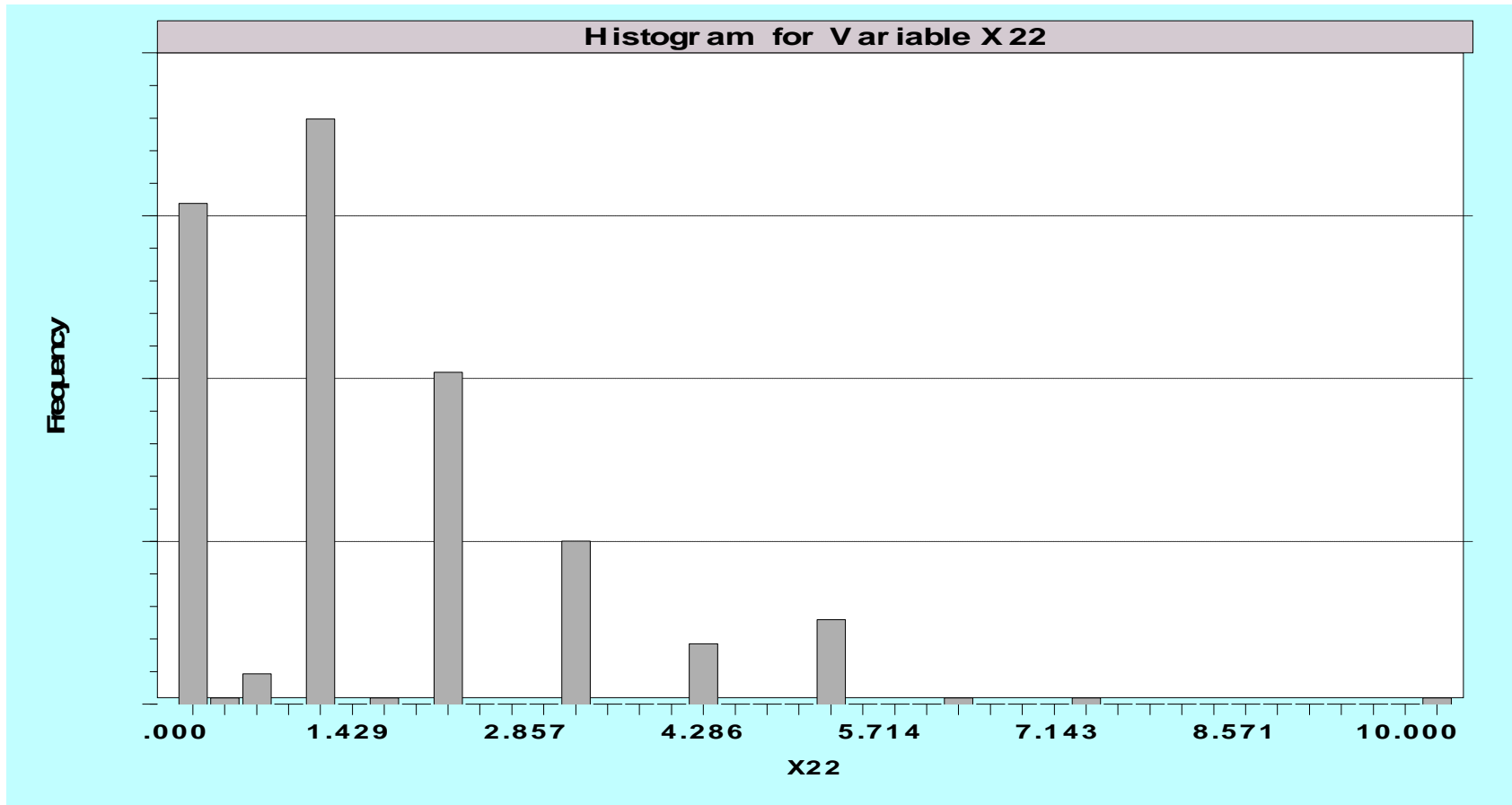


21. What kinds of automobile brands do you prefer?

American Japanese European Korean Other No opinion



22. About how many caffeinated drinks do you consume in a typical day? _____



23. What kind of music do you prefer to listen too while driving?

Classical Country Pop Rock Metal Soul Jazz Blues Other Talk radio
 No opinion

