

**COMBINED STATE BINDER GROUP ROUND ROBIN 2010-3  
SUMMARY B  
PG 70-28**

<b>Supplier Number</b>	<b>Rotational Viscosity (Pa.s) @135°C</b>	<b>DSR Original (kPa) @70°C</b>	<b>DSR RTFO (kPa) @70°C</b>	<b>DSR PAV (kPa) @25°C</b>	<b>Mass Loss (%) @163°C</b>	<b>BBR S-value (MPa) @-18°C</b>	<b>BBR m-value @-18°C</b>
IADOT	1.088	1.17	2.86	1520	-0.721	206	0.333
MNDOT	0.875	1.15	3.03	1642	-0.843	187	0.336
NCSPC	0.204	1.15	2.71	1370	-0.636	206	0.334
NDDOT	1.022	1.28	2.84	1569	-0.814	213	0.333
NEDOR	1.052	1.23	3.17	1605	-0.655	231	0.333
SDDOT	1.071	1.20	3.26	1933	-0.748	223	0.323
UW	1.314	1.21	2.91	1613	-0.275	245	0.337
WISDOT	1.101	1.06	2.49	1595	-0.732	208	0.333
07	1.098	1.20	2.65	1697	-0.722	213	0.325
12	1.075	1.20	2.80	1654	-0.800	213	0.330
29	1.065	1.15	3.37	1831	-0.779	222	0.327
35	1.092	1.25	3.10	1660	-0.794	216	0.318
37	1.143	1.06	2.53	1697	-0.299	226	0.339
42	1.088	1.15	2.87	1710	-0.934	226	0.326
43	1.030	1.13	2.79	1560	-0.748	226	0.343
49	1.077	1.13	2.81	1740	-0.929	220	0.334
60	1.260	1.19	2.86	1770	-0.919	263	0.316
65	1.059	1.09	3.04	1522	-0.830	176	0.339
69	1.080	1.15	2.65	1626	-0.717	215	0.336
70	1.035	1.23	3.01	1517	-0.689	201	0.338
77	1.000	1.20	3.33	1820	-0.884	242	0.319
95	1.135	1.17	3.00	1561	-0.688	199	0.343
A	1.008	1.15	2.93	1432	-0.856	232	0.340
B	1.037	1.11	3.23	1715	-0.744	199	0.331
C	1.065	1.21	3.02	1705	-0.681	225	0.326
E	1.119	1.12	3.02	1460	-0.698	185	0.342
F	1.090	1.21	3.00	1,722	-0.786	228	0.334
J	1.156	1.15	2.71	1526	-0.664	196	0.330
L	1.202	1.10	3.07	1983	-0.861	223	0.334
M	1.240	1.13	2.73	1519	-0.748	214	0.331
O	1.118	1.11	3.01	1,512	-0.514	190	0.341
P	1.055	1.12	2.68	1577	-0.731	206	0.342
T	1.072	1.13	2.91	1595	-0.683	209	0.334
U	1.181	1.19	3.16	1685	-0.674	200	0.336
V	1.072	1.18	3.01	1487	-0.795	218	0.336
<b>Average</b>	1.068	1.16	2.93	1,632	-0.731	214	0.333
<b>Std. Dev.</b>	0.1700	0.0513	0.2143	134.54	0.1429	17.81	0.0070
<b>Coef. of Var.</b>	15.920	4.415	7.315	8.243	19.544	8.312	2.105

COMBINED STATE BINDER GROUP ROUND ROBIN 2010-3  
SUMMARY B  
70-28

	Rot. Visc.	ODSR	RTFO DSR	PAVDSR	Mass Loss	S-value	m-value
<b>A</b>							
19	1.004	1.13	3.03	1403	-0.871	236	0.338
51	1.006	1.16	2.82	1440	-0.862	235	0.340
97	1.006	1.14	2.84	1350	-0.834	222	0.343
98	1.016	1.18	3.02	1536	-0.857	235	0.340
Average	1.008	1.15	2.93	1,432	-0.856	232	0.340

<b>B</b>							
01	1.030	1.12	3.29	1600	-0.715	197	0.322
17	1.040	1.09	3.13	1745	-0.768	203	0.334
45	1.040	1.13	3.28	1800	-0.750	196	0.336
Average	1.037	1.11	3.23	1,715	-0.744	199	0.331

<b>C</b>							
28	1.073	1.22	3.06	1678	-0.672	221	0.324
66	1.070	1.21	3.12	1689	-0.659	228	0.326
90	1.066	1.21	3.03	1702	-0.690	221	0.330
99	1.052	1.20	2.85	1750	-0.701	229	0.323
Average	1.065	1.21	3.02	1705	-0.681	225	0.326

<b>E</b>							
15	1.138	1.11	3.04	1433	-0.693	179	0.342
89	1.100	1.13	3.00	1486	-0.703	191	0.342
Average	1.119	1.12	3.02	1460	-0.698	185	0.342

<b>F</b>							
02	1.046	1.20	2.95	1798	-0.676	239	0.338
11	1.048	1.22	3.03	1388	-0.697	196	0.350
34	1.156	1.26	3.13	1677	-0.904	233	0.331
48	1.083	1.19	3.14	1649	-0.883	234	0.337
56	1.108	1.18	2.86	1864	-0.782	229	0.329
62	1.099	1.19	2.91	1957	-0.775	237	0.319
Average	1.090	1.21	3.00	1,722	-0.786	228	0.334

<b>J</b>							
05	1.158	1.14	2.73	1572	-0.595	194	0.330
08	1.150	1.15	2.61	1463	-0.728	201	0.330
31	1.156	1.16	2.83	1482	-0.557	195	0.340
41	1.163	1.13	2.75	1582	-0.729	202	0.331
44	1.152	1.17	2.71	1633	-0.723	199	0.325
52	1.159	1.14	2.68	1564	-0.583	191	0.329
83	1.156	1.15	2.65	1383	-0.733	192	0.327
Average	1.156	1.15	2.71	1526	-0.664	196	0.330

<b>L</b>							
25	1.200	1.09	3.07	1993	-0.855	223	0.335
59	1.204	1.10	3.07	1973	-0.867	222	0.333
Average	1.202	1.10	3.07	1983	-0.861	223	0.334

<b>M</b>							
04	1.238	1.07	2.50	1528	-0.752	216	0.318
47	1.243	1.17	2.85	1516	-0.749	221	0.338
57	1.238	1.15	2.84	1512	-0.742	206	0.337
Average	1.240	1.13	2.73	1519	-0.748	214	0.331

<b>O</b>							
76	1.115	1.11	2.93	1511	-0.520	195	0.341
85	1.120	1.10	3.08	1513	-0.508	184	0.340
Average	1.118	1.11	3.01	1512	-0.514	190	0.341

<b>P</b>							
30	1.043	1.12	2.81	1632	-0.731	208	0.342
71	1.065	1.12	2.59	1514	-0.709	208	0.348
73	1.057	1.13	2.64	1586	-0.754	202	0.337
Average	1.055	1.12	2.68	1577	-0.731	206	0.342

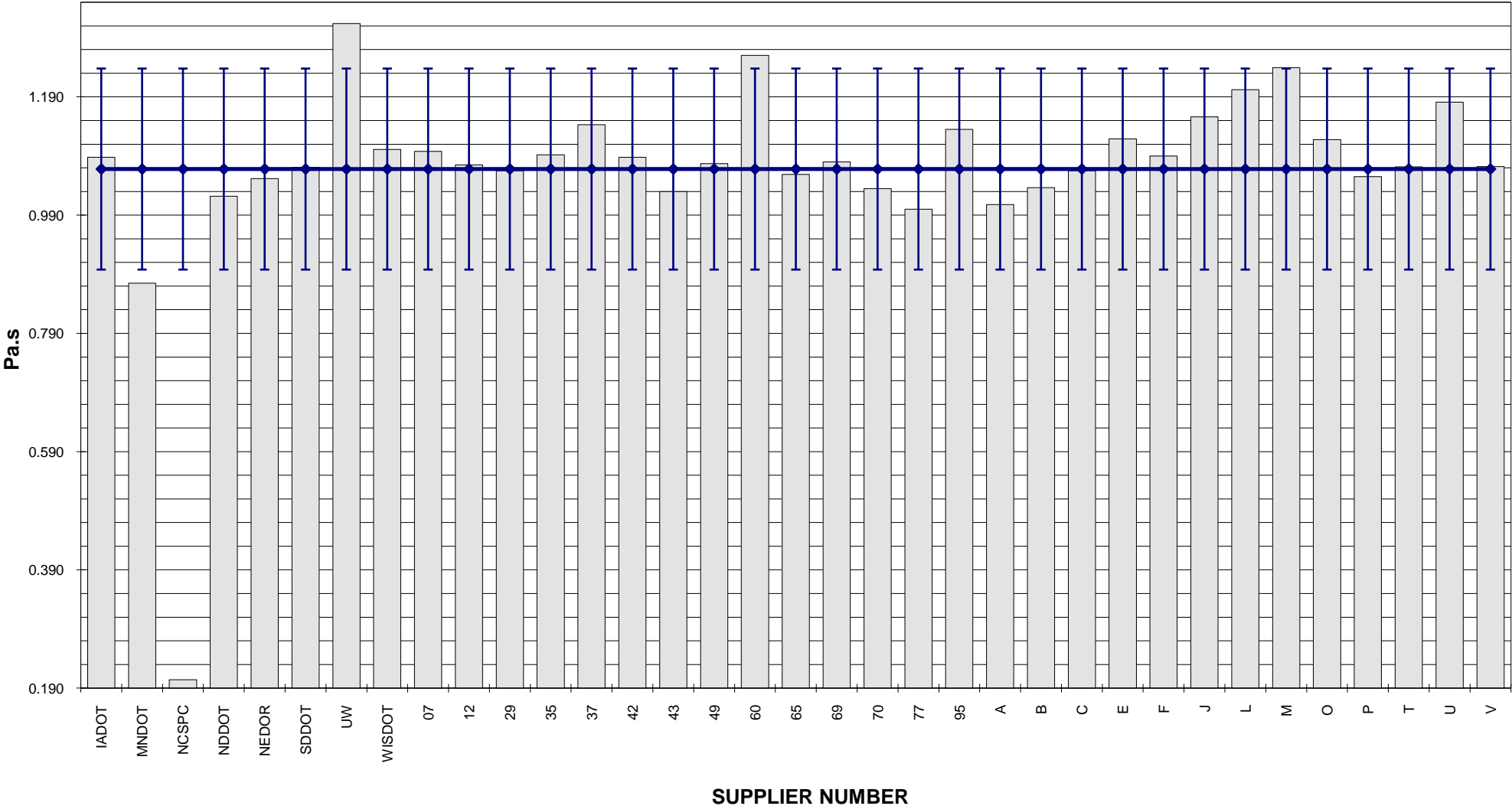
<b>T</b>							
39	1.080	1.14	2.98	1599	-0.719	211	0.332
87	1.063	1.12	2.84	1590	-0.647	206	0.335
Average	1.072	1.13	2.91	1595	-0.683	209	0.334

<b>U</b>							
24	1.190	1.19	3.13	1650	-0.674	193	0.337
93	1.172	1.18	3.18	1720	-0.674	207	0.335
Average	1.181	1.19	3.16	1685	-0.674	200	0.336

<b>V</b>							
58	1.067	1.17	2.98	1450	-0.793	217	0.338
78	1.081	1.18	3.02	1480	-0.794	219	0.337
81	1.068	1.18	3.03	1530	-0.799	218	0.334
Average	1.072	1.18	3.01	1487	-0.795	218	0.336

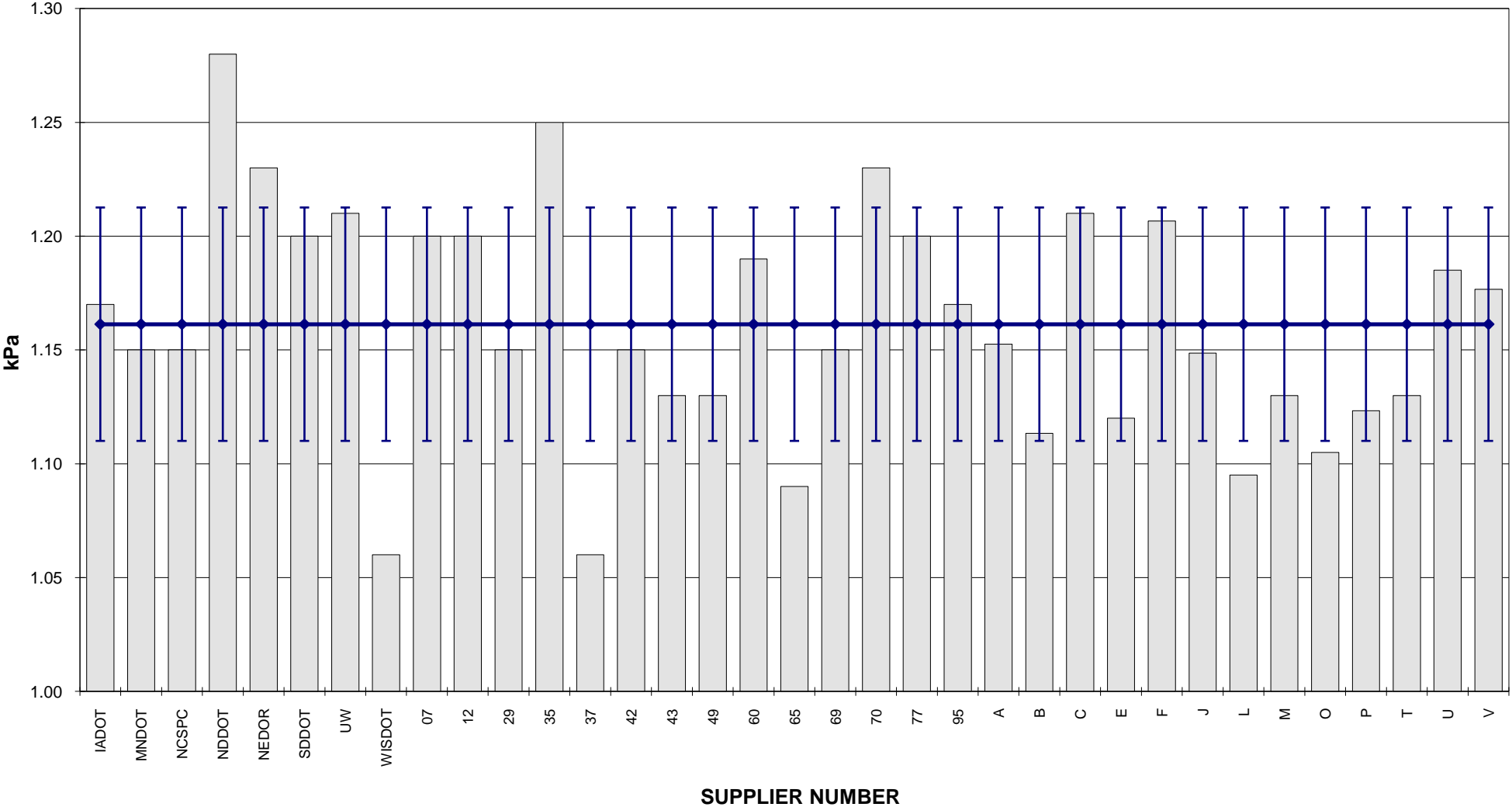
**COMBINED STATE BINDER GROUP ROUND ROBIN 2010-3  
SUMMARY B  
PG 70-28**

**ROTATIONAL VISCOSITY**



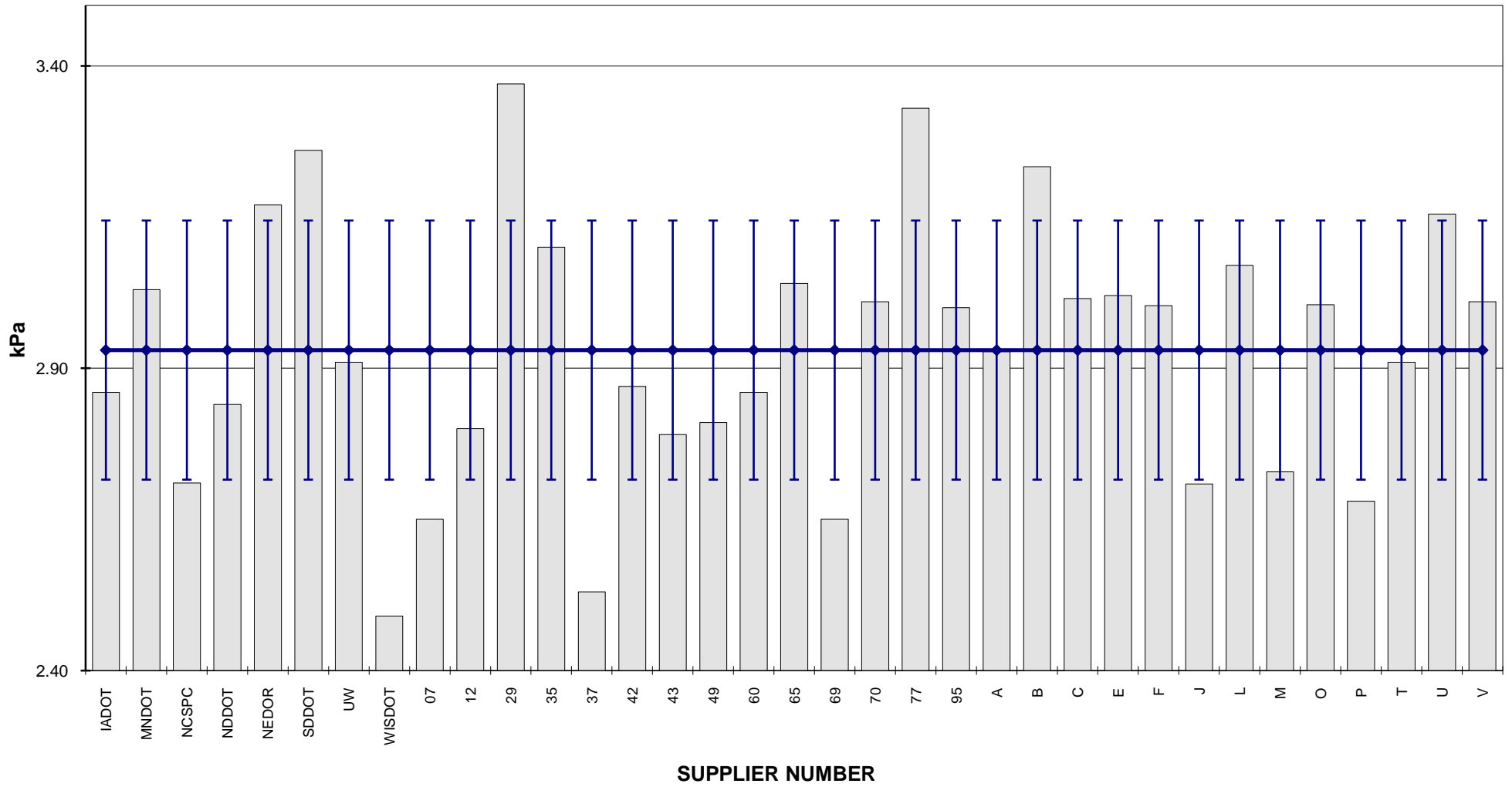
COMBINED STATE BINDER GROUP ROUND ROBIN 2010-3  
SUMMARY B  
PG 70-28

DSR - ORIGINAL

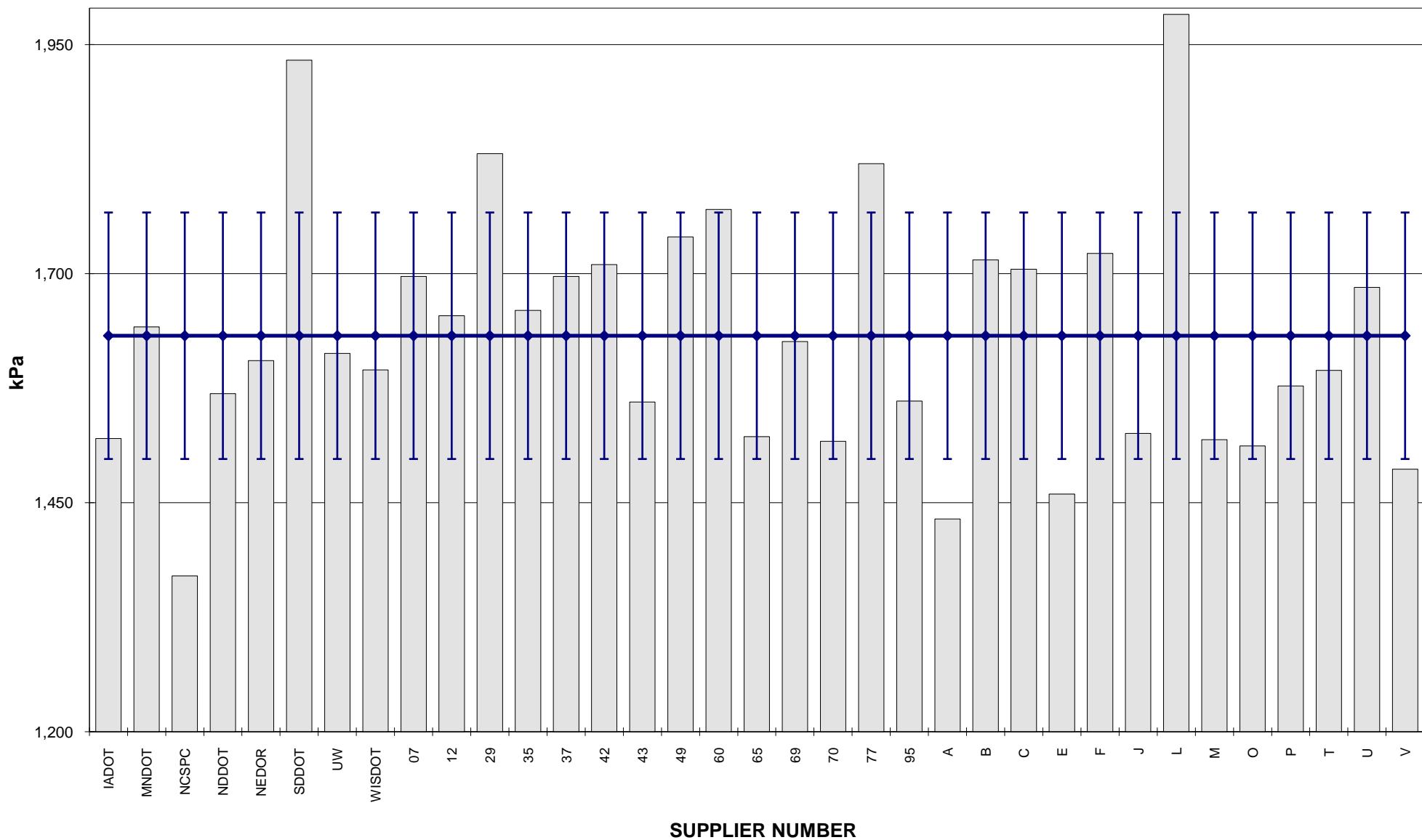


**COMBINED STATE BINDER GROUP ROUND ROBIN 2010-3  
SUMMARY B  
PG 70-28**

**DSR - RTFO**

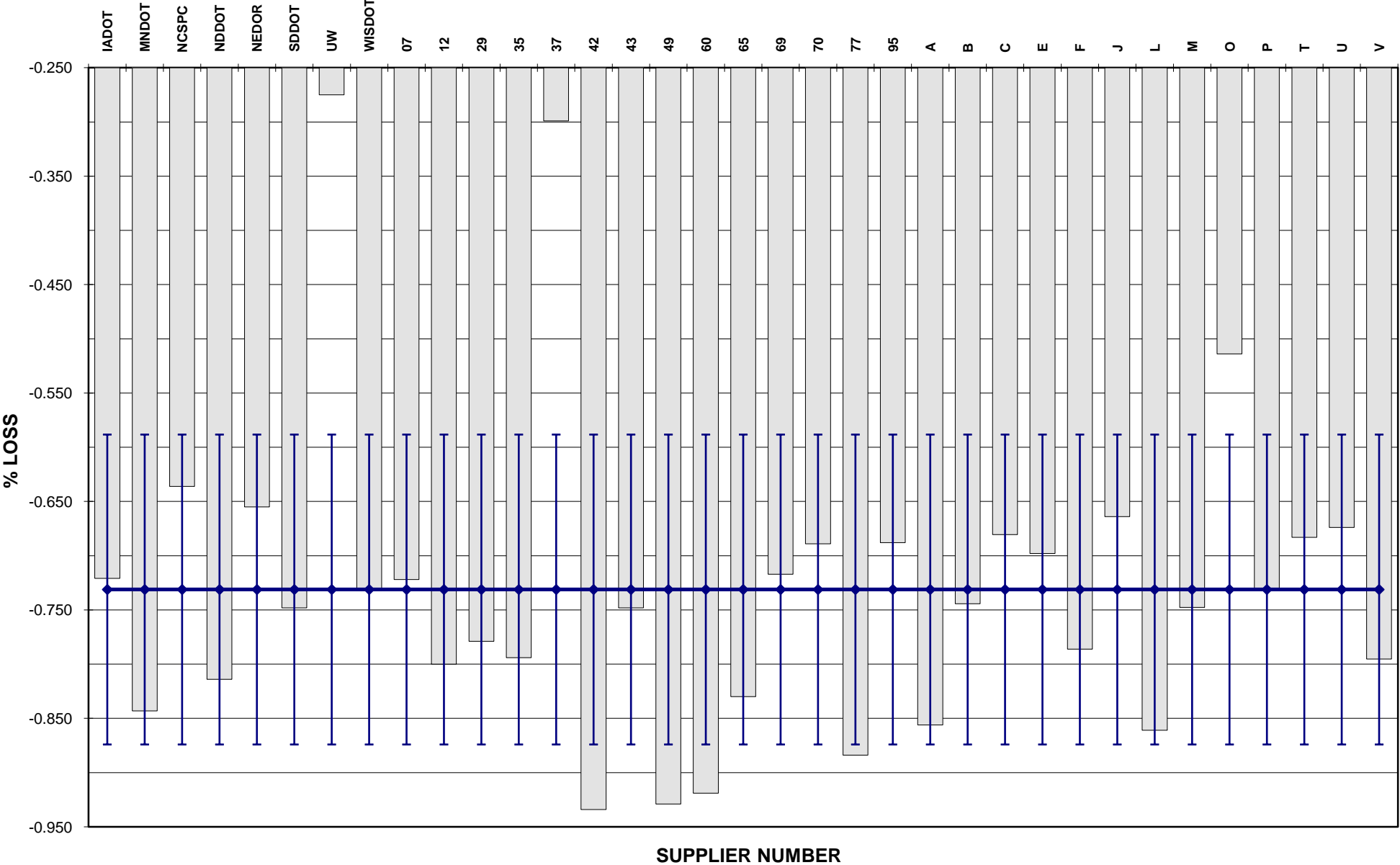


**COMBINED STATE BINDER GROUP ROUND ROBIN 2010-3  
SUMMARY B  
PG 70-28  
DSR - PAV**



**COMBINED STATE BINDER GROUP ROUND ROBIN 2010-3  
SUMMARY B  
PG 70-28**

**RTFO MASS LOSS**

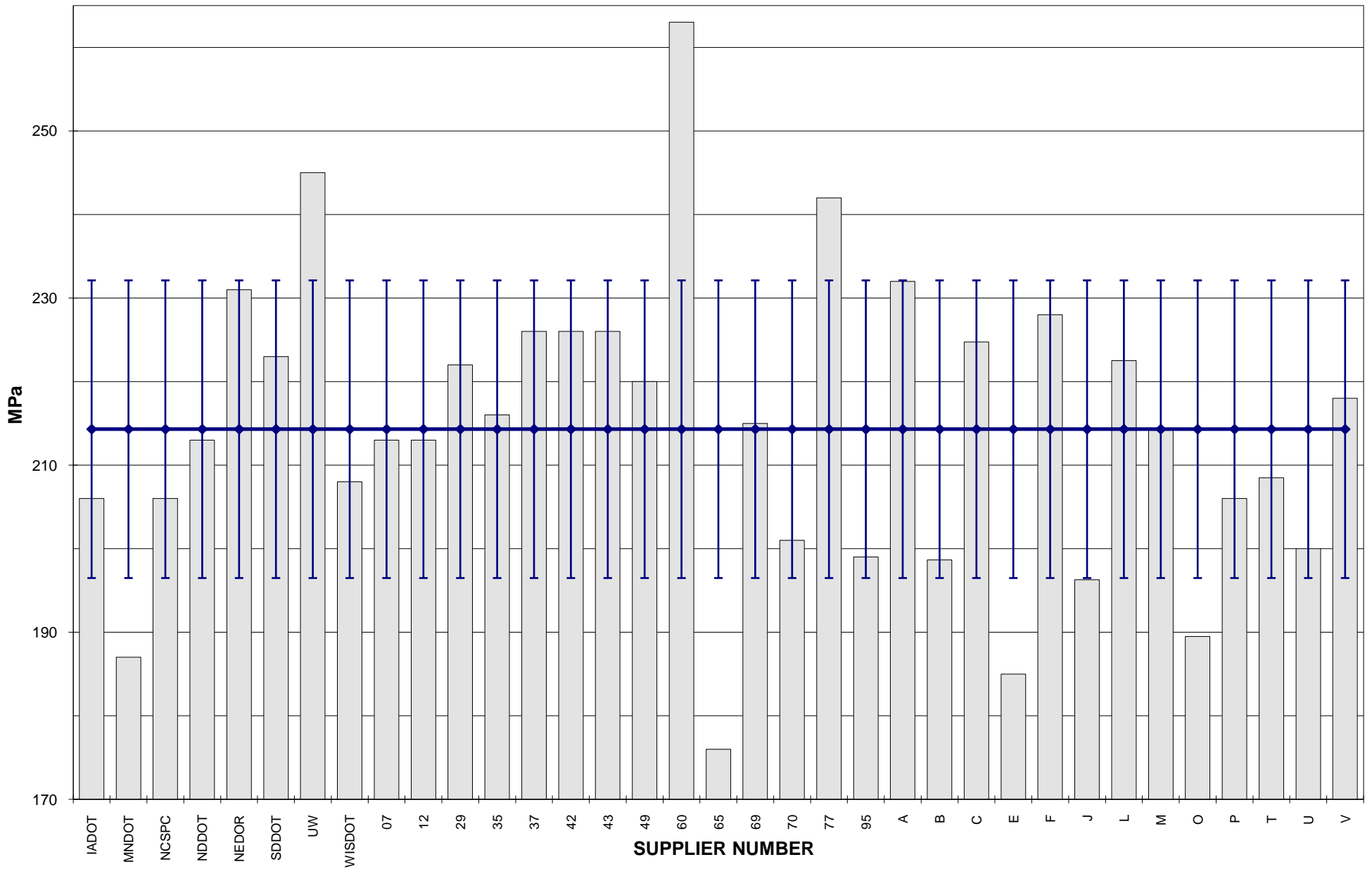


COMBINED STATE BINDER GROUP ROUND ROBIN 2010-3

SUMMARY B

PG 70-28

BBR STIFFNESS





COMBINED STATE BINDER GROUP ROUND ROBIN 2010-3

SUMMARY B

PG 70-28

BBR m-VALUE

