



**Combined State Binder
Group**

Method of Acceptance for
Asphalt Binders

Round Robin 2006-2

Summary A

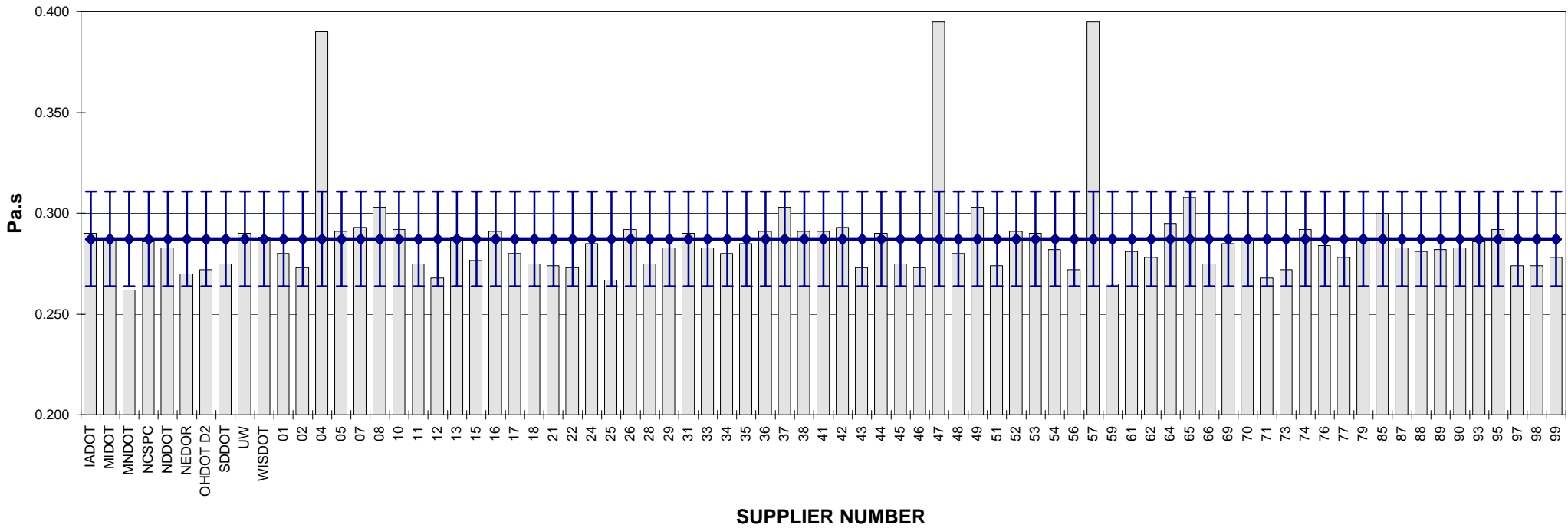
**COMBINED STATE BINDER GROUP ROUND ROBIN 2006-2
SUMMARY A
PG 58-28**

Supplier Number	Rotational Viscosity (Pa.s) @135°C	DSR Original (kPa) @58°C	DSR RTFO (kPa) @58°C	DSR PAV (kPa) @19°C	Mass Loss (%) @163°C	BBR S-value (MPa) @-18°C	BBR m-value @-18°C	DTT Strain (%) @-18°C	DTT Stress (MPa) @-18°C	CRITICAL CRACK TEMP (°C)
IADOT	0.290	1.41	3.67	4,526	-0.551	268	0.315			
MIDOT	0.287	1.33	3.58	4,063	-0.515	224	0.326			
MNDOT	0.262	1.35	3.65	4,748	-0.561	216	0.306			
NCSPC	0.286	1.39	3.52	3,729	-0.543	245	0.314			
NDDOT	0.283	1.33	3.48	4,609	-0.553	247	0.313			
NEDOR	0.270	1.29	3.52	4,799	-0.530	252	0.304			
OHDDOT D2	0.272	1.36	3.70	4,753	-0.542	267	0.302			
SDDOT	0.275	1.37	3.35	4,758	-0.452	249	0.309			
UW	0.290	1.29	3.18	4,731	-0.642	249	0.325			
WISDOT	0.288	1.26	3.20	4,565	-0.422	225	0.313			
01	0.280	1.30	3.85	4,122	-0.451	240	0.324			
02	0.273	1.30	3.63	4,486	-0.495	262	0.314			
04	0.390	1.25	3.59	4,574	-0.521	253	0.310			
05	0.291	1.32	3.34	4,519	-0.403	226	0.314			
07	0.293	1.41	3.51	5,617	-0.640	249	0.318			
08	0.303	1.32	3.28	4,412	-0.455	237	0.320			
10	0.292	1.28	3.29	4,142	-0.382	235	0.318			
11	0.275	1.29	3.22	4,303	-0.507	245	0.309			
12	0.268	1.38	3.73	4,740	-0.666	248	0.314			
13	0.288	1.29	3.43	4,642	-0.472	249	0.327			
15	0.277	1.33	3.75	4,457	-0.668	245	0.309			
16	0.291	1.25	3.43	4,886	-0.491	239	0.320			
17	0.280	1.29	3.69	4,171	-0.448	252	0.318			
18	0.275	1.36	3.70	4,588	-0.526	233	0.328			
21	0.274	1.25	3.45	4,297	-0.473	261	0.307			
22	0.273	1.23	3.07	4,280	-0.580	259	0.317			
24	0.285	1.31	3.44	4,586	-0.447	232	0.318	0.82	3.21	-28.0
25	0.267	1.27	3.25	4,448	-0.492	220	0.338			
26	0.292	1.31	3.37	4,617	-0.407	238	0.320			
28	0.275	1.27	3.33	3,925	-0.466	256	0.309			
29	0.283	1.32	3.36	4,552	-0.538	257	0.313			
31	0.290	1.25	3.29	4,401	-0.408	228	0.320			
33	0.283	1.31	3.41	4,700	-0.494	253	0.326			
34	0.280	1.30	3.71	4,654	-0.511	255	0.315			
35	0.285	1.18	3.35	3,914	-0.549	265	0.313			
36	0.291	1.27	3.43	4,324	-0.429	234	0.316			
37	0.303	1.39	3.55	5,746	-0.461	244	0.316	1.40	4.36	-28.8
38	0.291	1.31	3.47	4,234	-0.472	237	0.318			
41	0.291	1.26	3.28	4,657	-0.445	234	0.315			
42	0.293	1.33	3.73	4,415	-0.693	222	0.313			
43	0.273	1.33	3.50	4,761	-0.489	250	0.318			
44	0.290	1.30	3.46	4,216	-0.474	236	0.308			
45	0.275	1.30	3.70	4,572	-0.519	241	0.319			
46	0.273	1.28	3.21	4,253	-0.583	236	0.319			
47	0.395	1.37	3.79	4,514	-0.466	258	0.304			
48	0.280	1.22	3.82	4,540	-0.519	256	0.311			
49	0.303	1.33	3.88	4,064	-0.658	233	0.319			
51	0.274	1.24	3.27	4,745	-0.556	246	0.322			
52	0.291	1.28	3.32	4,115	-0.484	232	0.310			
53	0.290	1.39	3.71	4,920	-0.500	250	0.315			
54	0.282	1.35	3.57	4,724	-0.507	244	0.320			
56	0.272	1.24	3.38	4,626	-0.502	253	0.308			
57	0.395	1.26	3.62	4,577	-0.578	255	0.306	1.25	3.84	
59	0.265	1.27	3.40	4,600	-0.477	248	0.330			
61	0.281	1.34	3.69	4,552	-0.628	235	0.309			
62	0.278	1.25	3.27	4,415	-0.483	260	0.316			
64	0.295	1.45	3.99	3,027	-0.620	257	0.310			
65	0.308	1.37	3.68	3,400	-0.505	224	0.316			
66	0.275	1.25	3.63	4,520	-0.497	262	0.305			
69	0.285	1.34	3.70	5,820	-0.639	244	0.315	0.61	4.59	-29.0
70	0.287	1.25	3.40	3,739	-0.610	223	0.329			
71	0.268	1.32	3.47	3,725	-0.489	216	0.342			
73	0.272	1.33	3.19	3,204	-0.433	219	0.345			
74	0.292	1.27	3.42	4,223	-0.429	229	0.314			
76	0.284	1.25	3.46	2,974	-0.487	232	0.324			
77	0.278	1.42	4.01	2,334	-0.535	269	0.291			
79	0.287	1.37	3.61	4,529	-0.528	232	0.327			
85	0.300	1.25	3.14	3,495	-0.513	222	0.319			
87	0.283	1.28	3.77	4,550	-0.042	243	0.318			
88	0.281	1.29	3.52	4,325	-0.404	234	0.320			
89	0.282	1.23	3.81	4,426	-0.659	245	0.303			
90	0.283	1.26	3.24	4,104	-0.487	254	0.311			
93	0.286	1.29	3.36	4,658	-0.474	250	0.318			
95	0.292	1.29	3.60	4,446	-0.444	248	0.315			
97	0.274	1.24	3.30	4,779	-0.547	247	0.320			
98	0.274	1.20	3.32	4,754	-0.518	244	0.320			
99	0.278	1.28	3.34	4,355	-0.500	266	0.307			
Average	0.2872	1.3024	3.4977	4,393.12	-0.5076	243.42	0.3162	1.020	4.00	
Std. Dev.	0.0235	0.0539	0.2096	539.04	0.0885	13.38	0.0087	0.368	0.61	
Coef. of Var.	8.182	4.138	5.992	12.270	17.442	5.496	2.752	36.040	15.33	

COMBINED STATE BINDER GROUP ROUND ROBIN 2006-2
SUMMARY A

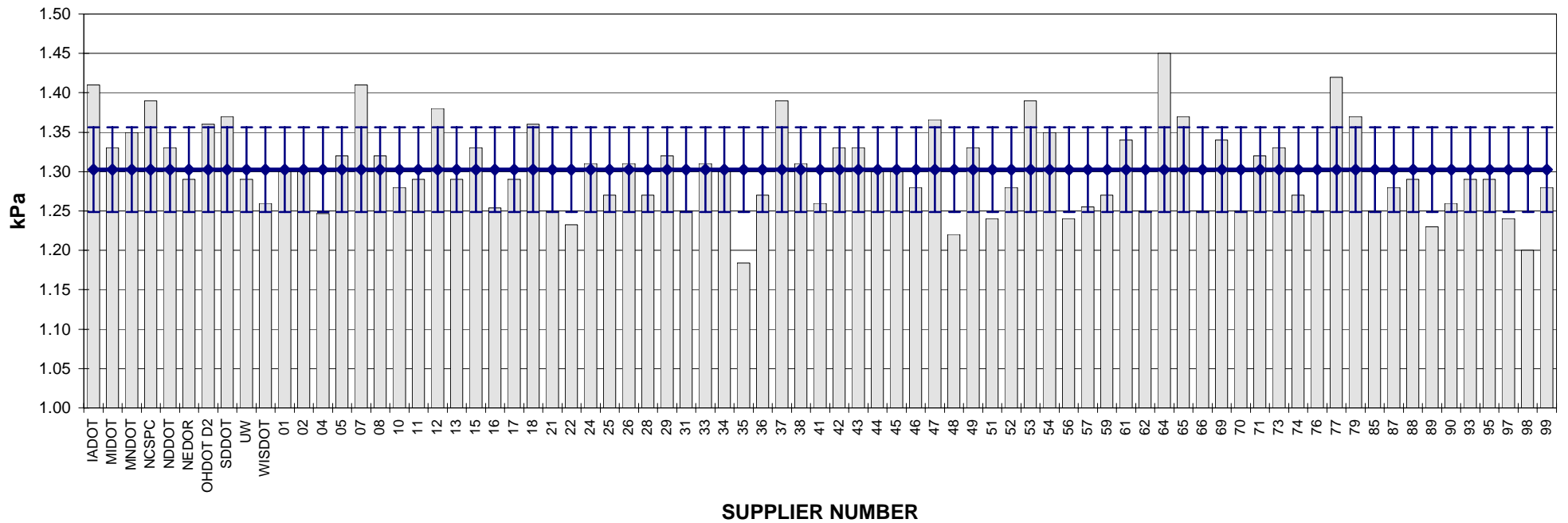
PG 58-28

ROTATIONAL VISCOSITY



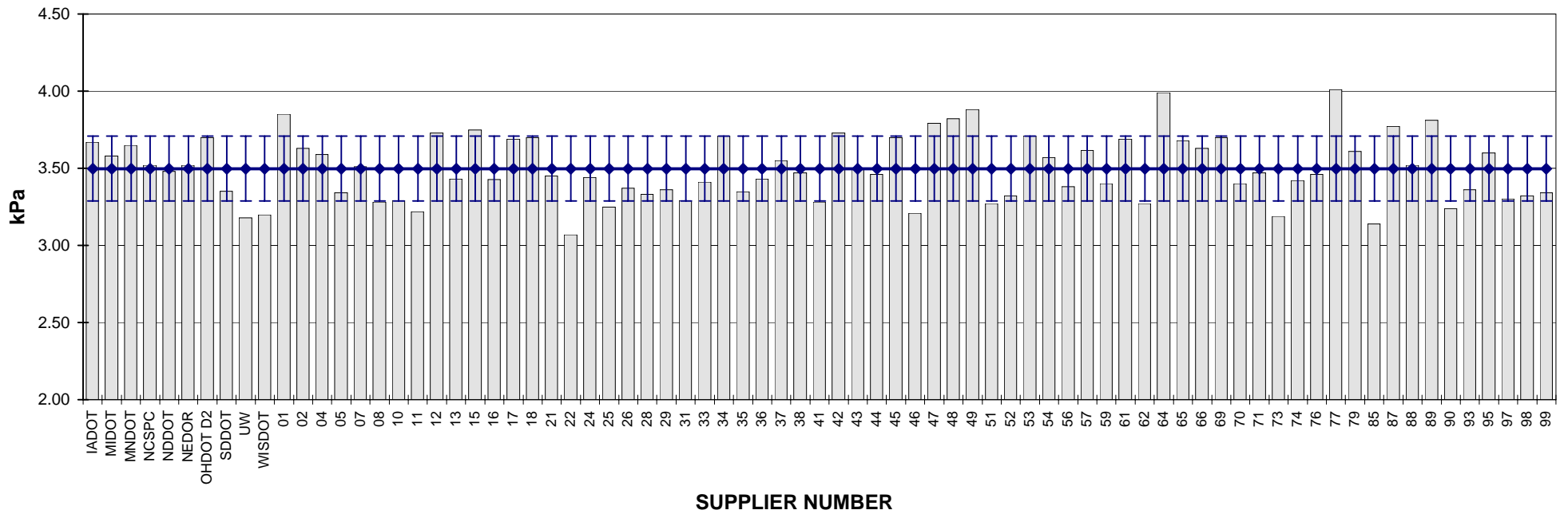
COMBINED STATE BINDER GROUP ROUND ROBIN 2006-2
SUMMARY A
PG 58-28

DSR - ORIGINAL

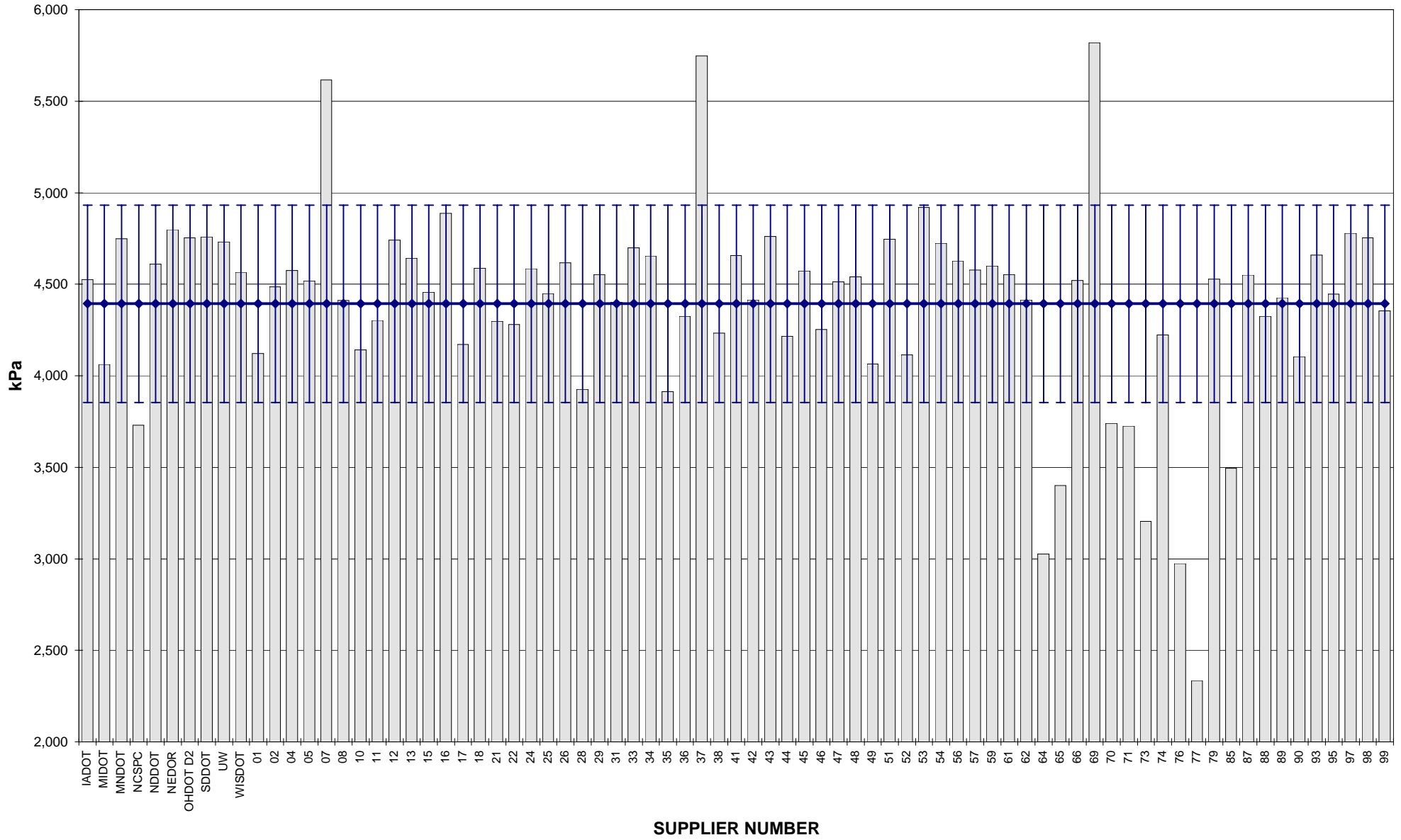


COMBINED STATE BINDER GROUP ROUND ROBIN 2006-2
SUMMARY A
PG 58-28

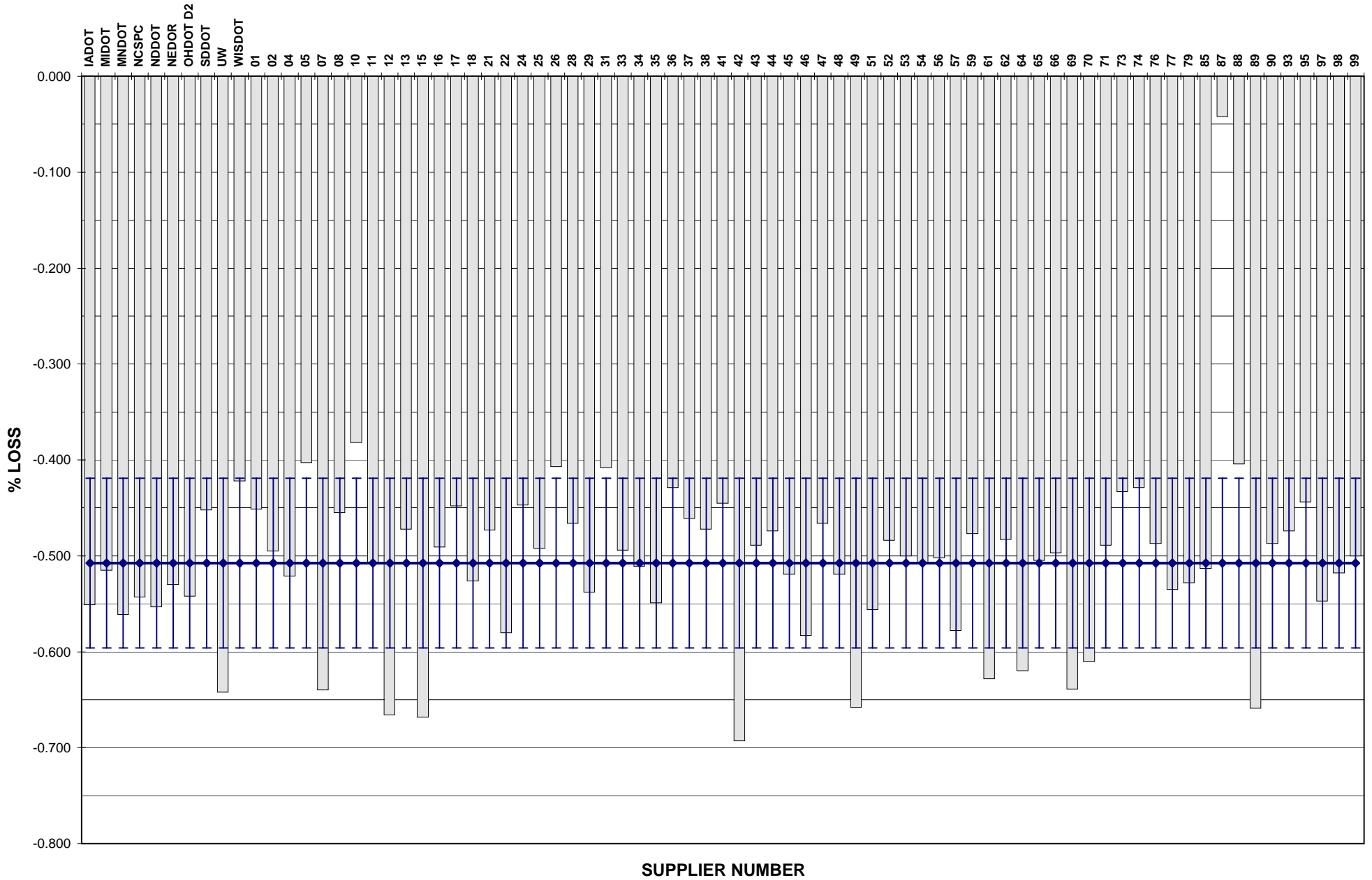
DSR - RTFO



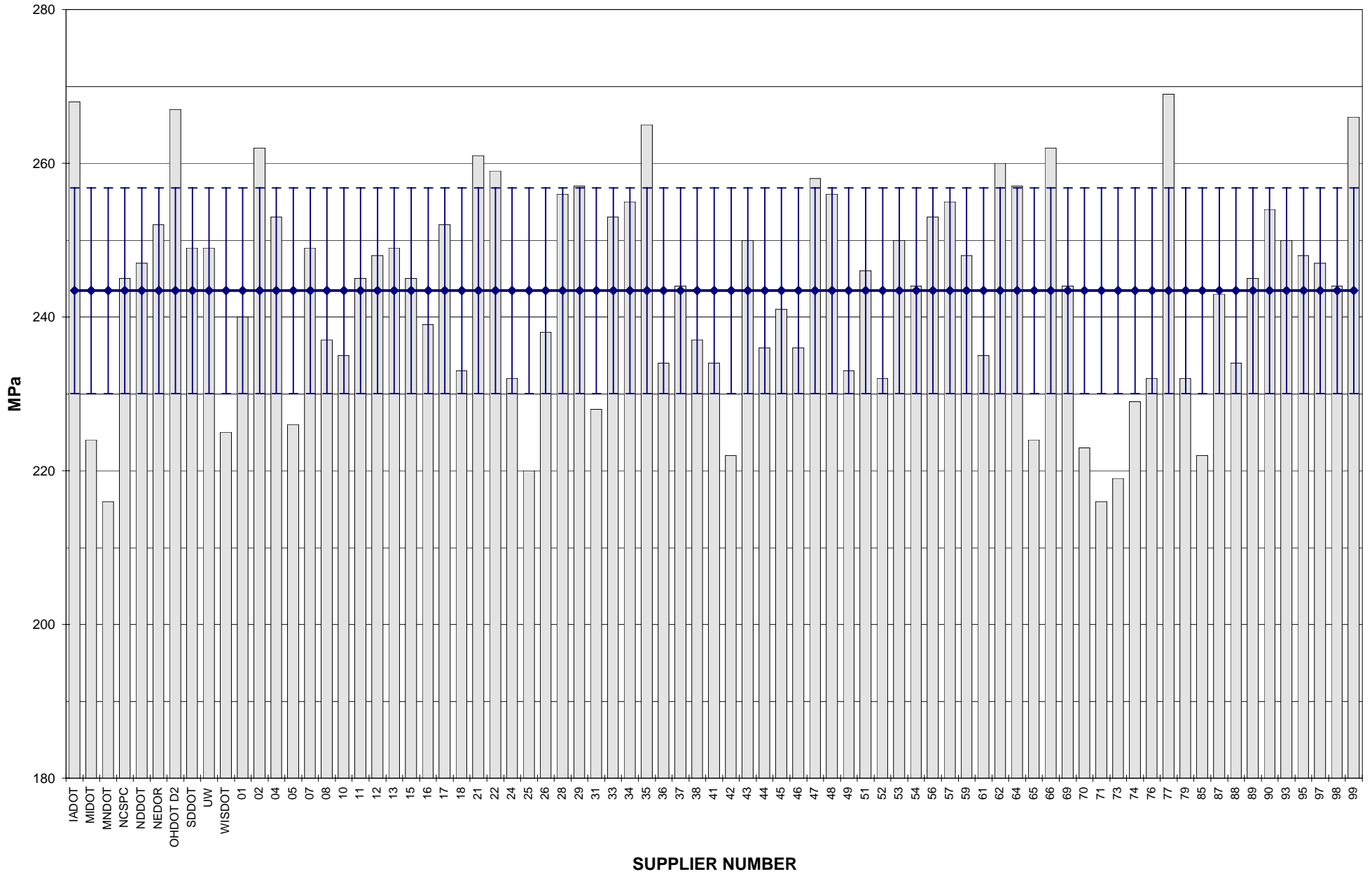
COMBINED STATE BINDER GROUP ROUND ROBIN 2006-2
SUMMARY A
PG 58-28
DSR - PAV



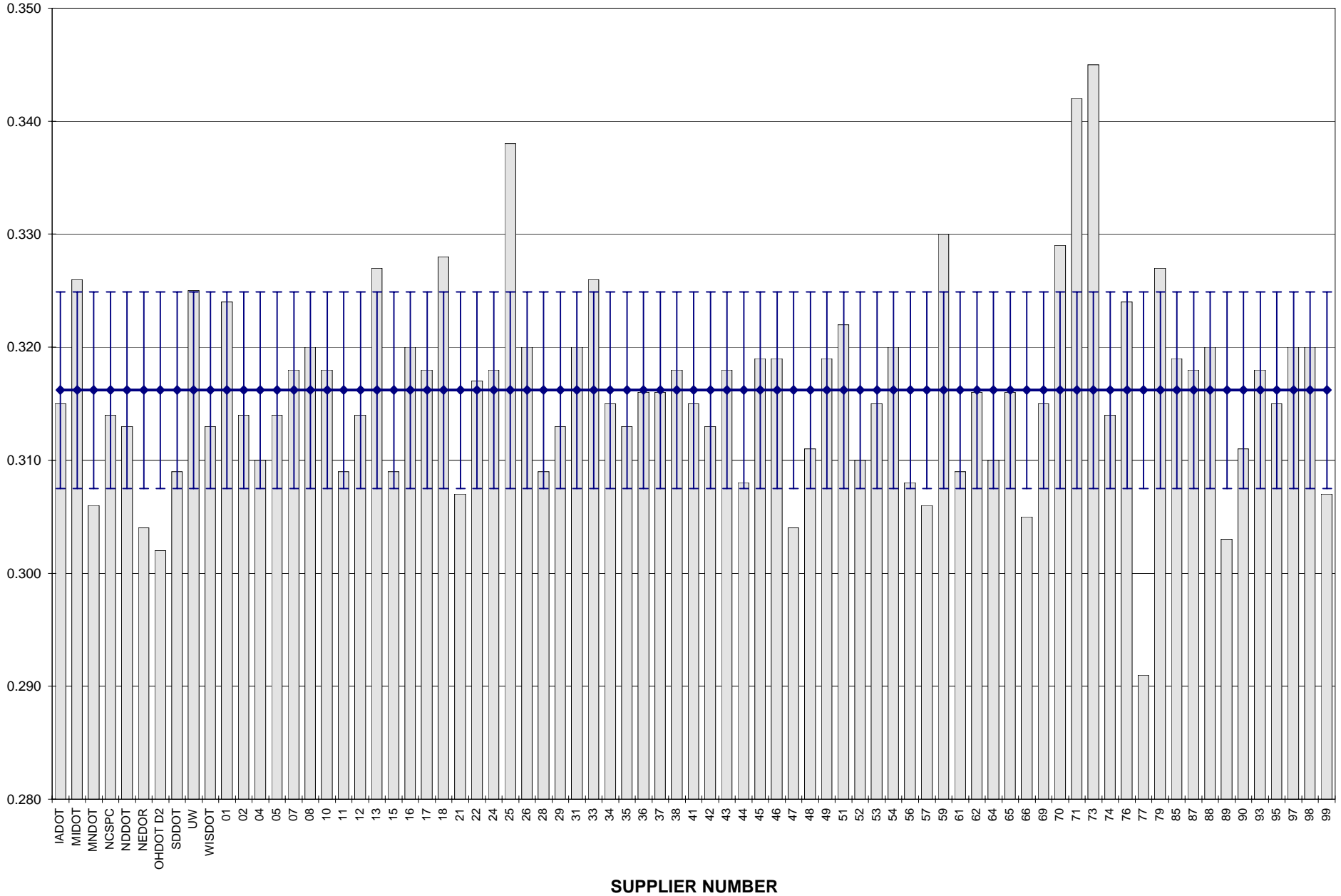
COMBINED STATE BINDER GROUP ROUND ROBIN 2006-2
 SUMMARY A
 PG 58-28
RTFO MASS LOSS



COMBINED STATE BINDER GROUP ROUND ROBIN 2006-2
SUMMARY A
PG 58-28
BBR STIFFNESS



COMBINED STATE BINDER GROUP ROUND ROBIN 2006-2
SUMMARY A
PG 58-28
BBR m-VALUE



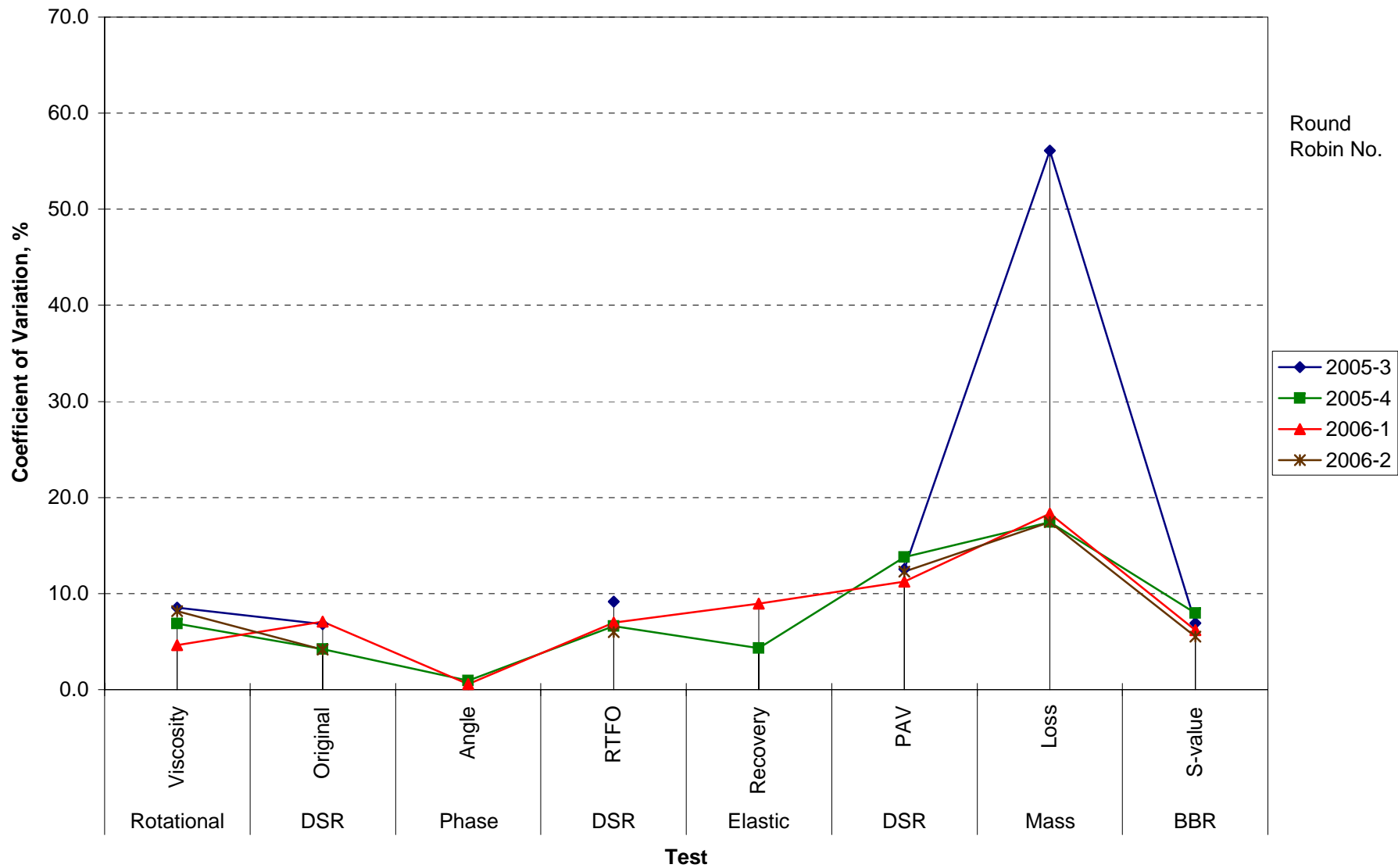
**COMBINED STATE BINDER GROUP ROUND ROBIN 2006-2
SUMMARY A**

COEFFICIENT OF VARIATION

Round Robin No.	Number of Participants	Coefficient of Variation, %									
		Rotational Viscosity	DSR Original	Phase Angle	DSR RTFO	Elastic Recovery	DSR PAV	Mass Loss	BBR S-value	BBR m-value	DTT Strain
2005-3	78	8.518	6.818		9.166		12.533	56.096	6.908	2.933	16.213
2005-4	78	6.893	4.191	0.958	6.616	4.333	13.815	17.441	7.971	3.495	20.270
2006-1	77	4.623	7.087	0.559	6.959	8.933	11.263	18.345	6.202	2.421	16.910
2006-2	77	8.182	4.138		5.992		12.270	17.442	5.496	2.752	36.040

COMBINED STATE BINDER GROUP ROUND ROBIN 2006-2
SUMMARY A

COEFFICIENT OF VARIATION



**COMBINED STATE BINDER GROUP ROUND ROBIN 2006-2
SUMMARY A
PG 58-28**

STATISTICS WITH OUTLIERS REMOVED:

	Rotational Viscosity (Pa.s) @135°C	DSR Original (kPa) @58°C	DSR RTFO (kPa) @58°C	DSR PAV (kPa) @19°C	Mass Loss (%) @163°C	BBR S-value (MPa) @-18°C	BBR m-value @-18°C
Average	0.2829	1.3024	3.4977	4,420.22	-0.5137	243.42	0.3155
Std. Dev.	0.0097	0.0539	0.2096	487.00	0.0708	13.38	0.0066
Coef. of Var.	3.413	4.138	5.992	11.017	13.784	5.496	2.084