

MultiSpec Exercise: Supervised Classification - Select Training Fields

Requirements: MultiSpec application and image titled “ag020522_DPAC_cd.lan”.

One can also do a supervised classification by selecting training areas for specified classes from known areas. Open the image if it is not already displayed in a multispectral image window following the guidelines given in exercise 1.

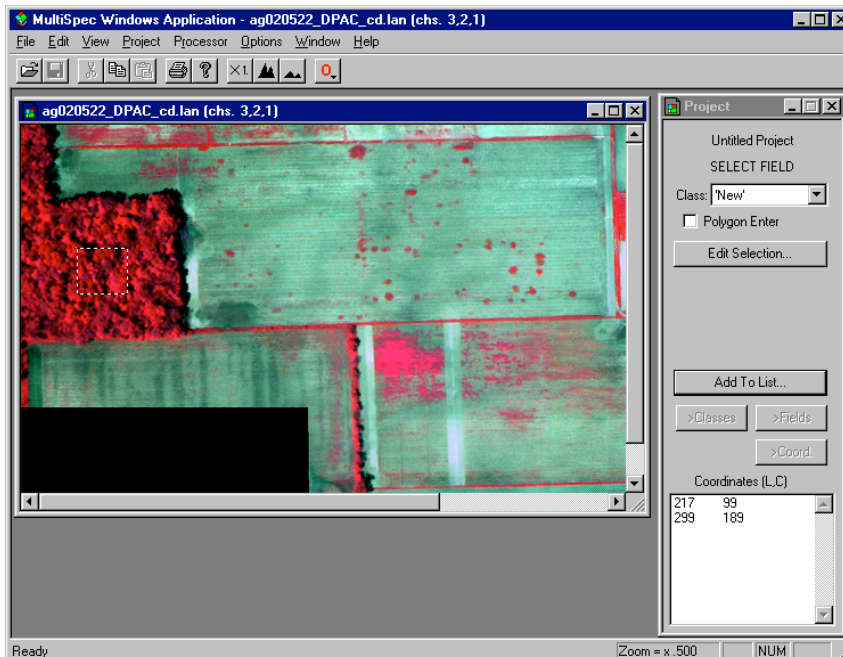
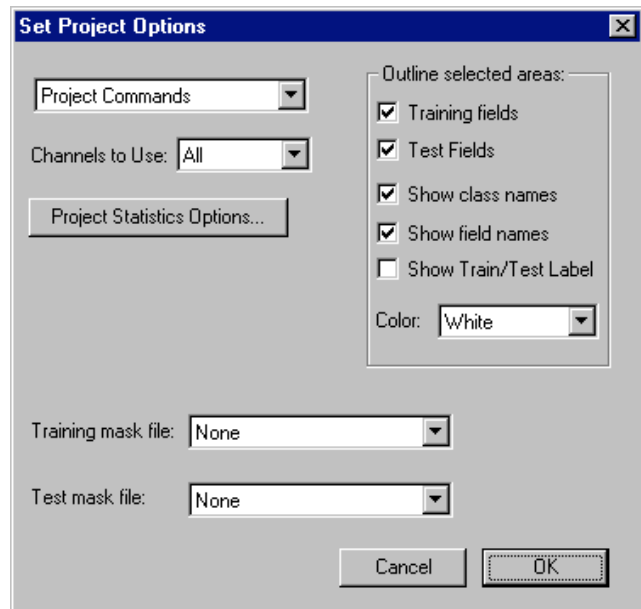
4.1 Select Training Fields

4.1.1 If a project window is open, from the **Window** menu, select **Project**, and then double click in the upper left to close the current project and project window. One may have been created during the cluster analysis.

4.1.2 Now one will select training fields.

From the **Processor** menu select **Statistics** and select **OK** in the Set Project Options dialog box. (The default settings for this exercise are satisfactory.)

A new window labeled **Project** will appear to the right of the screen that will be used in a moment. To select training fields for each class, one must simply "drag" a rectangular area on the image (or, with polygon option selected, click on the corners of the desired polygon), and then "Add that field to the list." Thus,



Drag from the upper left corner to the lower right corner of the Tree training field in the **image window**. If upon inspection, one does not like the exact boundaries resulting, one may immediately repeat the process.

Caution: A mistake that is made many times is to select training areas very near edges of a field. One should stay away from the edges by a couple of pixels to reduce the chance of edge affects.

Note in the **Project dialog box**, that the coordinates (row and column numbers) of the upper left corner and the lower right corner of the selected area appear in box near bottom. Now,

- 4.1.3 Select the **Add to list** button. A dialog box will appear to allow one to name the class and give the field a special designation, as desired. Thus, Type **Trees** into the Class Name box and then select **OK**.

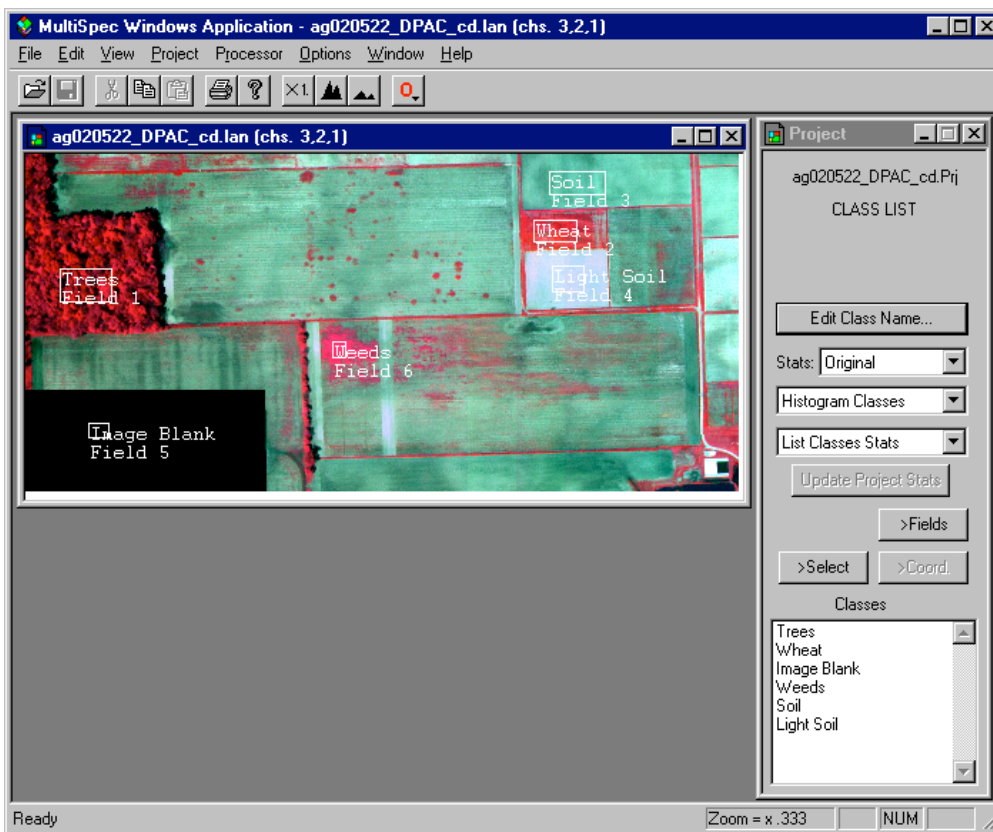
Note that one can designate the selected area as a training or test area.

- 4.1.4 Since there is to be only one training field for this class, we are ready to select the training for the second training class. Thus next,

Drag across the second training field in the **Image Window** shown below for Wheat.

Select the **Add to list** button in the **Project** window.

Select the training areas for the rest of the six classes – Image blank, Weeds, Soil, Light soil.



The Project Window can have four different modes – the Select training field mode, the Class list mode, the Field list mode and the Coordinate list mode. The modes are controlled by four buttons just above the list box at the bottom of the Project Window. The “>Select” button causes the Project window to be in the select mode. The “>Classes” button causes the Project classes to be displayed. The “>Fields” button causes the fields for the selected class to be displayed. The “>Coord.” button causes the coordinates for the selected field to be displayed.

One can delete a class by selecting the class in the class list and then selecting “Cut Class” in the Edit menu. One can also do the same for deleting a specific field.

One can also use polygonal type fields to define training classes. To do this, select the “Polygon Enter” checkbox in the Project Window when in Select mode. Click in the image window to define each corner of the polygon. Double click on the last point. To turn the polygon type selection off, just select the “Polygon Enter” checkbox to deselect it.

Note that the clustering step described in Exercise 3 can be useful in the classifier training step in determining how many classes might be separable in a given data set and where to define training areas such that the spectral characteristics of the pixels are similar.

4.2 Classification

4.2.1 From the **Processor** menu select **Classify...** In the Set Classification Specifications dialog box which appears, select the near **Image Selection** under Classify to de-select it since, during this pass, it is desired to classify only the training fields in order to obtain an initial estimate of the quality of the class definition and training.

Set Classification Specifications

Procedure:

Classes:

Class weights:

Channels:

Target: Base Image

Classify:

Class areas:

Training (resubstitution)

Training (leave-one-out)

Test areas (holdout)

Image selection

Write classification results to:

Disk file

Image Window Overlay

Threshold results at

Create Probability Results File

Area to Classify

| | Start | End | Interval |
|--------|--------------------------------|-----------------------------------|--------------------------------|
| Line | <input type="text" value="1"/> | <input type="text" value="709"/> | <input type="text" value="1"/> |
| Column | <input type="text" value="1"/> | <input type="text" value="1501"/> | <input type="text" value="1"/> |

Note that under **Write classification results to:** One can also select the **Disk File** button causing a disk file version of the results to be written. Since we have no need for this file in this case, leave this button unselected.

Since the other default options are satisfactory, select **OK** and then **Update** to the "Update Project Statistics" dialog box to begin the classification.

The classification will be complete momentarily.

4.2.2 From the **Window** menu select **Text Output**, to bring the text window forward and make it active, since it contains the classification results. The "TRAINING CLASS PERFORMANCE (Resubstitution Method)" table tabulates how the pixels of each field and class were classified. See example table below. There should be nearly 100% accuracy on the training fields. If the Reference Accuracy is particularly low (say less than 50%) for a class, then the training pixels for that class should be reexamined and new training pixels selected.

Classification of Training Fields

TRAINING CLASS PERFORMANCE (Resubstitution Method)

| Project Class Name | Reference Class Number | Accuracy+Number (%) Samples | Number of Samples in Class | | | | | | |
|---------------------------|------------------------|-----------------------------|----------------------------|---------|---------------|---------|--------|--------------|-------|
| | | | 1 Trees | 2 Wheat | 3 Image Blank | 4 Weeds | 5 Soil | 6 Light Soil | |
| Trees | 1 | 98.4 8249 | 8117 | 126 | 0 | 6 | 0 | 0 | |
| Wheat | 2 | 97.5 4277 | 102 | 4170 | 0 | 5 | 0 | 0 | |
| Image Blank | 3 | 100.0 1485 | 0 | 0 | 1485 | 0 | 0 | 0 | |
| Weeds | 4 | 97.9 1102 | 2 | 21 | 0 | 1079 | 0 | 0 | |
| Soil | 5 | 100.0 6069 | 0 | 0 | 0 | 0 | 6069 | 0 | |
| Light Soil | 6 | 100.0 3933 | 0 | 1 | 0 | 0 | 0 | 3932 | |
| TOTAL | | | 25115 | 8221 | 4318 | 1485 | 1090 | 6069 | 3932 |
| Reliability Accuracy (%)* | | | 98.7 | 96.6 | 100.0 | 99.0 | 100.0 | 100.0 | 100.0 |

OVERALL CLASS PERFORMANCE (24852 / 25115) = 99.0%
 Kappa Statistic (X100) = 98.6%. Kappa Variance = 0.000001.

+ (100 - percent omission error); also called producer's accuracy.

* (100 - percent commission error); also called user's accuracy.

4.2.3 Assuming satisfactory results, we are ready to classify the whole area. From the **Processor** menu choose **Classify**...

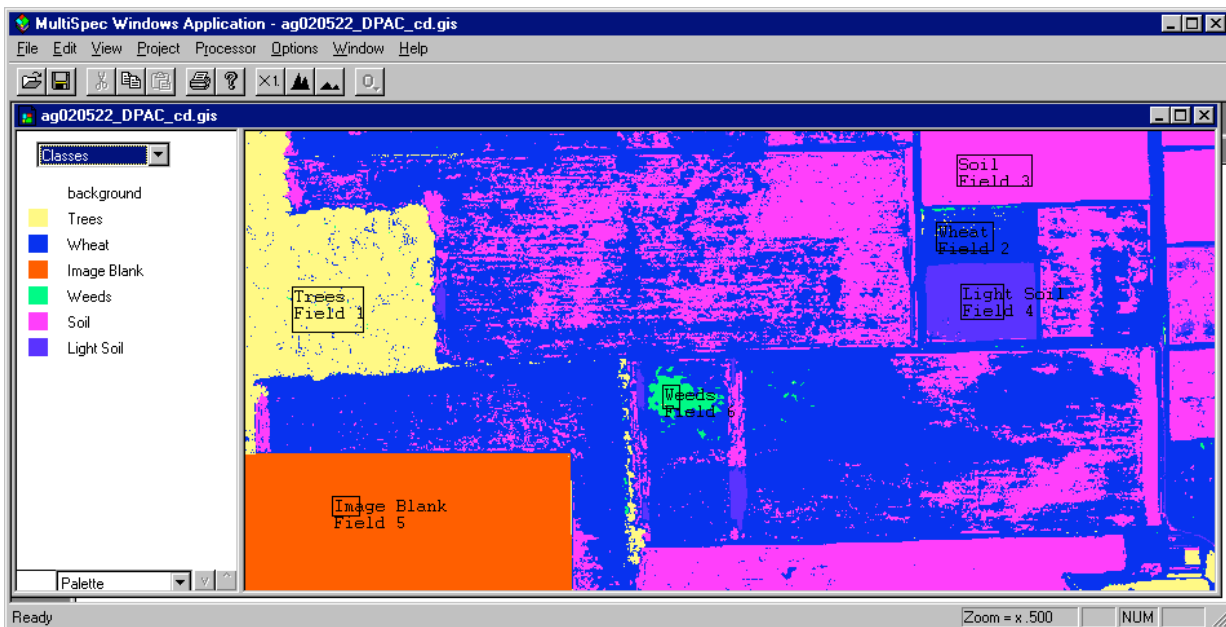
- Under **Areas to Classify** de-select **Training (resubstitution)** by selecting the \surd by it, and,
- Select **Image selection**. Make sure that the entire area of the image is to be classified (lines 1-709 and columns 1-1501). Select the square button, if activated, to the left of lines and columns, to force all lines and columns in the image to be used.
- Also select **Disk File** under **Write classification results to:** so that a disk file for later use will be created.
- One can also select **Image Window Overlay** to cause the classification to be displayed as an overlay on the multispectral image window if you wish to.
- Also select the **Create Probability Results File** checkbox so that a classification probability map will be saved to a disk file.
- Then select **OK**.
- Select **Save** in the dialog box that follows regarding a file name for the results. We will use the default name and location for the output classification file and for the probability map file.

As soon as the classification is complete, one will see a summary of the results displayed in the text window.

4.2.4 You save the project using the **File**→**Save Project** menu item. You will be presented with a dialog box to enter the name (or use the default name). The training and test areas that you selected will be saved. You can open this file up at a later time to continue your analyses.

4.3 View Classification Map.

4.3.1 Now open the classified image named “ag020522_DPAC_cd.gis”. It should appear similar to the image below. This is a Thematic type image.



4.3.2 After displaying the classified image “ag020522_DPAC_cd.gis”, from the **Project** menu, select **Add as Associated Image** to cause the training field outlines to be drawn on the image. You can change the field outline color to black using the **Processor->Statistics...** menu item and selecting “Black” in the Color popup under the “Outline selected areas:” group.

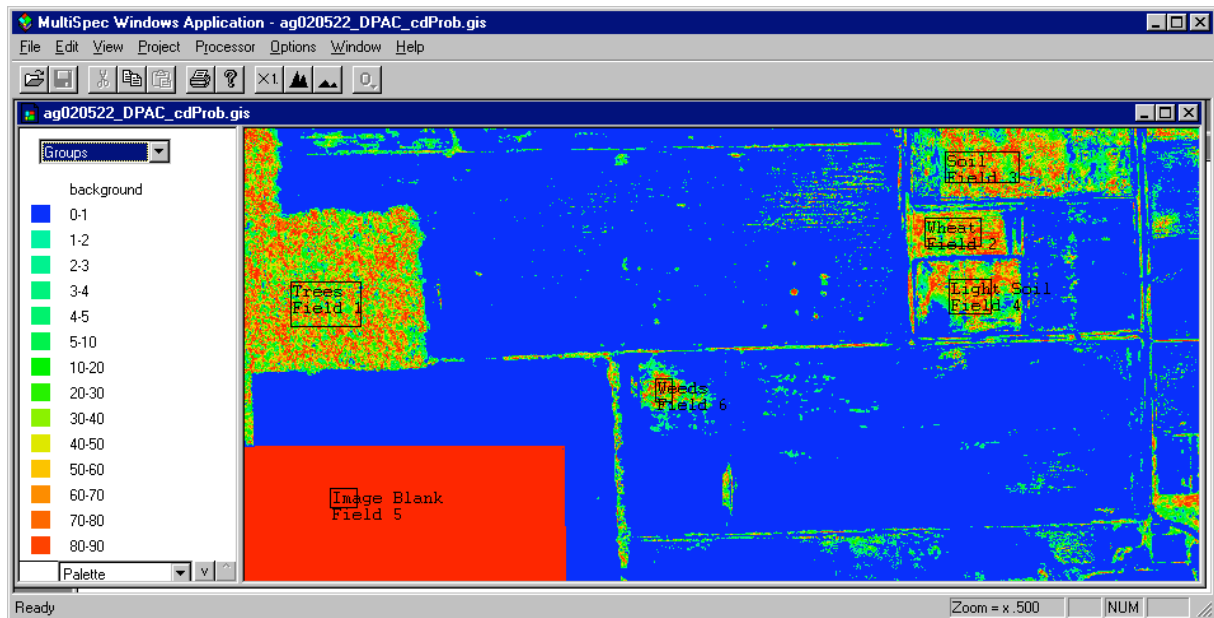
There are some things that one can do to evaluate the results. One is to move the cursor over a color chip, hold the shift key down (cursor will change to an open eye) and click the left mouse button down and up to cause the colors for that class to blink off and on (alternate between white and the color). If one holds down both the shift and ctrl keys and then clicks the left mouse button down and up, then all of the other classes will blink off and on. These procedures are helpful in understanding the extent of the classes in the image and to determine where classification errors may be. One may need to change training fields or add other classes if there appears to be confusion between the categories that you wish to identify.

One can also change the class color by double clicking on the color chip as was done in the cluster section.

4.4 Classification Probability Map.

One can view the classification probability map to evaluate which portions of the image have lower and higher probabilities of being classified correctly. There may be other classes in the image that our training fields do not adequately represent.

4.4.1 Open the probability map named “ag020522_DPAC_cdProb.gis”. It should appear similar to the image below after associating it to the Project. This is a Thematic image.



Yellow to red colors represent a high probability of being correct. These pixels are very close to our training pixels for the classified class. Dark green to blues represent a low probability of being correct. These pixels are very far from the training pixels for all of the classes. The classified image though may still represent the area well enough for our purposes. For our classification, we could probably do a better job of separating out the sparse weeds from the wheat. There are probably more than the six classes that we selected than can be separated successfully.

Concluding Remarks

There are many other operations that one can do with MultiSpec including several Reformatting processes. See other exercises or the MultiSpec Introduction at the MultiSpec web site for more information. The MultiSpec web site is: <http://dynamo.ecn.purdue.edu/~biehl/MultiSpec/>. Or contact Larry Biehl at biehl@purdue.edu with questions.