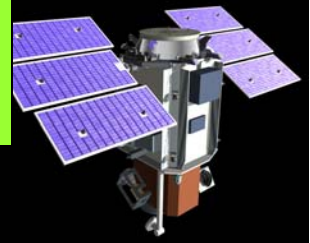
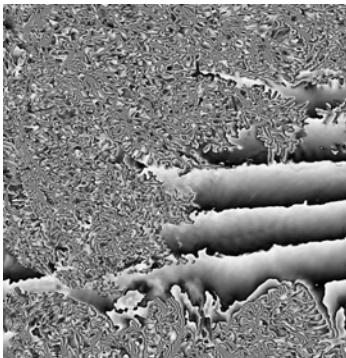


GRAD 590F Exploitation of Spaceborne Imaging Systems
Spring 2008, T,TH 1:30 POTR 268 & via Distance Learning
Instructor: Jim Bethel
765-494-6719, Email: bethel@ecn.purdue.edu
Web: <http://cobweb.ecn.purdue.edu/~bethel>



Photogrammetry and Mapping with High Resolution Commercial Satellite Imagery

- Radiometry, Resolution
- Rigorous Sensor & Platform Models, Error Propagation
- Replacement Models, RPC Estimation and Use
- Stereo Acquisition
- 3D Scene Reconstruction
- Detailed Analysis of one of Worldview, Quickbird, Eros A



Satellite Based Synthetic Aperture Radar (SAR) Imagery and SAR Interferometry (InSAR / IFSAR)

- Radar Fundamentals
- Signal Characteristics
- Image Formation Algorithms
- Geopositioning and Error Propagation
- Interferometric Processing
- DEM Generation
- Detailed Analysis of ERS 1&2

