

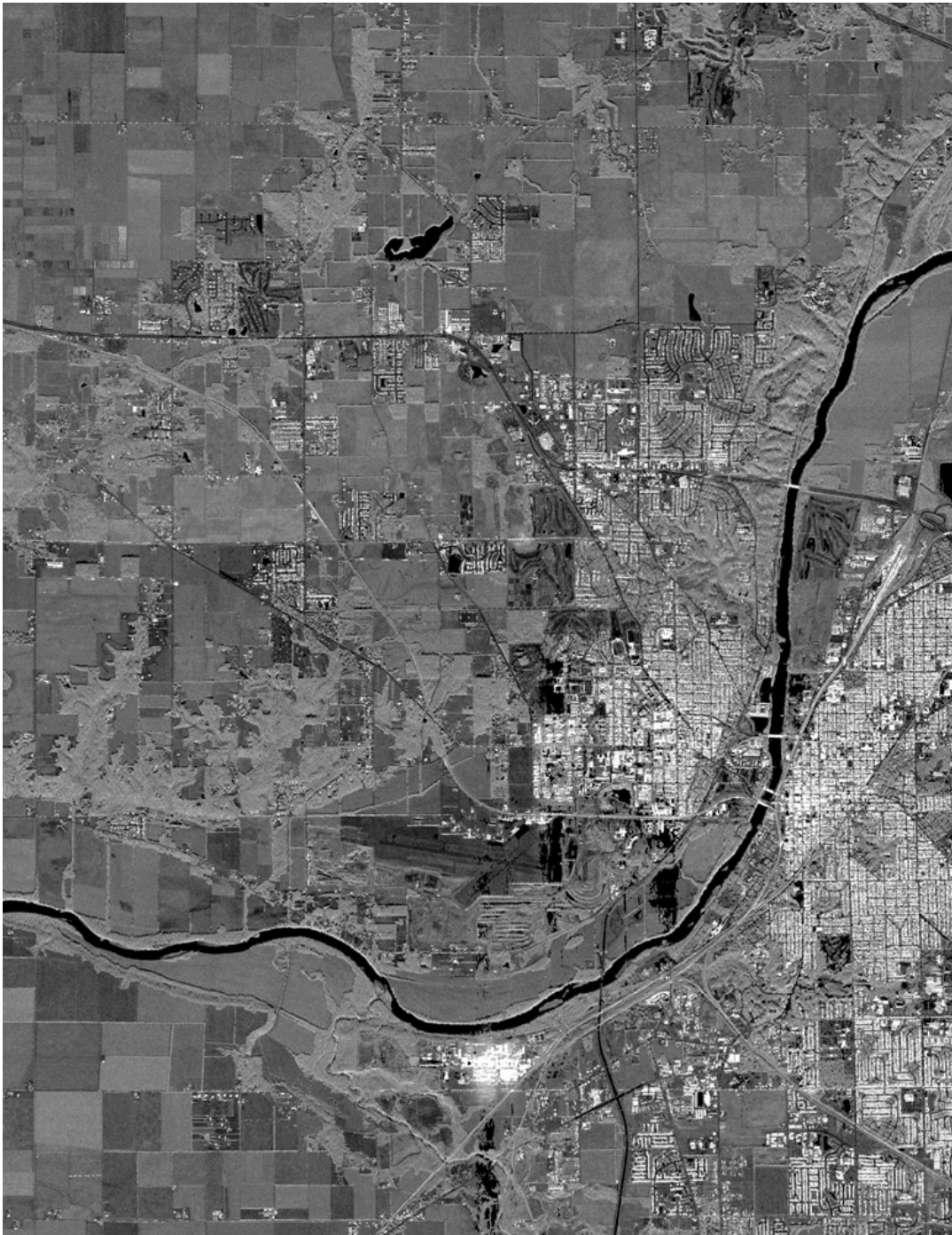


Perils of E/O satellite image collection: CLOUDS. You have to image on the satellite schedule rather than your own. Can partially compensate by accepting views with large tilt – but that can make operations like change detection difficult. This is one image of a stereo pair collected by OrbView 3 at nominally 1 meter GSD. Its fine as long as your area of interest is not under one of the clouds.









Airborne SAR – collected between 2-4 am on a cloudy night. Commercial SAR satellites available but spatial resolutions so far have been low (ERS1: 12m) Radarsat 2 may have 1-2 meter mode.

Comparison of approximately same area with passive, E/O, panchromatic on the left and Ku-band SAR on the right. Note differences in gray level response, speckle, and bright returns from dihedral / trihedral objects.

E/O Orbview 3



RTV Airborne SAR

