



Purdue University

Agricultural Safety and Health Program

1999 Indiana Farm Fatality Summary

Compiled by the Purdue University Agricultural Safety and Health Program

Agricultural and Biological Engineering Department
Purdue University
West Lafayette, IN 47907

For additional information contact:

Aaron M. Yoder at (765) 494-5088, or Dr. Bill Field at (765) 494-1191

The 1999 farm fatality report was compiled by the Purdue Agricultural Safety and Health Program through a variety of sources, including news reports and personal interviews. In 1999 no cases were identified with the assistance of the Indiana Fatality Assessment and Control Evaluation (FACE) Program at the Indiana State Department of Health, which documents occupational fatalities identified through coroners' reports, as well as news articles and on-site investigations.

The report includes 22 farm work-related fatalities¹ that occurred in 1999. This is an increase from the 16 fatalities reported in 1998, which was the lowest number of reported fatalities in the 50 plus year history of Purdue's farm injury reporting efforts. The average age of 1999 farm fatality victims was 49 (Table 1). All known cases involved males. Two (9%) of the fatalities identified involved children and adolescents under the age of 17 which is similar to the average of 11% over the past five years. Only 37% of the recorded fatalities resulted from incidents involving tractors as compared to some years in the past when over 75% involved tractors (Figure 1). Overturns of tractors not equipped with ROPS still remains the leading cause of farm work-related fatalities nationally accounting for approximately 25% of all fatalities. However, only one rollover fatality was identified in Indiana in 1999. Runovers and roadway collisions were the two leading types of fatal incidents. Table 2 summarizes the types of incidents associated with Indiana's 1999 farm fatalities.

¹ A **farm work-related fatality** is defined as any fatal injury to a farm or ranch worker (or bystander) occurring in the course of performing an agricultural work-related task, or as a result of exposure to hazards in the agricultural workplace. Motor vehicle incidents not clearly involving agricultural equipment are excluded.



Table 1. Demographics of 1999 Indiana Farm Fatalities.

Gender	Age Distribution					Total	%
	1-17	18-35	36-59	60+	Unk		
Males	2	3	10	6		21	95.5
Females							
Unknown					1	1	4.5
Total	2	3	10	6	1	22	100
%	9.1	13.6	45.4	27.3	4.6	100	
Average Age	7	27	49	75		49	

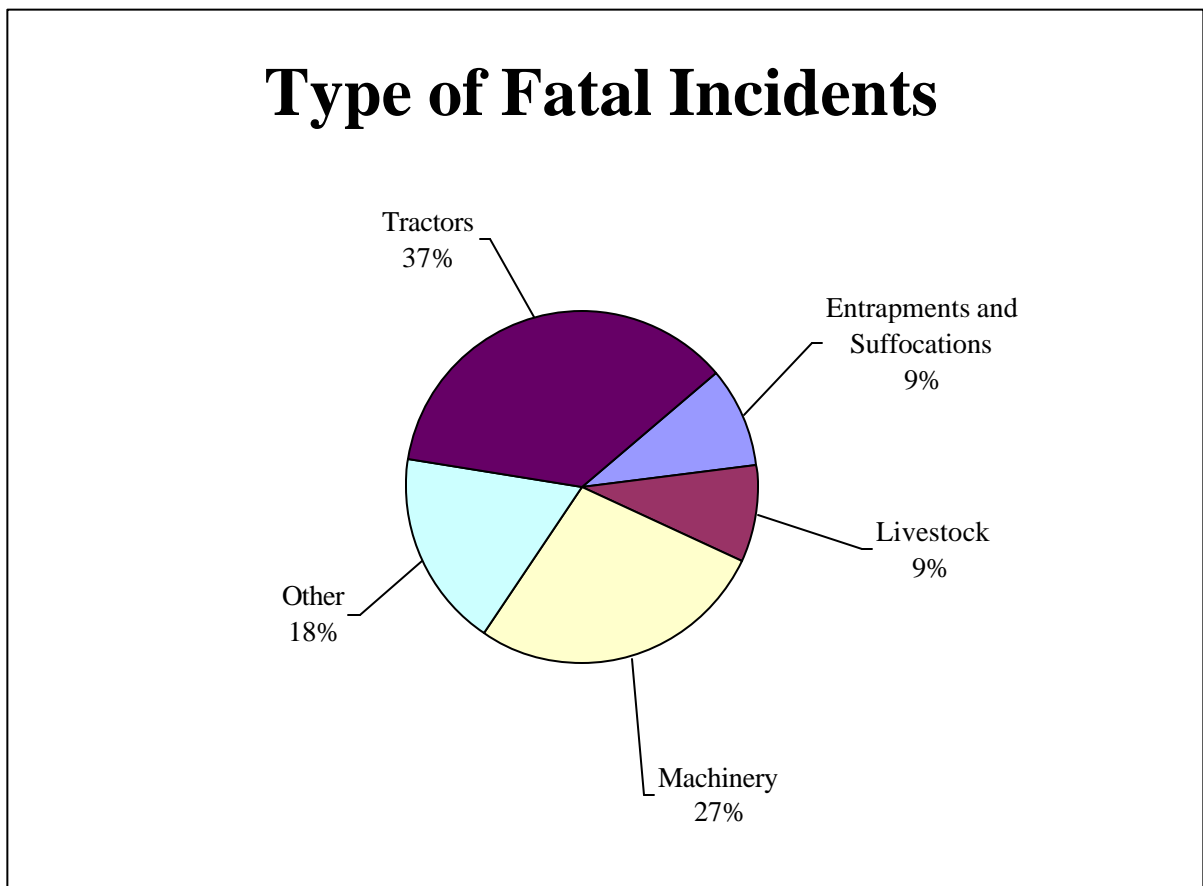


Figure 1. 1999 Indiana Farm Fatalities by Type of Incidents.



Table 2. 1999 Indiana Farm Fatalities by Type of Incidents.

Type of Incident		Fatalities
Entrapments or suffocations	Grain entrapments	1
	Gas asphyxiations (manure pit)	1
Falls	From farm structures	0
	While on ground	0
Livestock-related incidents	Horse-drawn wagon incidents (Primarily runovers)	1
	Kicked by horse	0
	Attacked by bull	1
Machinery-related incidents	Other entanglements	0
	PTO entanglements	1
	Crushings	2
	Runovers	1
	Electrocution	2
Tractor-related incidents	Overturns	1
	Roadway collisions	3
	Runovers	3
	Crushings/pinnings	1
	Struck by front-end loader	0
Other incidents (struck/crushed by flying/falling objects, heat stroke)		4
Total		22

Table 3 provides a listing of fatalities occurring in Indiana counties in 1999. Fatal farm work-related incidents are described here by (1) date of incident, (2) county of report (3) age of victim, (4) gender of victim, (5) description of circumstances surrounding the incident, and (6) Farm and Agricultural Injury Classification (FAIC) Code. The FAIC code is used to facilitate consistent and accurate classification of farm and agriculturally related injuries. For more information on the FAIC code contact the Purdue Agricultural Safety and Health Program. Figure 2 presents a geographic distribution of Indiana's farm-related fatalities in 1999.



Table 3. 1999 Indiana Farm Fatalities by Date.

	Date	County	Age	Sex	Description of incident	FAIC
1	2-8-99	Clark	40	M	Injured by mother cow protecting young	01
2	3-9-99	Noble	53	M	Pinned between tractor and wagon while cutting wood	Und
3	3-30-99	White	81	M	Burns and fuel tank explosion	01
4	4-3-99	Elkhart	48	M	Runover by horses while attaching manure spreader	01
5	4-14-99	Warren	53	M	Grain bin suffocation	01
6	5-1-99	Hamilton	67	M	Tractor runover	Und
7	5-25-99	Morgan	69	M	Tractor runover	Und
8	6-28-99	Morgan	83	M	Accidental Shooting- using gun as brace to exit tractor	Und
9	6-30-99	Whitley	U	U	Tractor hit by train	Und
10	7-3-99	Wabash	43	M	Complications from manure gas in pit	01
11	7-5-99	Warren	25	M	Electrocuted in grain bin	01
12	7-5-99	Bartholomew	28	M	Electrocuted while repairing irrigation system	01
13	7-17-99	Tipton	57	M	Crushed by loader/forklift	Und
14	7-24-99	Warren	84	M	Runover by tractor- knocked off tractor by tree branch	Und
15	7-31-99	Perry	44	M	Tractor hit by car on highway	Und
16	8-12-99	Jefferson	13	M	Dirtbike hit by tractor	09
17	8-21-99	Washington	65	M	Pinned under tractor- tractor rolled over while stacking hay with loader	01
18	8-23-99	Benton	56	M	Caught under mower while removing tangled wire	01
19	9-24-99	Franklin	19 Mo	M	Run over by combine while playing near field	06
20	10-10-99	Jasper	42	M	Combine accident	01
21	10-23-99	Franklin	55	M	Tractor hit by car on highway	01
22	12-7-99	Vermillion	27	M	PTO Entanglement- feed grinder	01



Figure 3 presents a trend of identified farm-related fatalities over the past 30 years. It is believed that 1998 recorded the lowest number of fatalities of any year since Purdue's Agricultural Safety and Health Program has been keeping records. The 1999 data, though showing an increase of four deaths, also followed the decreasing trend in the number of farm fatalities.

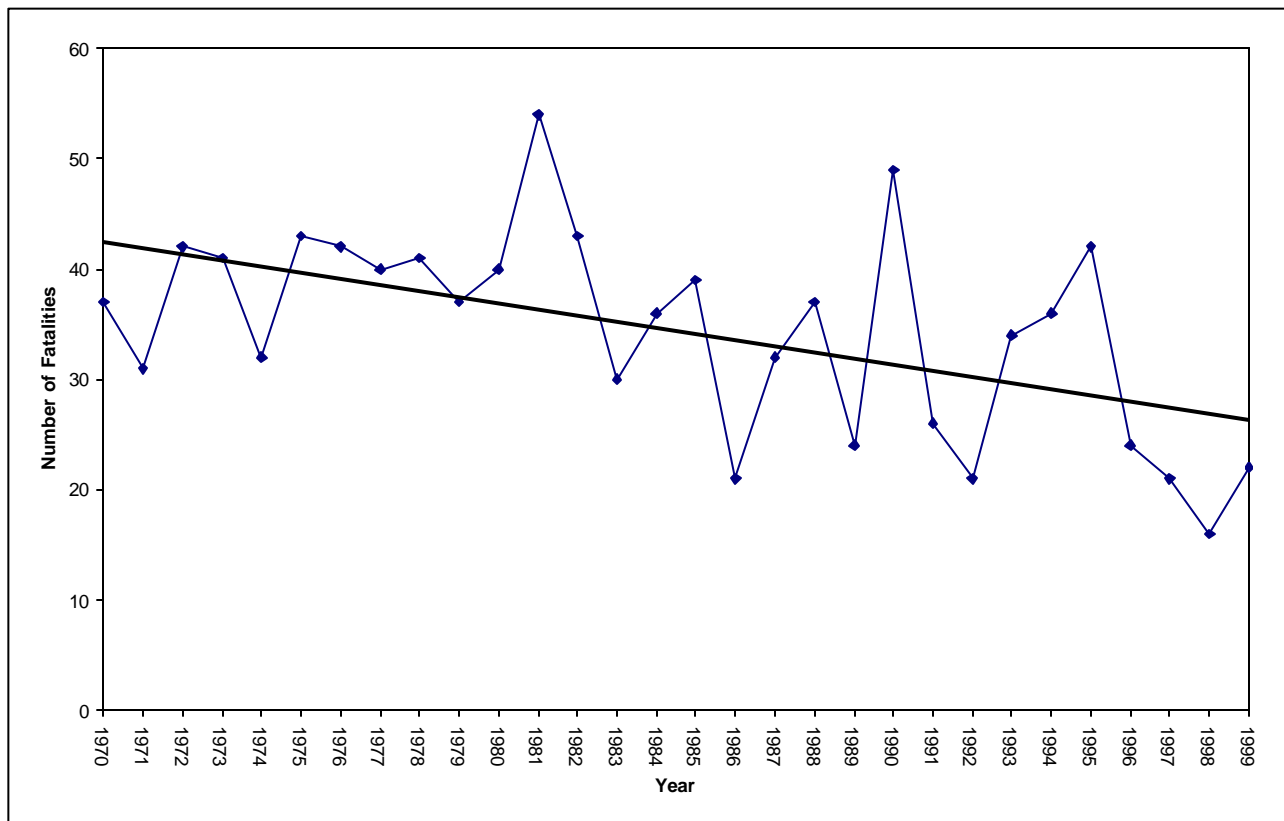


Figure 3. Annual Summary of Farm-related Fatalities.

For additional information on agricultural safety and health resources, check out the www.farmsafety.org website or call 765-494-1191.

