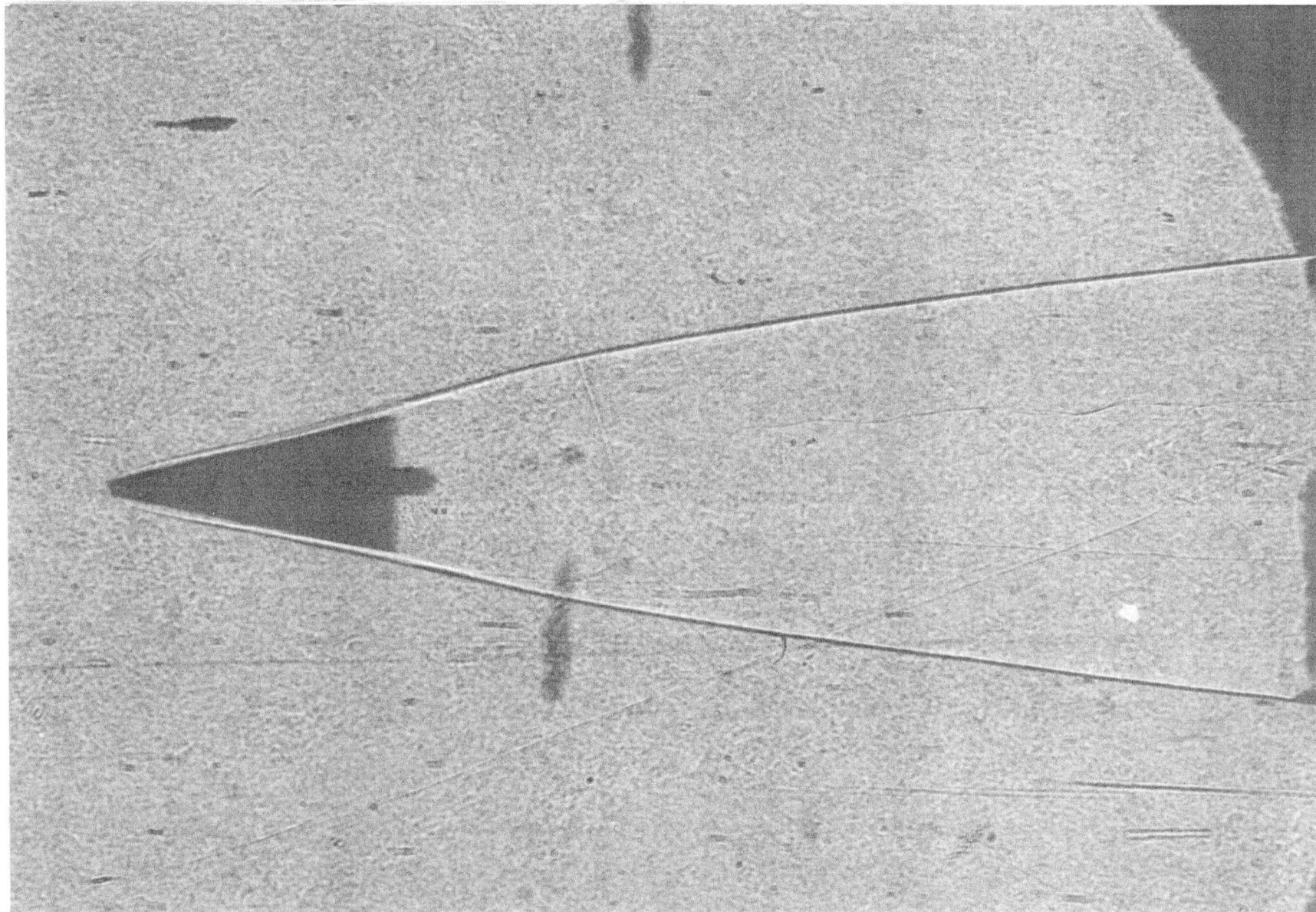


Ames Research Center, NASA  
Moffett Field, Calif.

A-29463



12.5° cone with rounded tip  $\left(\frac{r_{\text{tip}}}{r_{\text{base}}} = 0.125\right)$  at  $\beta = 0.89^\circ$  ( $\alpha = 0.91^\circ$ ),  $M_\infty = 17.9$ ,  $R_\infty = 2.81 \times 10^6$   
based on  $d = 0.450$  in.,  $\rho_\infty = 0.0009442$  slugs/ft<sup>3</sup>,  $T_\infty = 188.0^\circ$  R.