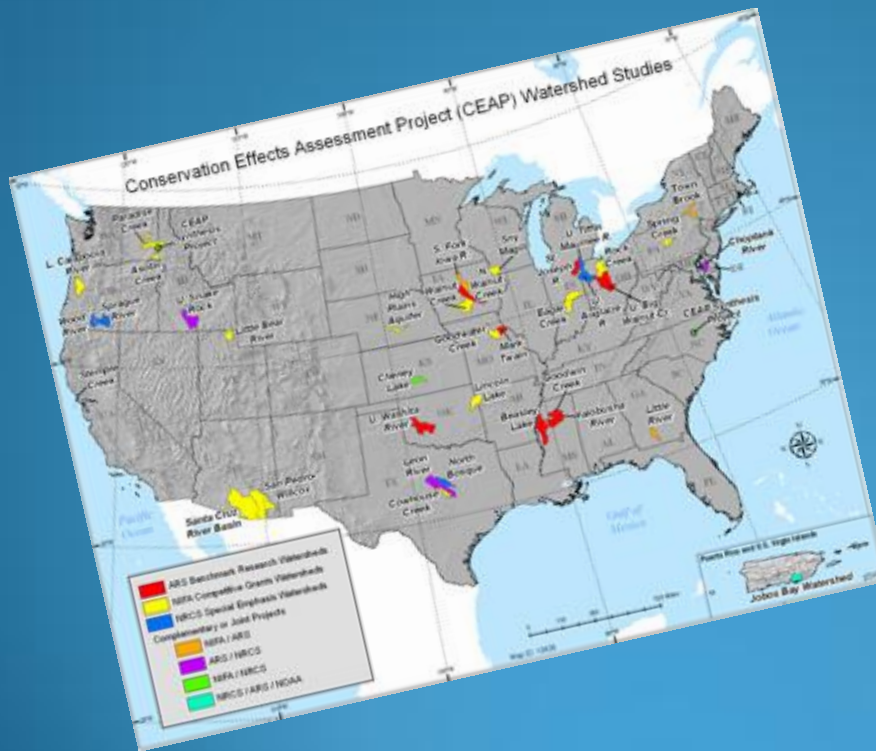


NRCS & Monitoring

Jill Reinhart, Assistant State
Conservationist for Special Projects



WHY is NRCS Involved in Monitoring?

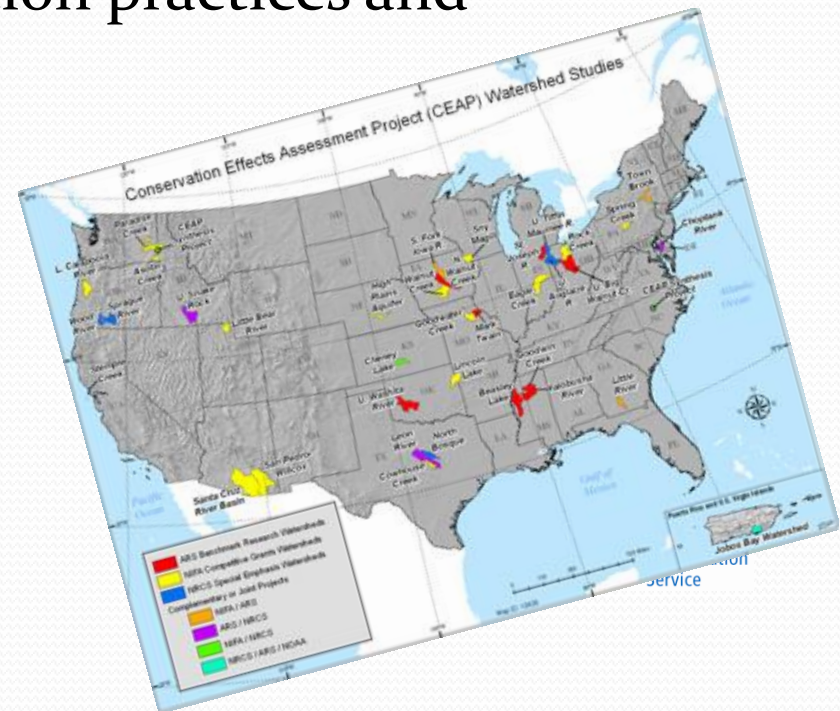
Conservation Effects Assessment Program (CEAP)

<http://www.nrcs.usda.gov/wps/portal/nrcs/main/national/technical/nra/ceap>

(Google NRCS CEAP)

“CEAP is a multi-agency effort to quantify the environmental effects of conservation practices and programs. ”

- Ag Research Service
- USGS
- Natl. Institute of Food & Ag (formerly CSREES)



Monitoring and Initiatives

Mississippi River Basin Initiative (MRBI)

http://www.nrcs.usda.gov/wps/portal/nrcs/detailfull/national/programs/farmbill/initiatives/?&cid=nrcsdev11_024120

(Google NRCS MRBI)

- Monitoring and Evaluation, Interim Conservation Practice 799 (Revamping to be an Activity)

National Water Quality Initiative (NWQI)

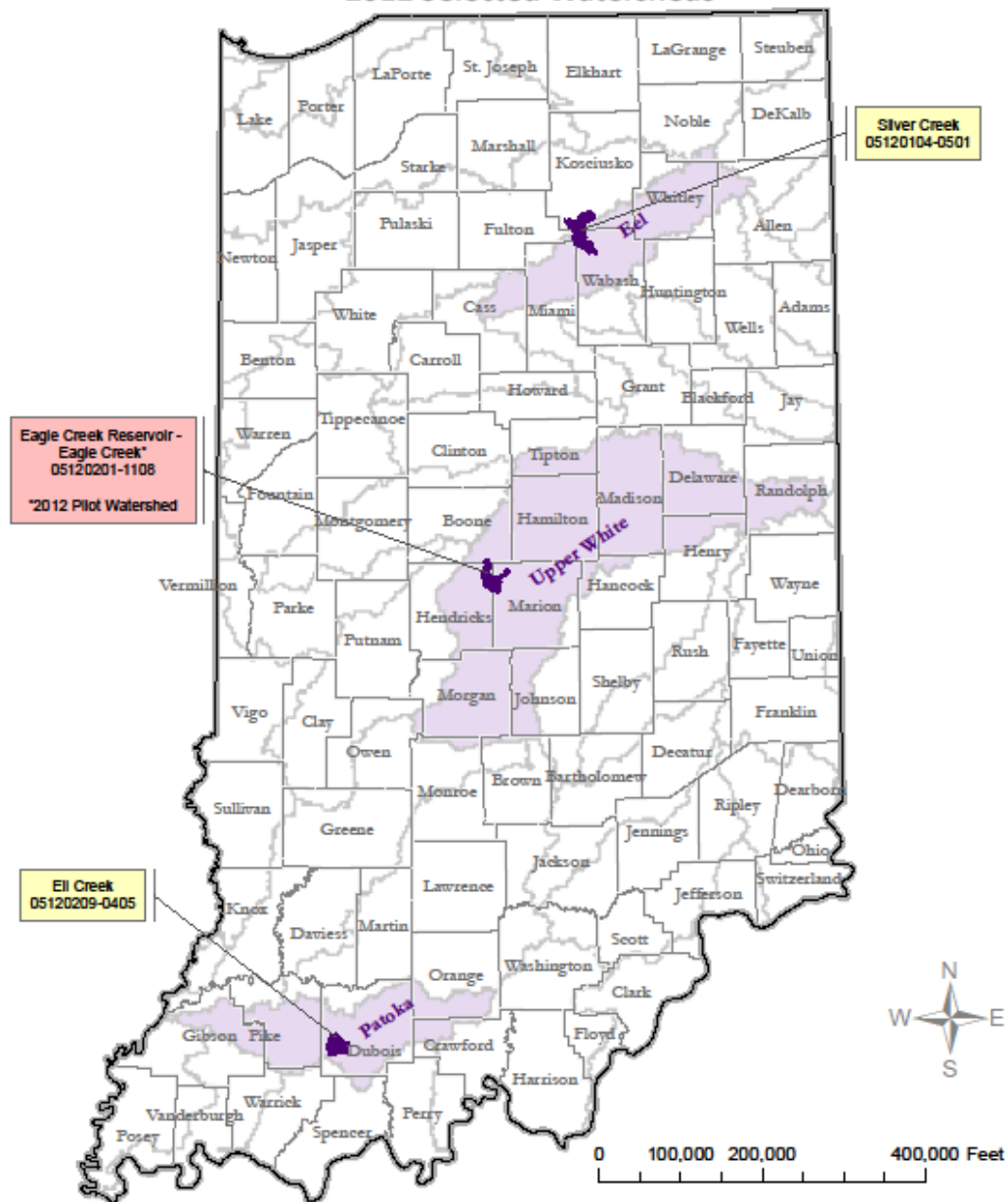
<http://www.in.nrcs.usda.gov/programs/eqip/nwqi.html>

(Indiana NRCS page, Programs Tab, under EQIP)



National Water Quality Initiative (NWQI)

2012 Selected Watersheds



IDEM/NRCS WQI FY12 Watersheds Selected

ZIONSVILLE
PARKS & RECREATION DEPT.

USGS Gage 03353200
Eagle Creek at Zionsville

The water quality here at Eagle Creek is heavily influenced by what happens upstream and in the Eagle Creek Watershed as a whole. A watershed is an area of land where all precipitation eventually flows into the same stream. Almost everything that goes onto land can be washed away by rain and snow, ending up in waterways. This water becomes our drinking water. How we manage the land in our watershed has a big impact on the quality of the water we drink and use. Many simple actions can help to reduce the amount of unwanted materials that reach our streams and improve overall water quality. Here are some things you can do:

- Reduce or eliminate the use of fertilizers and pesticides on lawns
- Avoid pouring house or lawn waste down sinks or in storm drains
- Clean up after your pet
- Plant native trees, shrubs and ground cover to filter runoff

Water resource managers in Indiana are looking to watershed management measures such as the installation of best management practices (BMPs) on the landscape to improve water quality. In order to assess the impact of these management practices, long-term water quality data are needed. To learn more about the water quality of Eagle Creek, scientists at the United States Geological Survey installed this "super gauge" below. It is a large array of electronic equipment that provides remote sensing of several water quality parameters that are transmitted via satellite and can be viewed in real time. To view this Eagle Creek water quality data, visit <http://waterdata.usgs.gov/in/nwis/rt/> and search for USGS Gage 03353200 - Eagle Creek at Zionsville.

Mobile users can scan the QR code above to view the current data.

Special thanks to USGS, IDEM and the Town of Zionsville for funding this ongoing station. This sign has been funded by the Eagle Creek Watershed Alliance and the Indiana Department of Environmental Management, IDEM, through the United States Environmental Protection Agency under an assistance agreement (C-97-001-00-10-USA).



Indiana Special Projects/Initiatives

Cooperative Conservation Partnership Initiatives (CCPI)

- Hoosier National Forest, DNR - Forestry
- Greene, Knox and Sullivan, SWCDs - Irrigation
- Wildcat Creek, GWRC&D - Invasives
- STATEWIDE - DNR Forestry

Mississippi River Basin Initiatives (MRBI)

- Hickory Branch, UWRBC
- Middle Eel, Manchester College
- Upper East Fork White, SWCDs
- Upper Eel River, Whitley SWCD
- Upper Wabash, TNC WREP
- Upper Wabash, TNC Two Stage Ditch
- Wildcat Creek, GWRC&D

Other NRCS Initiatives

Agricultural Water Enhancement Program (AWEP)

- St. Joseph Watershed, MACD
- LaPorte County, SWCD

Conservation Reserve Enhancement Program (CREP)

- Highland-Pigeon, Lower East Fork White, Lower Wabash, Lower White, Middle Wabash-Escaper, Middle Wabash-Deer, Middle Wabash-Little Vermilion, Tippecanoe, Upper East Fork White, Upper Wabash and Upper White Watersheds

Great Lakes Restoration Initiative (GLRI)

- Auglaize, St. Joseph-Maumee, St. Marys and Upper Maumee Watersheds

Healthy Forest Reserve Program

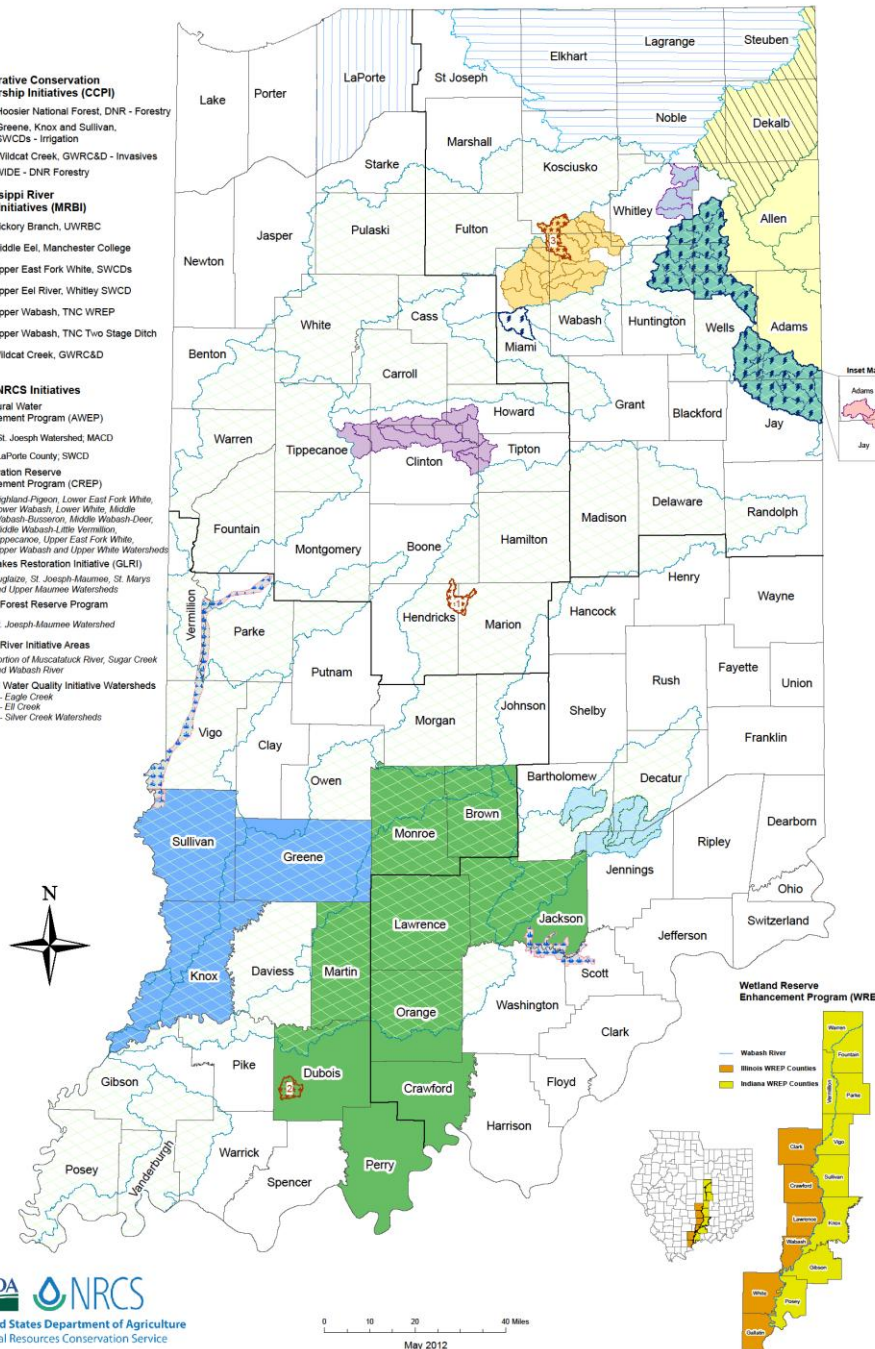
- St. Joseph-Maumee Watershed

Healthy River Initiative Areas

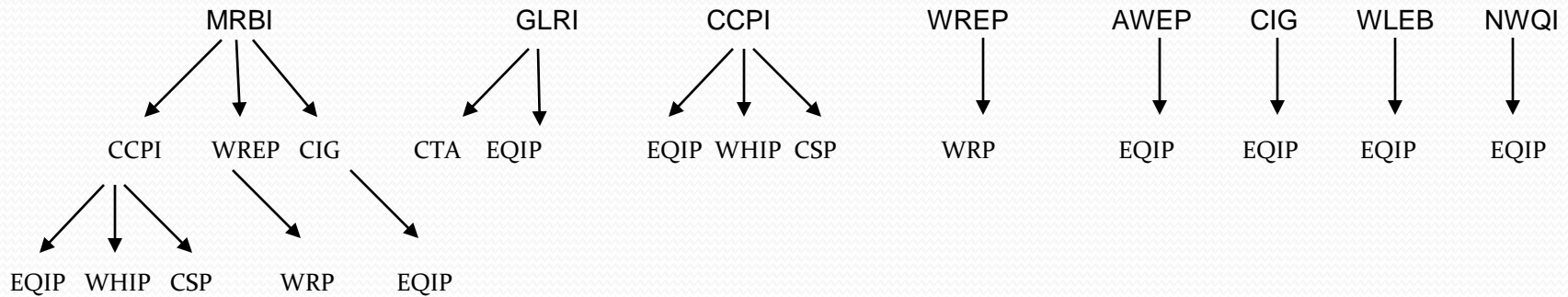
- Portion of Muscatuck River, Sugar Creek and Wabash River

National Water Quality Initiative Watersheds

- 1 - Eagle Creek
- 2 - El Creek
- 3 - Silver Creek Watersheds



Alphabet Soup: NRCS Initiatives & Partnership Opportunities



MRBI=Mississippi River Basin Healthy Watershed Initiative (administered through CCPI, WREP, CIG)

GLRI=Great Lakes Restoration Initiative

CCPI=Cooperative Conservation Partnership Initiative (administered through EQIP, WHIP, CSP)

WREP=Wetlands Reserve Enhancement Program (administered through WRP)

AWEP=Agricultural Water Enhancement Program (administered through EQIP)

CIG=Conservation Innovation Grants (grants awarded under EQIP authority)

WLEB=Western Lake Erie Basin (administered through EQIP)

NWQI=National Water Quality Initiative (administered through EQIP)

CTA=Conservation Technical Assistance (for staff and partnership agreements)

EQIP=Environmental Quality Incentives Program

WHIP=Wildlife Habitat Incentive Program

CSP=Conservation Stewardship Program



Jill Reinhart
ASTC Special Projects
317-295-5883
Twitter @IndianaNRCS

<http://www.in.nrcs.usda.gov/>

