



Indiana Water Monitoring Inventory

<http://inwater.agriculture.purdue.edu/monitoring/>

Introduction

The Indiana Water Monitoring Inventory is a central hub for monitoring locations and information about water monitoring data collected in the state of Indiana. The Inventory provides information on (1) where people are monitoring in Indiana, (2) certain information about what they are monitoring, and (3) contact information for the data holders or their website for more information. The Inventory does not contain actual water quality data, but points to the data holder who can provide it.

Monitoring locations

There are more than 5,400 monitoring locations throughout Indiana in the Inventory, provided by nearly 30 agencies and organizations (See box at right). Locations include Indiana's streams, lakes, reservoirs and groundwater wells.

Location information

Detailed information for each monitoring location within the Inventory is provided, including:

- Name of the agency or organization that collected the data.
- Name of the location and site number, as determined by the data collector.
- Parameter/type of data collected (e.g., water flow, E. coli, total phosphorus, etc.).
- Frequency of sampling at a monitoring location.
- Availability of monitoring data to the public.
- Duration of sampling.
- Latitude/longitude, which can be determined by Google Maps or GPS.
- Contact information/Web links for obtaining more information or data.

Organizations that have provided monitoring locations for the Inventory:

Federal and Regional Agencies

Ohio River Valley Water Sanitation Commission
U.S. Geological Survey

State Agencies

Indiana Department of Environmental Management
Indiana Department of Natural Resources

Counties

Clinton County SWCD
Dearborn County SWCD
Knox County SWCD
Marion County Health Department
Tippecanoe County Surveyor's Office
Tipton County SWCD
Wayne County SWCD

Cities and Towns

City of Elkhart Works & Utilities
Indianapolis Department of Public Works
Muncie Bureau of Water Quality

Universities

Indiana University – SPEA
Purdue University
St. Louis University, Missouri

Watershed Organizations

Clifty Creek Watershed
Eagle Creek Task Force
Save the Dunes Conservation Fund
St. Joseph River Watershed Initiative

Non-governmental Organizations

The Nature Conservancy
Wabash River Enhancement Corp.

Private Sector

Commonwealth Biomonitoring

Volunteers

Hoosier Riverwatch
Indiana Volunteer Lake Monitoring Program

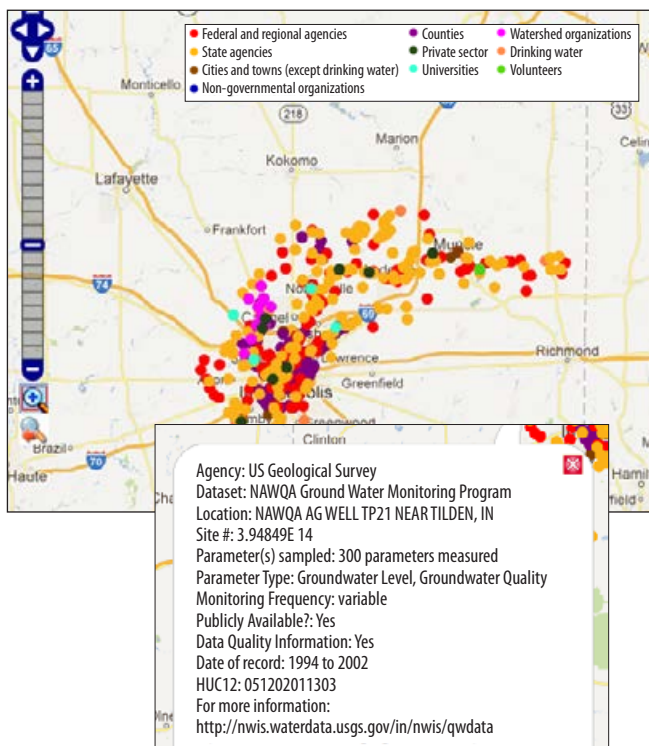
Drinking Water

Indiana American Water Co.

Location searches

There are several ways to search the Inventory for monitoring information. Users can:

- Select an organization — IDEM, for example — and find every location they monitor in Indiana.
- Enter a key word in the location name, such as “Wabash,” to locate where monitoring is being conducted by any agency.
- Search by hydrologic unit code (watershed). Enter an 8-, 10-, or 12-digit HUC to determine monitoring locations within a specific area.
- Select a parameter type, such as macroinvertebrates, to locate where specific types of monitoring are occurring.



Website management and updates

The Inventory is a collaborative effort of many members of the Indiana Water Monitoring Council, who are committed to improving water monitoring and management in Indiana. The original Inventory website was developed by the Indiana Watershed Leadership Program at Purdue University in 2007. New technology has been integrated to allow faster searches, with a new version released in 2012.

Monitoring information has been provided by many agencies and types of organizations. New datasets are added whenever they are available. The Inventory becomes a more useful tool as more organizations share data. To share monitoring data, click on the website’s “Contributing Data” link.

Contributing to better monitoring

The Inventory helps environmental managers, local watershed groups and anyone considering monitoring water in Indiana learn where water is being monitored, or has been in the past. This helps to improve water monitoring by:

- Increasing collaboration. The public learns who else is monitoring in a watershed.
- Reducing duplication of data collection, saving time and money, and making good use of limited funding.
- Continuing to provide information about sampling after funding ceases.
- Serving as a baseline for comparison for future projects.
- Providing education to the public about where data are being collected.
- Facilitating communication between local monitoring groups, landowners and governmental agencies.

Before starting any water-monitoring program, check the Inventory first to see if there are any existing monitoring locations that are helpful.

Getting involved

Your participation can make the Inventory even more useful, when you:

- Contribute monitoring information. At the Inventory website, click on “Contributing Data” for information or to discuss how to contribute data.
- Tell others about it. Bring the Inventory to the attention of your professional associations and others who have data.
- Share with others how the Inventory helps you.

Inventory Creators:

Laura Esman, Jane Frankenberger
 Indiana Watershed Leadership Program
<https://engineering.purdue.edu/watersheds/>

Apr 2013

It is the policy of the Purdue University Cooperative Extension Service that all persons have equal opportunity and access to its educational programs, services, activities, and facilities without regard to race, religion, color, sex, age, national origin or ancestry, marital status, parental status, sexual orientation, disability or status as a veteran. Purdue University is an Affirmative Action institution. This material may be available in alternative formats.