





# What is Formula SAE?

Formula SAE (FSAE) is a student design competition endorsed by the Society of Automotive Engineers. Each year, students are challenged to design, build, and race a new prototype car while following a strict set of rules. These rules encourage students to create innovative designs and gives them the ability to test their engineering skills with real world problems. There are 420 University teams from 52 countries that come together in events around the world to prove that they have what it takes to make a winning car.

In North America, the competition at Michigan International Speedway is the most popular. 120 Teams ship their cars from around the world to compete in static and dynamic events. Static events are overseen by representatives from the motorsports, automotive, aerospace and supplier industries that give their design scores and feedback to each team. The car then gets a chance to prove itself in various dynamic events like skid pad, autocross, and endurance. Together, the static and dynamic scores are used to decide a winner.

After a year, cars are ineligible to be entered in competition again. These cars are retired, and it all starts over again. This way, students get the opportunity to make iterations to their designs year after year.

Design. Build. Race.



**“The context of engineering in the real world is what makes FSAE important to me. It’s not just applying equations like in the classroom, it’s incorporating good design practices, manufacturing considerations, cost, aesthetics, and people skills.”**

**- Maria Krutikova**  
Purdue FSAE Alumni, Chief Engineer 2015 - 2016  
Design Engineer at Harley-Davidson



# Purdue Formula SAE

## Prestige

Purdue is ranked **8th in Undergraduate**, **6th in Mechanical**, and **6th in Aerospace Engineering** by the U.S. News and World Report. Purdue is also recognized as the **5th best public university** in the U.S. by the Wall Street Journal.

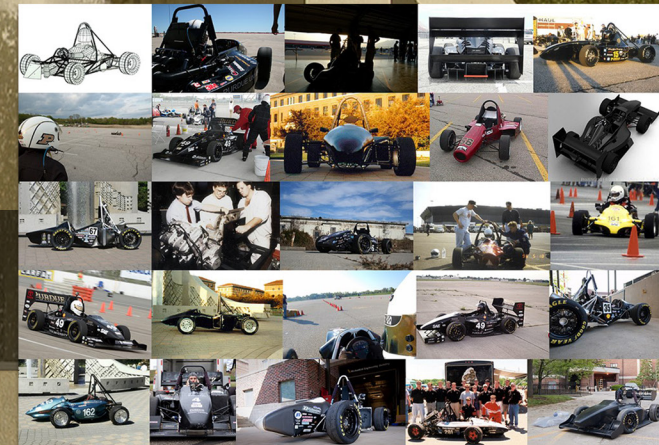
## Engineering Excellence

We apply what we learn in class to everything on the car. Access to the best CAD, CAM, and CAE software packages available to design, simulate, and manufacture parts & assemblies. We back all of this up with **real-world testing**. The result is **a stunning feat of engineering**.



## Heritage

Established in 1992, we have been racing for over 25 years. This includes a **4th place finish at FSAE Michigan in 2009**, **13th in 2014**, and **14th in 2018**.





# The 2018-19 Car: PF-19

This year we will be doing research on innovative sub-system optimizations such as a full carbon fiber monocoque and advanced electronic controls.

>150 lbs Downforce at 40 mph  
Complete Aero Package: front and rear wings, undertray, and sidepods.

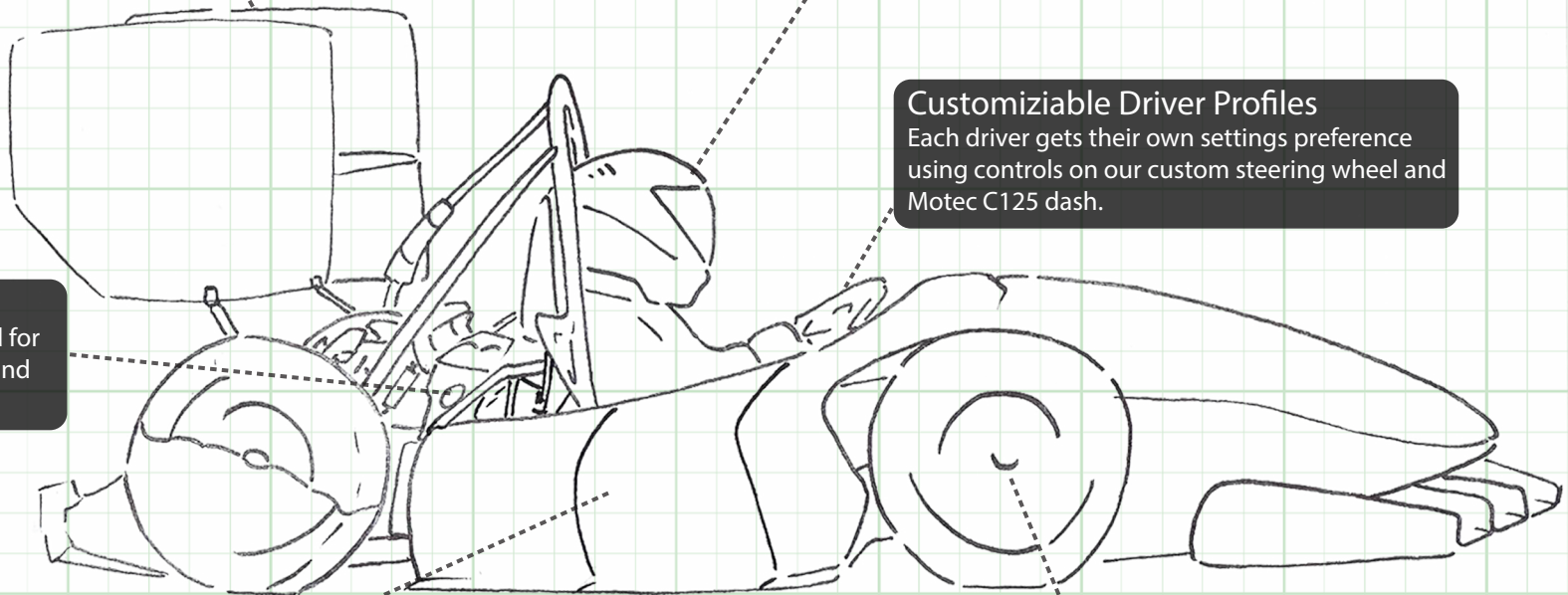
**Driver Training Program**  
Student drivers are hand-picked and put through rigorous training - both real and virtual.

**Customizable Driver Profiles**  
Each driver gets their own settings preference using controls on our custom steering wheel and Motec C125 dash.

**91 Horsepower**  
599cc Yamaha R6 engine tuned for driveability. Custom dry sump and 3D printed intake.

**Carbon Fiber Bodywork**  
Every panel on the car is made of carbon fiber and is manufactured in-house.

**1.5 Lateral G's**  
Completely student designed suspension geometry.





# Sponsorship Levels.

Get Exclusive Recruiting access for YOUR Company!

|  PURDUE<br>UNIVERSITY | Supporter<br>< \$500 | General Partner<br>\$500 - \$999 | Bronze Partner<br>\$1000 - \$2999 | Silver Partner<br>\$3000 - \$4999 | Gold Partner<br>\$5,000 - \$9,999 | Platinum Partner<br>\$10,000 + |
|--|----------------------|----------------------------------|-----------------------------------|-----------------------------------|-----------------------------------|--------------------------------|
| Website Branding   | ✓                    | ✓                                | ✓                                 | ✓                                 | ✓                                 | ✓                              |
| Logo on Car  |                      | Minor                            | Small                             | Medium                            | Large                             | Huge                           |
| Invitation to Speak at Team Meeting  |                      | ✓                                | ✓                                 | ✓                                 | ✓                                 | ✓                              |
| Shop Tour  |                      |                                  | ✓                                 | ✓                                 | ✓                                 | ✓                              |
| Logo on Team Apparel   |                      |                                  |                                   | Medium                            | Large                             | Huge                           |
| Car is Available for Partner Events  |                      |                                  |                                   |                                   |                                   | ✓                              |

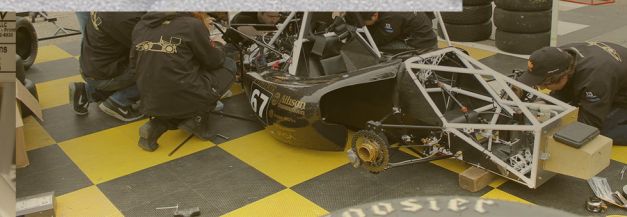
\* Alternative Branding Options are available. Logos can be put on the car, the shop, team apparel, team transportation... possibilities are endless.



# JOIN THE TEAM!



Shawn Williams  
Rocket White  
PVS8-20023





# Contact Information

2018-2019



**Benjamin Reynolds**  
President  
E: [reyno105@purdue.edu](mailto:reyno105@purdue.edu)  
T: (321) - 945- 3512

**Kiley Penn**  
Treasurer  
E: [pennk@purdue.edu](mailto:pennk@purdue.edu)  
T: (608) - 575- 1615

**Adam Christopherson**  
Chief Engineer  
E: [chris113@purdue.edu](mailto:chris113@purdue.edu)  
T: (414) - 750 - 3973

## For General Sponsorship Information:

**Connor Osborne**  
Chief Marketing Officer  
E: [osborn42@purdue.edu](mailto:osborn42@purdue.edu)  
T: (765)- 631 - 2671