




What is Formula SAE?

Formula SAE (FSAE) is a student design competition endorsed by the Society of Automotive Engineers. Each year, students are challenged to design, build, and race a new prototype car while following a strict set of rules. These rules encourage students to create innovative designs and gives them the ability to test their engineering skills with real world problems. There are 420 University teams from 52 countries that come together in events around the world to prove that they have what it takes to make a winning car.

In North America, the competition at Michigan International Speedway is the most popular. 120 Teams ship their cars from around the world to compete in static and dynamic events. Static events are overseen by representatives from the motorsports, automotive, aerospace and supplier industries that give their design scores and feedback to each team. The car then gets a chance to prove itself in various dynamic events like skid pad, autocross, and endurance. Together, the static and dynamic scores are used to decide a winner.

After a year, cars are ineligible to be entered in competition again. These cars are retired, and it all starts over again. This way, students get the opportunity to make iterations to their designs year after year.

Design. Build. Race.



“The context of engineering in the real world is what makes FSAE important to me. It’s not just applying equations like in the classroom, it’s incorporating good design practices, manufacturing considerations, cost, aesthetics, and people skills.”

- Maria Krutikova

Purdue FSAE Alumni, Chief Engineer 2015 - 2016
Design Engineer at Harley-Davidson



PURDUE
FORMULA SAE

Purdue Formula SAE

Prestige

Purdue is Ranked **8th in Undergraduate**,
8th in Mechanical,
and **6th in Aerospace Engineering**.

**BEST
COLLEGES**

U.S. News & WORLD REPORT

ENGINEERING PROGRAMS

2017

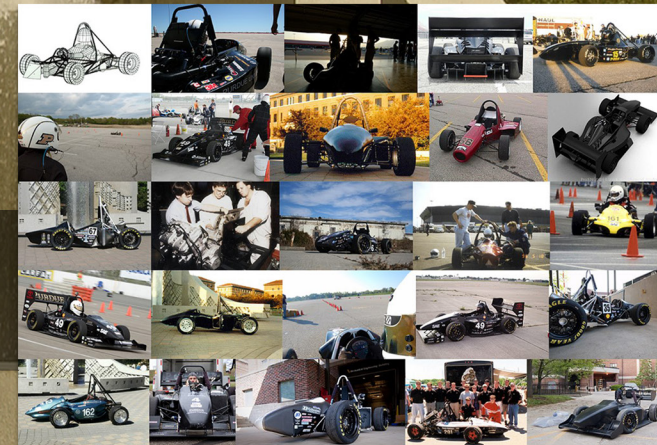
Engineering Excellence

We apply what we learn in class to everything on the car and use the best CAD, CAM, and CAE software packages available to design, simulate, and manufacture parts & assemblies. We back all of this up with **real-world testing**. The result is **stunning**.



Heritage

Established in 1992, we have been racing for over 25 years. This includes a **4th place finish at FSAE Michigan in 2009**, and **13th in 2014**.



The 2017-2018 Car: PF-18

150 lbs Downforce

Complete Aero Package: wings, undertray, and sidepods.

Downsizing the tires for 2018 will mean weight savings throughout the entire suspension. Deadlines are early to prepare for the risks of change.

Driver Training Program

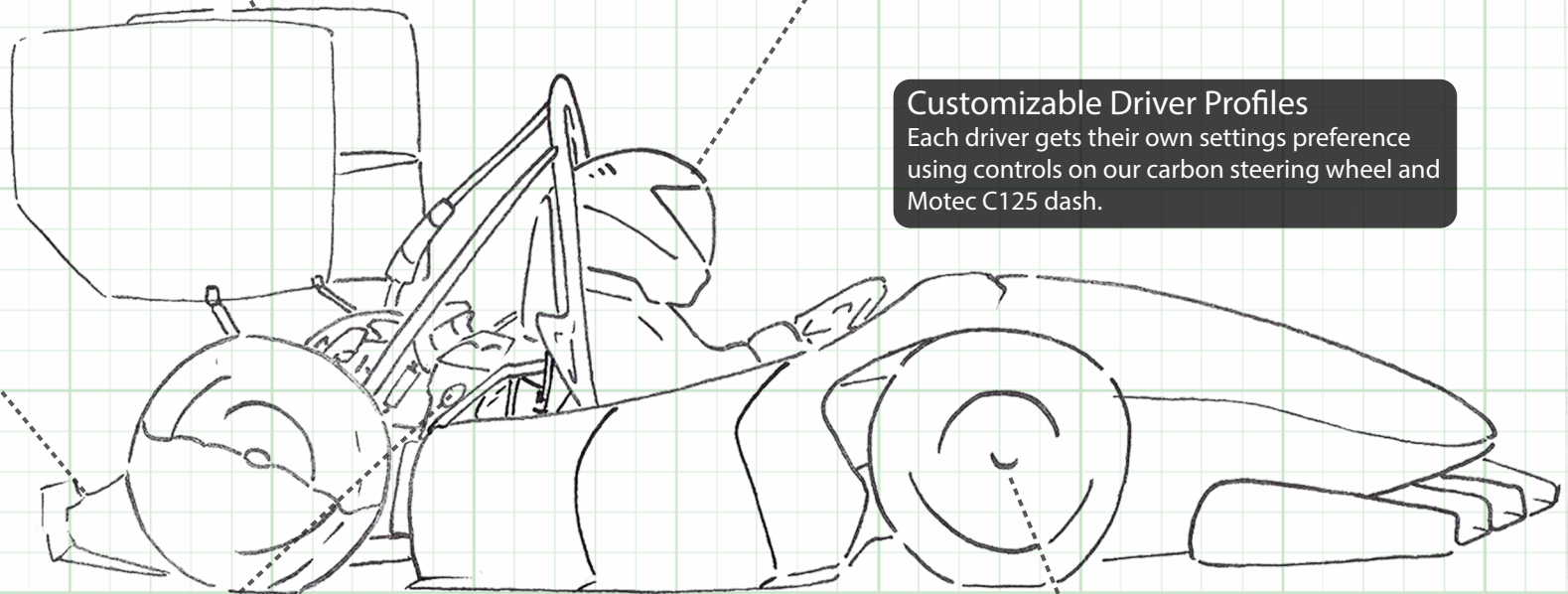
Student drivers are hand-picked and put through rigorous training - real and virtual .

Customizable Driver Profiles

Each driver gets their own settings preference using controls on our carbon steering wheel and Motec C125 dash.

Carbon Fiber Body-work

Every panel on the car is made of carbon fiber and is manufactured in-house.



91 hp


599cc Yamaha R6 engine tuned for driveability. Custom dry sump and 3D printed intake.

1.5 Lateral G's

Completely student designed suspension Geometry.

Sponsorship Levels.

Get Exclusive Recruiting access for YOUR Company!

 Supporter < \$500	General Partner \$500 - \$999	Bronze Partner \$1000 - \$2999	Silver Partner \$3000 - \$4999	Gold Partner \$5,000 - \$9,999	Platinum Partner \$10,000 +	
Website Branding	✓	✓	✓	✓	✓	✓
Logo on Car		Minor	Small	Medium	Large	Huge
Invitation to Speak at Team Meeting		✓	✓	✓	✓	✓
Shop Tour		✓	✓	✓	✓	✓
Logo on Team Apparel				Medium	Large	Huge
Car is Available for Partner Events						✓

* Alternative Branding Options are available. Logos can be put on the car, the shop, team apparel, team transportation... possibilities are endless.

JOIN THE TEAM!



Contact Information

2017-2018



David Dode
Chief Engineer
ddode@purdue.edu

Phoebe Whitmore
Treasurer
pwhitmor@purdue.edu

For General Sponsorship Information:

Brad Sikorski
President
bsikorsk@purdue.edu