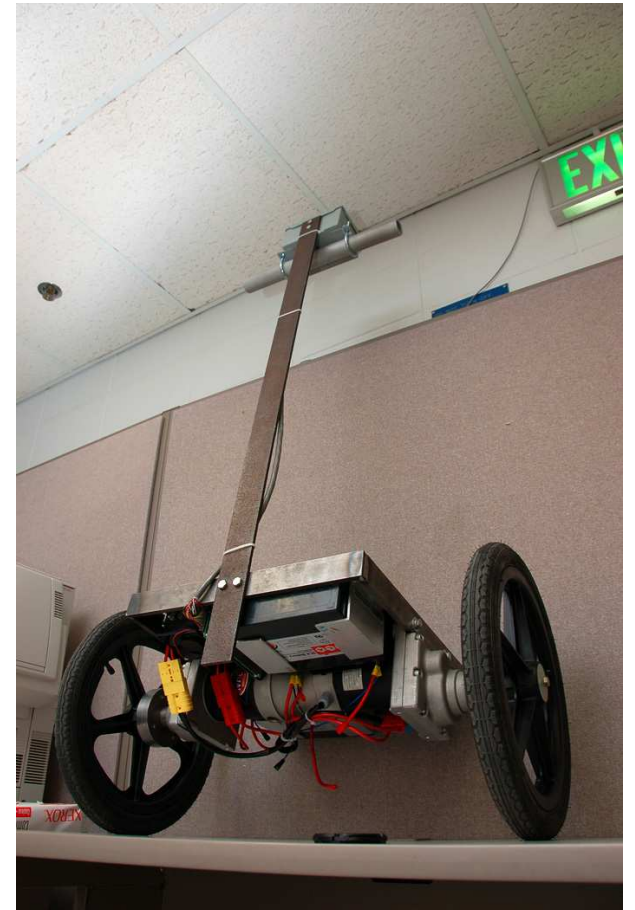


ECE 477 Senior Design Group 12 – Spring 2008



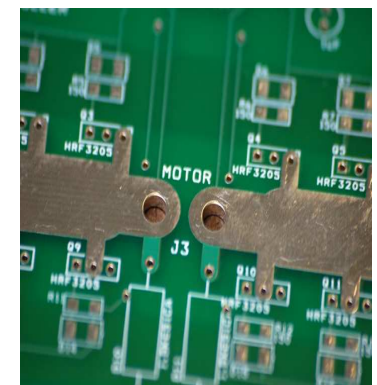
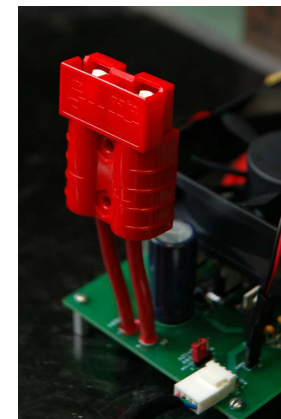
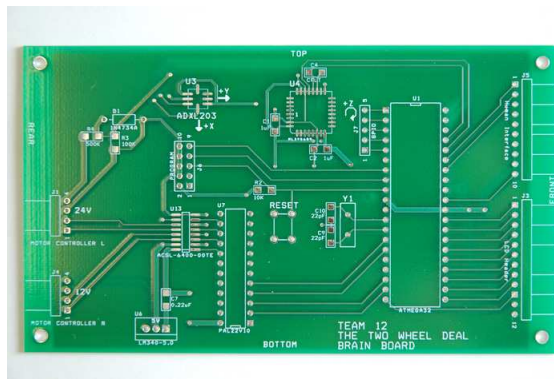
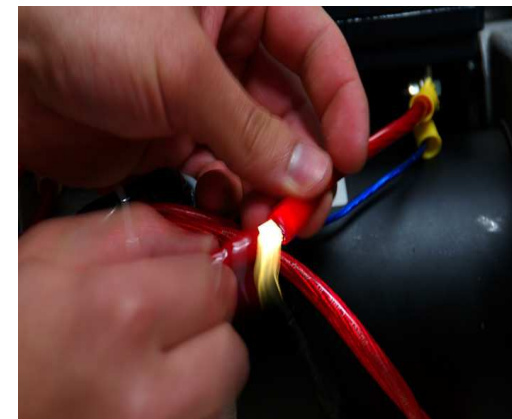
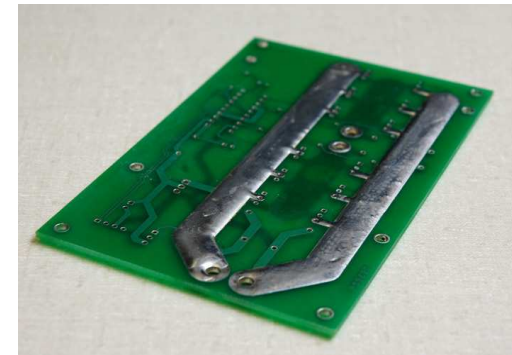
THE TWO WHEEL DEAL

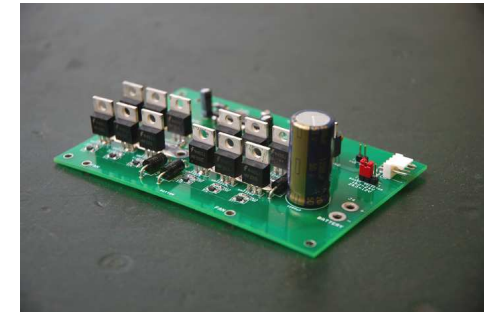
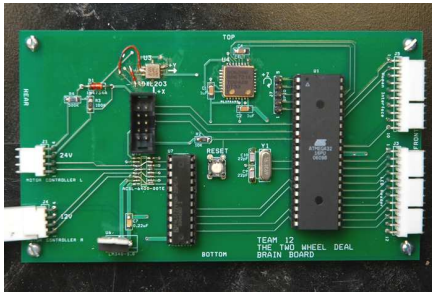
- A compact, two wheeled, self-balancing vehicle, similar to the commercial Segway.
- Serves as an alternative to strenuous activities such as driving, biking, walking, or standing.



Design Challenges Faced

- Balancing an unstable system
- Powering high current motors
- PCB Design
- Learning how to use a new microcontroller (Atmel)
- Chassis design





Project Demo

