

RFID Xpr3ss

Technical Communication Skills Practicum
February 22, 2006

The J Team

Jennifer Tietz

Jared Suttles

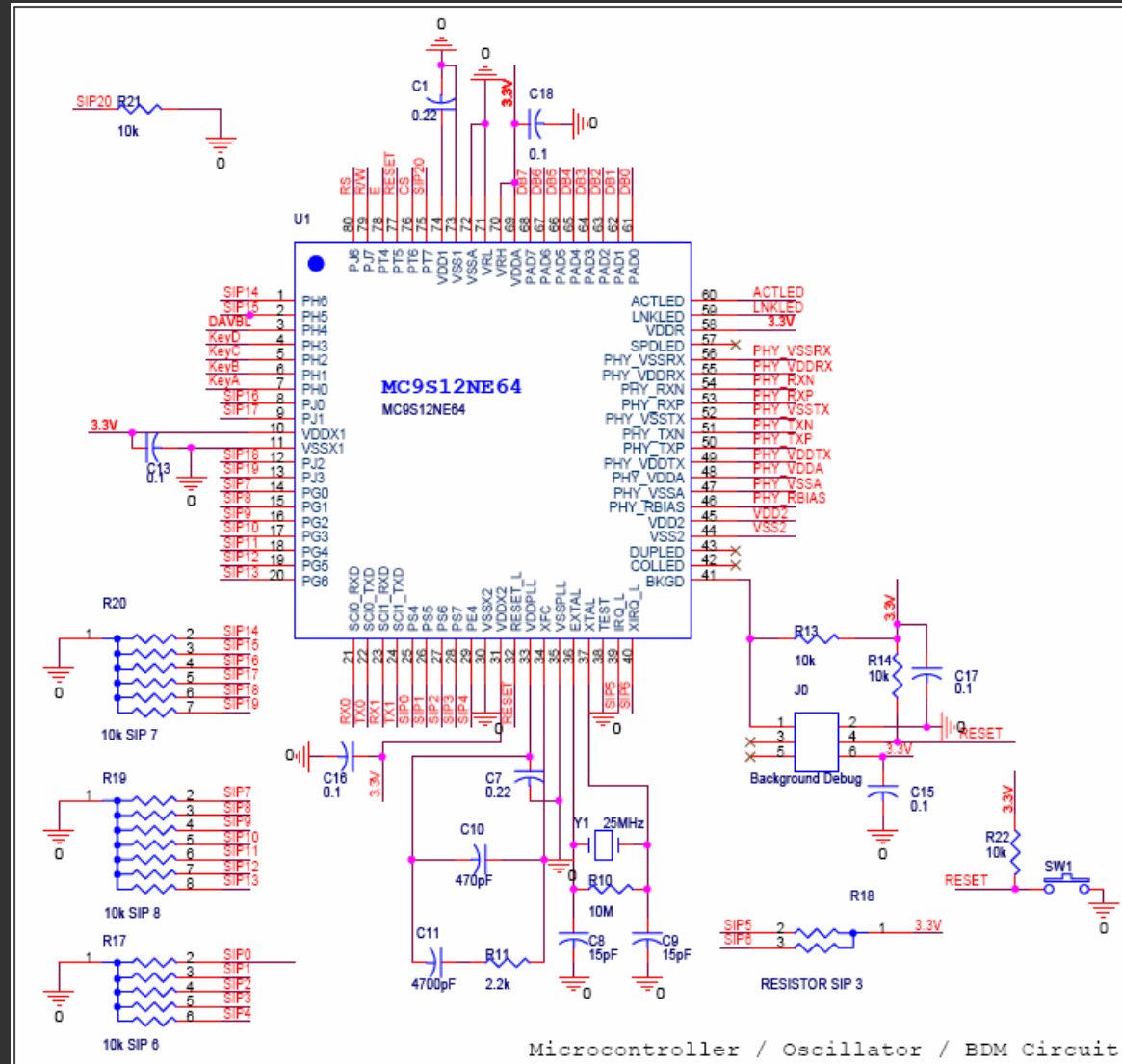
Joshua Chapman

Jonathan Chen

Schematic

RFID Xpr3ss

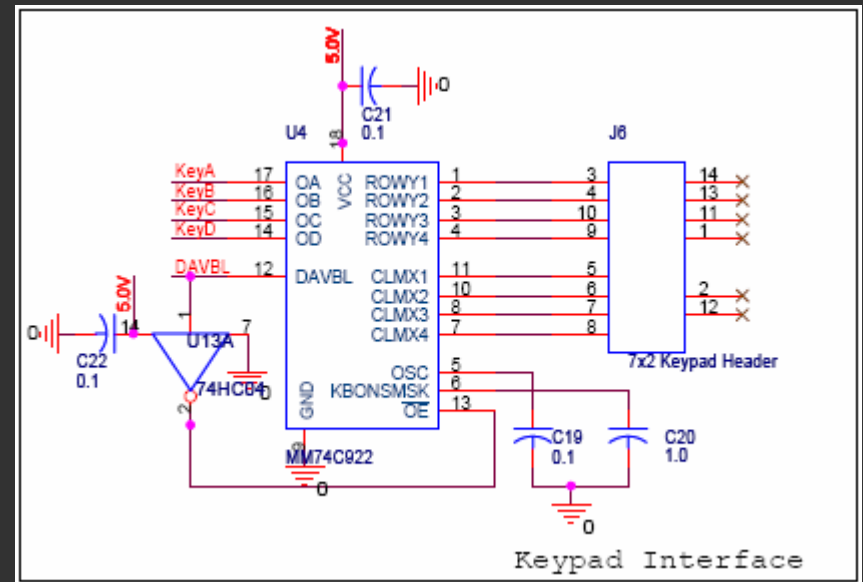
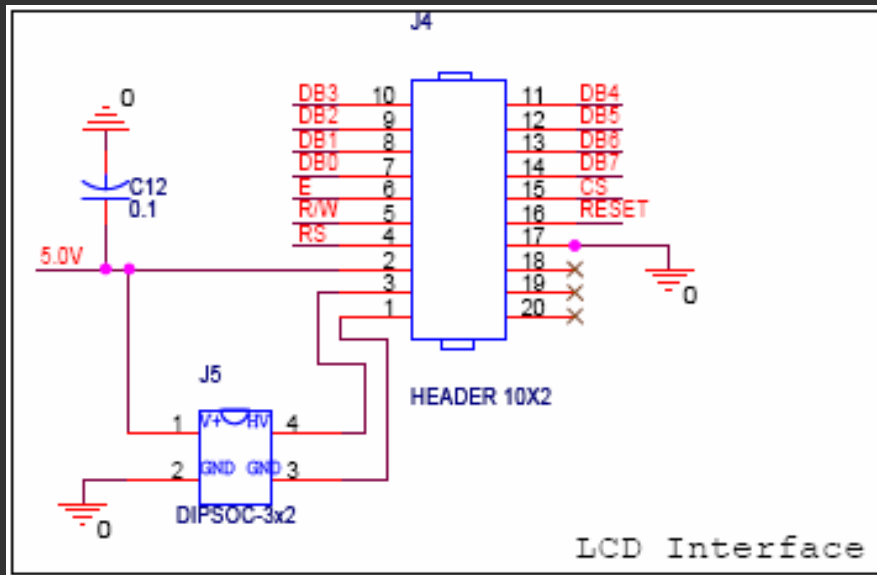
µC Block



Schematic

RFID Xpr3ss

LCD Block

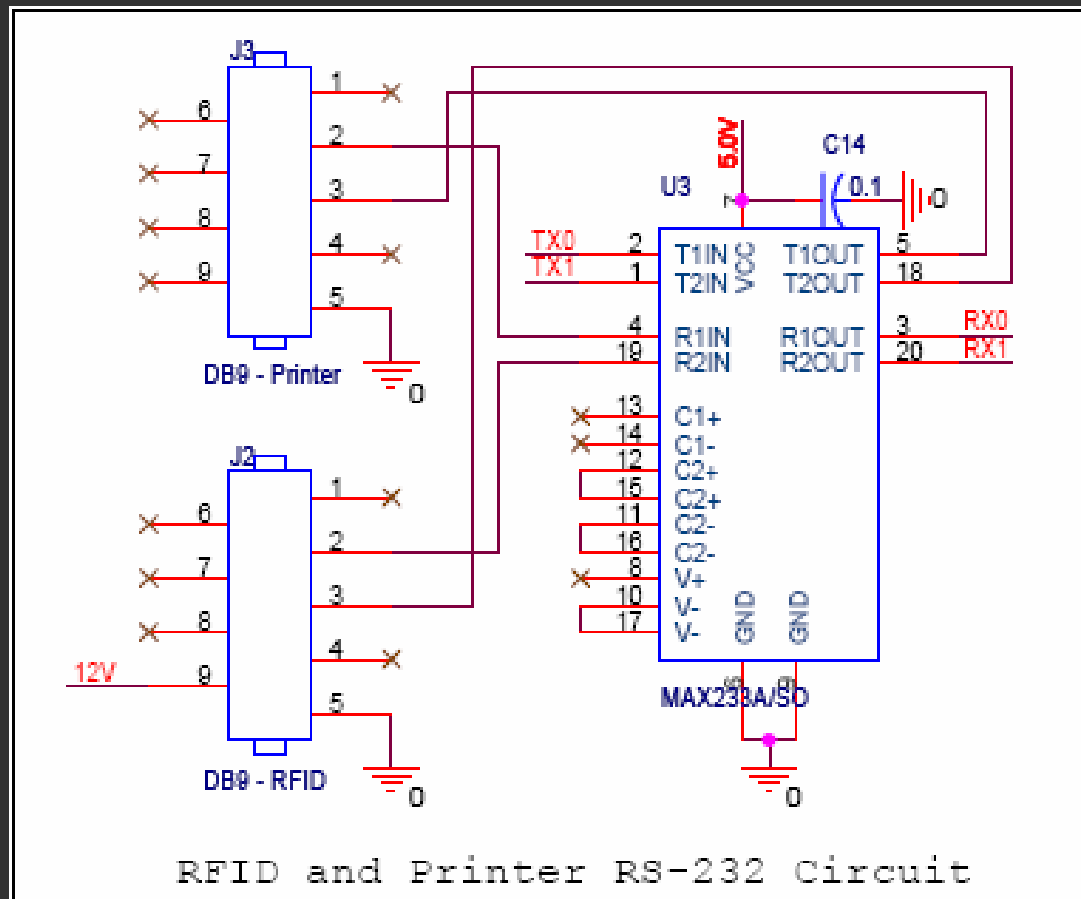


Keypad Block

Schematic

RFID Xpr3ss

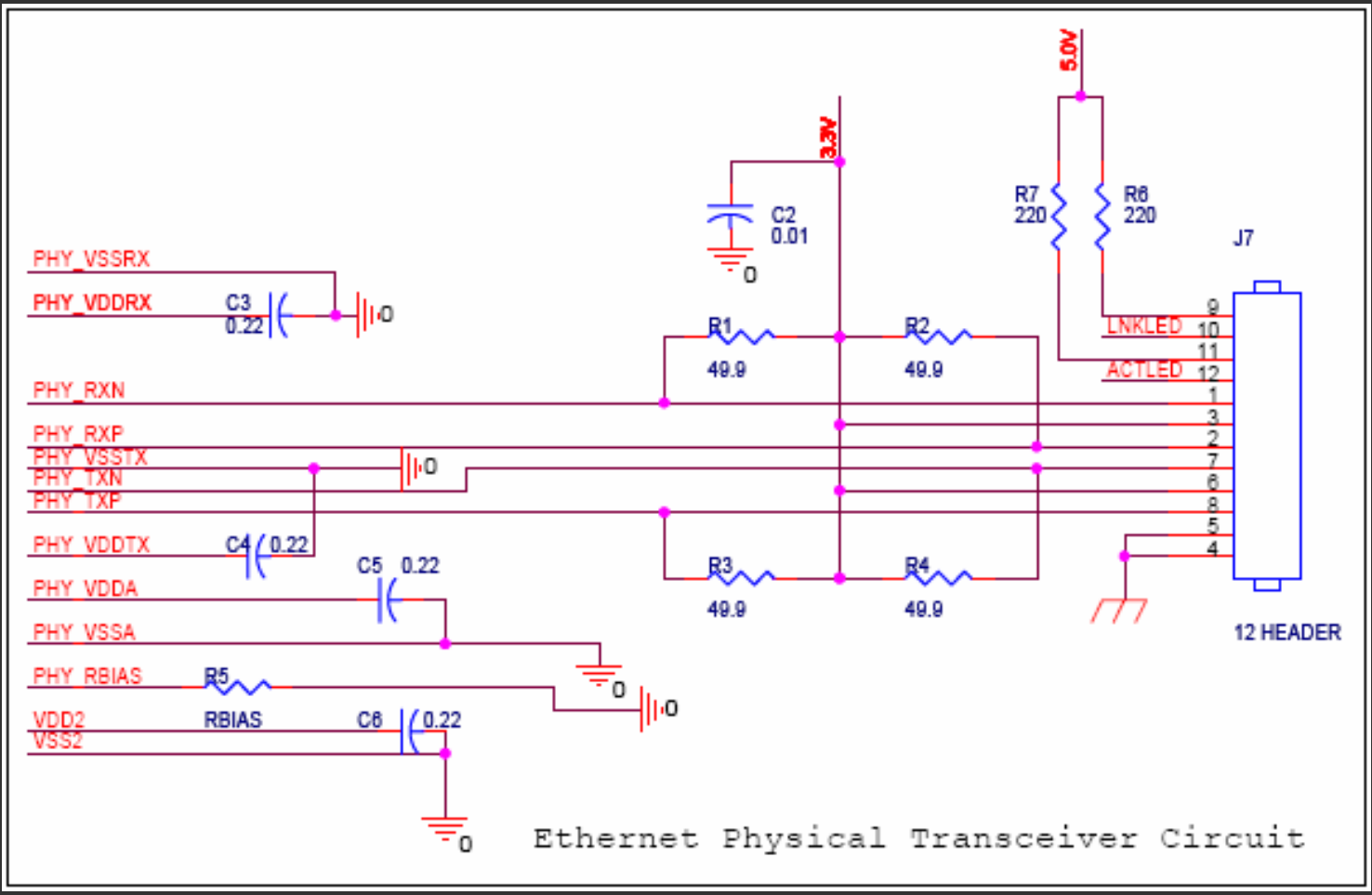
RS232 Communication Block (RFID / Printer)



Schematic

RFID Xpr3ss

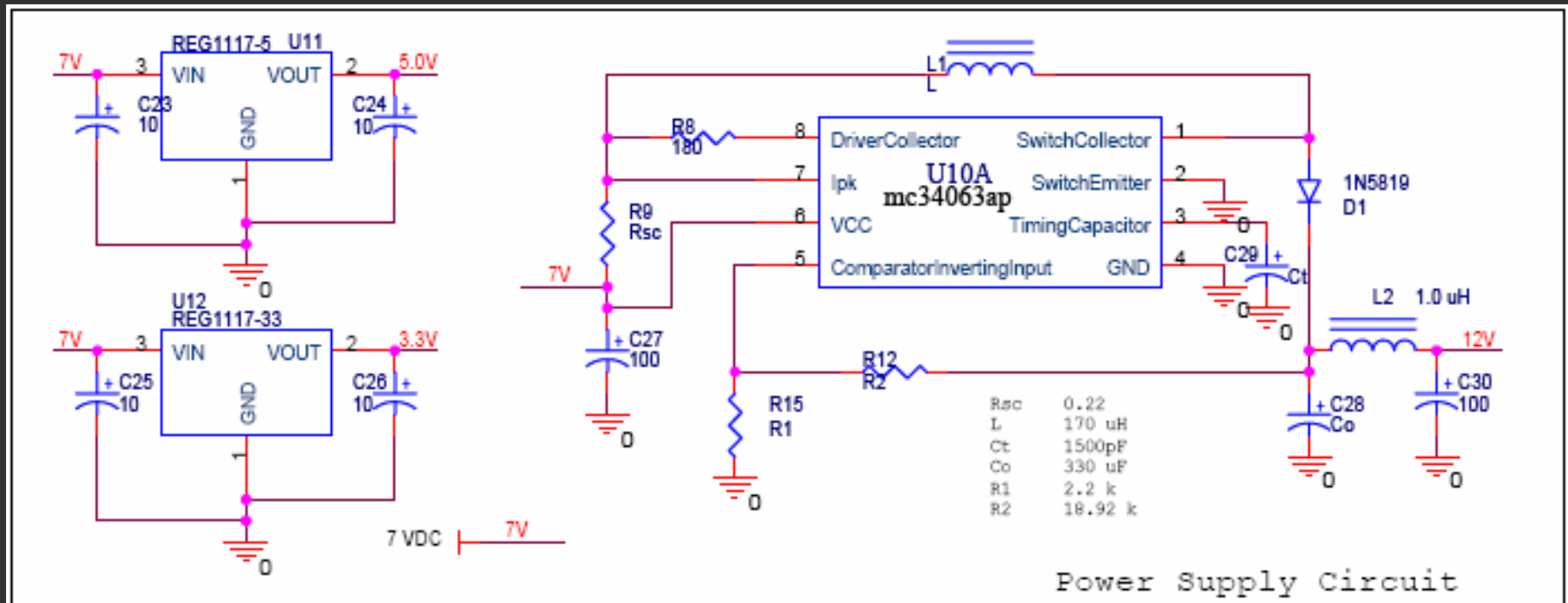
EPHY (Ethernet) Block



Schematic

RFID Xpr3ss

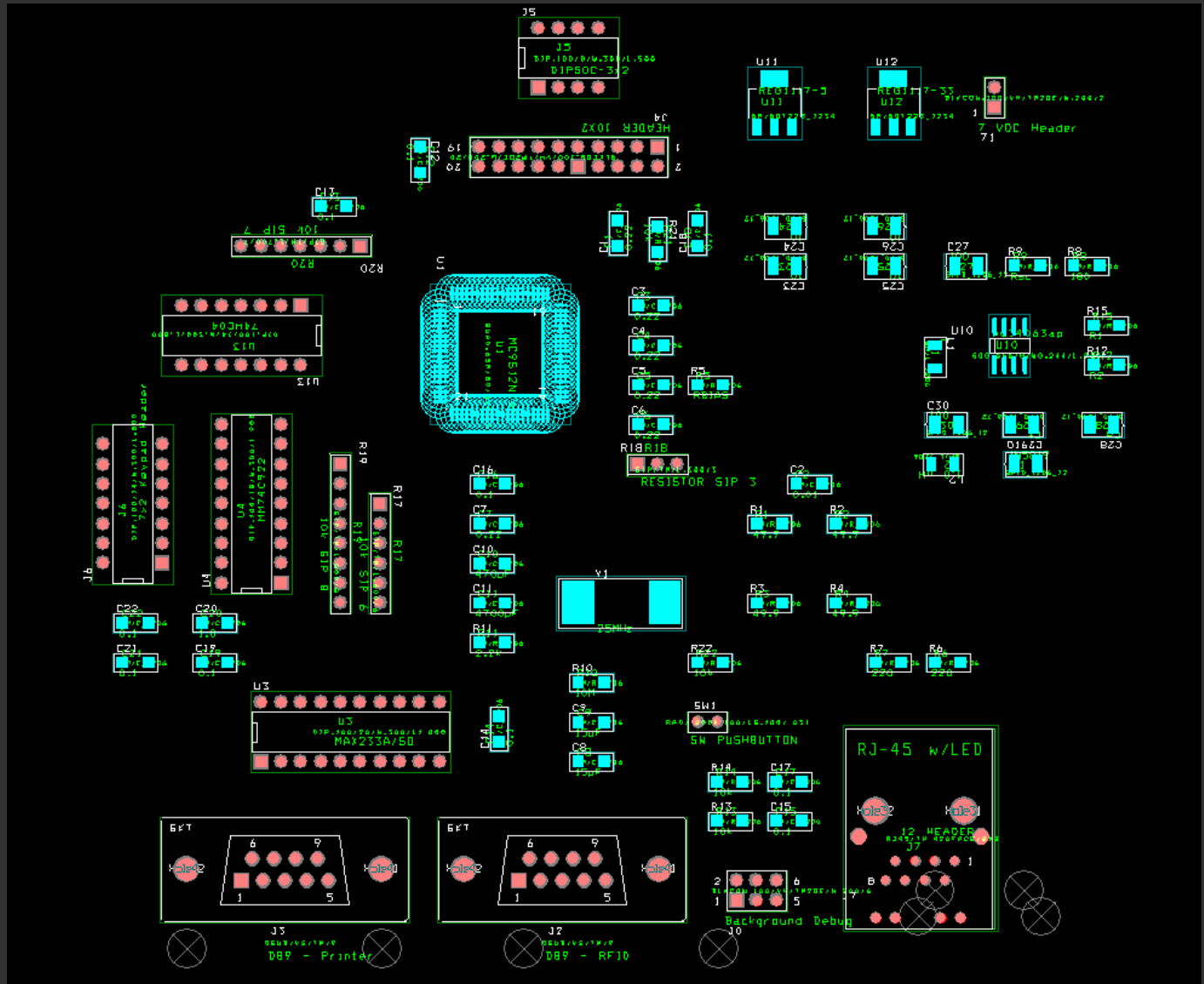
Power Supply Block



PCB Layout

RFID Xpr3ss

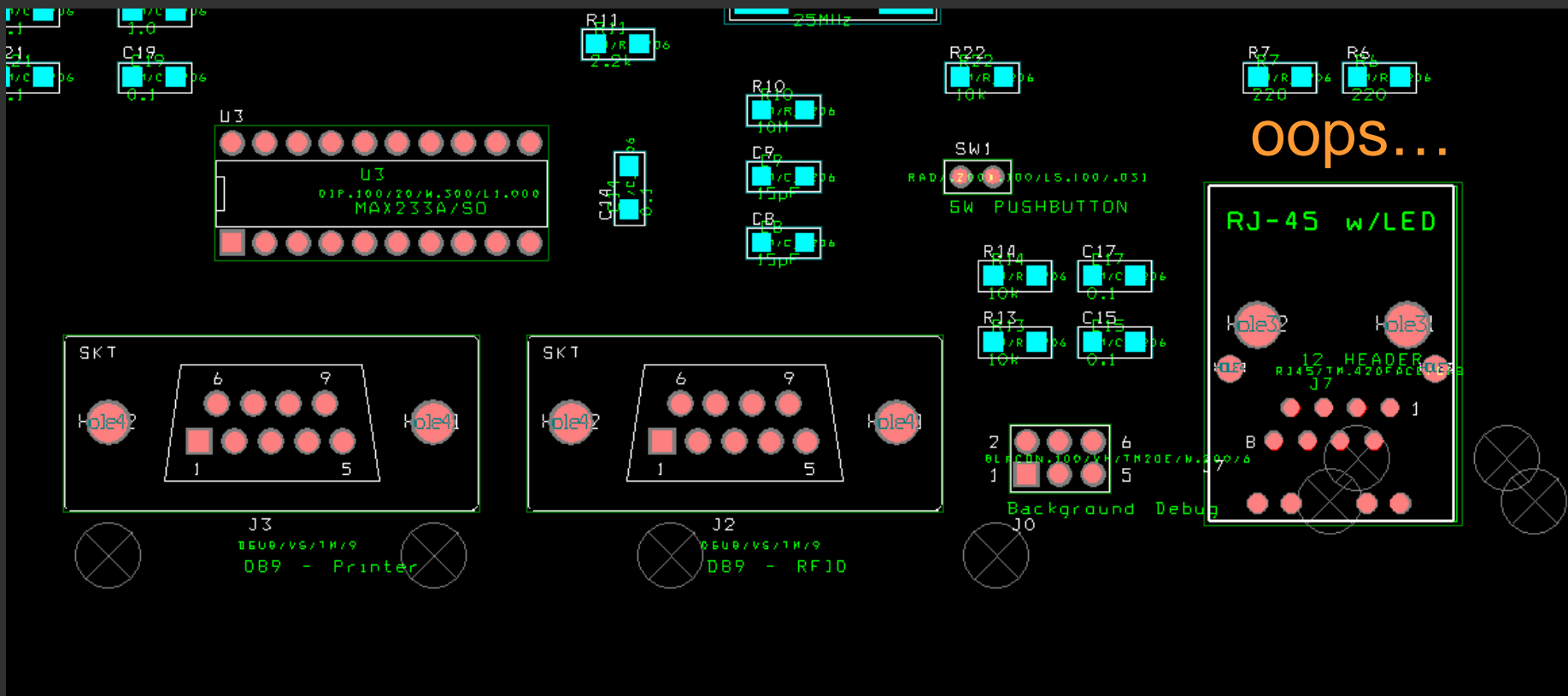
Overall PCB



PCB Layout

RFID Xpr3ss

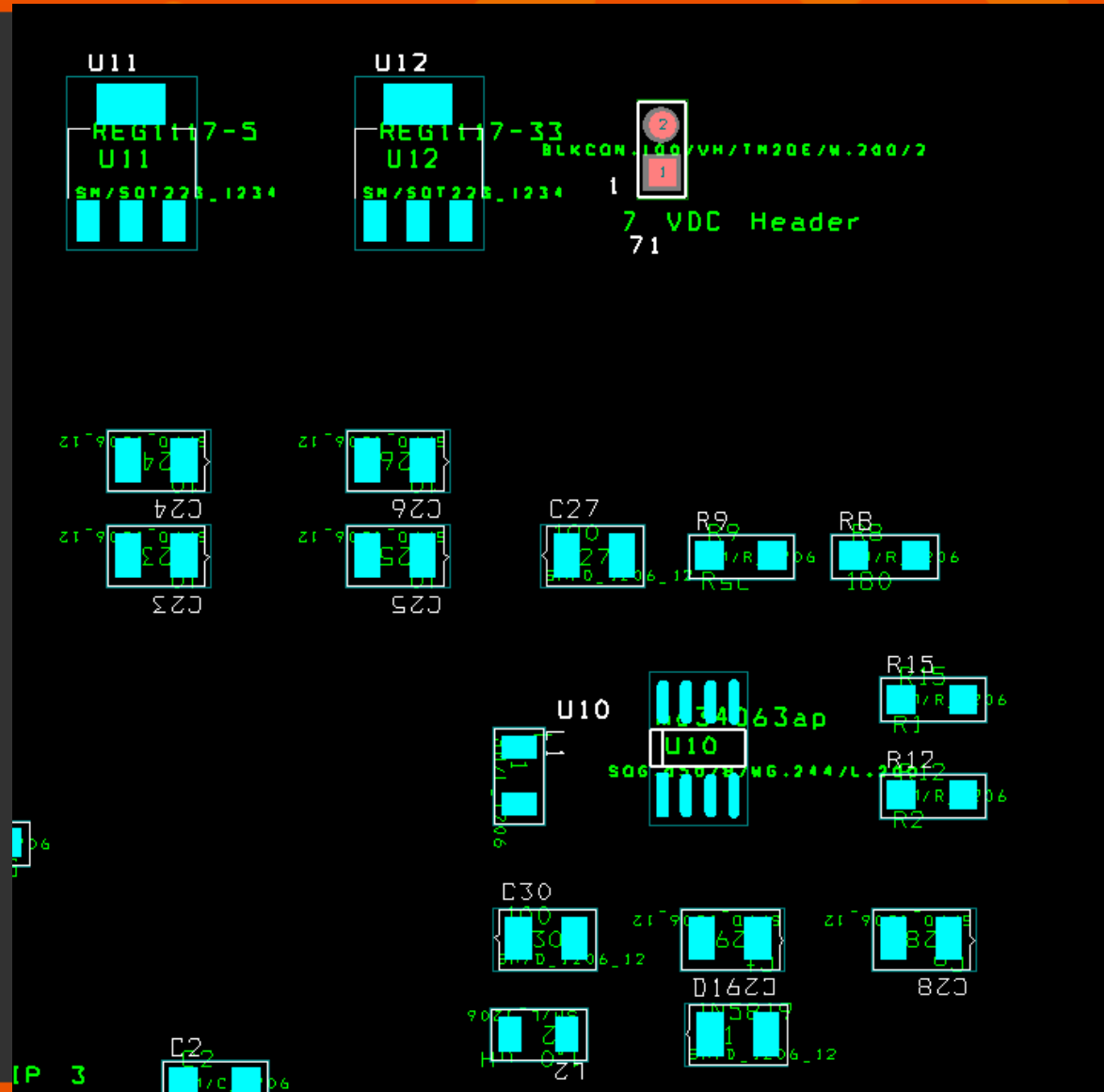
Interfaces



PCB Layout

RFID Xpr3ss

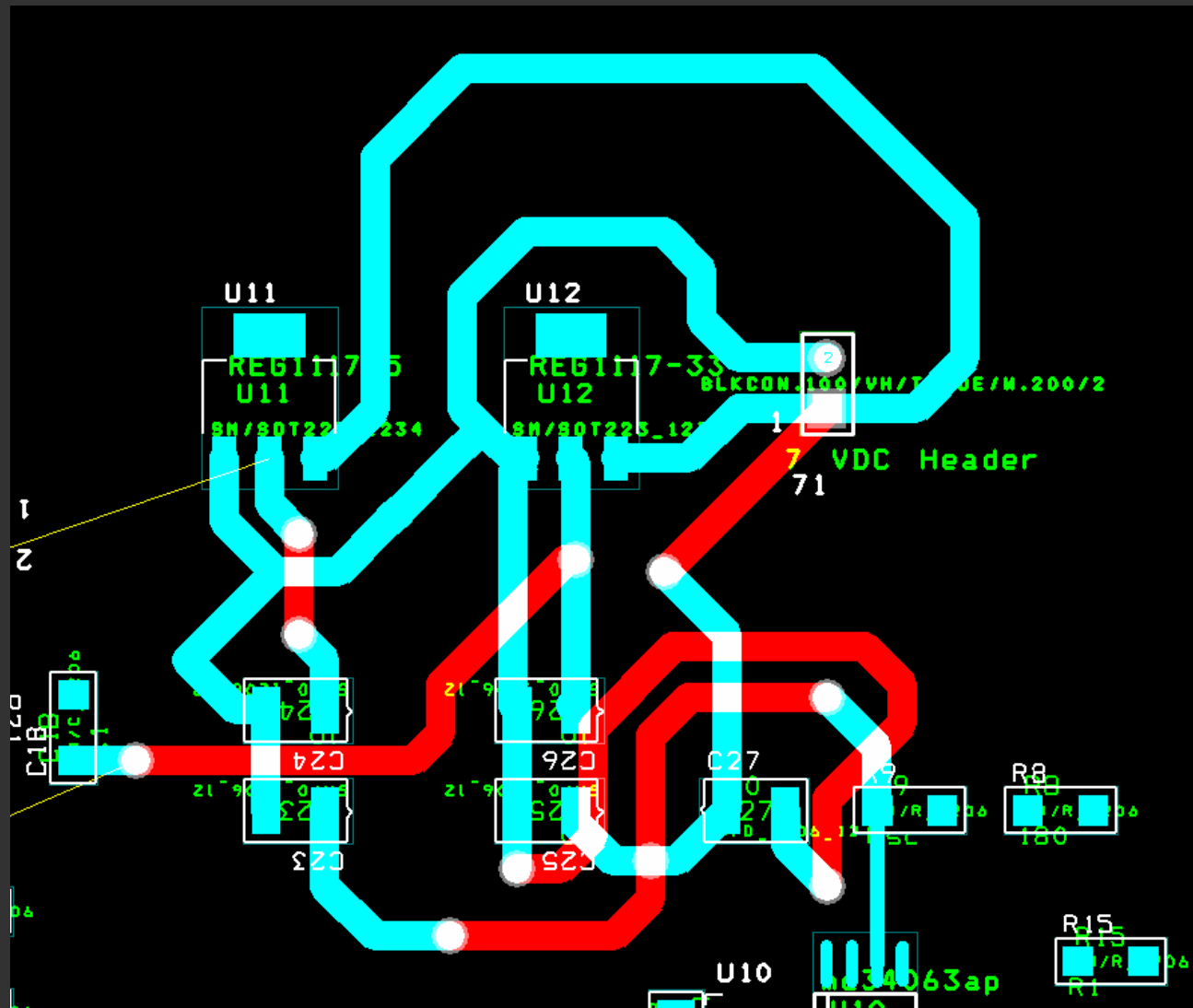
Power Supply



PCB Layout

RFID Xpr3ss

Traces...



Design Considerations

RFID Xpr3ss

- Schematic – block placement
 - strategic arrangement of RS232, ethernet, etc. blocks
- Schematic – RFID power supply
 - provide 12V through unused DB9 pins
- PCB – magnetics placement
 - detailed in 9S12NE64 documentation
 - placed within 1 inch of RJ45 jack
- PCB – crystal circuit placement
 - placed as near to the microcontroller as possible
 - grounded to the nearest part's ground
 - minimum traces to reduce noise, potential interference, and signal irregularities