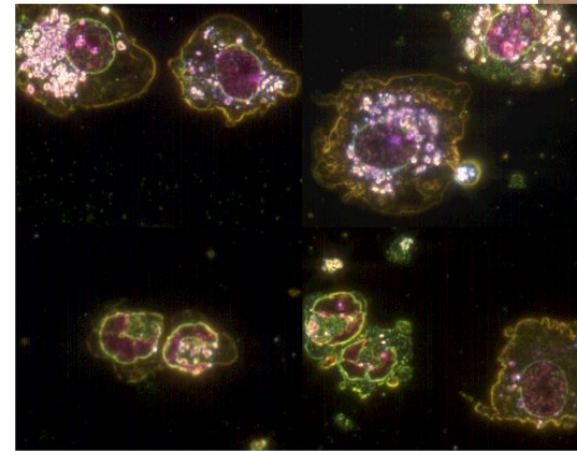


Mechanisms of susceptibility to nanoparticle-induced toxicity due to underlying disease states

Individuals suffering from chronic diseases are increasingly sensitive to environmental exposures demonstrating exacerbated toxicity and inflammation. Mechanisms responsible for this susceptibility are poorly understood and impair the development of therapeutic strategies and establishment of appropriate exposure regulations. We hypothesize the susceptibility observed in individuals suffering from cardiovascular and metabolic diseases following nanoparticle exposure is mediated via alterations in initial nanoparticle-biomolecule interactions and disease-associated impairment of inflammatory resolution.



Featuring Dr. Jonathan H. Shannahan, Health Sciences

Research Spotlight Series:
Wednesday 4/7 @ 9:30am [here](#) on Zoom



Purdue Institute of Inflammation,
Immunology and Infectious Disease