



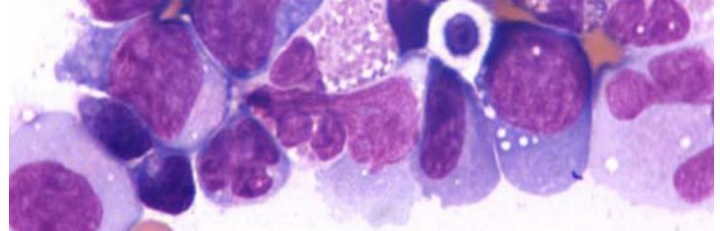
The Center for Comparative Translational Research has Purdue and CTSI core facilities for animal pre-clinical and clinical studies, for histology and image digitization, and for pharmacodynamics studies. These core laboratories can help you with your work on diseases, drugs, biologics and medical devices.



PRE-CLINICAL RESEARCH – INDUCED DISEASE MODELS

The staff of the Pre-Clinical Research Laboratory can assist you with all stages of your pre-clinical animal studies: experimental design, grant application, budgeting, PACUC application and study execution (technical and surgery support, facilities, equipment). We have experience with species ranging from mice through pigs and sheep. We can help you identify possible consultants or collaborators for your animal study. For more information on this Purdue and CTSI fee-for-service core laboratory, please contact:

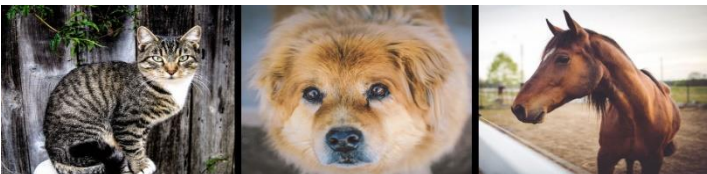
Pre-Clinical Research Laboratory
Robyn McCain, manager
765-496-2504 | PreClinical@purdue.edu
Lynn Hall Rm 1243
<http://vet.purdue.edu/ctr/pre-clinical/>



HISTOLOGY AND DIGITAL IMAGING

The Histology Research Laboratory is a full service histology laboratory that provides tissue embedding (paraffin, plastic, OCT medium), slide preparation (microtome, cryostat, EXAKT grinding), special stains, immunohistochemistry, and immunofluorescence. The Histology Research Laboratory offers digitization of histological slides (HistolImage) using the Leica Aperio system. Technical consultation as well as pathology consultation and collaboration is available. This facility is a Purdue and CTSI recharge core facility.

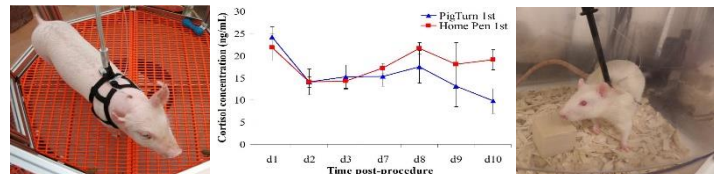
Histology Research Laboratory
Victor Bernal-Crespo, manager
765-494-7548 | Histology@purdue.edu
Veterinary Pathobiology Research Building (VPRB) Rm B15
<http://vet.purdue.edu/ctr/histology/>



CLINICAL RESEARCH – SPONTANEOUS DISEASE MODELS

The Veterinary Clinical Trials support service helps researchers to conduct clinical studies (including clinical trials) in the College of Veterinary Medicine's Teaching Hospital. We can assist you with identifying clinician-collaborators for your study, consult with you on your study design, and help with recruitment enrollment, data collection and data analysis. The Veterinary Clinical Trials support service works on a fee-for service basis and is a Purdue and CTSI core facility.

Veterinary Clinical Trials
Becky Bierman, trial coordinator
765-496-9715 | VeterinaryClinicalTrials@purdue.edu
Lynn Hall Rm G124
<http://vet.purdue.edu/clinicaltrials/>



PURDUE TRANSLATIONAL PHARMACOLOGY

The Purdue Translational Pharmacology Laboratory is a joint Bindley Bioscience Center - College of Veterinary Medicine facility and a Purdue and CTSI recharge core facility. The unique instrumentation in the facility offers multiple options for collection of bio fluids, with precise sampling intervals ranging from 2 minutes to days. Collection is automated, from undisturbed, freely moving animals, reducing stress. Studies performed in the facility include ADME, pharmacokinetic evaluation of drug candidates, bioavailability and toxicology studies. Studies can be conducted in both porcine and rodent models.

Purdue Translational Pharmacology Laboratory
Robyn McCain, manager
765-496-2504 | rmccain@purdue.edu
Lynn Hall Rm 1243
<https://www.purdue.edu/discoverypark/bioscience/facilities/core/pharmacology/index.php>