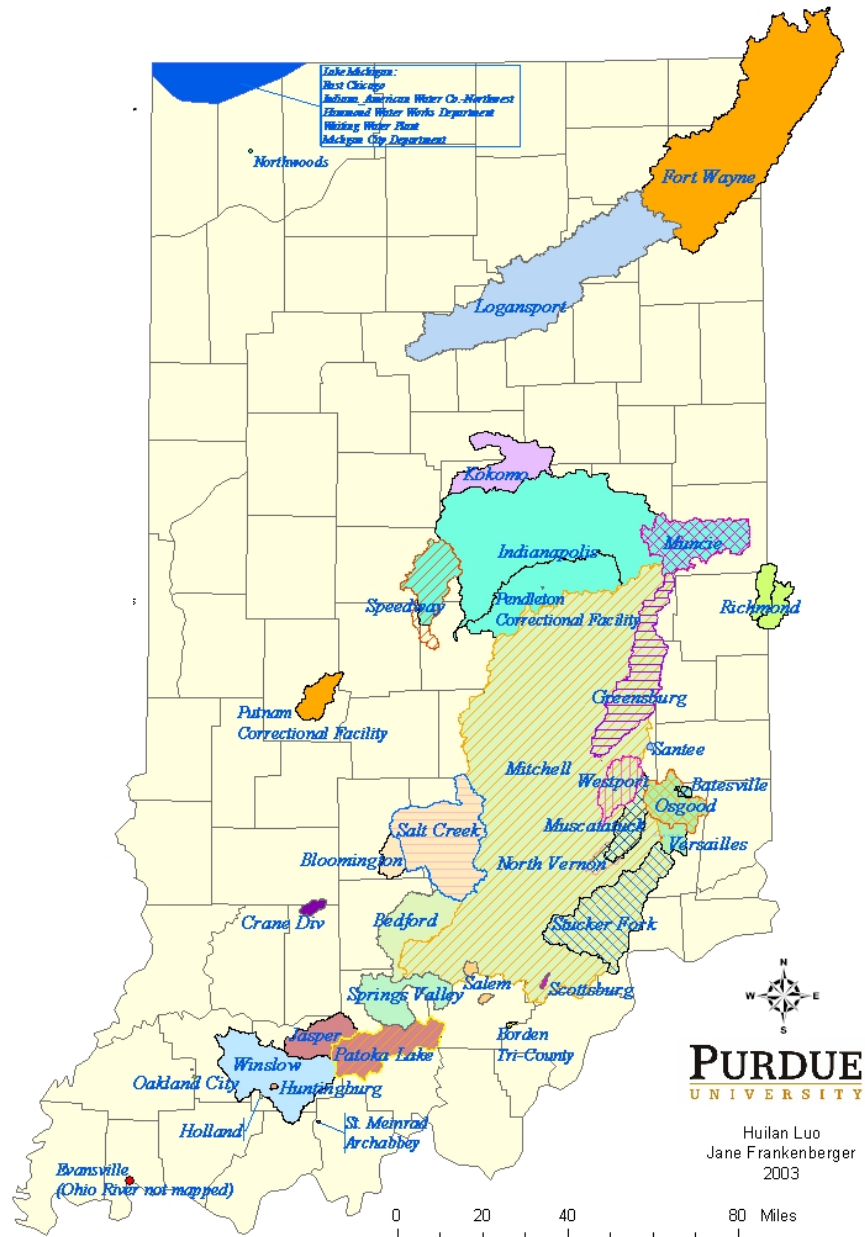


County Maps of Water Supply Watersheds in Indiana



Jane Frankenberger
 Department of Agricultural and Biological Engineering
 Purdue University
 with GIS assistance from Huilan Luo and Oguz Gungor

TABLE OF CONTENTS

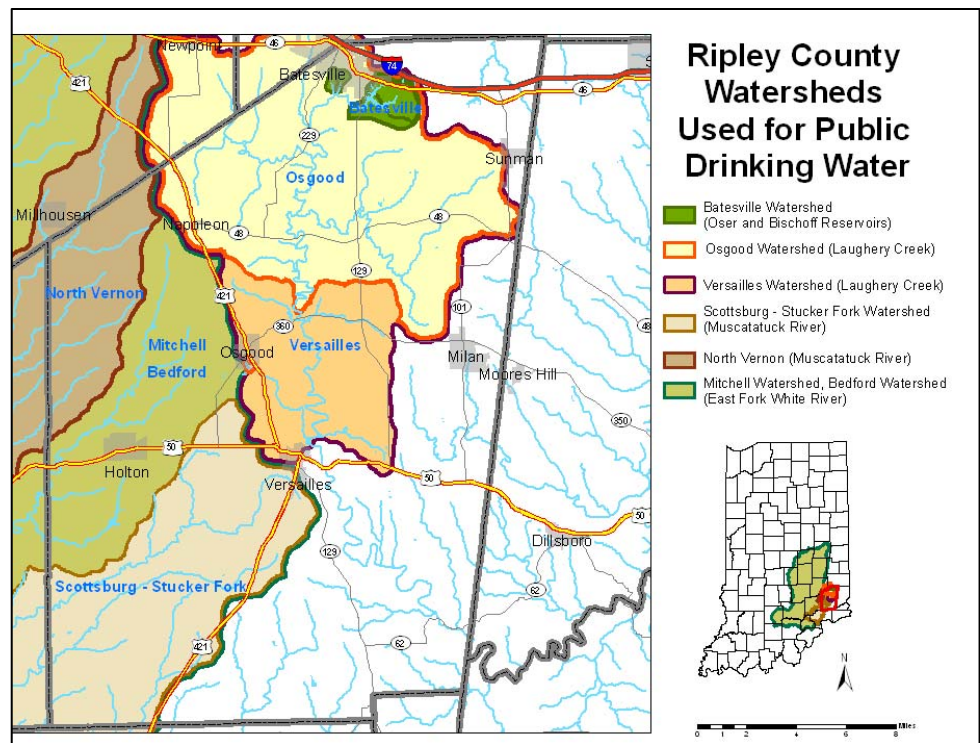
Allen County..... 3
Bartholomew County..... 3
Boone County..... 4
Brown County 4
Cass County..... 5
Clark County 5
Clinton County..... 6
Crawford County..... 6
De Kalb County..... 7
Dearborn County 7
Decatur County 8
Delaware County 8
Dubois County 9
Fayette County..... 9
Franklin County 10
Fulton County 10
Gibson County 11
Grant County..... 11
Greene County..... 12
Hamilton County 12
Hancock County..... 13
Henry County 13
Howard County..... 14
Huntington County 14
Jackson County..... 15
Jefferson County..... 15
Jennings County 16
Johnson County..... 16
Kosciusko County..... 17
Lawrence County 17
Marion County 18
Martin County..... 18
Miami County 19
Monroe County 19
Noble County 20
Orange County 20
Perry County 21
Pike County..... 21
Randolph County 22
Ripley County..... 22
Rush County..... 23
Scott County..... 23
Shelby County 24
Spencer County 24
Steuben County 25
Tipton County..... 25
Wabash County 26
Washington County..... 26
Wayne County 27
Whitley County 27

About these maps

Each county map shows the watersheds located within the county for all public water supply systems that provide drinking water from surface water sources (streams, rivers, or reservoirs). Watersheds for public water systems are important because activities or chemicals applied within them have the potential to impact drinking water quality.

Watersheds can be large or small, ranging from less than 2 square miles in areas to more than 5000 square miles. Watersheds for Lake Michigan (source water for Hammond, Lowell, Whiting, East Chicago, Indiana-American Northwest, and Michigan City) and the Ohio River (source water for Evansville) are so large that they are not included on these maps.

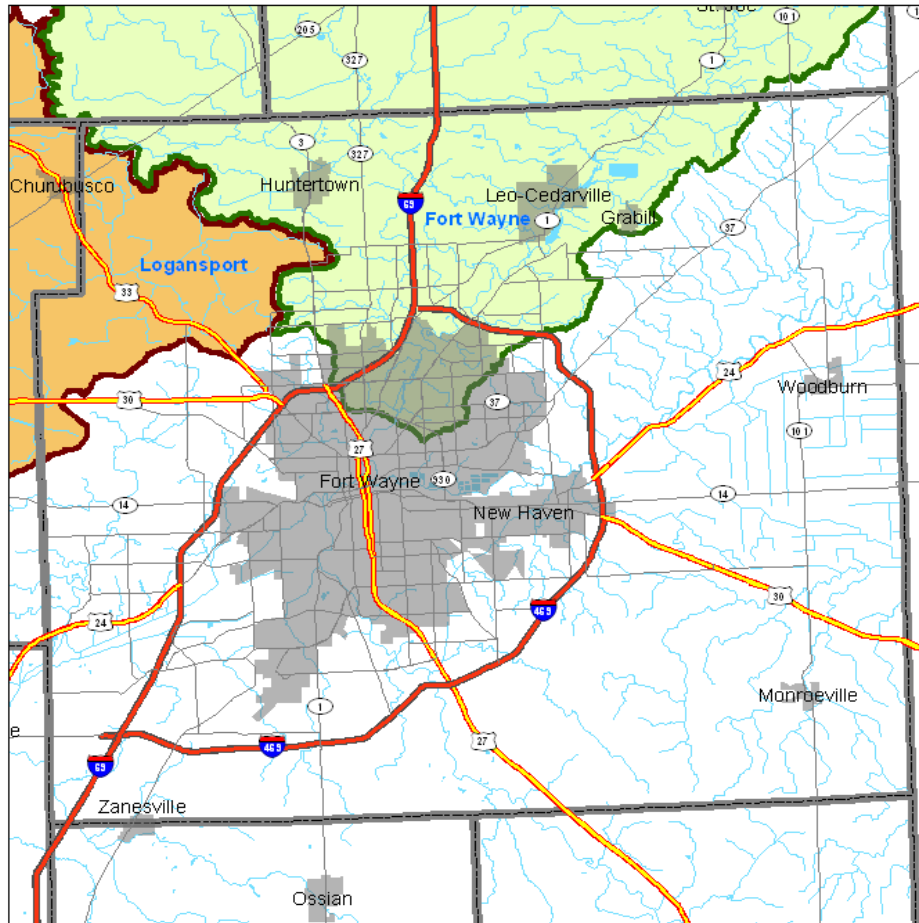
A county may include watersheds for communities that are not located within the county. In the map of Ripley County shown at right, drinking water supply watersheds are shown for Batesville, Osgood, and Versailles which are in the county, and also for North Vernon, Mitchell, Bedford, and Scottsburg which are located some distance from Ripley County. Activities in Ripley County can affect communities tens or hundreds of miles downstream. The smaller inset map of Indiana shows the entire watershed for more perspective.



Watersheds are often nested within other watersheds, since one water system may draw water upstream from another on the same stream or river. In those cases multiple outlines show the relationship between watersheds. For example, in Ripley County both Osgood and Versailles use Laughery Creek, with Osgood's water intake upstream from Versailles. Therefore the watershed for Versailles (plum outline) encompasses the entire Osgood (orange outline) watershed, plus an additional downstream area. Batesville (green outline) draws water from smaller reservoirs that are also within the Laughery Creek watershed, and its watershed is fully contained by both Osgood and Versailles. Therefore, the outline for Versailles extends all the way around the Osgood and Batesville watersheds as well. Also, North Vernon and Scottsburg-Stucker Fork watersheds lie completely within the watershed for Mitchell and Bedford, which is shown with the dark green line extending around these watersheds.

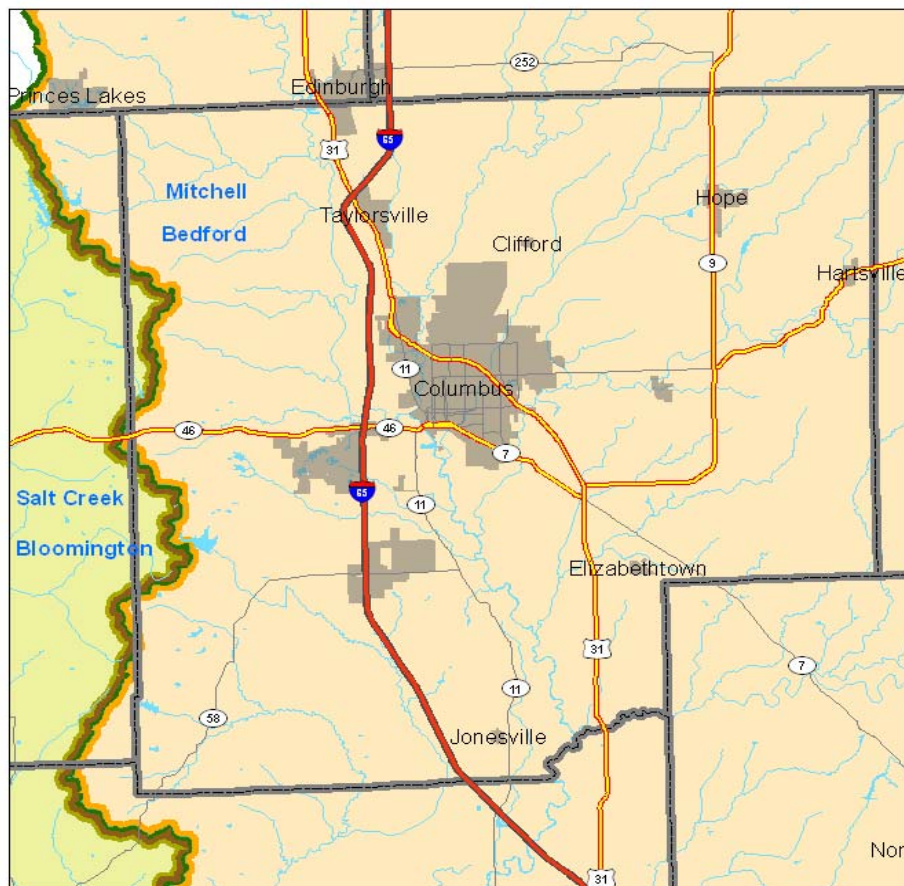
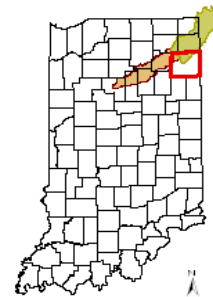
Watershed names are shown on all maps in blue, while the names of communities are in black. County boundaries, rivers, and highways are shown for reference.

The maps were produced with funding from Region 5 EPA under a grant to the Office of the Indiana State Chemist. More information is available at <http://www.ecn.purdue.edu/SafeWater/Maps>.



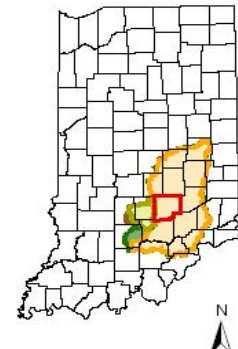
Allen County Watersheds Used for Public Drinking Water

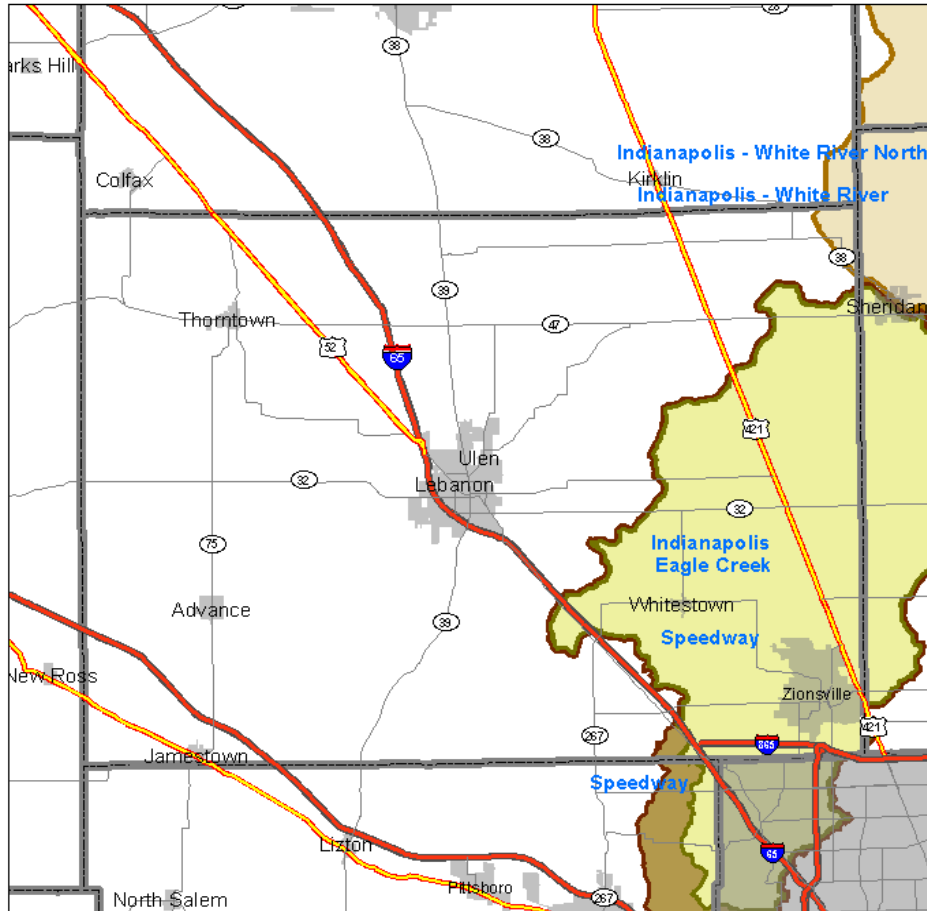
- Fort Wayne (St. Joseph River)
- Logansport (Eel River)



Bartholomew County Watersheds Used for Public Drinking Water

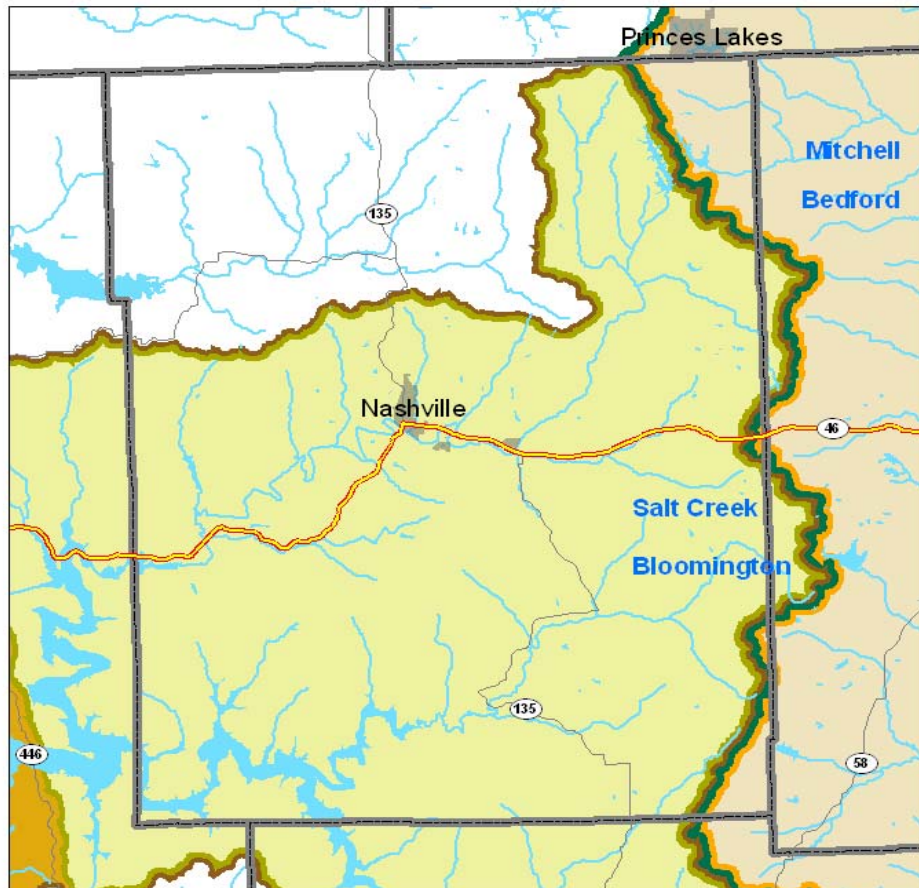
- Mitchell Watershed (East Fork White River)
- Bedford Watershed (East Fork White River)
- Salt Creek Watershed (Monroe Reservoir)
- Bloomington Watershed (Monroe Reservoir)





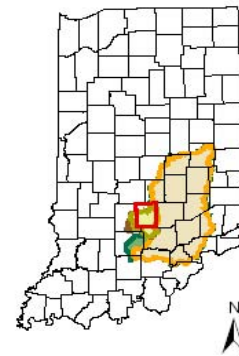
Boone County Watersheds Used for Public Drinking Water

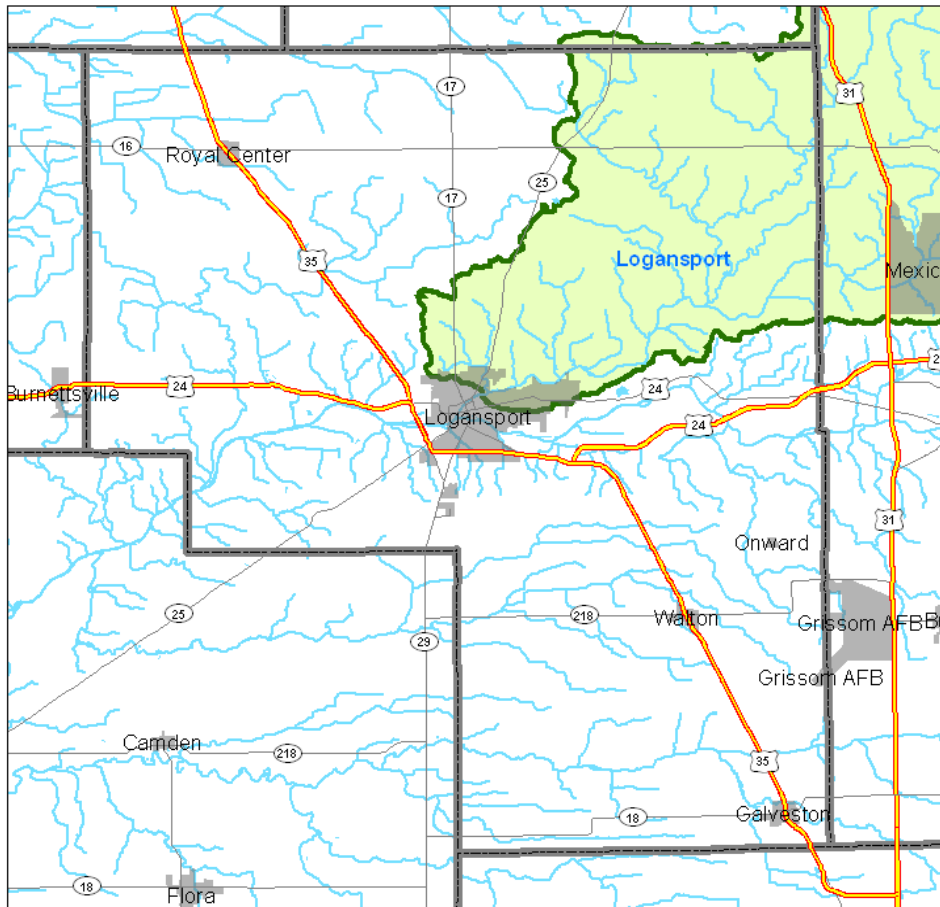
- Speedway Watershed (Eagle Creek, Downstream of Reservoir)
- Indianapolis - Eagle Creek (Eagle Creek Reservoir)
- Indianapolis - White River, Indianapolis - White River North (White River)



Brown County Watersheds Used for Public Drinking Water

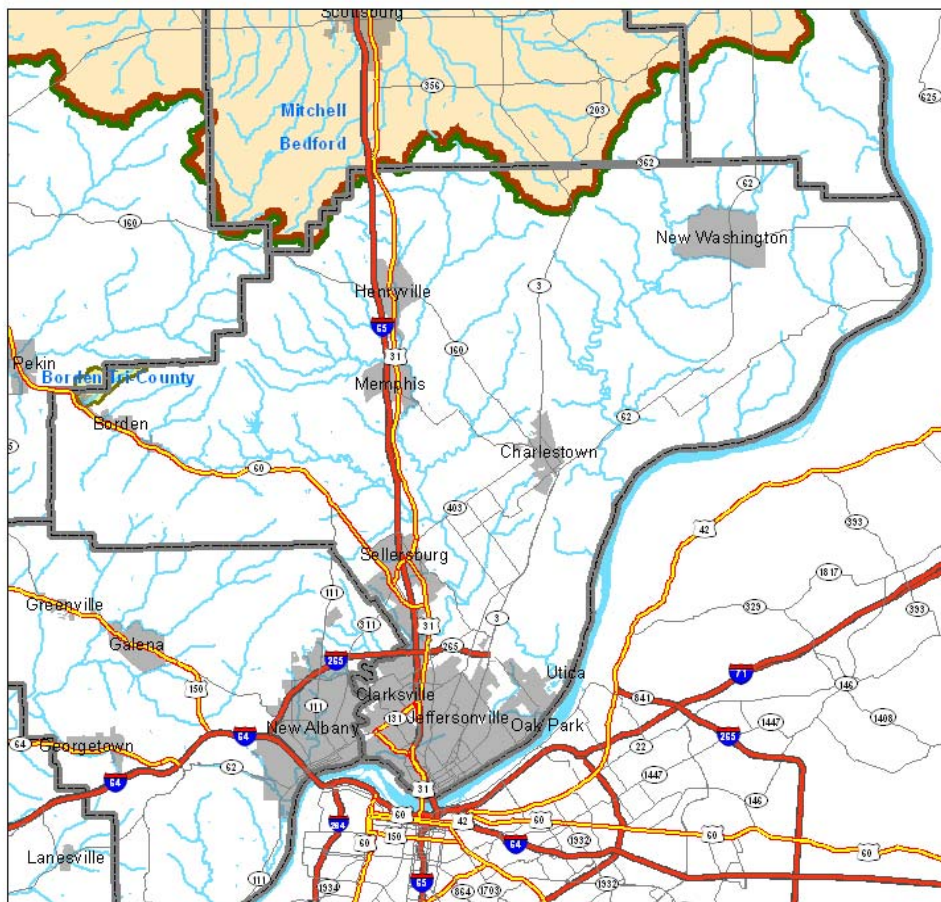
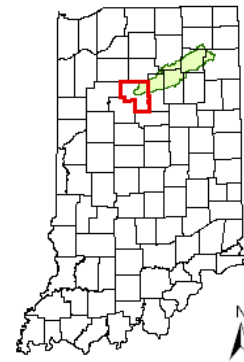
- Salt Creek Watershed (Monroe Reservoir)
- Bloomington Watershed (Monroe Reservoir)
- Mitchell Watershed (East Fork White River)
- Bedford Watershed (East Fork White River)





Cass County Watersheds Used for Public Drinking Water

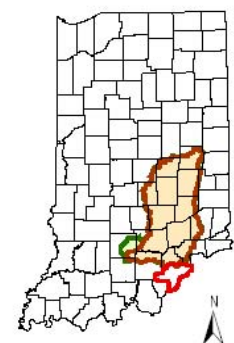
Logansport Watershed (Eel River)

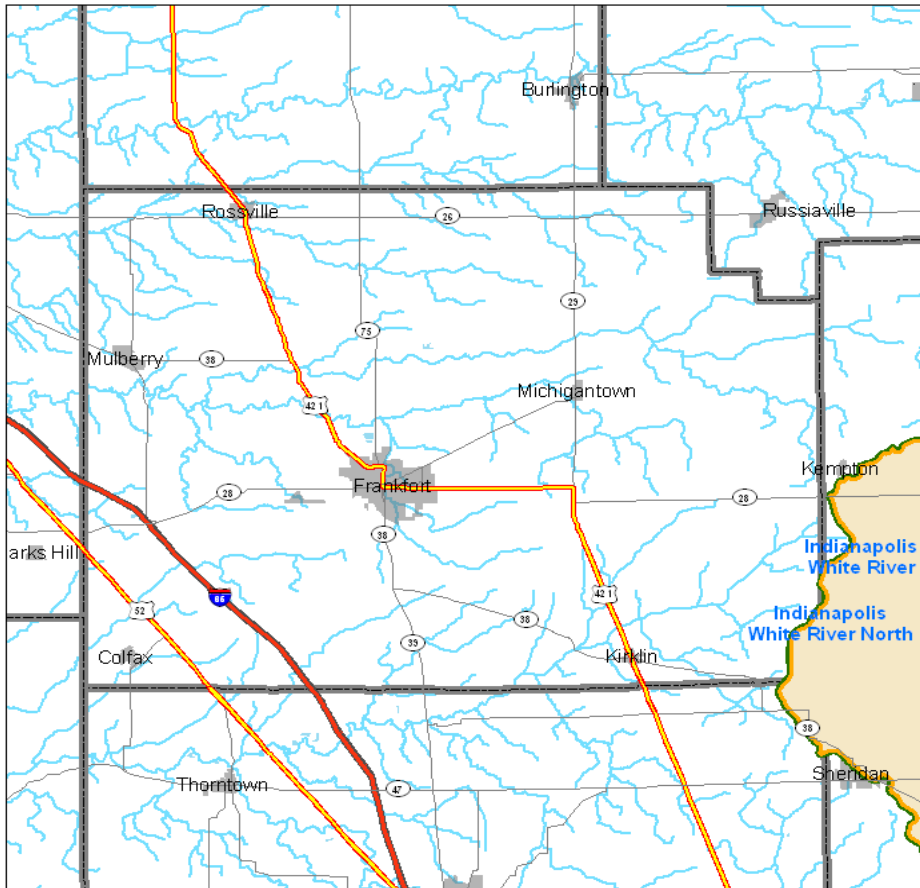


Clark County Watersheds Used for Public Drinking Water

The watershed for the Ohio River, used by Evansville, is not shown

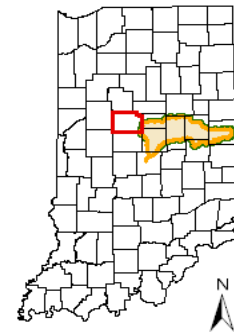
- Borden Tri-County Region (Packwood Lake)
- Mitchell Watershed (East Fork White River)
- Bedford Watershed (East Fork White River)



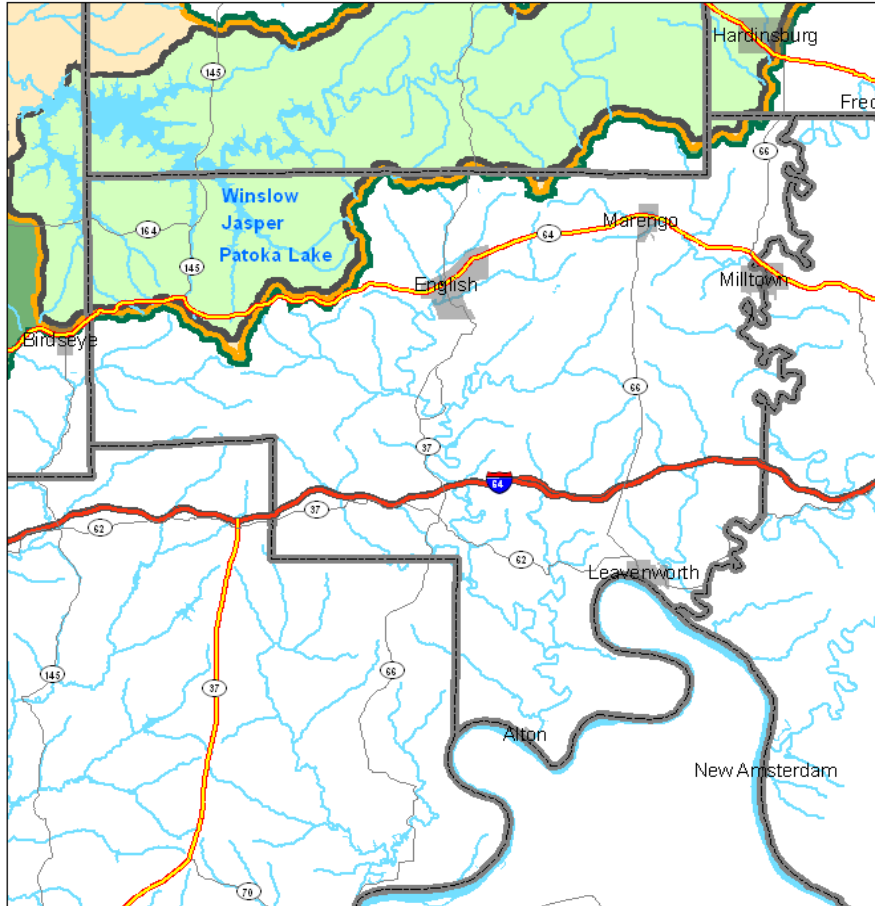


Clinton County Watersheds Used for Public Drinking Water

- Indianapolis - White River (White River)
- Indianapolis - White River North (White River)

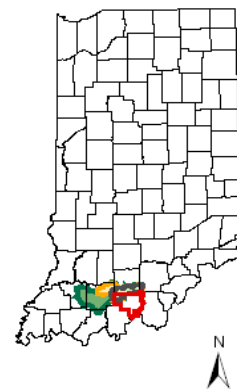


0 1 2 3 4 5 6 Miles

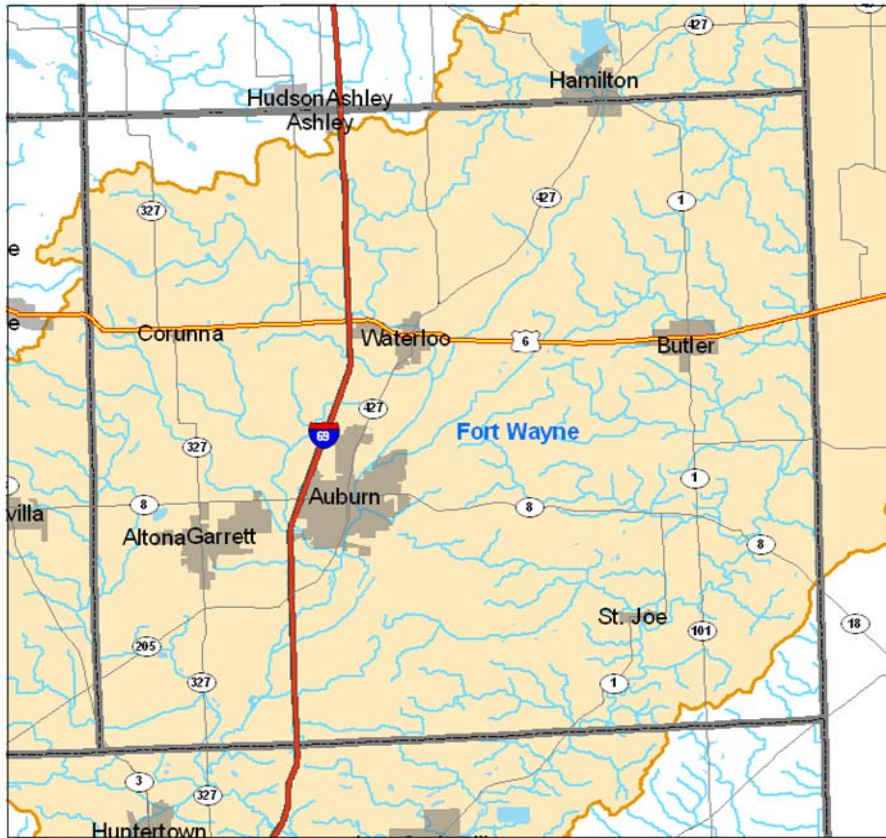


Crawford County Watersheds Used for Public Drinking Water

- Winslow Watershed (Patoka River)
- Jasper Watershed (Patoka River)
- Patoka Lake Regional Water (Patoka Reservoir)

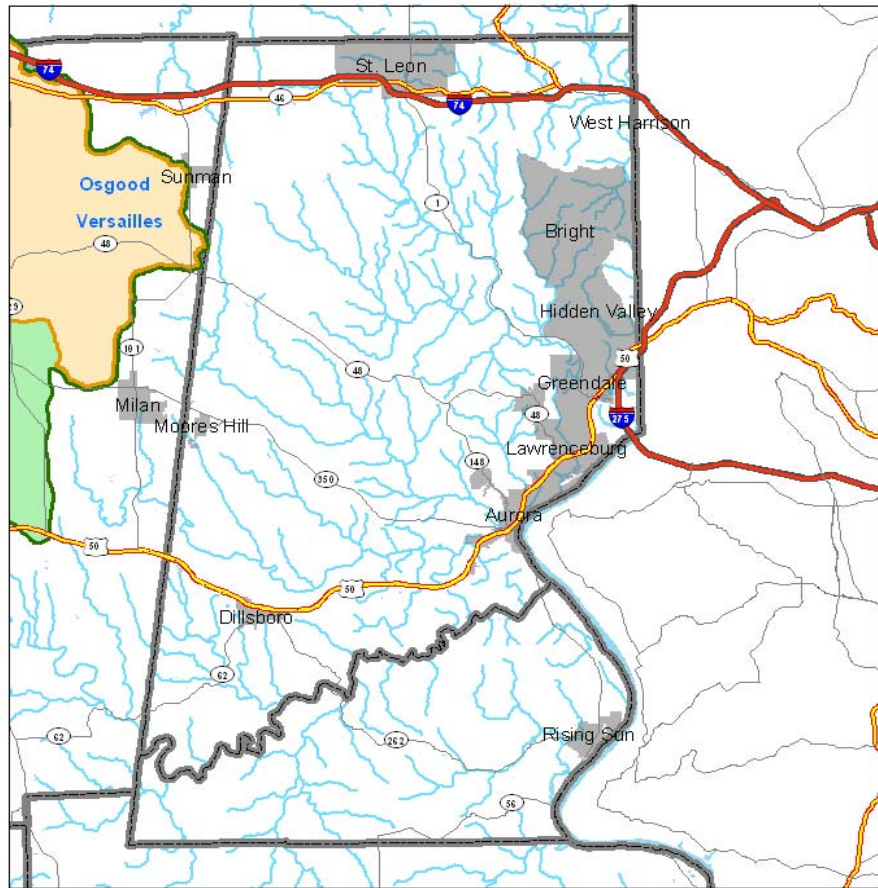


0 1 2 3 4 5 6 Miles



De Kalb County Watersheds Used for Public Drinking Water

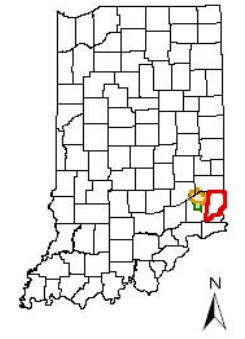
Fort Wayne - 3 Rivers Filtration Plant (St. Joseph River)

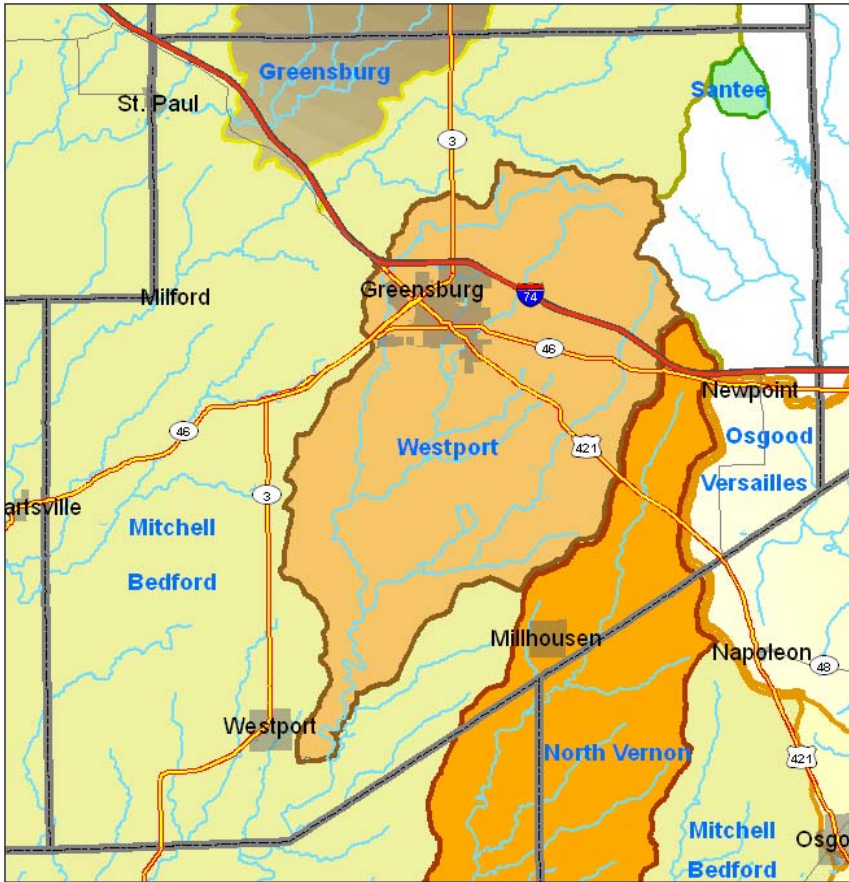


Dearborn County Watersheds Used for Public Drinking Water

Osgood Watershed (Laughery Creek)

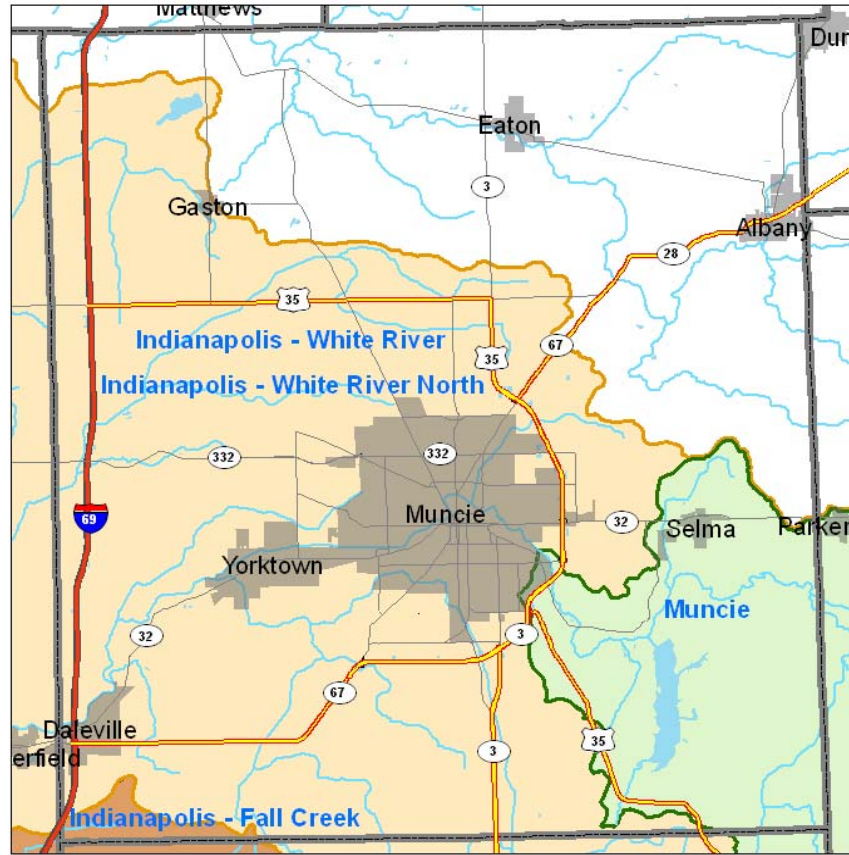
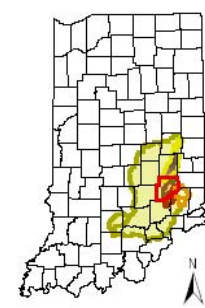
Versailles Water Works (Laughery Creek)





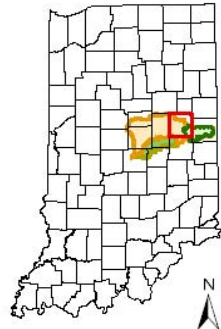
Decatur County Watersheds Used for Public Drinking Water

- Greensburg Watershed (Flatrock River)
- Santee Utilities
- Osgood Watershed, Versailles Watershed (Laughery Creek)
- Westport Watershed (Sand Creek And Two Small Lakes)
- North Vernon (Muscatatuck River)
- Mitchell Watershed, Bedford Watershed (East Fork White River)

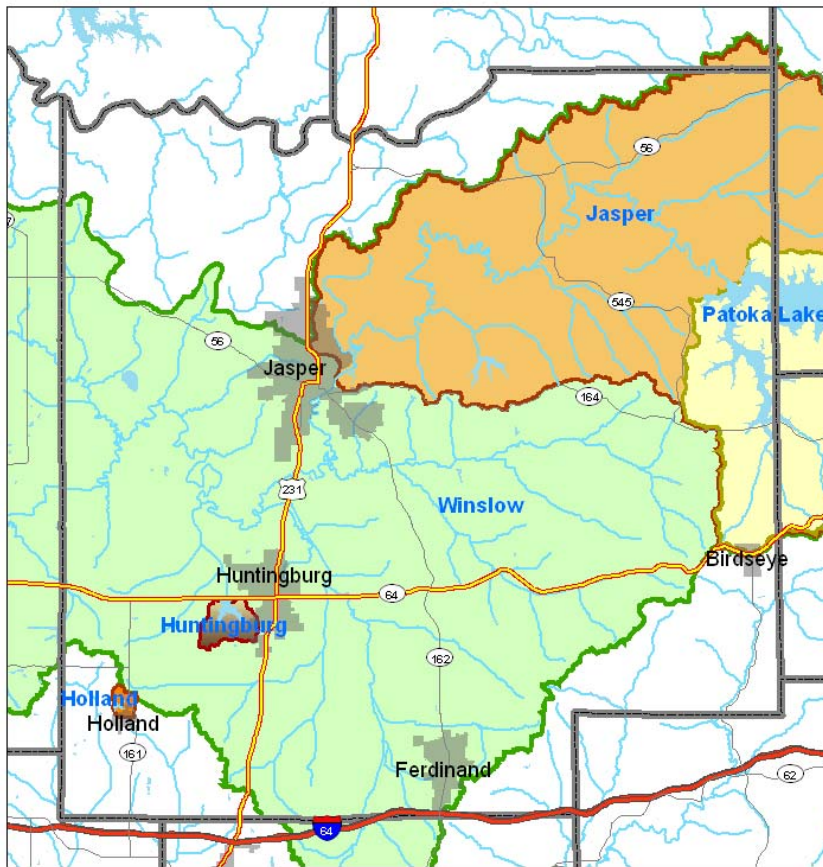


Delaware County Watersheds Used for Public Drinking Water

- Muncie (Indiana - American Water) (White River)
- Indianapolis - White River North, Indianapolis - White River (White River)
- Indianapolis - Fall Creek (Fall Creek)



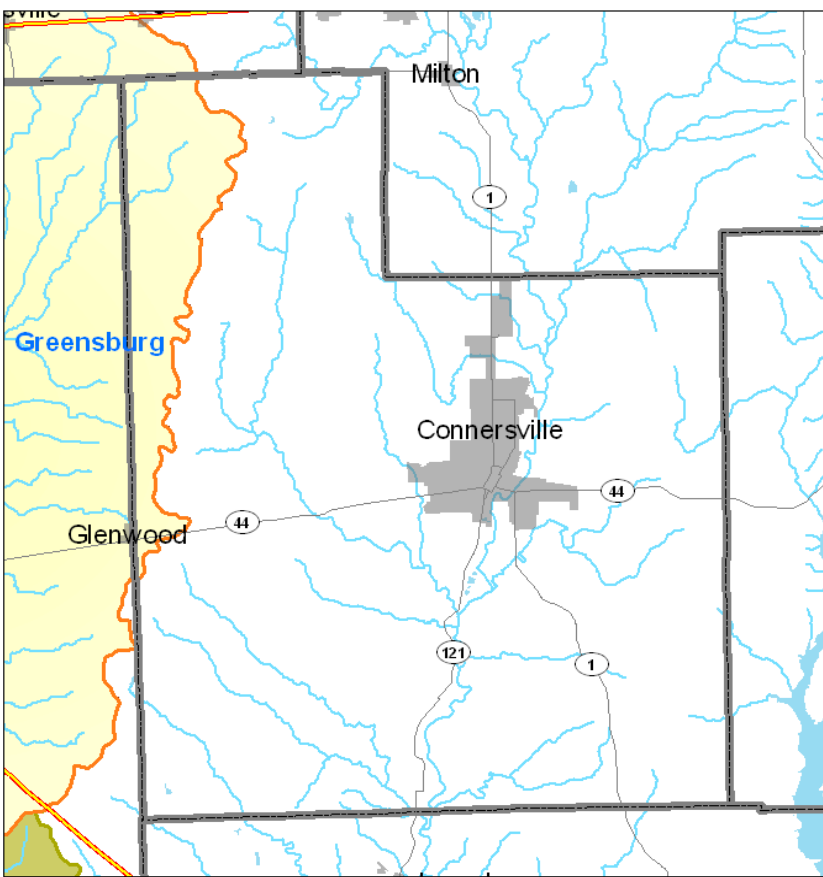
Dubois County Watersheds Used for Public Drinking Water



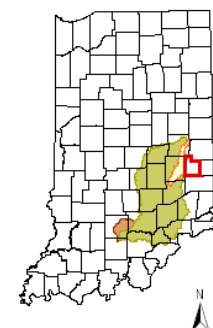
- Patoka Lake Regional Water (Patoka Reservoir)
- Jasper Watershed (Patoka River)
- Winslow Watershed (Patoka River)
- Huntingburg Watershed (Huntingburg Lake)
- Holland Watershed (Holland Lake)



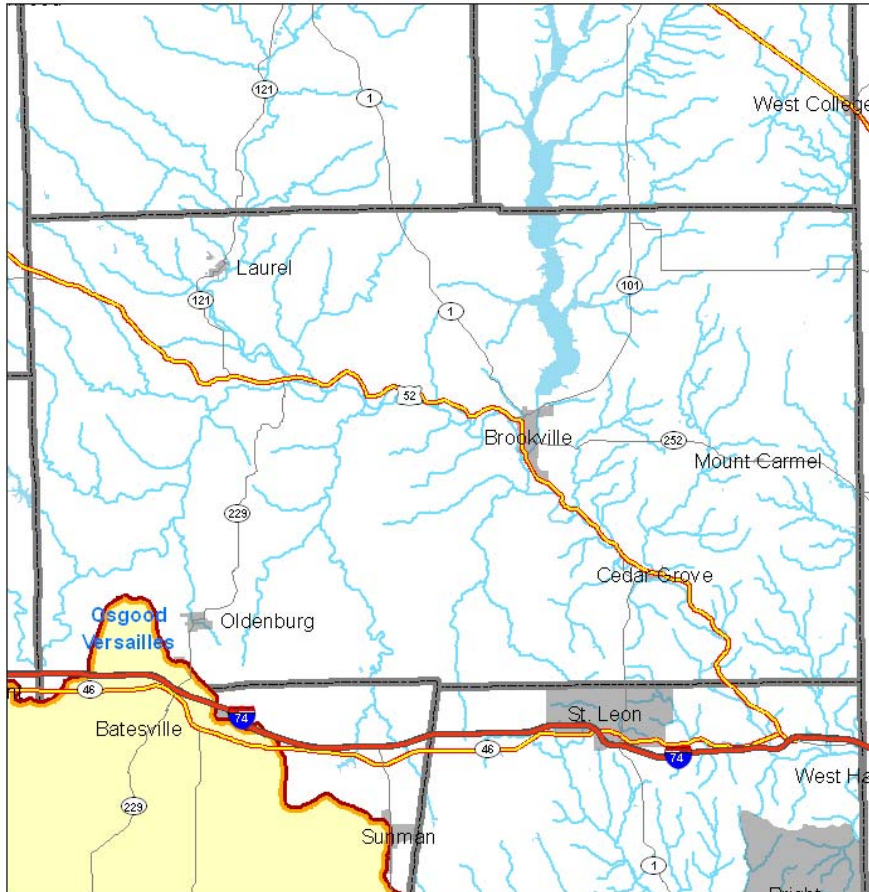
Fayette County Watersheds Used for Public Drinking Water



- Bedford Watershed (East Fork White River)
- Greensburg Watershed (Flatrock River)
- Mitchell Watershed (East Fork White River)



Franklin County Watersheds Used for Public Drinking Water

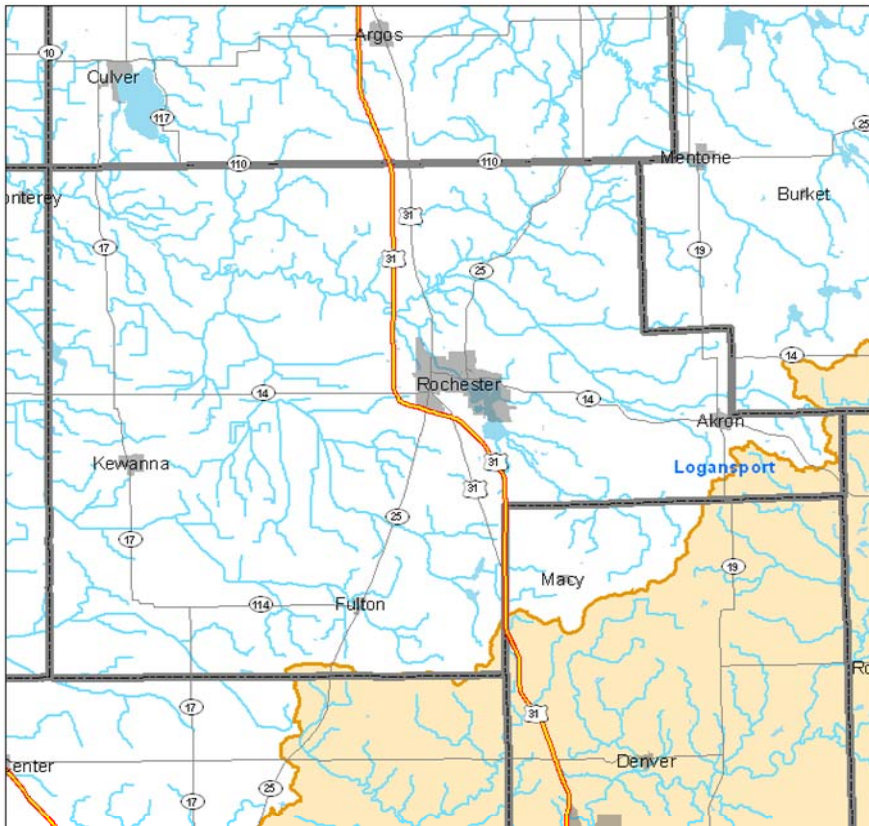


- Osgood Watershed (Laughery Creek)
- Versailles Water Works (Laughery Creek)



0 1 2 4 6 8 Miles

Fulton County Watersheds Used for Public Drinking Water

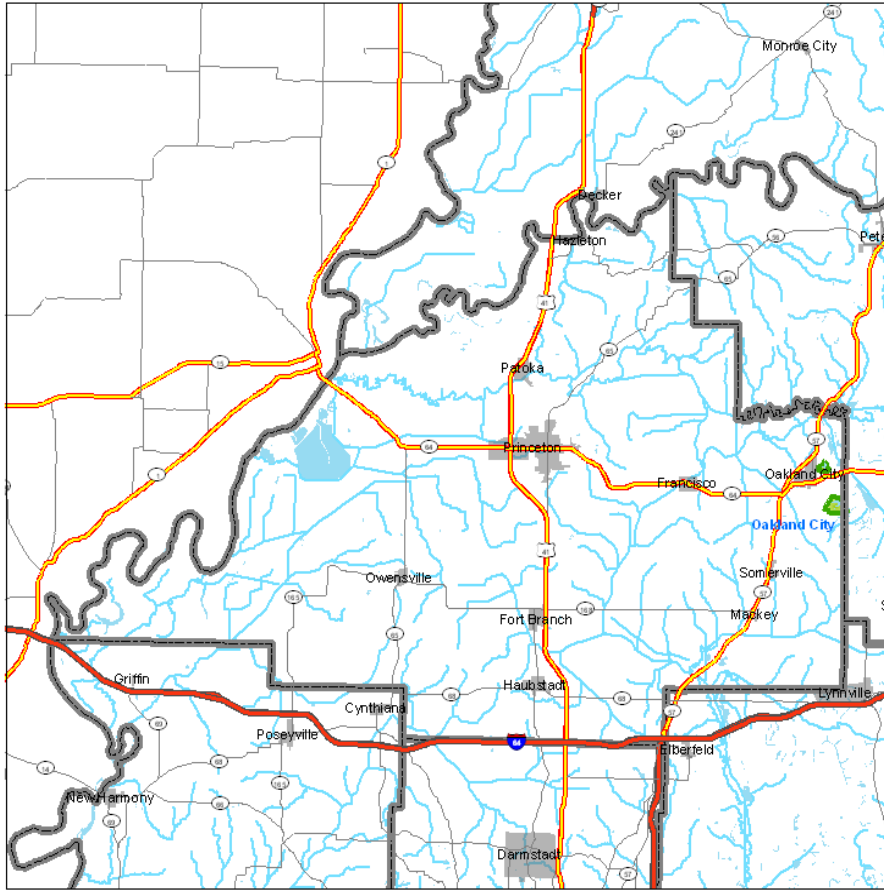


- Logansport Watershed (Eel River)

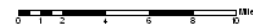


0 1 2 4 6 8 Miles

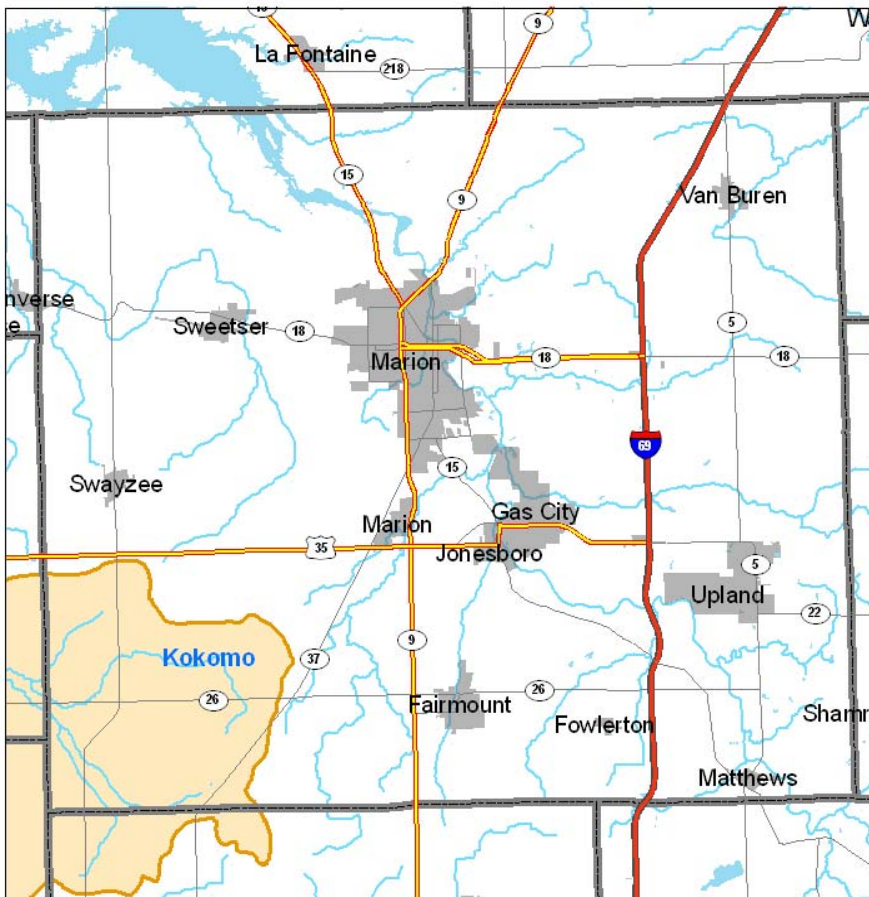
Gibson County Watersheds Used for Public Drinking Water



■ Oakland City Watershed
(Old Lake, New Lake, Patoka Reservoir)

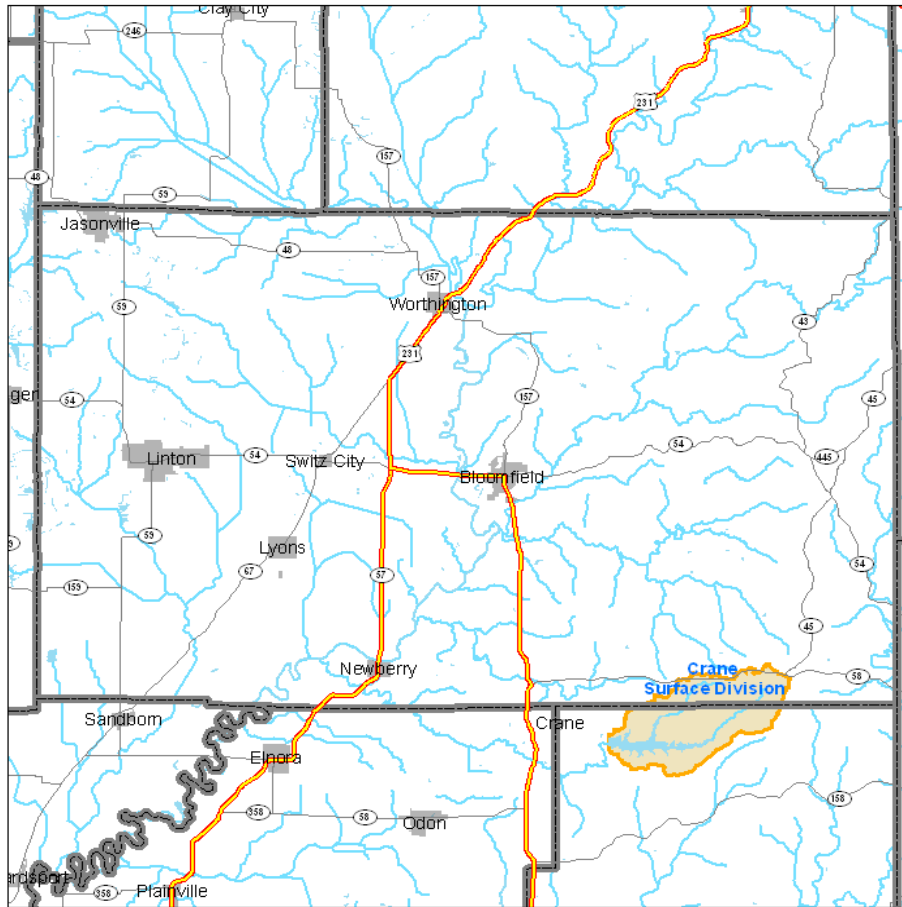


Grant County Watersheds Used for Public Drinking Water



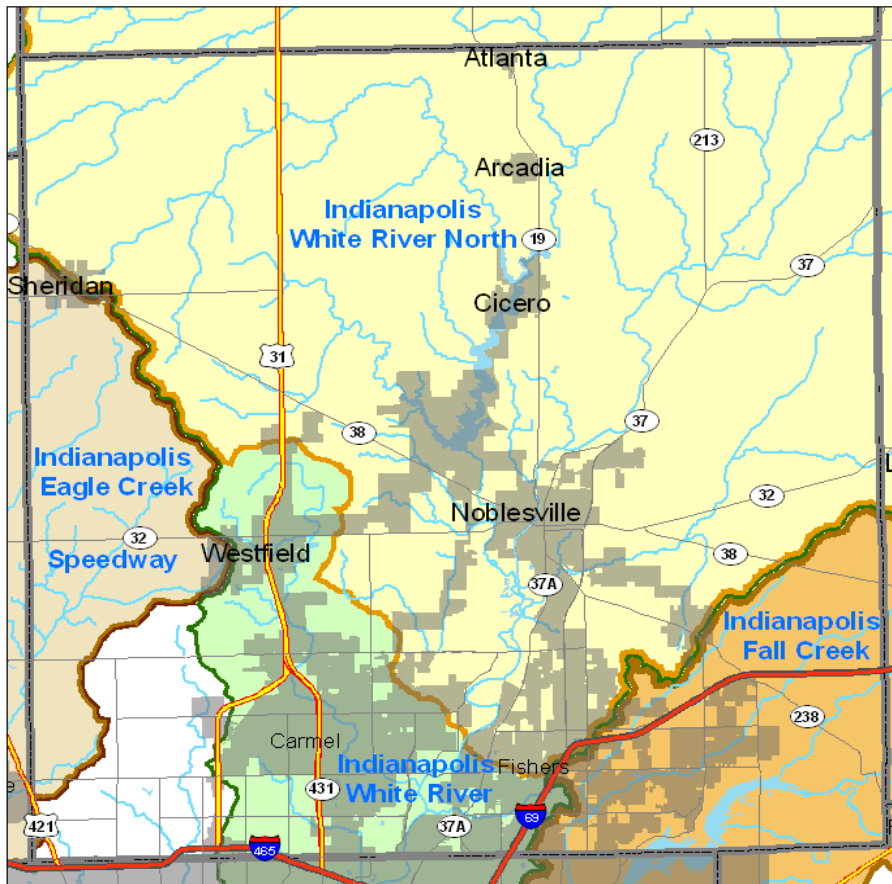
■ Kokomo (Indiana - American Water)
Wildcat Creek





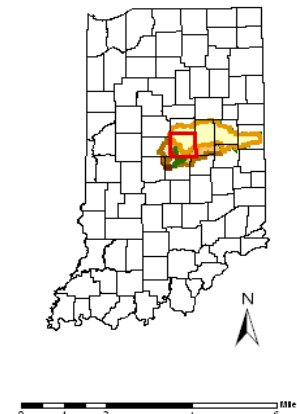
Greene County Watersheds Used for Public Drinking Water

Crane Division,
Naval Surface Warfare Center
(Lake Greenwood)



Hamilton County Watersheds Used for Public Drinking Water

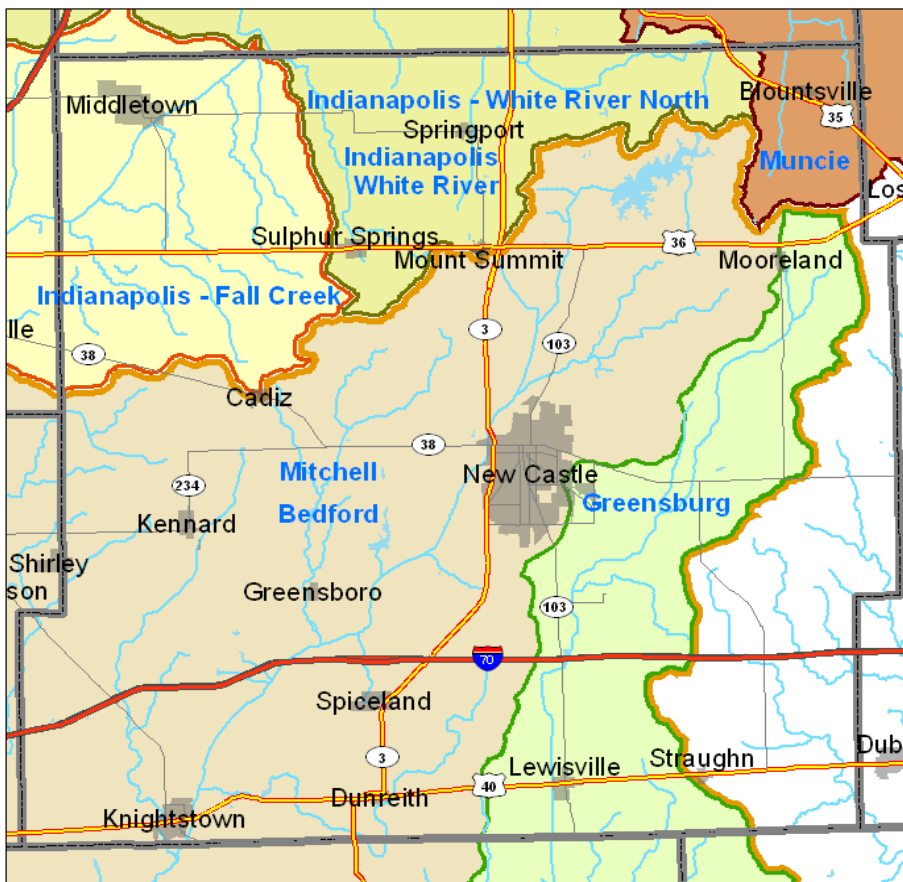
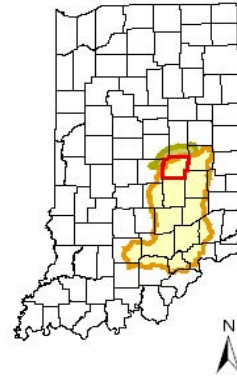
- Indianapolis - White River North (White River)
- Indianapolis - White River (White River)
- Indianapolis - Fall Creek (Fall Creek)
- Indianapolis - Eagle Creek (Eagle Creek)
- Speedway Watershed (Eagle Creek, Downstream of Reservoir)





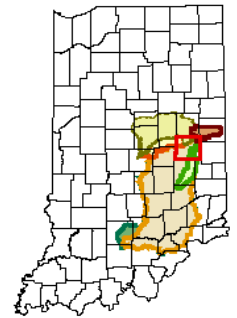
Hancock County Watersheds Used for Public Drinking Water

- Bedford Watershed, Mitchell Watershed (East Fork White River)
- Indianapolis - Fall Creek (Fall Creek)

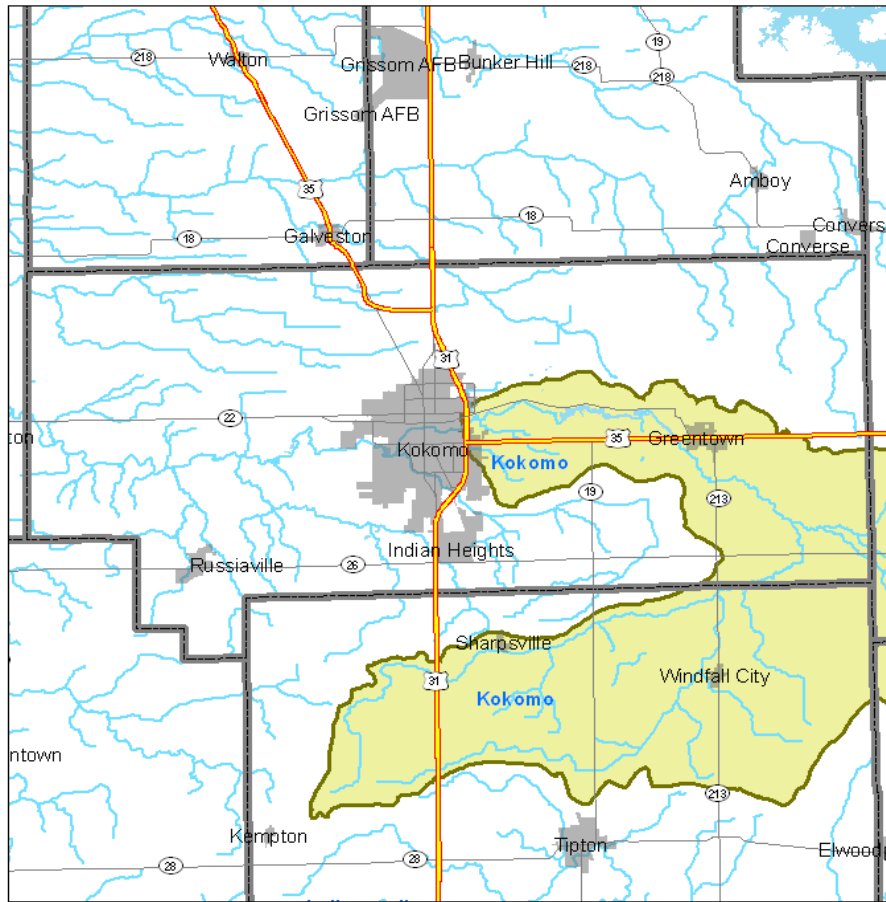



Henry County Watersheds Used for Public Drinking Water

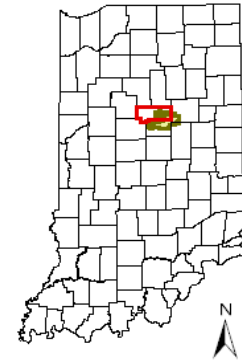
- Muncie (Indiana - American Water) (White River)
- Indianapolis - White River, Indianapolis - White River North (White River)
- Indianapolis - Fall Creek (Fall Creek)
- Greensburg Municipal Water (Flatrock River and Upland Reservoir)
- Bedford Watershed, Mitchell Watershed (East Fork White River)



Howard County Watersheds Used for Public Drinking Water

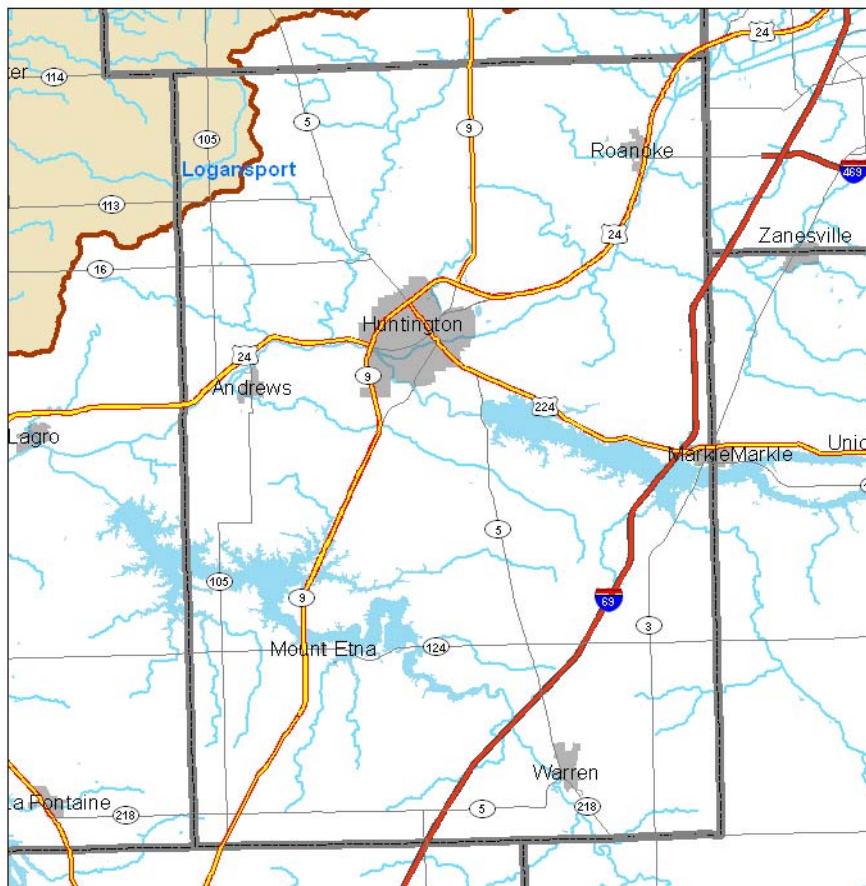



 Kokomo (Indiana - American Water)
(Wildcat Creek)



0 1 2 4 6 8 Miles

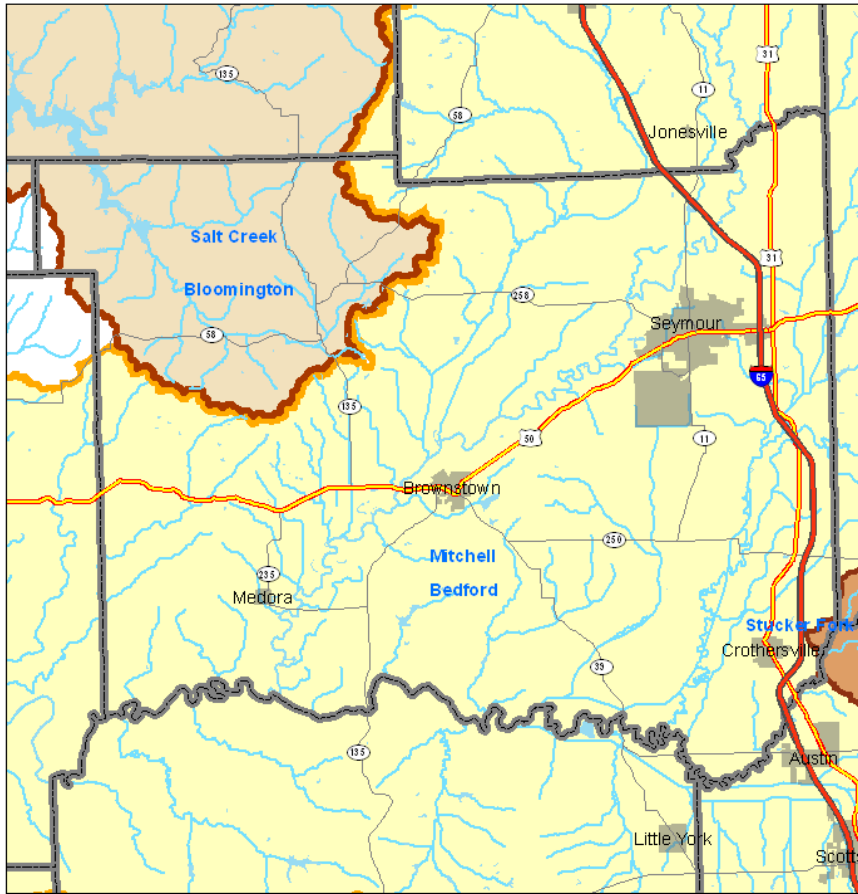
Huntington County Watersheds Used for Public Drinking Water



 Logansport Watershed (Eel River)

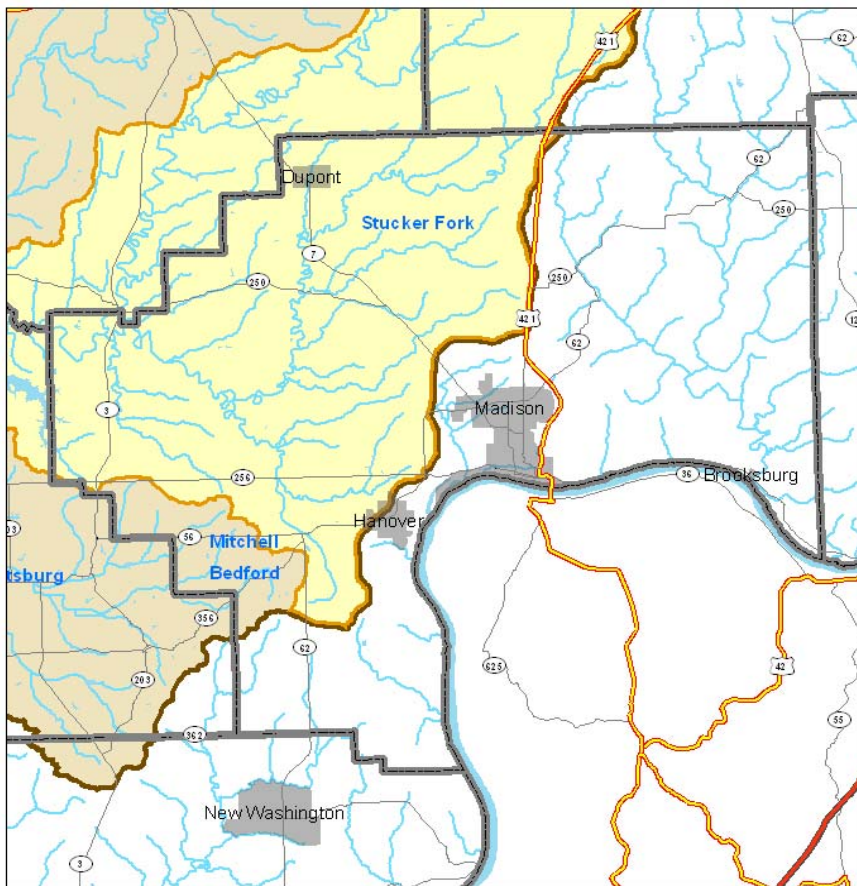
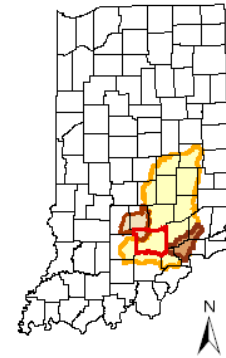


0 1 2 4 6 8 Miles



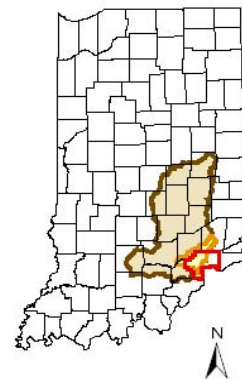
Jackson County Watersheds Used for Public Drinking Water

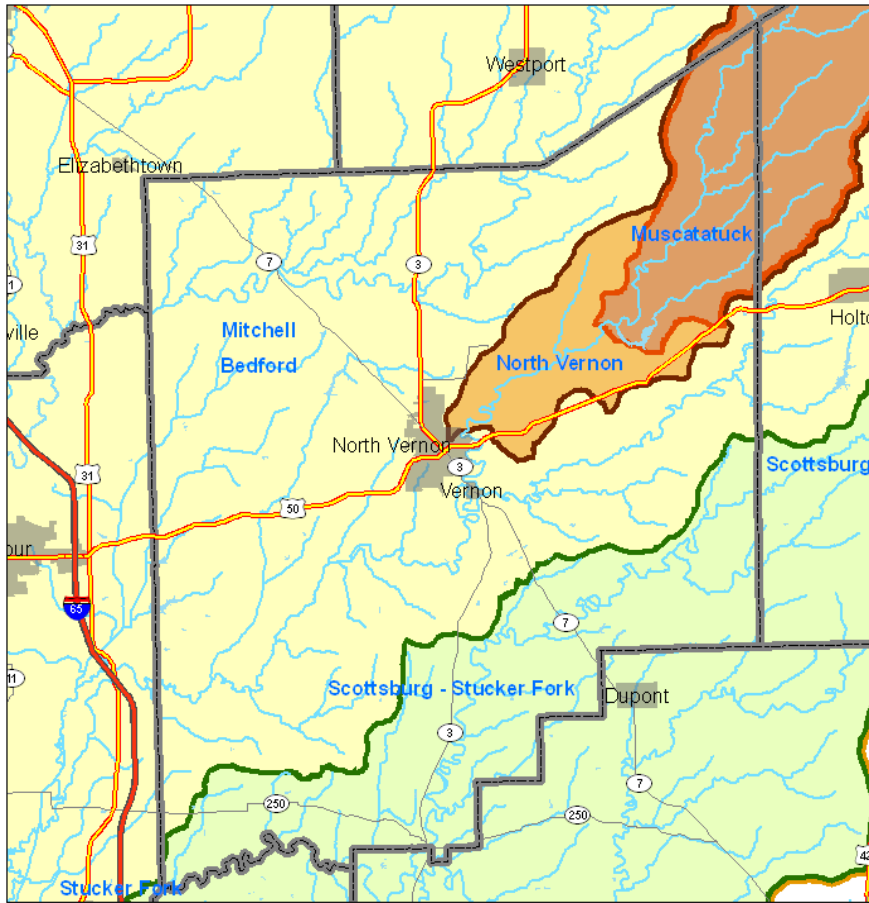
- Bloomington - City Utilities, Bloomington - Salt Creek Services (Monroe Reservoir)
- Scottsburg - Stucker Fork (Muscatatuck River)
- Mitchell Watershed, Bedford Watershed (East Fork White River)



Jefferson County Watersheds Used for Public Drinking Water

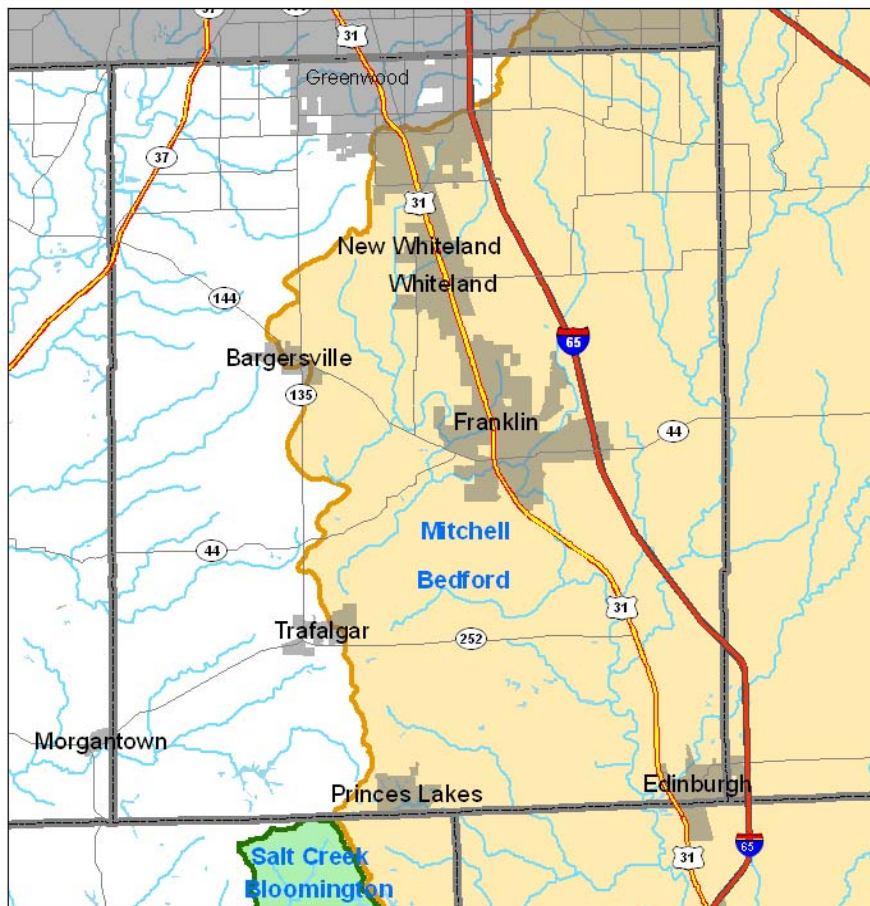
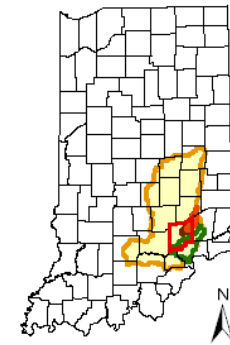
- Stucker Fork Watershed (Muscatatuck River)
- Mitchell Watershed, Bedford Watershed (East Fork White River)





Jennings County Watersheds Used for Public Drinking Water

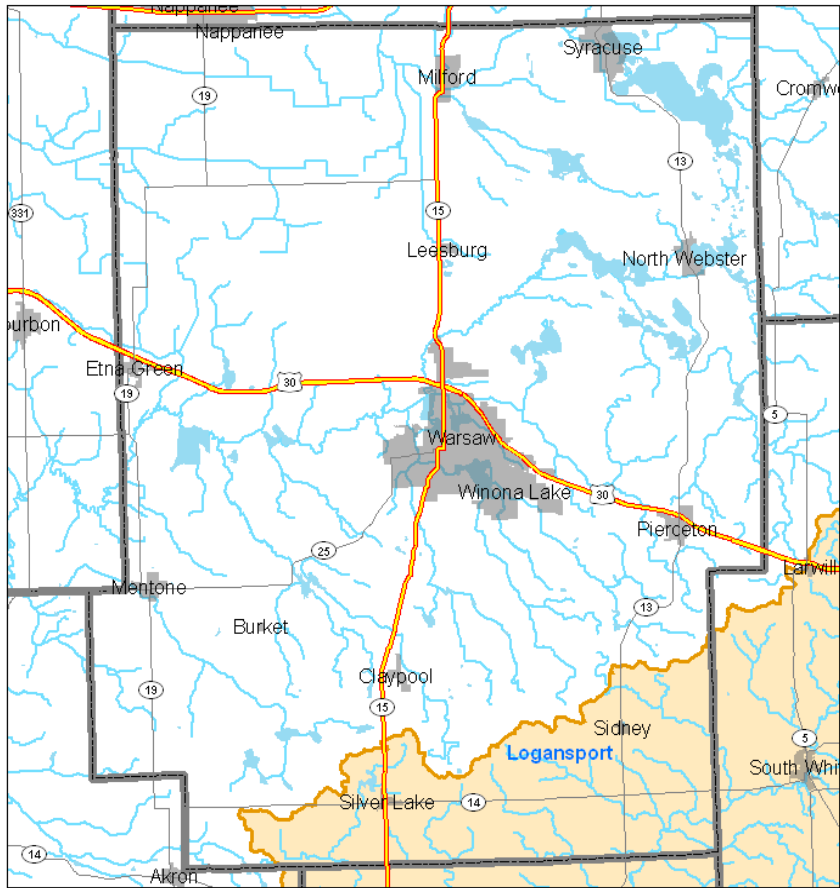
- Muscatatuck State Dev. Center (Muscatatuck River - Vernon Fork)
- North Vernon Watershed (Muscatatuck River)
- Scottsburg - Stucker Fork (Muscatatuck River)
- Mitchell Watershed, Bedford Watershed (East Fork White River)




Johnson County Watersheds Used for Public Drinking Water

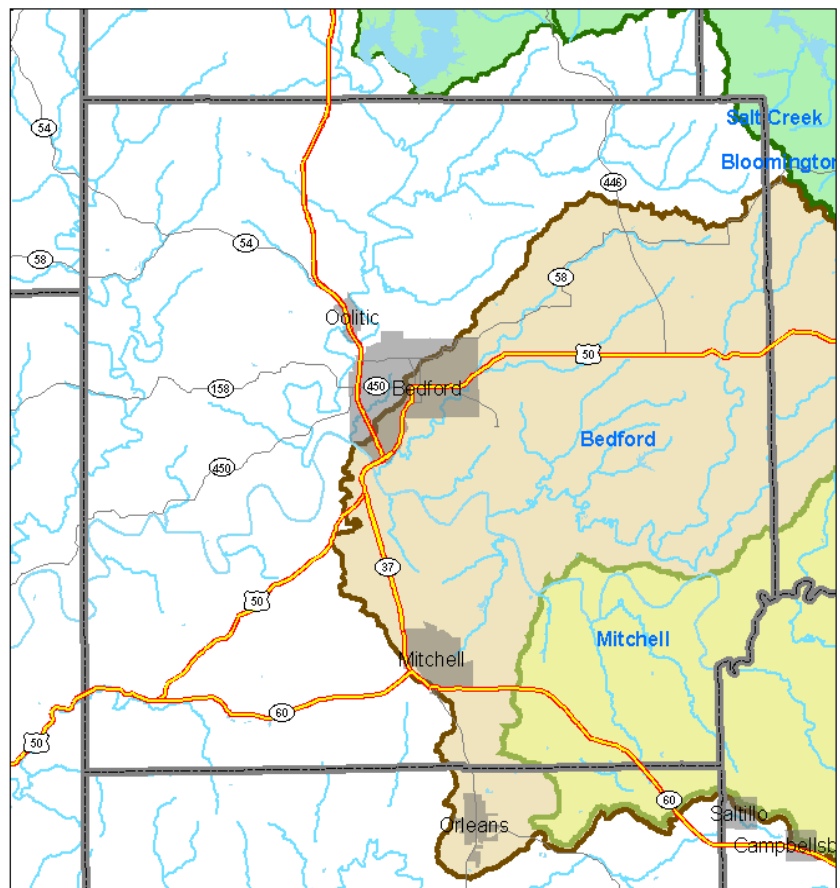
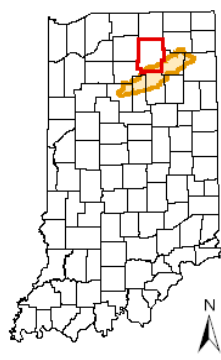
- Bloomington - Salt Creek Services
Bloomington - City Utilities (Monroe Reservoir)
- Mitchell Watershed, Bedford Watershed (East Fork White River)





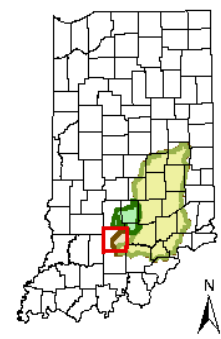
Kosciusko County Watersheds Used for Public Drinking Water

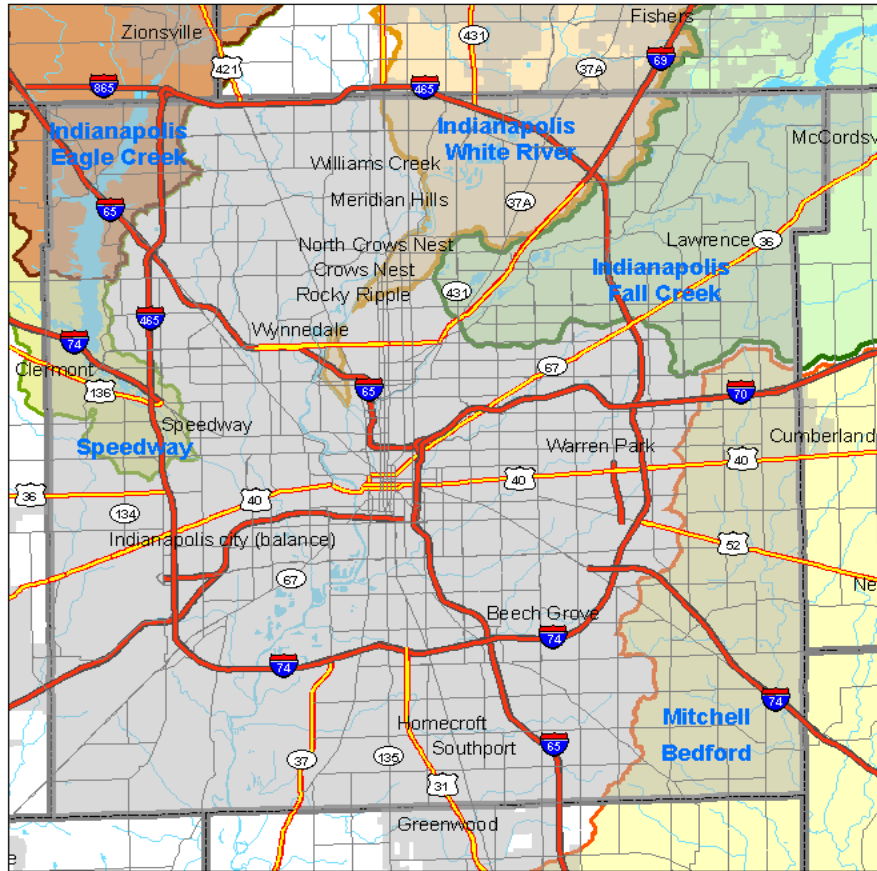
 Logansport Watershed (Eel River)



Lawrence County Watersheds Used for Public Drinking Water

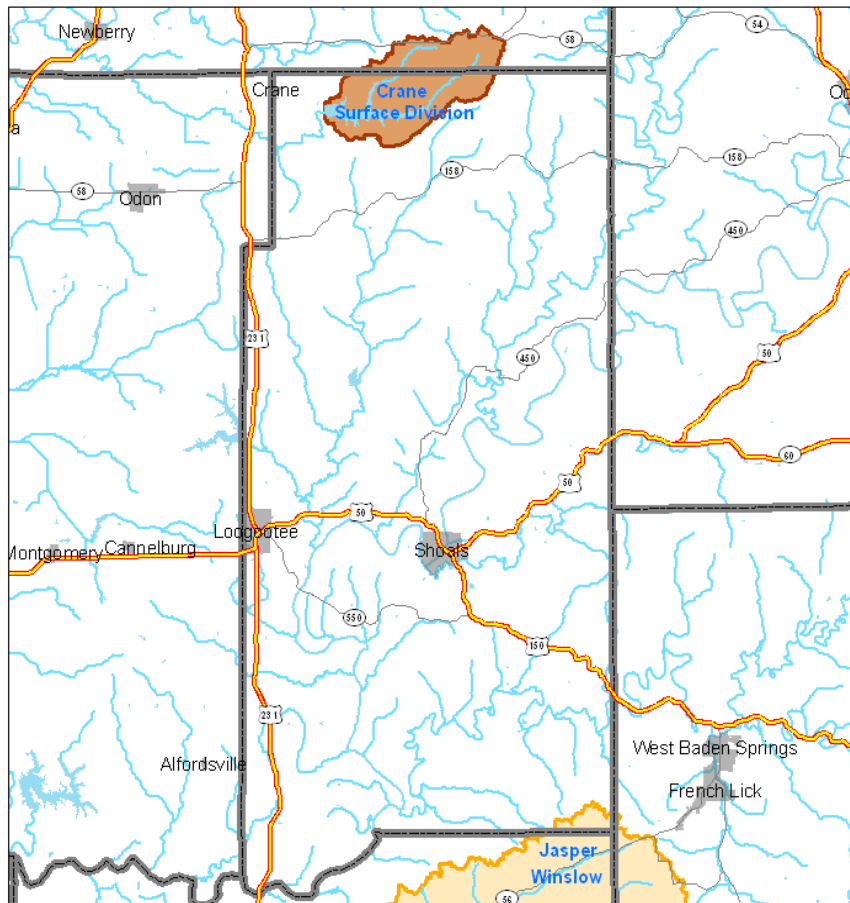
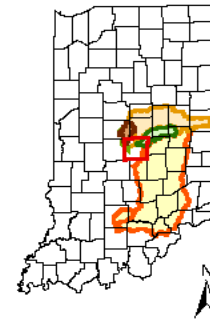
-  Bloomington - Salt Creek Services
-  Bloomington - City Utilities (Monroe Reservoir)
-  Mitchell Watershed (East Fork White River)
-  Bedford Watershed (East Fork White River)





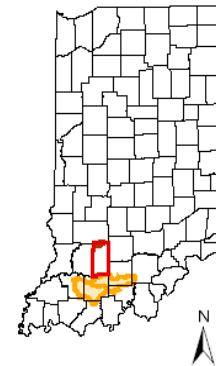
Marion County Watersheds Used for Public Drinking Water

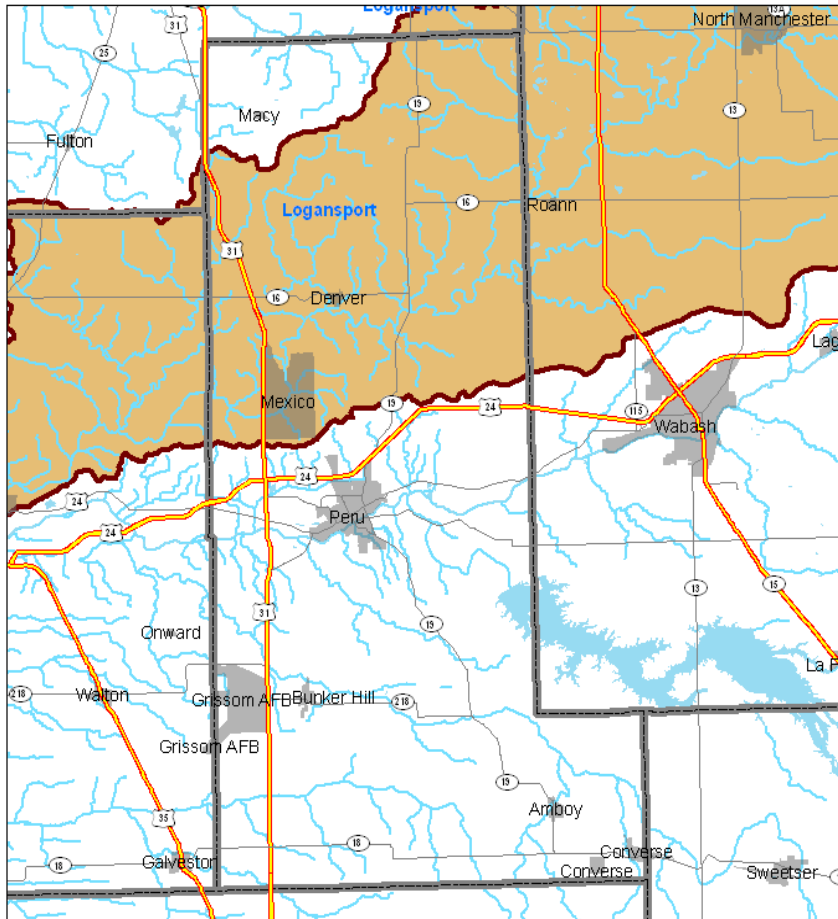
- Indianapolis - Eagle Creek (Eagle Creek Reservoir)
- Speedway Watershed (Eagle Creek, Downstream of Reservoir)
- Indianapolis - Fall Creek (Fall Creek)
- Indianapolis - White River (White River)
- Bedford Watershed, Mitchell Watershed (East Fork White River)



Martin County Watersheds Used for Public Drinking Water

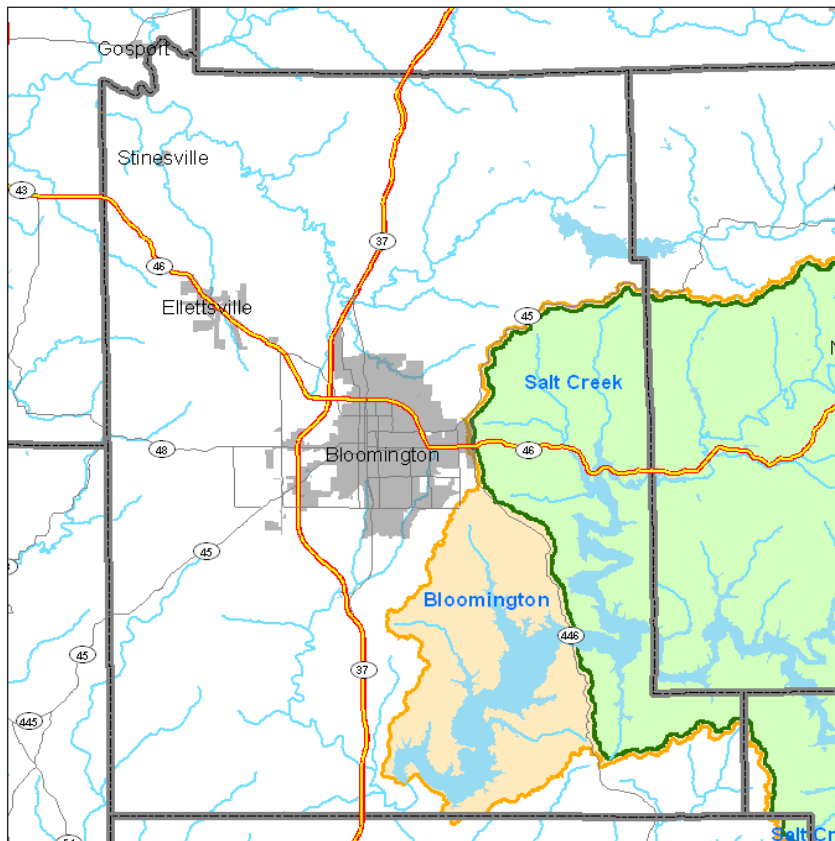
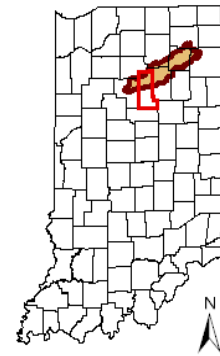
- Winslow Watershed, Jasper Watershed (Patoka River)
- Crane Surface Division Watershed (Lake Greenwood)





Miami County Watersheds Used for Public Drinking Water

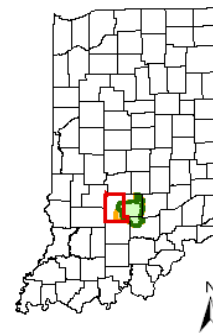
Logansport Watershed (Eel River)

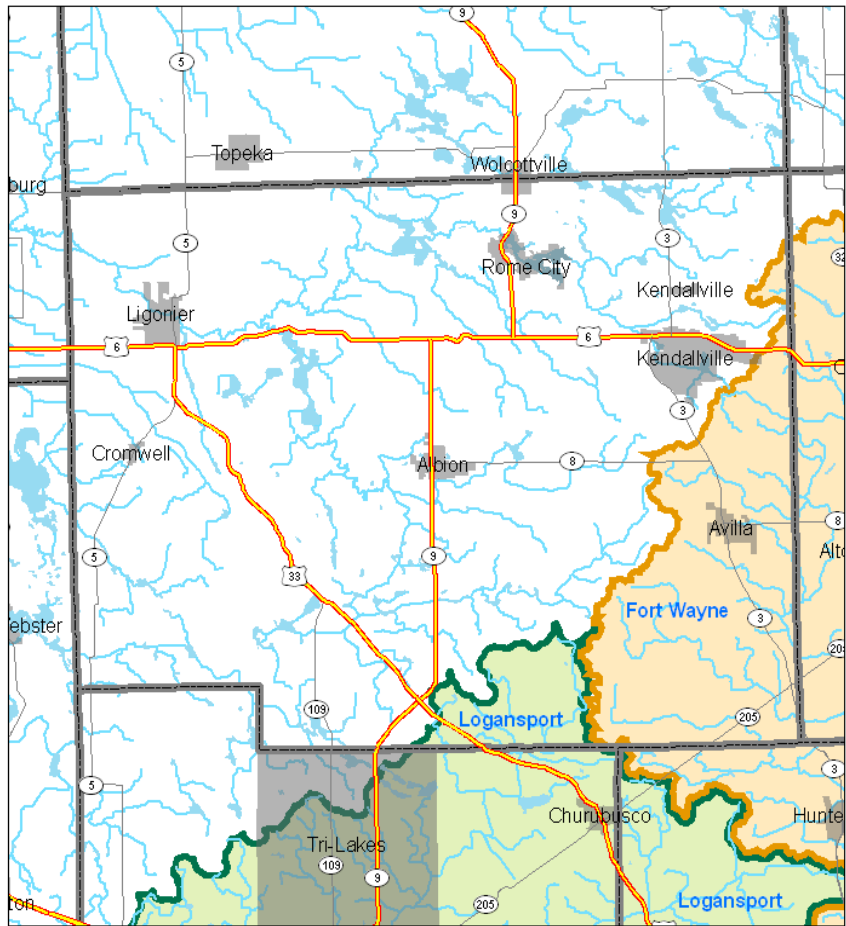


Monroe County Watersheds Used for Public Drinking Water

Bloomington - Salt Creek Services (Monroe Reservoir)

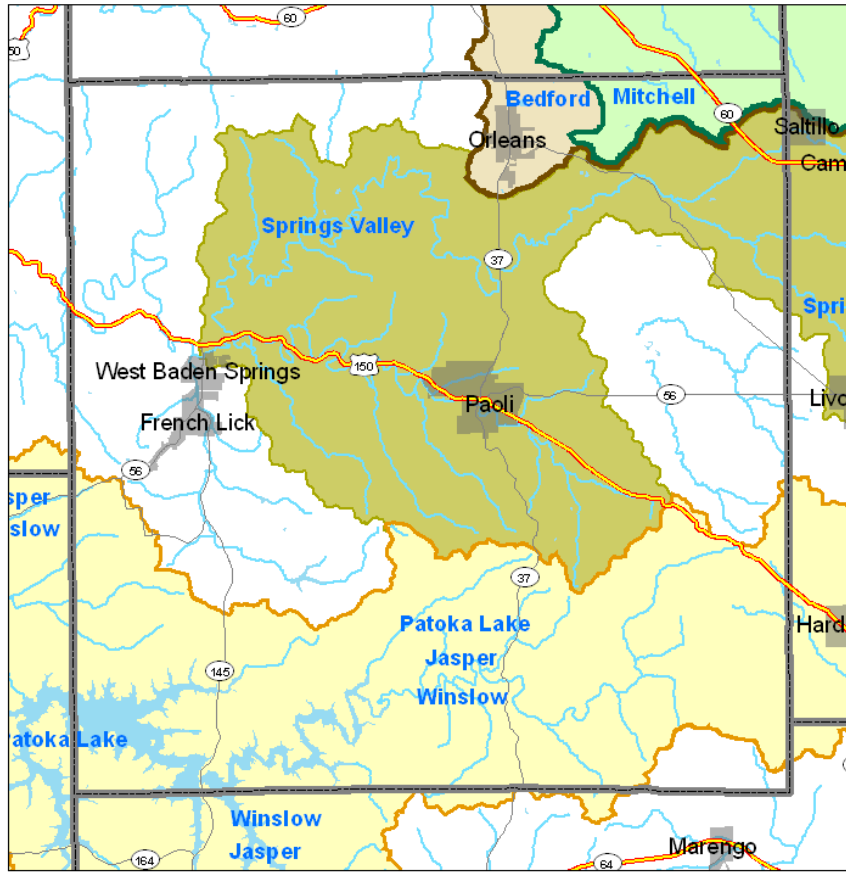
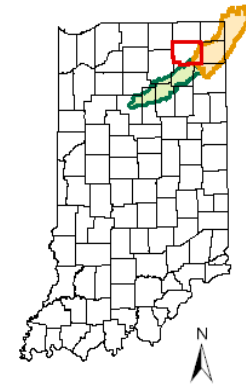
Bloomington - City Utilities (Monroe Reservoir)





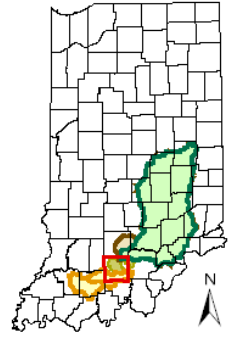
Noble County Watersheds Used for Public Drinking Water

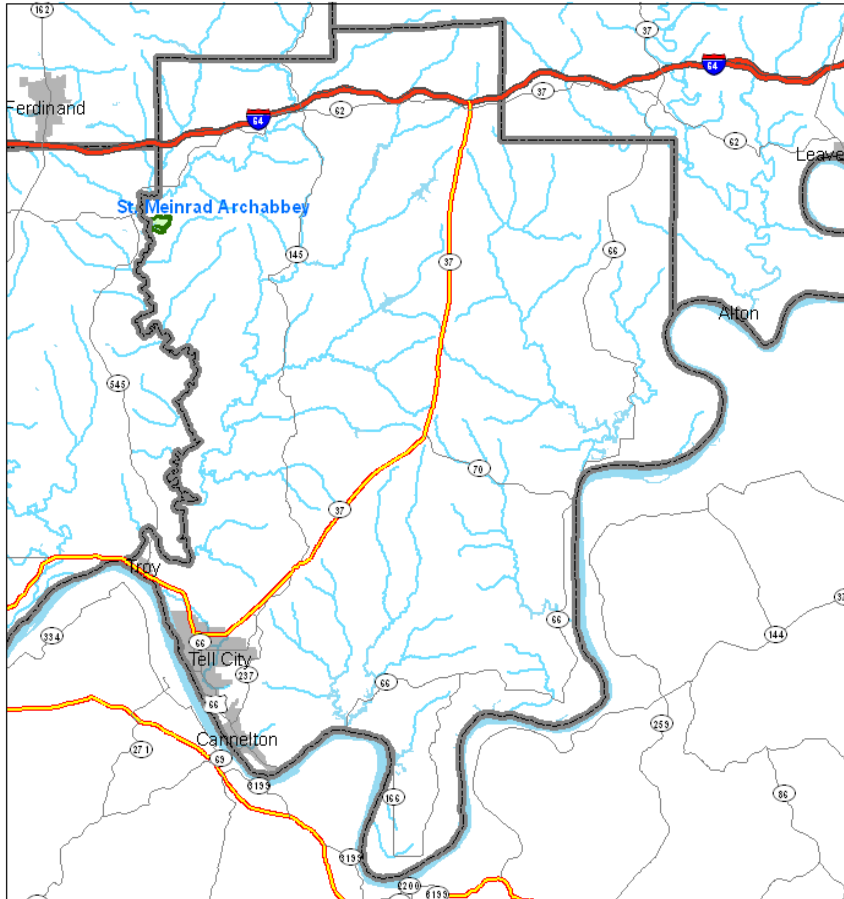
- Fort Wayne Watershed (St. Joseph River)
- Logansport Watershed (Eel River)



Orange County Watersheds Used for Public Drinking Water

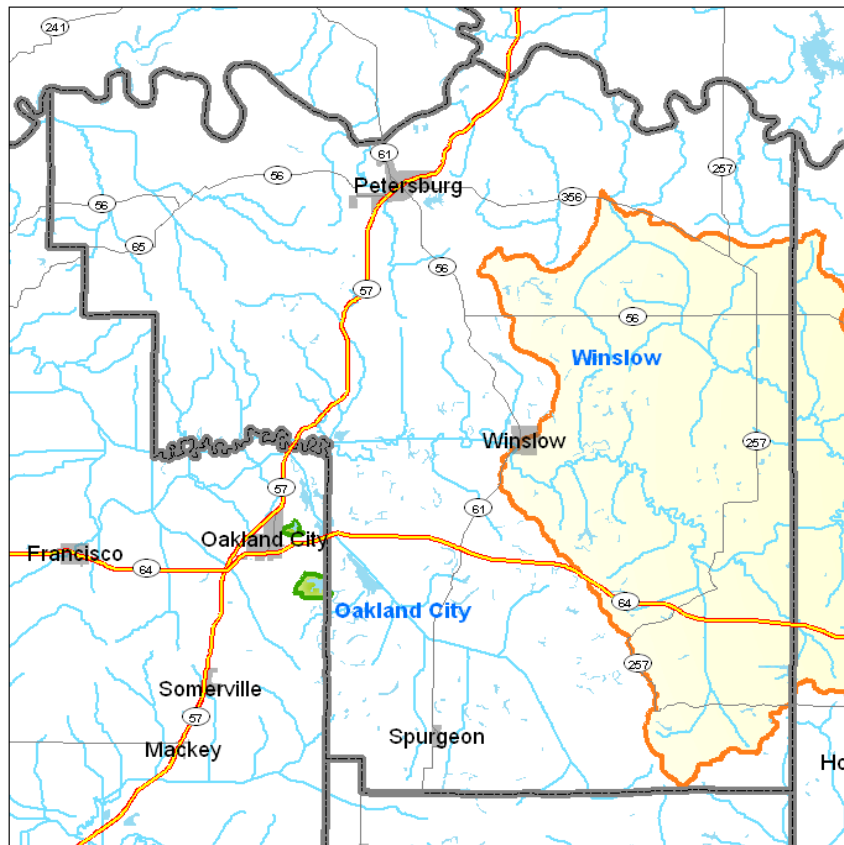
- Mitchell Watershed (East Fork White River)
- Bedford Watershed (East Fork White River)
- Springs Valley Regional Water (Lost River)
- Patoka Lake Regional Water (Patoka Reservoir), Jasper Watershed (Patoka River), Winslow Watershed (Patoka River)





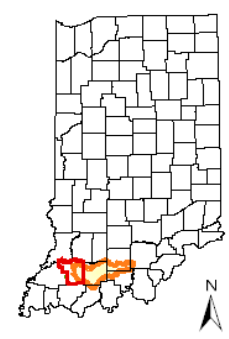
Perry County Watersheds Used for Public Drinking Water

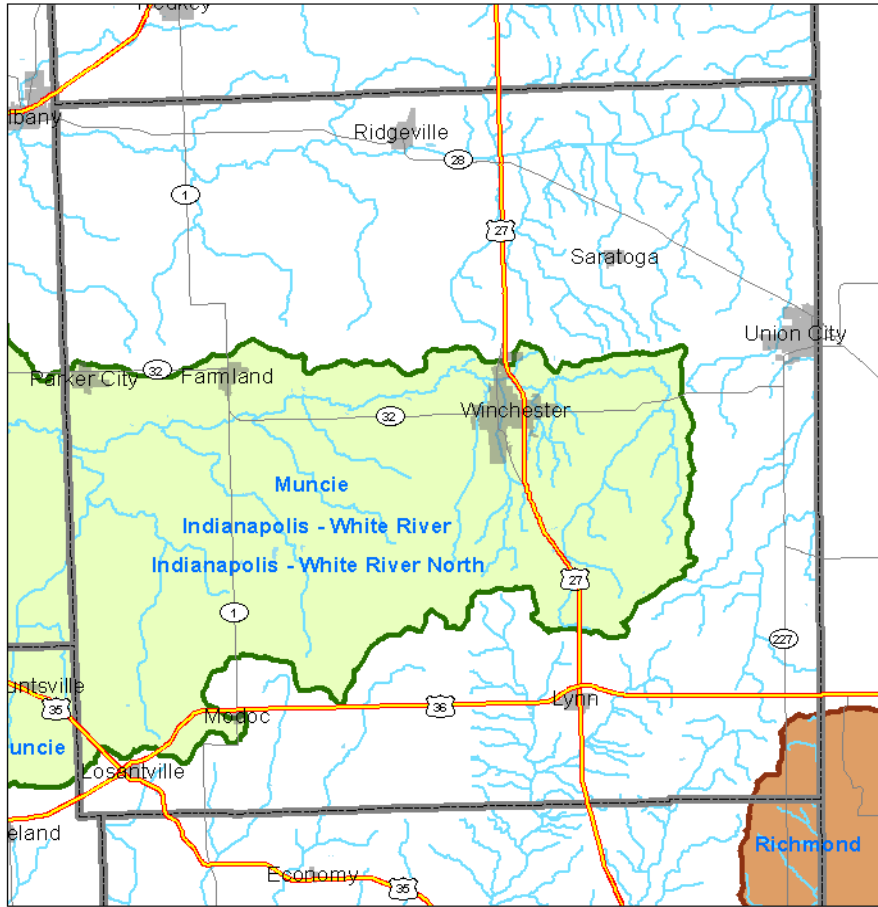
■ St. Meinrad Archabbey Watershed (Lake Fenton, Lake Mars)



Pike County Watersheds Used for Public Drinking Water

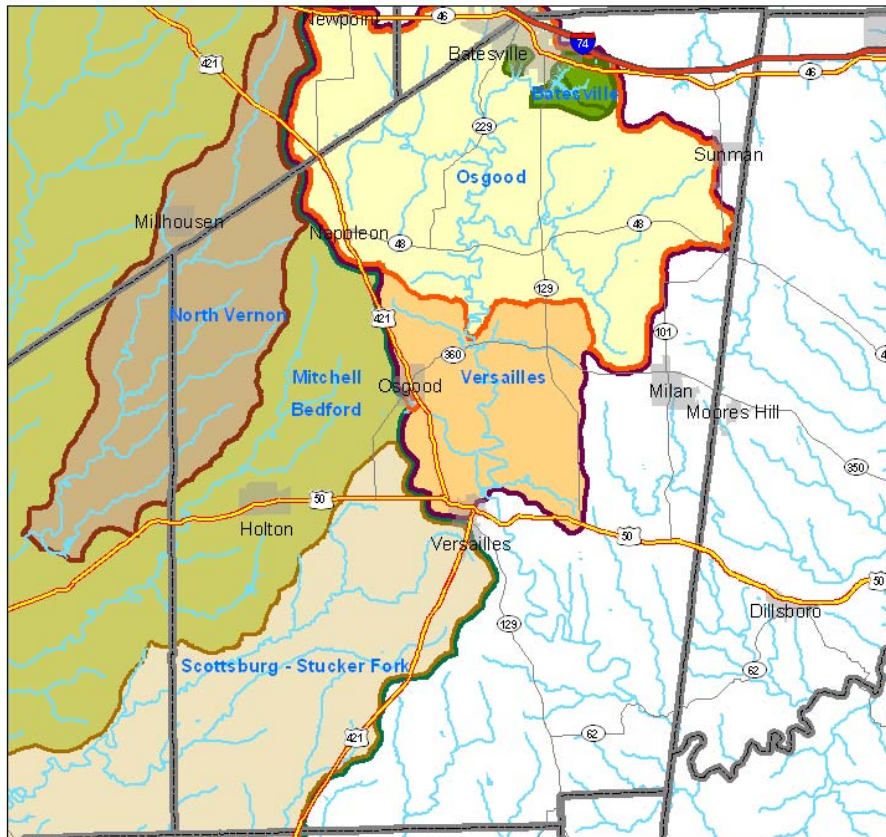
■ Winslow Watershed (Patoka River)
■ Oakland City Watershed (Old Lake, New Lake, Patoka Reservoir)





Randolph County Watersheds Used for Public Drinking Water

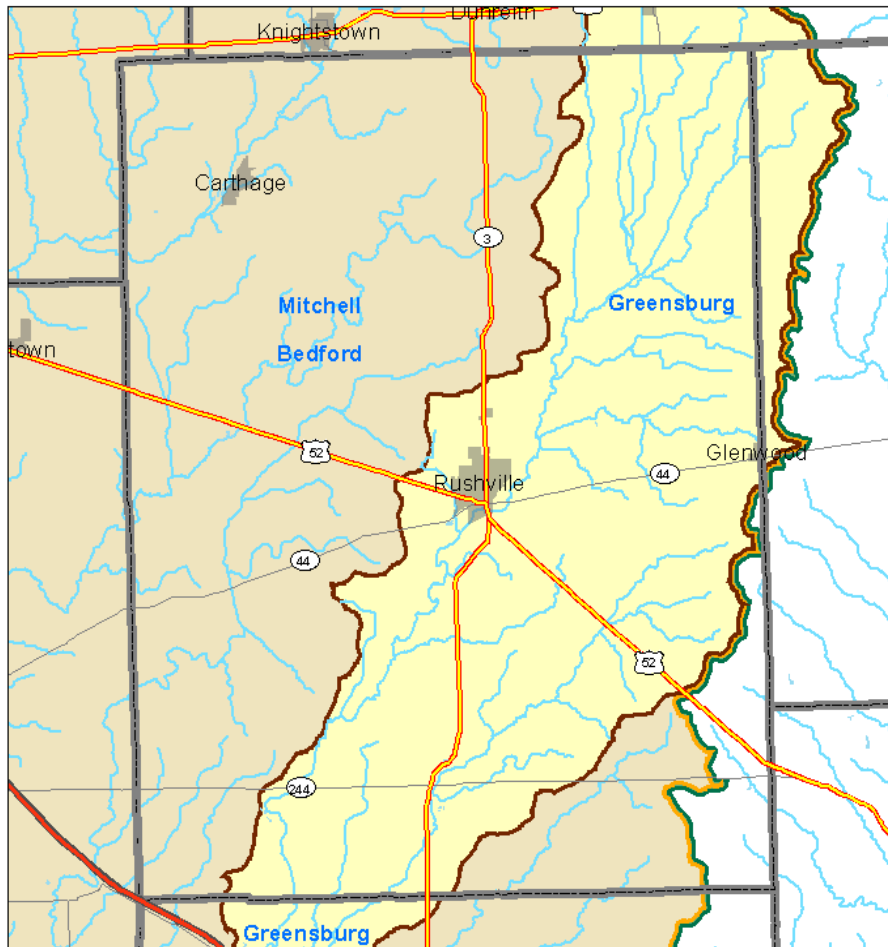
- Richmond (Indiana - American Water)
(Middle Fork Reservoir, Middle Fork of the East Fork of Whitewater River)
- Muncie (Indiana - American Water),
Indianapolis - White River North,
Indianapolis - White River
(White River)



Ripley County Watersheds Used for Public Drinking Water

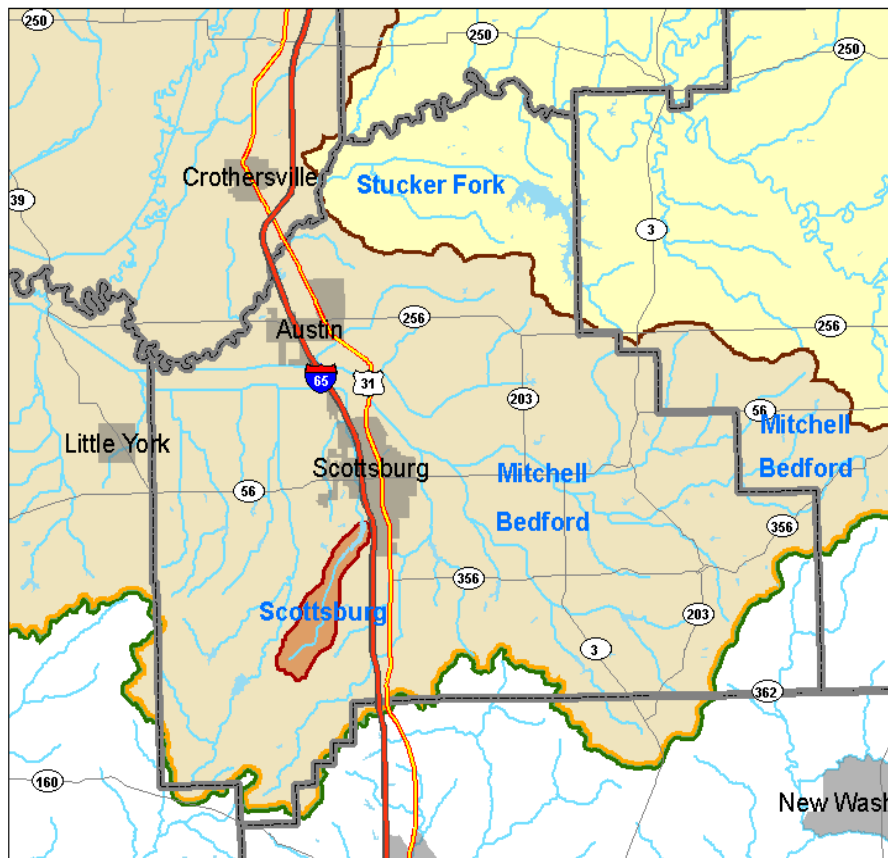
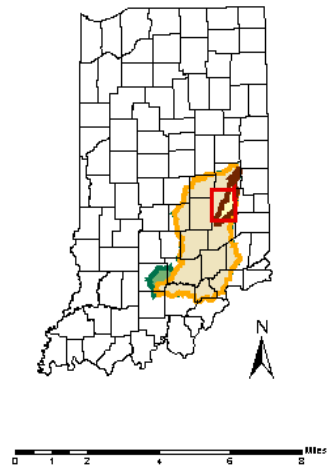
- Batesville Watershed
(Oser and Bischoff Reservoirs)
- Osgood Watershed (Laughery Creek)
- Versailles Watershed (Laughery Creek)
- Scottsburg - Stucker Fork Watershed
(Muscatatuck River)
- North Vernon (Muscatatuck River)
- Mitchell Watershed, Bedford Watershed
(East Fork White River)





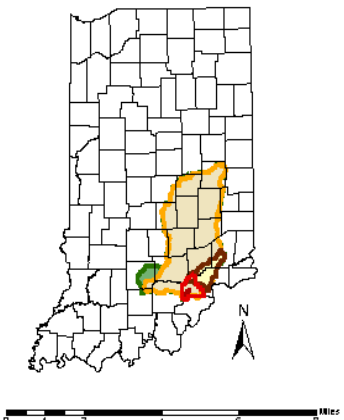
Rush County Watersheds Used for Public Drinking Water

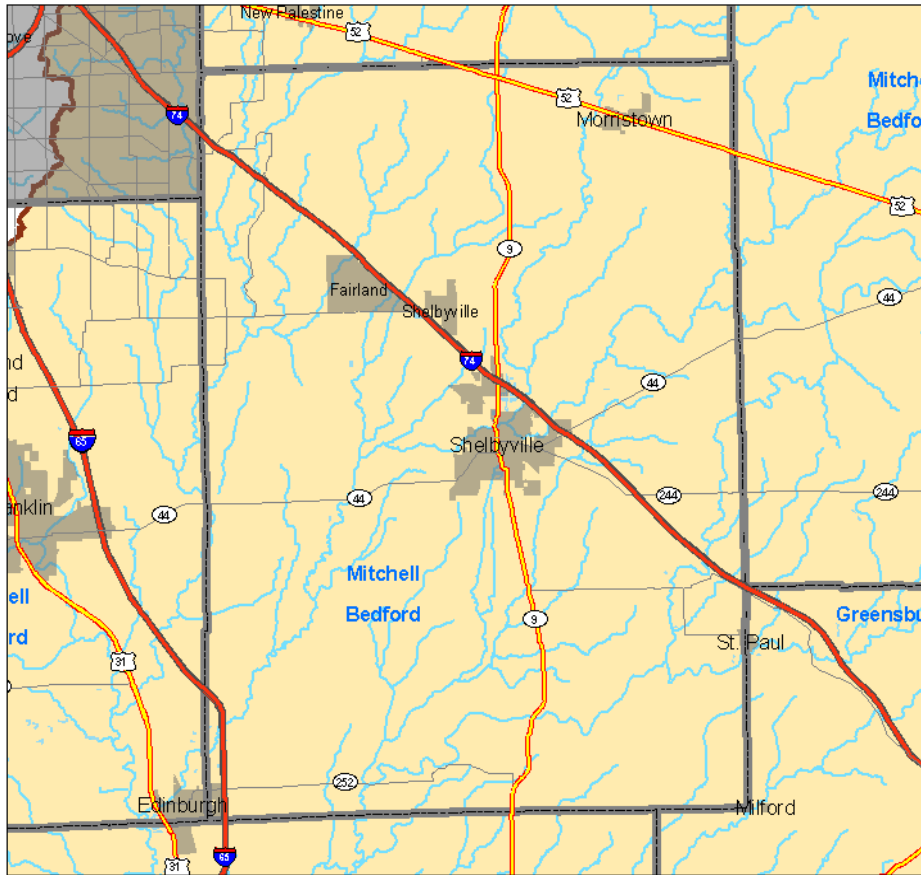
- Greensburg Watershed (Flatrock River)
- Mitchell Watershed (East Fork White River)
- Bedford Watershed (East Fork White River)




Scott County Watersheds Used for Public Drinking Water

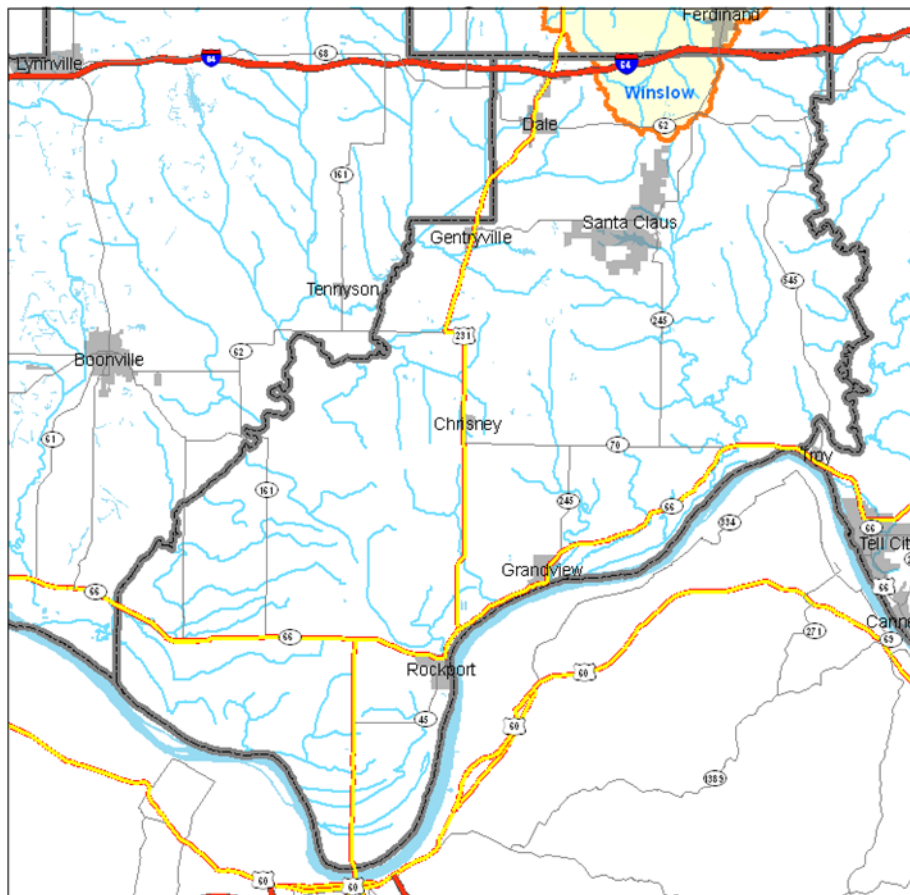
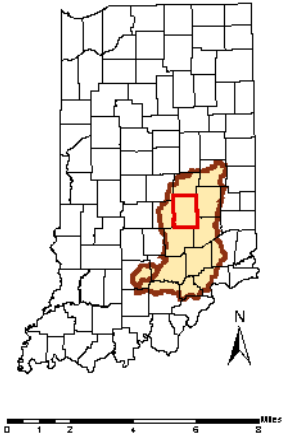
- Stucker Fork (Muscatatuck River)
- Scottsburg Water Department (Scottsburg Reservoir)
- Mitchell Watershed (East Fork White River)
- Bedford Watershed (East Fork White River)





Shelby County Watersheds Used for Public Drinking Water

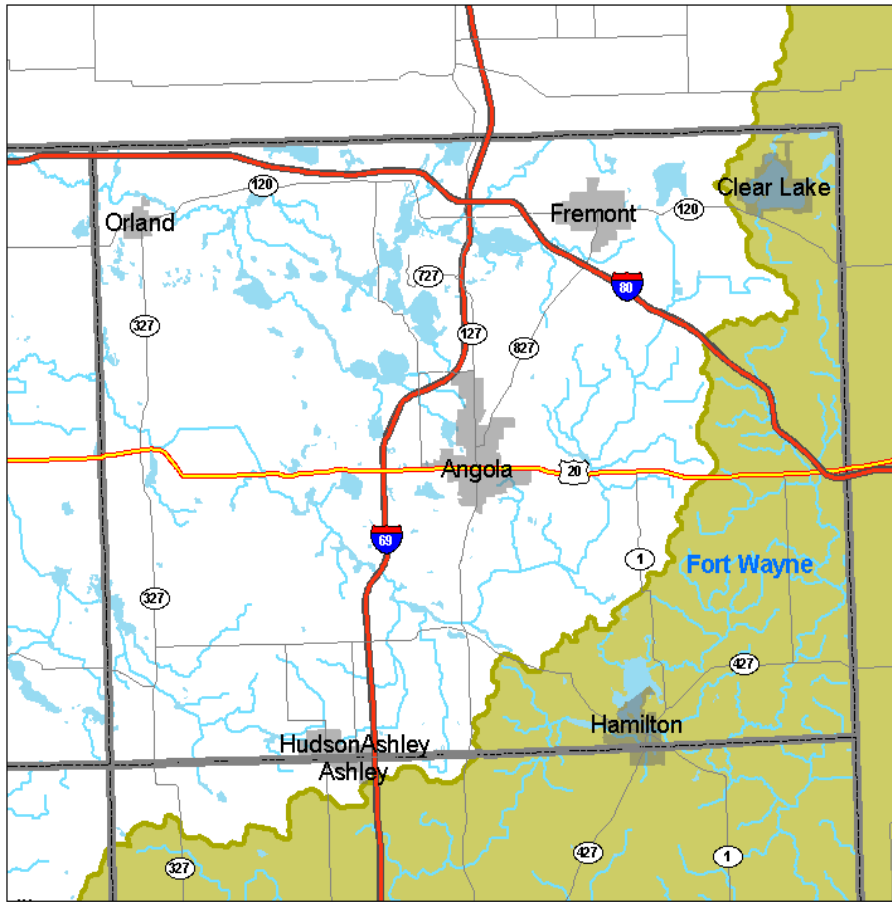
 Bedford Watershed, Mitchell Watershed (East Fork White River)



Spencer County Watersheds Used for Public Drinking Water

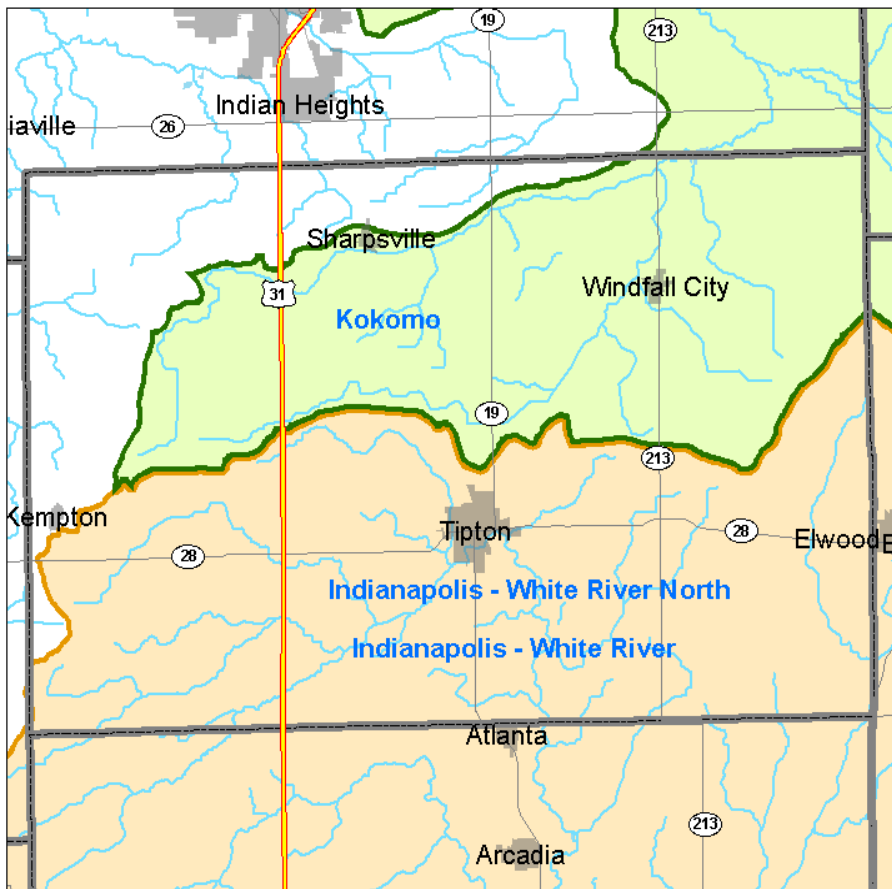
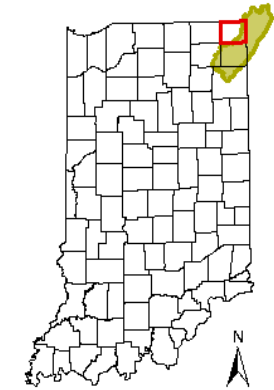
 Winslow Watershed (Patoka River)





Steuben County Watersheds Used for Public Drinking Water

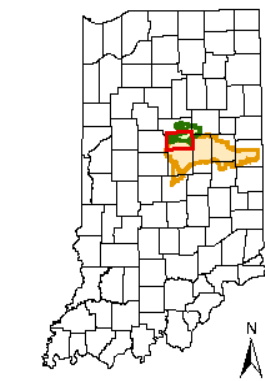
Fort Wayne - 3 Rivers Filtration Plant (St. Joseph River)

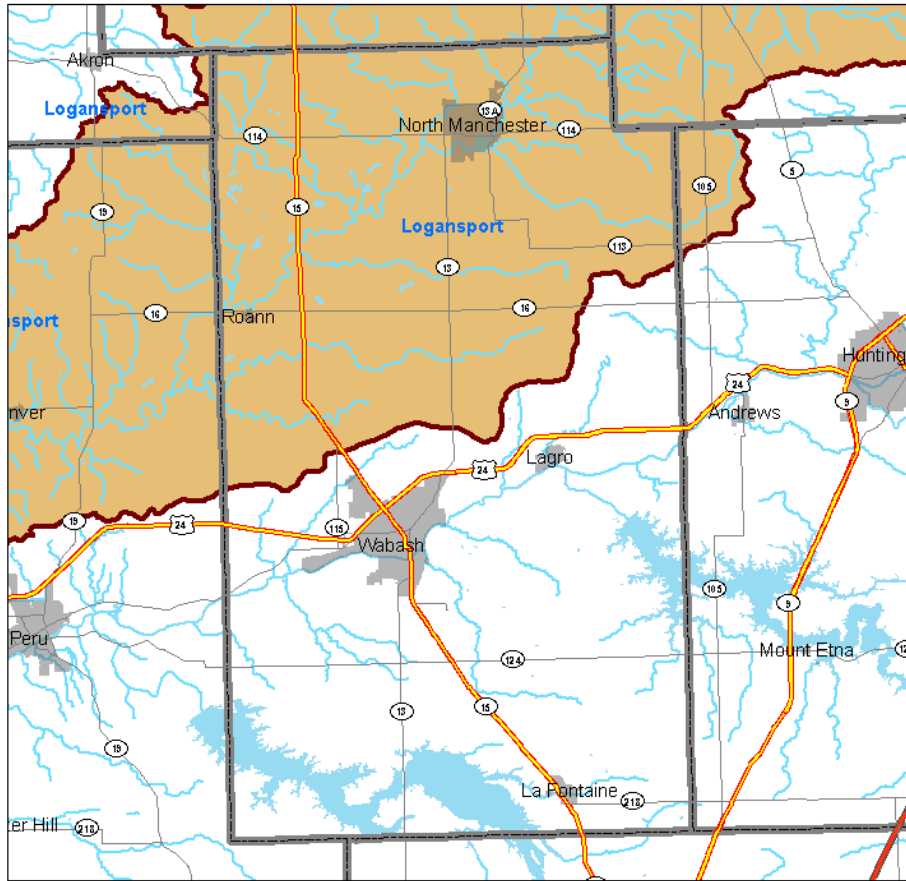


Tipton County Watersheds Used for Public Drinking Water

Kokomo (Indiana - American Water)

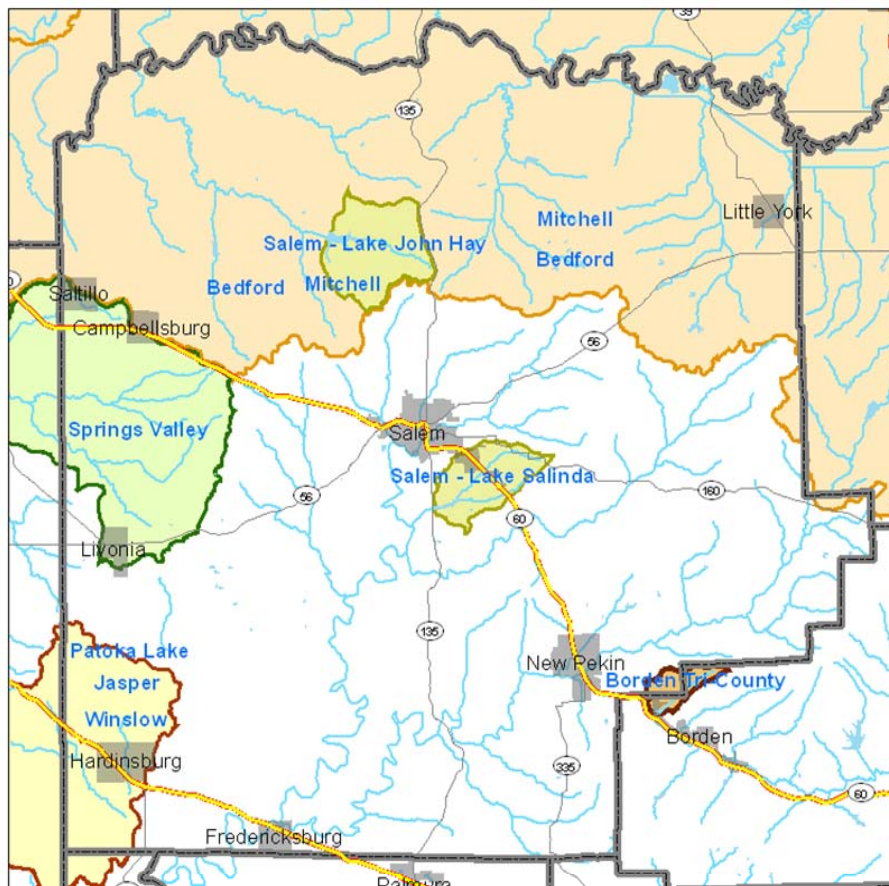
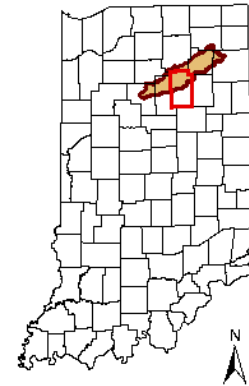
Indianapolis - White River North (White River)





Wabash County Watersheds Used for Public Drinking Water

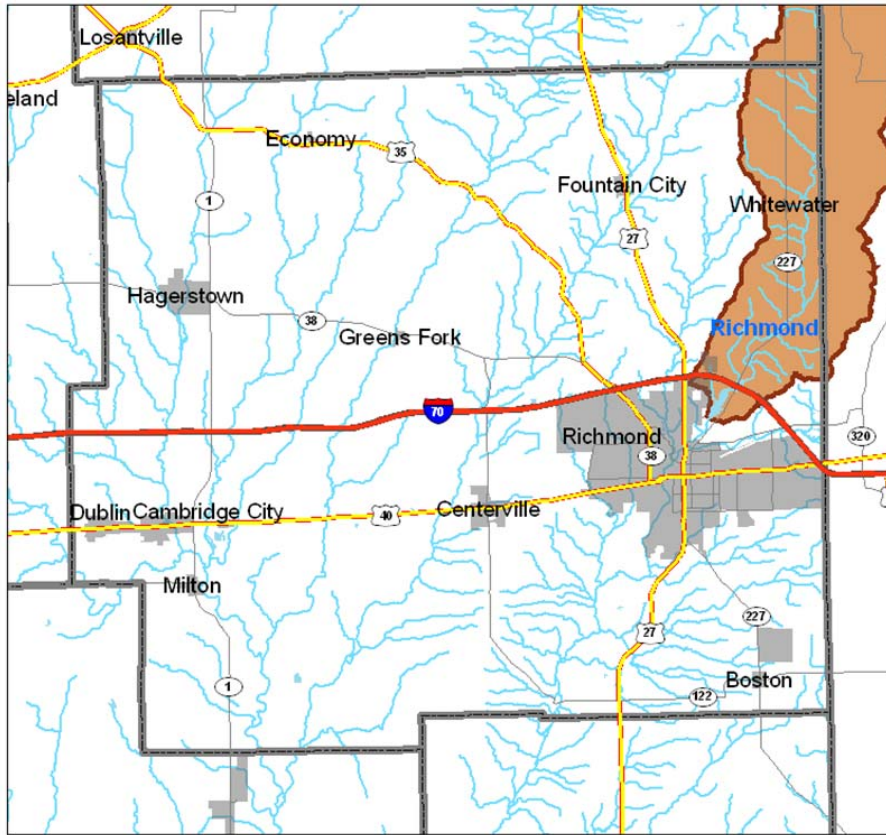
Logansport Watershed (Eel River)



Washington County Watersheds Used for Public Drinking Water

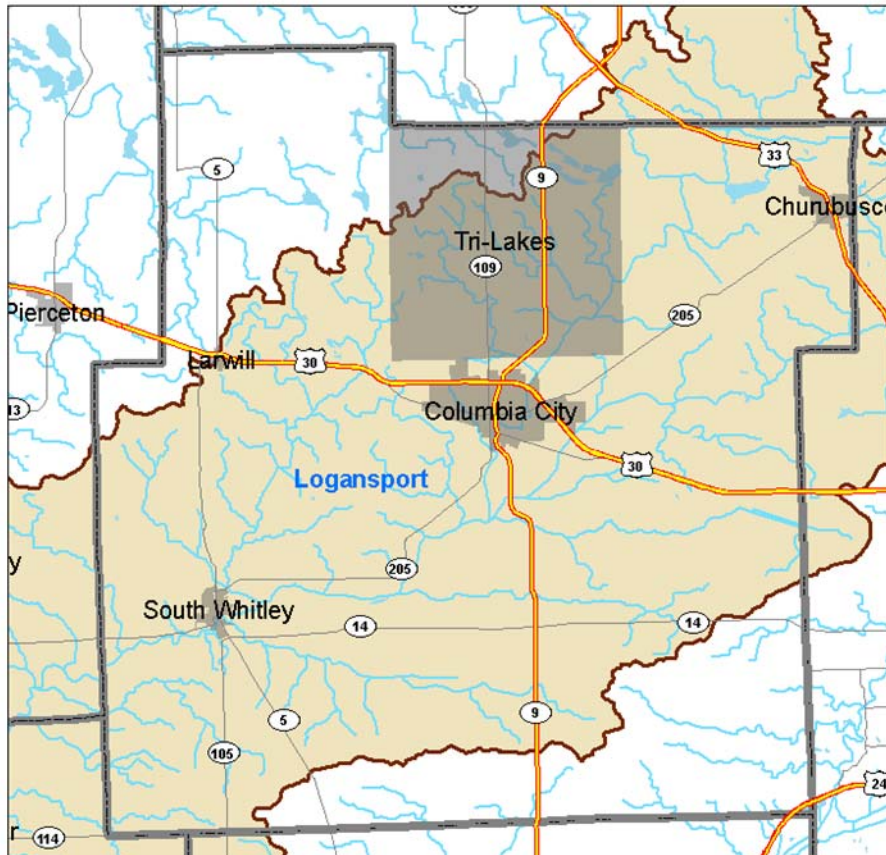
- Bedford Watershed, Mitchell Watershed (East Fork White River)
- Spring Valley Regional Water (Lost River)
- Winslow Watershed, Jasper Watershed (Patoka River)
- Patoka Lake Regional Water (Patoka Reservoir)
- Borden Tri-County Region (Packwood Lake)
- Salem Watershed (Lake John Hays, Lake Salinda)





Wayne County Watersheds Used for Public Drinking Water

Richmond (Indiana - American Water)
(Middle Fork Reservoir, Middle Fork of the East Fork of Whitewater River)



Whitley County Watersheds Used for Public Drinking Water

Logansport Watershed (Eel River)

