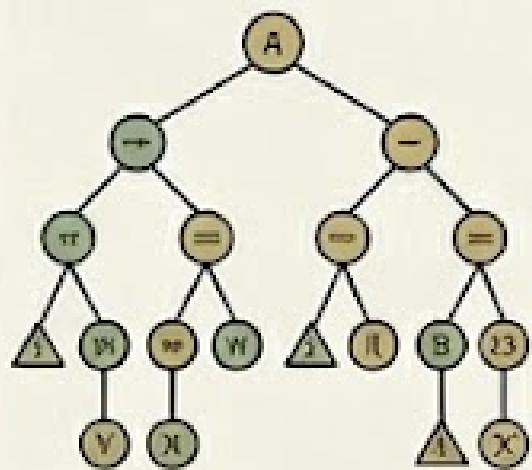


# HANDS-ON INTRODUCTION TO ARTIFICIAL INTELLIGENCE

**Course Overview:** A Comprehensive AI Primer focusing on key principles and practical application. Bridging concepts to real-world impact across all fields, including agriculture and life sciences, this course equips you with a solid fundamental understanding of AI to leverage in your research and career.

## FOUNDATIONS & REASONING

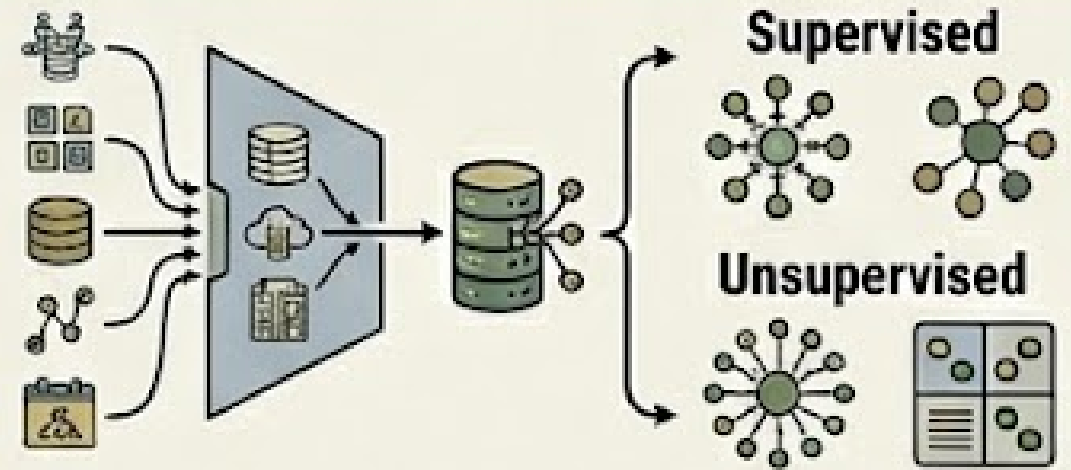


Logic Trees



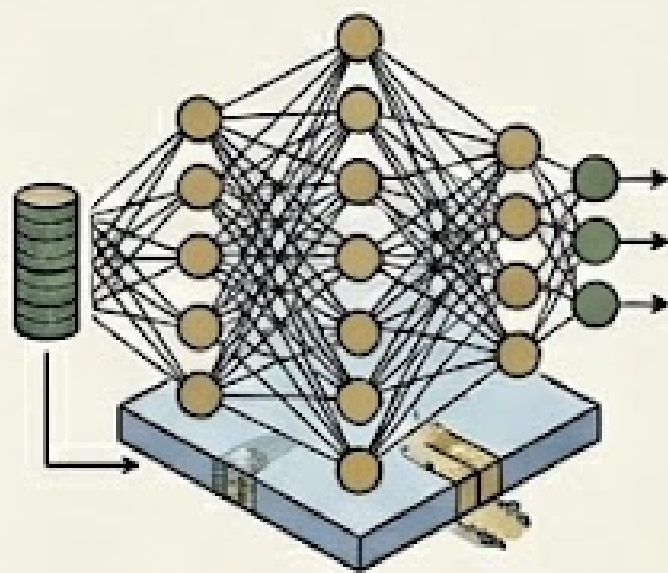
Constraint Problems

## DATA-DRIVEN MACHINE LEARNING

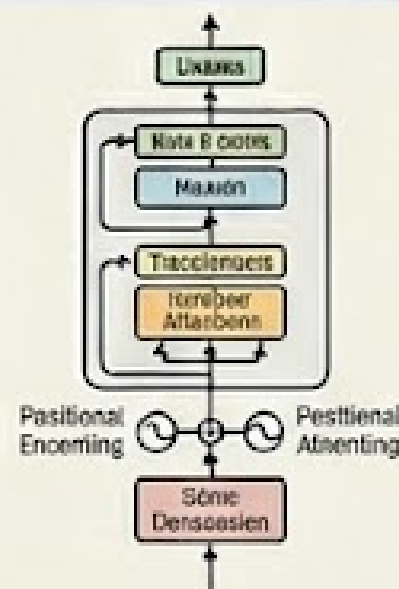


Data Processing ML Types Classification models

## NEURAL NETWORKS & DEEP LEARNING

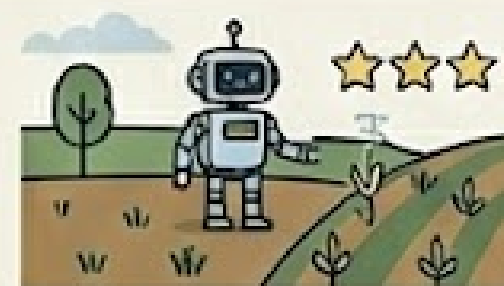


Deep Architectures

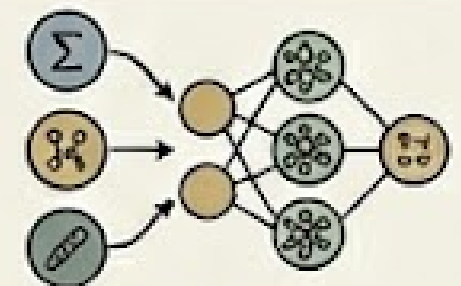


Transformers

## ADVANCED AI PARADIGMS



Agents & Rewards



Symbolic Integration

## Schedule

**Credits: 3**

**Instructor: Upinder Kaur**

**Class:** Wednesdays and  
Fridays 3:30 to 4:20PM

**Lab:** Thursdays 3:30 to 5:20PM

*Open to Both Graduate and  
Undergraduate students across COE  
and COA*



FOR ALL FIELDS



MINIMAL  
CODING REQUIRED



PROJECT-BASED  
LEARNING