



From the Director:

The last month has hummed with activity. As most of you are aware, PI4D held a student symposium on August, 10th, and we could not be more pleased with the participation. For those who registered to attend, we will be sending out the slides presented by Dr. Perry Kirkham as a resource for you to use when looking for fellowship and career development opportunities. Additionally, many of you are aware we had a poster competition. Congratulations to our winners who will be awarded a \$500 travel grant:

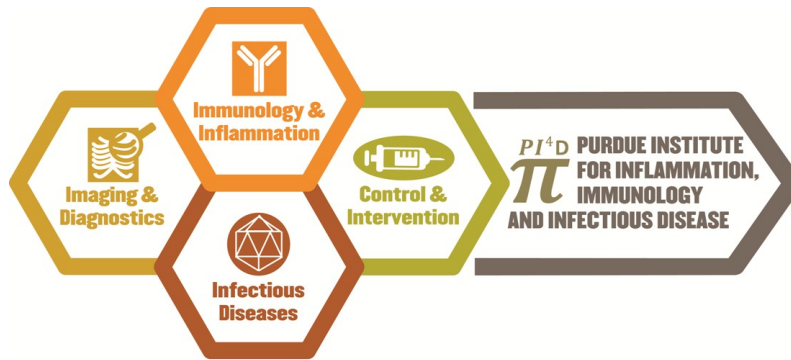
- **Delong Zhang**, Biomedical Engineering, Depth-resolved mid-infrared photothermal imaging of living cells and organisms with submicron spatial resolution
- **Leon Friesen**, Biomedical Engineering, Role of vitamin A signaling in regulation of T cells and colon cancer
- **Matthew Hostetler**, Chemistry, Design and Synthesis of Novel Antimicrobials Targeting Gram-positive Bacterial Pathogens
- **Yi Yang**, Biology, Thrombin-Dependent Pathways Drive Pancreatic Ductal Adenocarcinoma Disease

I also wanted to mention visits by Congresswoman Susan Brooks, as well as NIH Director, Dr. Francis Collins & Senator Joe Donnelly. All three were enthusiastic and interested in what we, as an Institute are pursuing, as well as supporting life science efforts at Purdue.

Finally, please mark November 11th, on your calendars for the PI4D Fall symposium - additional information will be forthcoming.

- Dr. Richard Kuhn
Director, PI4D

Want to leave your mark on PI4D? Design our new logo!



As you can see, the current PI4D logo incorporates the 4 program areas and the full name of the Institute - please reference for inspiration. We encourage incorporation of these components, but you are free, neigh encouraged, to use your imagination when designing this logo. Every logo submitted should be: 1. Legible, easy to decipher the letters and the name of the company. 2. Effective without color, looks good in black & white 3. Scalable. Works at 1 inch and 100 feet- has to legible and clear on business cards, pens, letterhead, etc. 4. Memorable

- Submissions are due to PI4D@purdue.edu by Midnight October 9th.
- Regardless of what you use to design the logo, please submit your design as an illustrator file
- PI4D owns the rights to the your submission.

The winner will be awarded at \$500 travel grant for use in representing themselves or Purdue in a professional capacity.

Congratulations Dr. Jiang

Congratulations to Dr. Wen Jiang (Biological Sciences; jiang12@purdue.edu) on being selected as a Showalter Faculty Scholar. The Showalter Faculty Scholars are selected from among the University Faculty Scholars whose work is in the life sciences. This is a wonderful recognition of Wen's emergence as an outstanding scholar here at Purdue. Congratulations Wen!



Patent Basics



PATENT BASICS

What Every Inventor Should Know

Thursday, September 15, 2016

10:30 A.M. to 2:30 P.M.

131 DLR

Session 1 – Patents (for Beginners)

10:30 A.M. to 12 P.M.

Topic

Covering patent basics (what, why, how) and information about filing provisional patent applications

Audience

Undergrads, independent inventors, people just getting started

Session 2 – Patents (for Experts)

1 to 2:30 P.M.

Topic

Digging into the more complicated issues of patentability and commercialization, including discussion of biological and pharmaceutical patents, international patents, and more

Audience

Faculty, researchers, entrepreneurship professionals



This event is supported in part by the United States Patent & Trademark Office (Midwest Regional Office), Purdue University Libraries and the Burton D. Morgan Center for Entrepreneurship

OTC Opportunities

Trask Innovation Fund:

The Fall Trask deadline will be September 23. If you are new to Trask: “The Fund objective is to support short-term projects that will enhance commercial value of Purdue University intellectual property assets. Financial support is designed to provide an individual technology portfolio up to \$50,000 for a period of six months.” Please let me know if you have any questions.

Central Collaboratory 2016 (<https://ctsi.mcw.edu/event/central-collaboratory-2016/>)

This is an “elevator pitch” event to “promote licensing, collaboration, or start-up team formation” in the fields of: therapeutics, diagnostics, devices, imaging, and manufacturing/engineering. If you are interested, I would be glad to participate as a co-presenter or a sounding board for preparing your pitch. The deadline for submissions is September 5, and the competition is October 6 in Milwaukee. Industry business development representatives will be in attendance. Please coordinate with me if you are considering applying.

INTRODUCTION TO CUSTOMER DISCOVERY FOR CLINICAL & TRANSLATIONAL SCIENCE

A TRAINING PROGRAM TO MOVE IDEAS OUT OF THE LAB AND INTO THE MARKET



PRESENTED BY
AND



LOCATION: REGENSTRIEF INSTITUTE,
IN INDIANAPOLIS

APPLICATION DEADLINE: SEPTEMBER 12

PRE-PROGRAM WEBINAR: SEPTEMBER 28, 12-1 PM

KICK-OFF SESSIONS: OCTOBER 13-14

WEEKLY MANDATORY COACHING SESSIONS WILL BE HELD DURING THE WEEKS OF OCTOBER 24 AND 31

CLOSING SESSION: NOVEMBER 11

Introduction to Customer Discovery offers a customized I-Corps curriculum to help participating researchers discover the commercial potential of their technology.

WHO SHOULD PARTICIPATE ?

UNIVERSITY RESEARCHERS:
FACULTY
POST-DOCTORAL AND GRADUATE (PHD) RESEARCHERS

HOW DO I START ?

Submit your application by Monday, September 12 via:
www.krannert.purdue.edu/centers/nsf/I-Corps-Midwest.php
and/or contact

Matthew Lynall, Ph.D.
Purdue NSF I-Corps Site
mlynall@purdue.edu
(765) 496-6321



WHY PARTICIPATE ?

FACULTY

1. Experience an opportunity to explore the real-world impact of your research
2. Connect with a diverse group of researchers aligned around clinical and translational science
3. Increase your professional and personal network with people outside the university setting
4. This program qualifies you for participation in the NSF National I-Corps Program with \$50K grant funding
5. Learn from an experienced teaching and support team from the NSF National I-Corps program

GRAD STUDENTS AND POST-DOCS All of the Above PLUS!

6. Become more employable in industry, government or university settings
7. Explore an entrepreneurial career path
8. Develop your communication skills towards non-technical audiences



MIDWEST I-CORPS
NETWORK



Funding Opportunities

Opportunity	Award Amount	Deadline
NIH-NCI Small Grants Program for Cancer Research (NCI Omnibus R03)	Varies	February 28, 2016
NIH-NLM Information Resource Grants to Reduce Health Disparities (G08)	Varies	December 16, 2016

<u>ACS Institutional Research Grant for Junior Faculty</u>	30,000	September 30, 2016
<u>NIH-NCI RFI: Epidemiology Research on Novel Infectious Agents and Cancer Occurrence and Outcomes</u>	Varies	October 31, 2016
<u>NIH Biological Comparisons in Patient-Derived Models of Cancer (U01)</u>	Varies	September 14, 2016
<u>NIH Resource-Related Research Projects for Development of Animal Models and Related Materials (R24)</u>	Varies	September 25, 2016
<u>NIH Initiative to Maximize Research Education in Genomics: Diversity Action Plan (R25)</u>	Varies	September 25, 2016
<u>NIH The Role of Mobile Genetic Elements in Cancer</u>	Varies	October 5, 2016
<u>NIH Metabolic Reprogramming to Improve Immunotherapy</u>	Varies	October 5, 2016
<u>NIH Exploratory/Developmental Investigations on Primary Immunodeficiency Diseases (R21)</u>	Varies	October 16, 2016
<u>NIH Systems Approach to Immunity and Inflammation (U19)</u>	Varies	November 2, 2016
<u>NIH Big Data to Knowledge (BD2K) Enhancing the Efficiency and Effectiveness of Digital Curation for Biomedical Big Data (U01)</u>	Varies	December 15, 2016

Send us your images and news stories! Images and stories can be deposited [here](#), or email us at pi4d@purdue.edu

