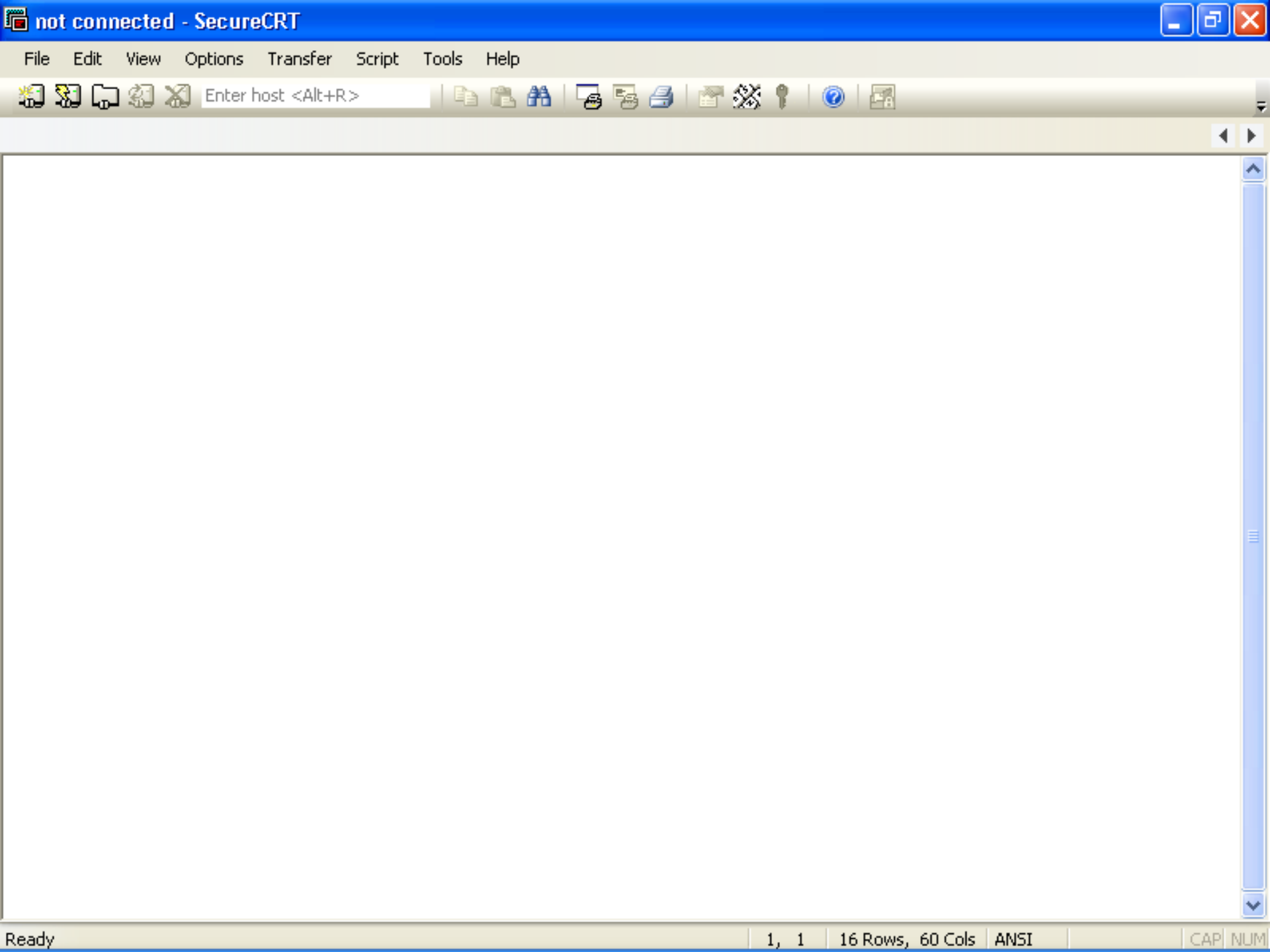
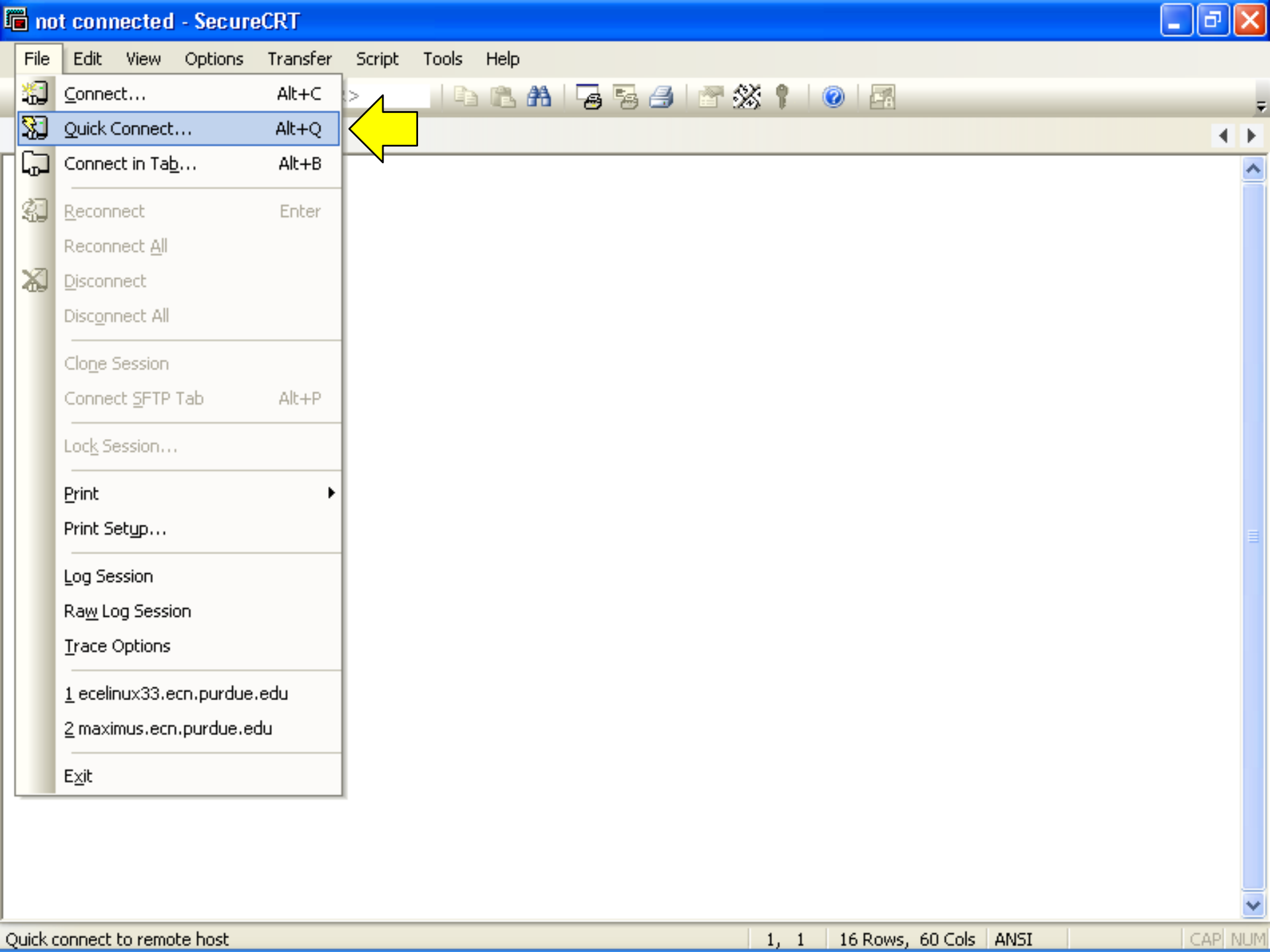


Enter an ECN Linux machine.





- Connect... Alt+C
- Quick Connect... Alt+Q
- Connect in Tab... Alt+B
- Reconnect Enter
- Reconnect All
- Disconnect
- Disconnect All
- Clone Session
- Connect SFTP Tab Alt+P
- Lock Session...
- Print
- Print Setup...
- Log Session
- Raw Log Session
- Trace Options
- 1 ecelix33.ecn.purdue.edu
- 2 maximus.ecn.purdue.edu
- Exit

Quick Connect

Protocol: SSH2

Hostname: ecelinux30.ecn.purdue.edu

Port: 22 Firewall: None

Username:

Authentication

- ☒ Password
- ☒ PublicKey
- ☒ Keyboard Interactive
- ☒ GSSAPI

Properties...

There are dozens of computers with different numbers. Don't always use ecelinux30. If everyone uses 30, it will be very slow. **Use different numbers.**

New Host Key



The host key database does not contain an entry for the hostname `ecelinux22.ecn.purdue.edu`, which resolved to `128.46.75.172`, port `22`. If you have received this message more than once for `ecelinux22.ecn.purdue.edu`, this may mean that `ecelinux22.ecn.purdue.edu` is an "alias" which resolves to different hosts.

It is recommended you verify your host key before accepting.

Server's host key fingerprint (MD5 hash):

`05:20:af:a9:b5:dd:5b:df:cb:f7:52:ce:76:62:35:99`

Accept Once

Accept & Save

Cancel

Enter Secure Shell Password



ece264c5@ecelinux22.ecn.purdue.edu requires a password. Please enter a password now.

OK

Cancel

Username:

ece264c5

Password:



Save password

```
Linux ecelinux22.ecn.purdue.edu 2.6.32-220.17.1.el6.x86_64 #1 SMP Thu Apr 26 13:
37:13 EDT 2012 x86_64 x86_64 x86_64 GNU/Linux
- Grader Jobs: http://eng.purdue.edu/ECE/AboutUs/Employment/grader.whml
- Reporting computer problems
  Please report computer problems via the ECN Trouble Report:
    https://engineering.purdue.edu/ECN/AboutUs/ContactUs/
[ece264c5@ecelinux22 ~]$
```

ecelinux22.ecn.purdue.edu (1) - SecureCRT

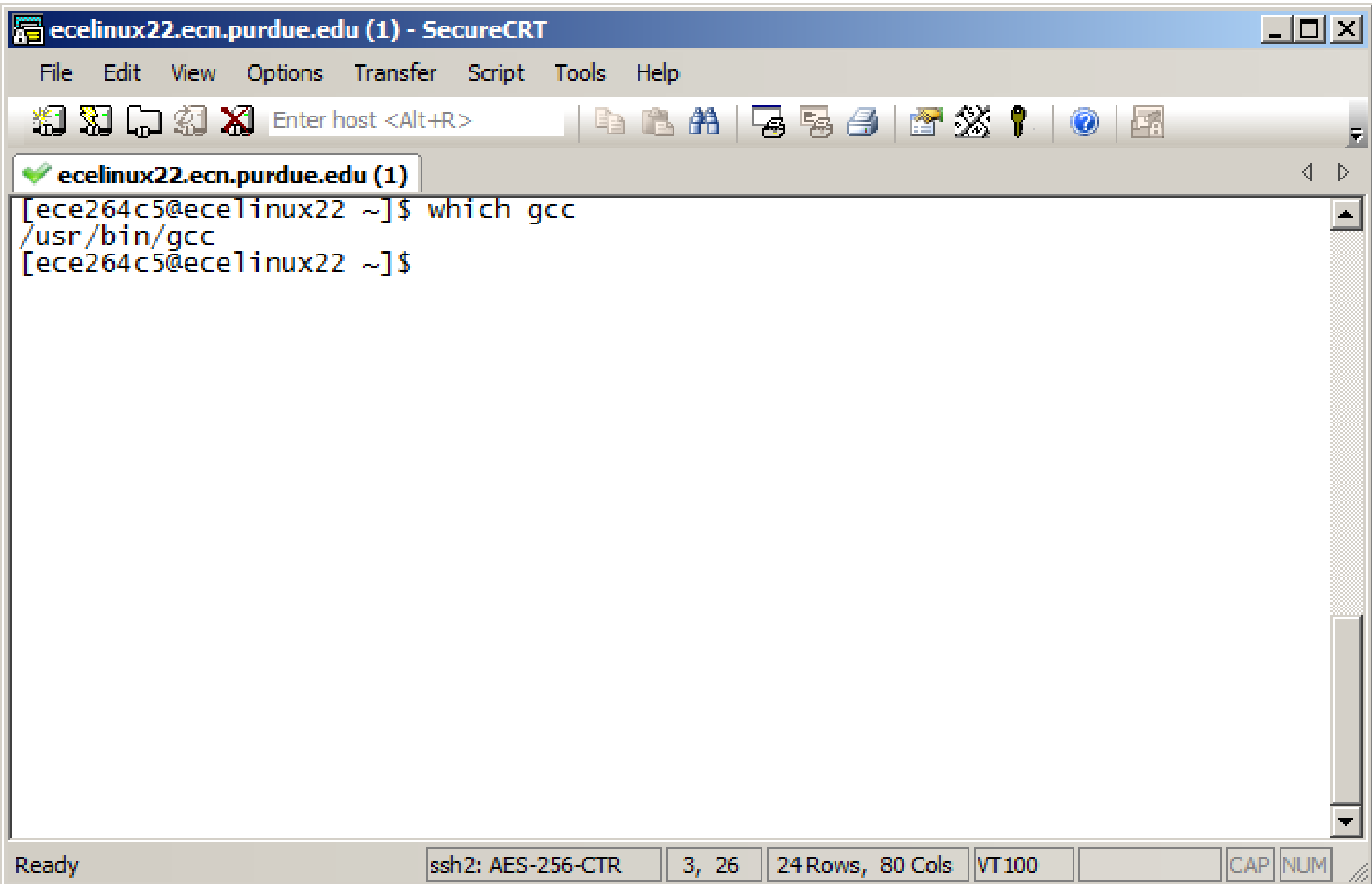
File Edit View Options Transfer Script Tools Help

Enter host <Alt+R>

ecelinux22.ecn.purdue.edu (1)

```
Linux ecelinux22.ecn.purdue.edu 2.6.32-220.17.1.el6.x86_64 #1 SMP Thu Apr 26 13:37:13 EDT 2012 x86_64 x86_64 x86_64 GNU/Linux
- Grader Jobs: http://eng.purdue.edu/ECE/AboutUs/Employment/grader.whml
- Reporting computer problems
  Please report computer problems via the ECN Trouble Report:
    https://engineering.purdue.edu/ECN/AboutUs/ContactUs/
[ece264c5@ecelinux22 ~]$ clear
```

Ready ssh2: AES-256-CTR 9, 31 24 Rows, 80 Cols VT100 CAP NUM



```
[ece264c5@ecelinux22 ~]$ emacs -nw prog1.c
```