

ECE 264

Advanced C Programming

SecureCRT and Linux

Remotely Execute Tools

Yung-Hsiang Lu
Purdue University,
West Lafayette, IN, USA

Purpose

- This course uses Linux. If you do not have a Linux machine at home, you can remotely use the Linux computers provided by ECN.
- If you have a Windows machine, you can remotely enter a Linux computer using SecureCRT.
- Some tools require opening windows on your local machine.
- This video shows how to set up the environment.

Steps

- Download and Install SecureCRT.
- Download and Install Cygwin.
- Start Xwin Server in Cygwin.
- Enter an ECN Linux machine.
- In SecureCRT, allow X11 Forwarding.
- Use the tools (DDD, emacs, ...)

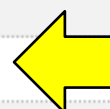
Download and Install SecureCRT.

[Home](#)[About Us](#)[Our People](#)[Services](#)[Support](#)[Schools](#)[Programs](#)**Information For...**[New ECN Users](#)[Technology Users](#)[ECN Staff](#)**Quick Links**[ECN Overview](#)[Trouble Report](#)[Site Specialists](#)[Knowledge Base](#)[Webmail](#)[WebCams](#)[Contact Us](#)**Trouble Rep**

- **Need Co**
- **Have an**
- **Request**

Announcem**Knowledge B****Today's Top Doc**

- > [Vi Text Editor: Tutorial](#)
- > [Javascript: Popup Calendar Control](#)
- > [Using ITaP Go Remote software to access OnePurdue Portal](#)

[Overview](#)[E-Mail](#)[Backups](#)[Software](#)[Computer Labs](#)[Online Tools](#)[Special Projects](#)[Web Hosting](#)[FTP Account Hosting](#)[Database Hosting](#)[SharePoint Services](#)[Campus Services](#)**ECN WebMail**

Username:

Password:

Server:

[Choose a mail](#)[Login](#)**Common Tas**

- > [Request an ECN](#)
- > [Request Compu](#)
- > [Check My Acco](#)
(MyECN)
- > [ECN Getting Sta](#)

Online Tools

Print-Friendly:

E-mail this Page:

**Services**[Overview](#)[E-Mail](#)[Backups](#)[Software](#)[Computer Labs](#)[Online Tools](#)[Special Projects](#)[Web Hosting](#)[FTP Account Hosting](#)[Database Hosting](#)[SharePoint Services](#)[Campus Services](#)

Software

Engineering Software

We support a wide variety of engineering software on servers and desktops in labs, office, and

If there is software you need to on your ECN supported computer you can [request software](#) online contact us form.

Software Downloads

[Antivirus and Security Software](#) (Purdue login required)

Security software provided to all Purdue users.

[Student Software Licenses](#) (Purdue login required)

Purdue has negotiated software license agreements with several vendors allowing students a reduced cost.

[Purdue University Software Downloads](#) (Purdue login required)

Purdue University licenses certain software products for installation by Purdue University affiliates (students, faculty, and staff) on Purdue owned computers. This page lists software that can be installed by Purdue students, faculty, and staff with a valid Purdue login and password.



You have asked to login to: <http://www.purdue.edu/securepurdue/login/index.cfm?location=/securepurdue/download/index.cfm>

PURDUE

UNIVERSITY™

Log in using your Purdue Career Account

Login:

Password:

Login

To access the page you are requesting, a valid Purdue University career account Username and Password must be provided.

[Forgot your password?](#)

Note: Unauthorized access or misuse of computer resources or disclosure of sensitive information may result in disciplinary or legal action. Read Purdue's [Acceptable Use Policy](#).



Secure Purdue

Google™ Custom Search

[Home](#) [Services](#) [Policies & Practices](#) [Downloads](#) [Resources](#)[Logout](#) | [Secure Purdue > Download](#)

Downloads

[McAfee Antivirus and other Security Software](#)[Antivirus Patches](#)[McAfee Daily DAT files](#)[Product Manuals](#)

Other Links

[McAfee Antivirus Software Help & General Information](#)[McAfee Threat Center](#)

Antivirus & Security Software

To ensure virus protection, be sure to download and install the latest McAfee patch from the [patch](#)

IMPORTANT NOTES:

1. Attention: McAfee VirusScan Enterprise Edition is now being used for both Non-Purdue (per equipment).
2. McAfee Personal Equipment PRODUCT SUPPORT GRANT NUMBER: 9112313-NET
3. To aid you in securely browsing from your personal machine, ITNS suggests that you install <https://www.siteadvisor.com>
4. Tripwire for Server users please note: Internet Explorer 6 SP2 may change the file extension issue in Internet Explorer. If you download a file and the extension is .tar, you should rename unzips correctly.

unzips correctly.

Download

Select Operating System

Windows XP

Number of Machines Product will be installed on

1

Email Address

yunglu@purdue.edu

1) The software may be installed and used only on computers owned, leased or controlled by Purdue University or by its faculty, staff and students.

2) The software may not be made available to persons or organizations not directly affiliated with Purdue.

I agree to the above terms



Download products





2. McAfee Personal Equipment PRODUCT SUPPORT GRANT NUMBER: 9112313-NET
3. To aid you in securely browsing from your personal machine, ITNS suggests that you install McAfee SiteAdvisor
<https://www.siteadvisor.com>
4. Tripwire for Server users please note: Internet Explorer 6 SP2 may change the file extensions for .tgz to .tar! This is a known issue in Internet Explorer. If you download a file and the extension is .tar, you should rename it to .tgz to ensure that it unzips correctly.

Product

Help Download

McAfee AntiVirus

McAfee VirusScan Enterprise 8.8



Download

SSH, SFTP, and SCP Secure Clients

Secure CRT (32-bit)



Download

SecureCRT-SecureFX Combination (Purdue Custom) (32-bit)



Download

Downloads

[McAfee Antivirus and other Security Software](#)

[Antivirus Patches](#)

[McAfee Daily DAT files](#)

[Product Manuals](#)

Other Links

[McAfee Antivirus Software Help & General Information](#)

[McAfee Threat Center](#)

Antivirus & Security Software

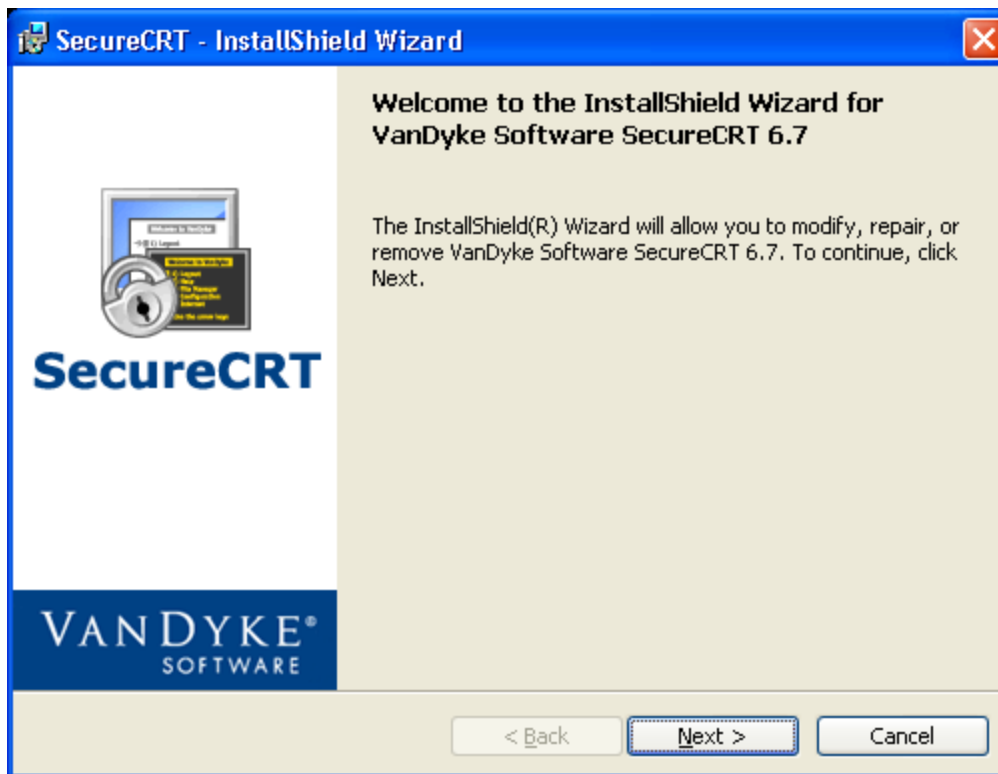
Platform: **Windows XP**

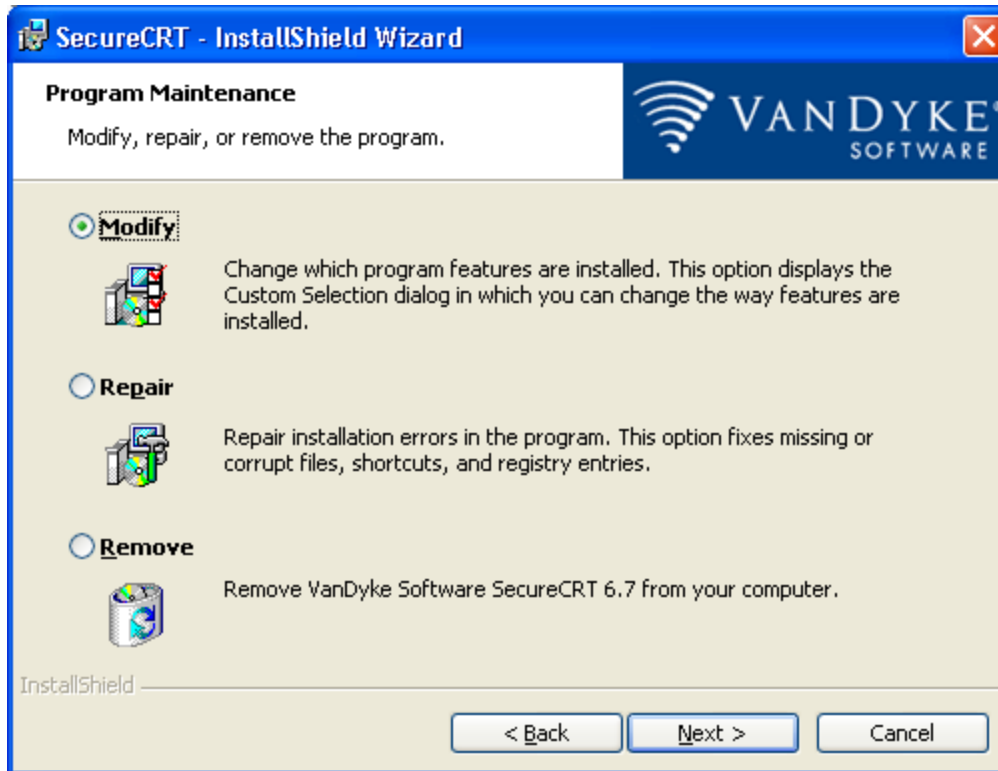
Product: **Secure CRT (32-bit)**

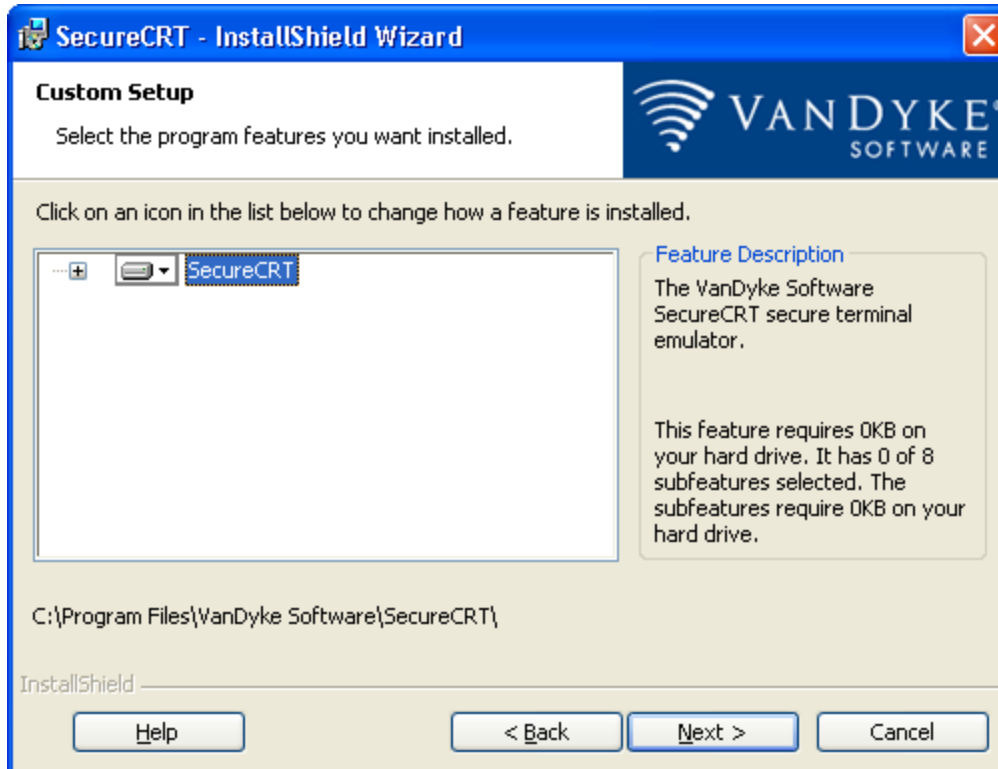


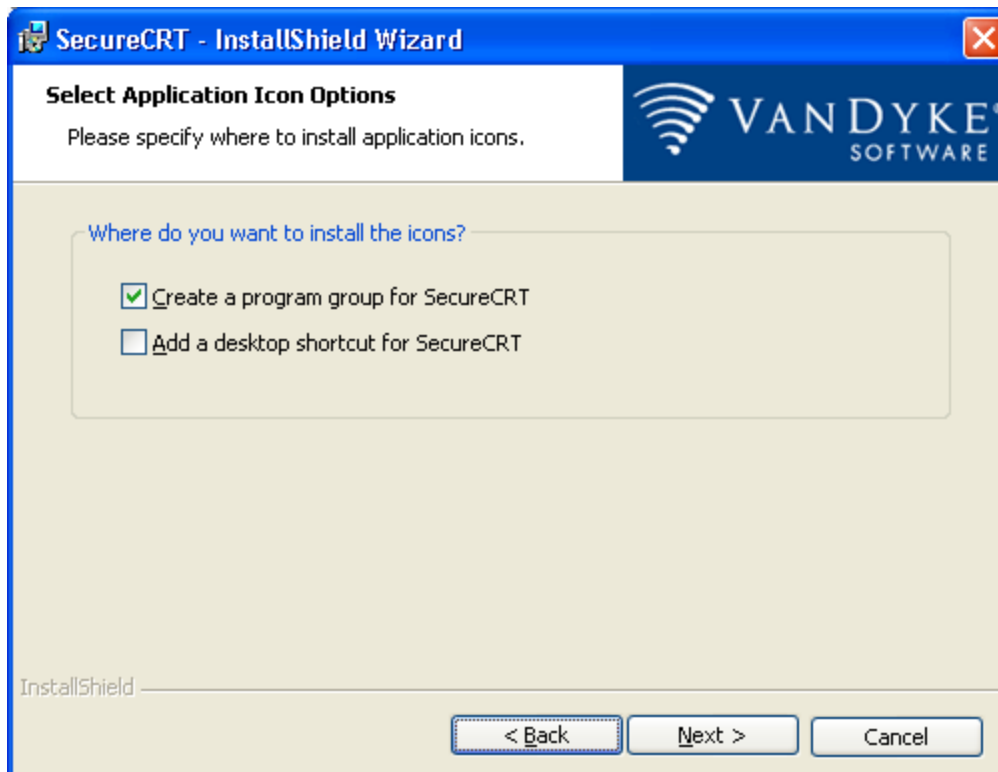
[Download scrt671-x86.exe](#)

[< Download another file](#)









Download and Install Cygwin.



Cygwin

Install Cygwin

Update Cygwin

Search Packages

Licensing Terms

Cygwin/X

Community

Reporting Problems

Mailing Lists

Newsgroups

Gold Stars

Mirror Sites

Donations

Documentation

FAQ

User's Guide

API Reference

Acronyms

Contributing

Snapshots

Source in CVS

Cygwin Packages

Cygwin

Get that [Linux](#) feeling - on Windows!

This is the home of the Cygwin project

What...

...is it?

Cygwin is:

- a collection of tools which provide a Linux look and feel environment for Windows.
- a DLL (cygwin1.dll) which acts as a Linux API layer providing substantial Linux API functionality.

...isn't it?

Cygwin is not:

- a way to run native Linux must rebuild your applice want it to run on Window
- a way to magically make aware of UNIX® functio Again, you need to build you want to take advanta

Cygwin

[Install Cygwin](#)[Update Cygwin](#)[Search Packages](#)[Licensing Terms](#)

Cygwin/X

Community

[Reporting Problems](#)[Mailing Lists](#)[Newsgroups](#)[Gold Stars](#)[Mirror Sites](#)[Donations](#)

Documentation

[FAQ](#)[User's Guide](#)[API Reference](#)[Acronyms](#)

Contributing

[Snapshots](#)[Source in CVS](#)[Cygwin Packages](#)

Cygwin

Get that [Linux](#) feeling - on Windows!

Installing and Updating Cygwin



Run [setup.exe](#) any time you want to update or install a Cygwin package. The [signature](#) for each package verify the validity of this binary using [this](#) public key.

When installing packages for the first time, `setup.exe` *does not install every package*. **packages** from the Cygwin distribution are installed by default. Clicking on categories at the `setup.exe` package installation screen will provide you with the ability to control what is installed. Clicking on the "Default" field next to the "All" category will provide you with the opportunity to select individual packages. Be advised that this will download and install hundreds of megabytes to your computer. It is probably better to click on individual categories and install either entire categories or packages themselves.

The latest net releases of the Cygwin DLL are numbered *1.n.x*, where "n" is currently "7". The version numbering refers only to the Cygwin DLL. Individual packages like *bash*, *gcc*, *le*

 Cygwin Setup



Cygwin Net Release Setup Program

This setup program is used for the initial installation of the Cygwin environment as well as all subsequent updates. Make sure to remember where you saved it.

The pages that follow will guide you through the installation. Please note that Cygwin consists of a large number of packages spanning a wide variety of purposes. We only install a base set of packages by default. You can always run this program at any time in the future to add, remove, or upgrade packages as necessary.

Setup.exe version 2.769

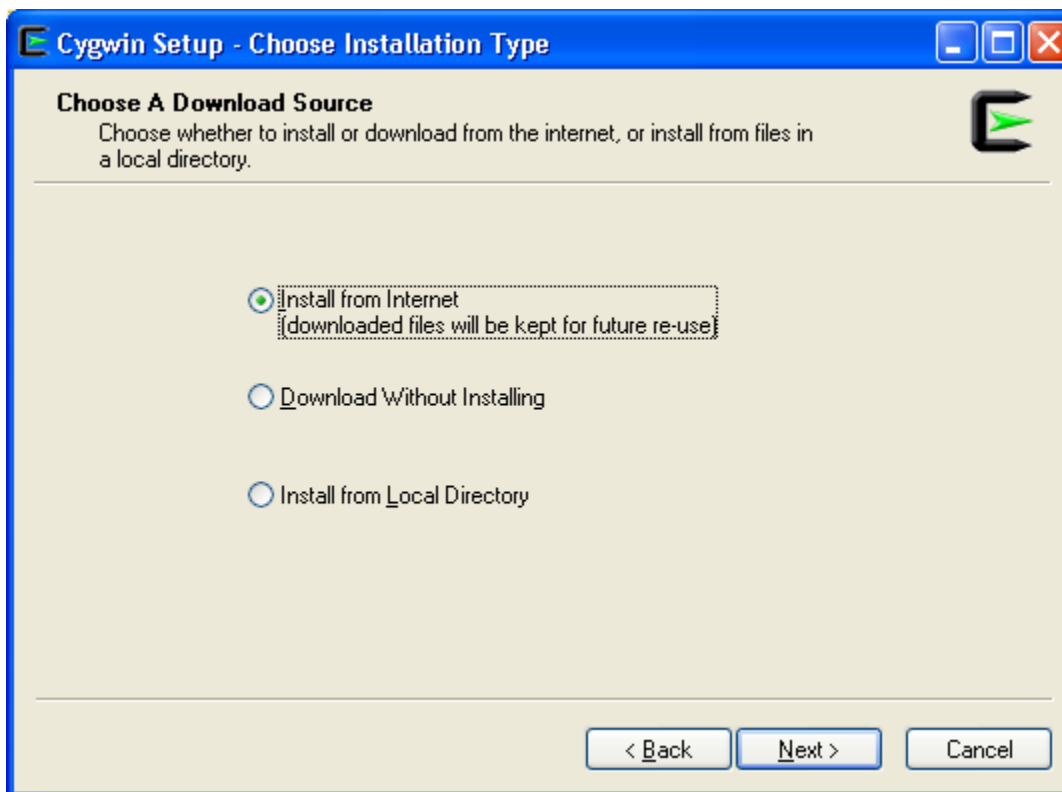
Copyright 2000-2012

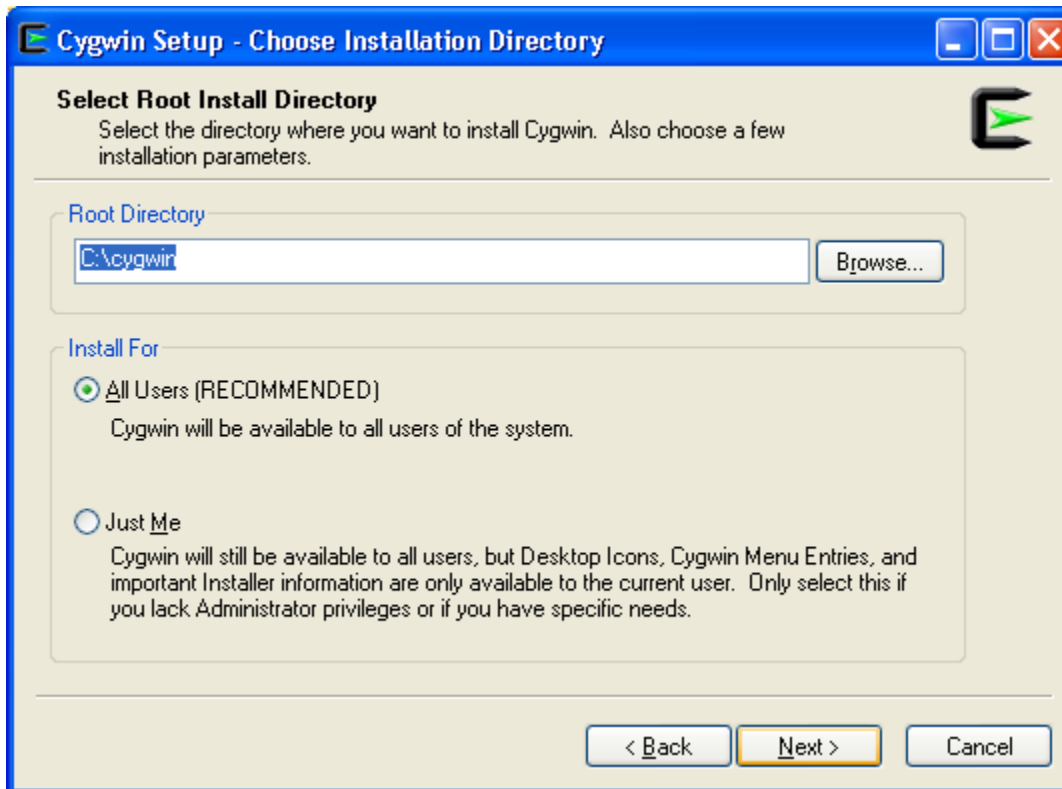
<http://www.cygwin.com/>

< Back

Next >

Cancel





Start Xwin Server in Cygwin.

yunlu

Internet
Internet Explorer

E-mail
Mozilla Thunderbird

Windows Update

Windows Media Player

Windows Journal

Get Going with Tablet PC

Microsoft PowerPoint

VirusScan Console

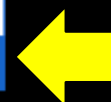
All Programs

start

- Business Software
- Security Panel Application
- Services & Support Software
- Set Program Access and Defaults
- Windows Catalog
- Windows Update
- Accessories
- Fujitsu Driver Update
- Games
- McAfee
- Microsoft Office
- Power Saving Utility
- Security Panel Application
- SharePoint
- Shock Sensor Utility
- Skype
- Startup
- Tablet PC
- Adobe Reader 8
- Get Going with Tablet PC
- Internet Explorer
- MSN
- Outlook Express
- Remote Assistance
- Sticky Notes

- Windows Journal
- Windows Media Player
- Windows Messenger
- Windows Movie Maker
- Google Chrome
- SecureCRT 6.7
- Dropbox
- Cygwin-X
- Camtasia Studio 5

- Editors
- Information
- Tools
- Toys
- bitmap
- oclock
- xbiff
- xcalc
- xclock
- xditview
- XLaunch
- xman
- xmh
- xterm
- XWin Server





Recycle Bin



Windows
Media Player



Internet
Explorer



Dropbox



Click Me!



Cywin
Terminal



Mozilla
Thunderbird



Camtasia
Studio 5



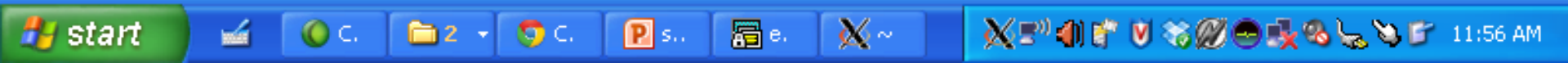
PortShutter



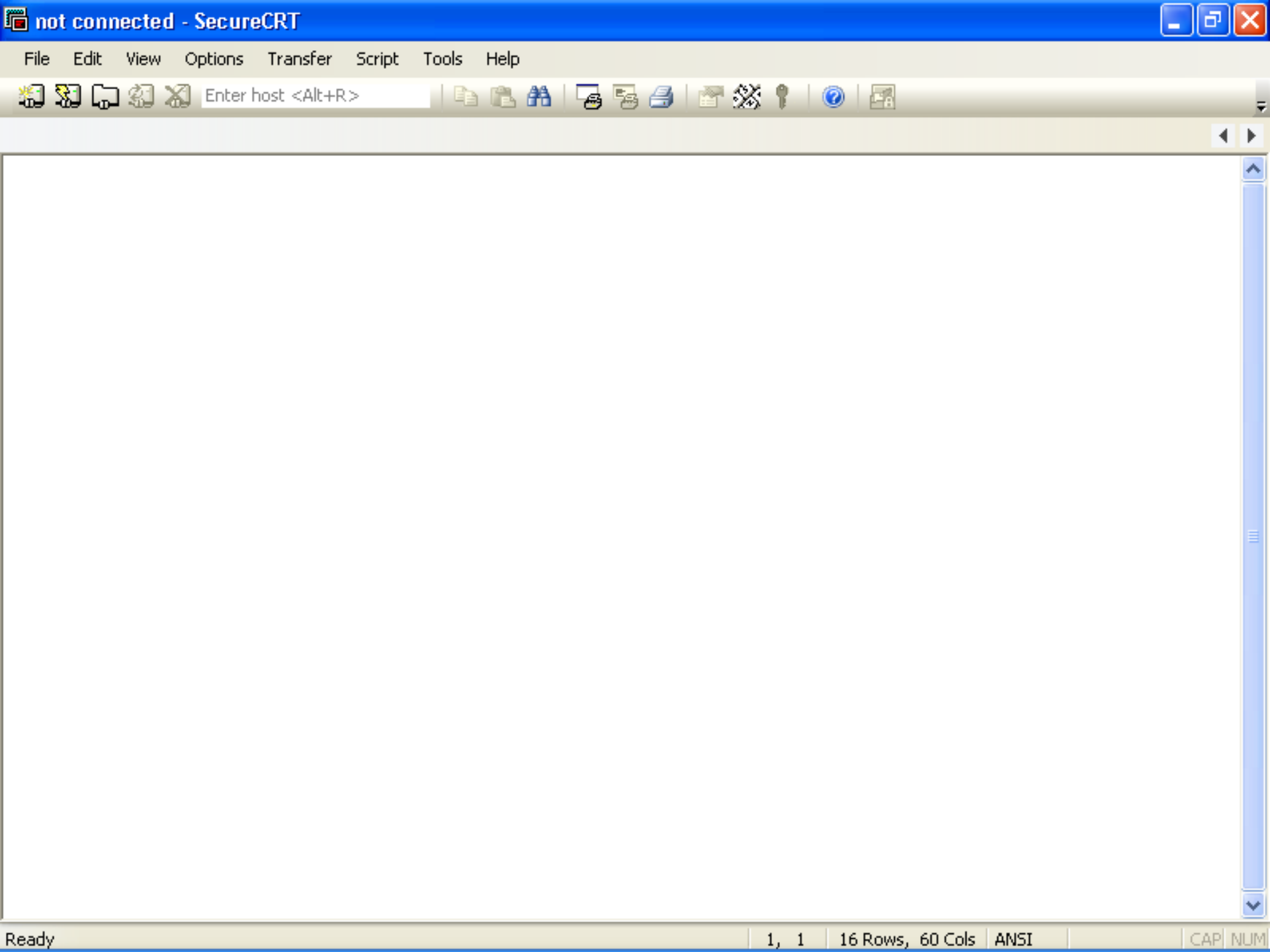
Skype

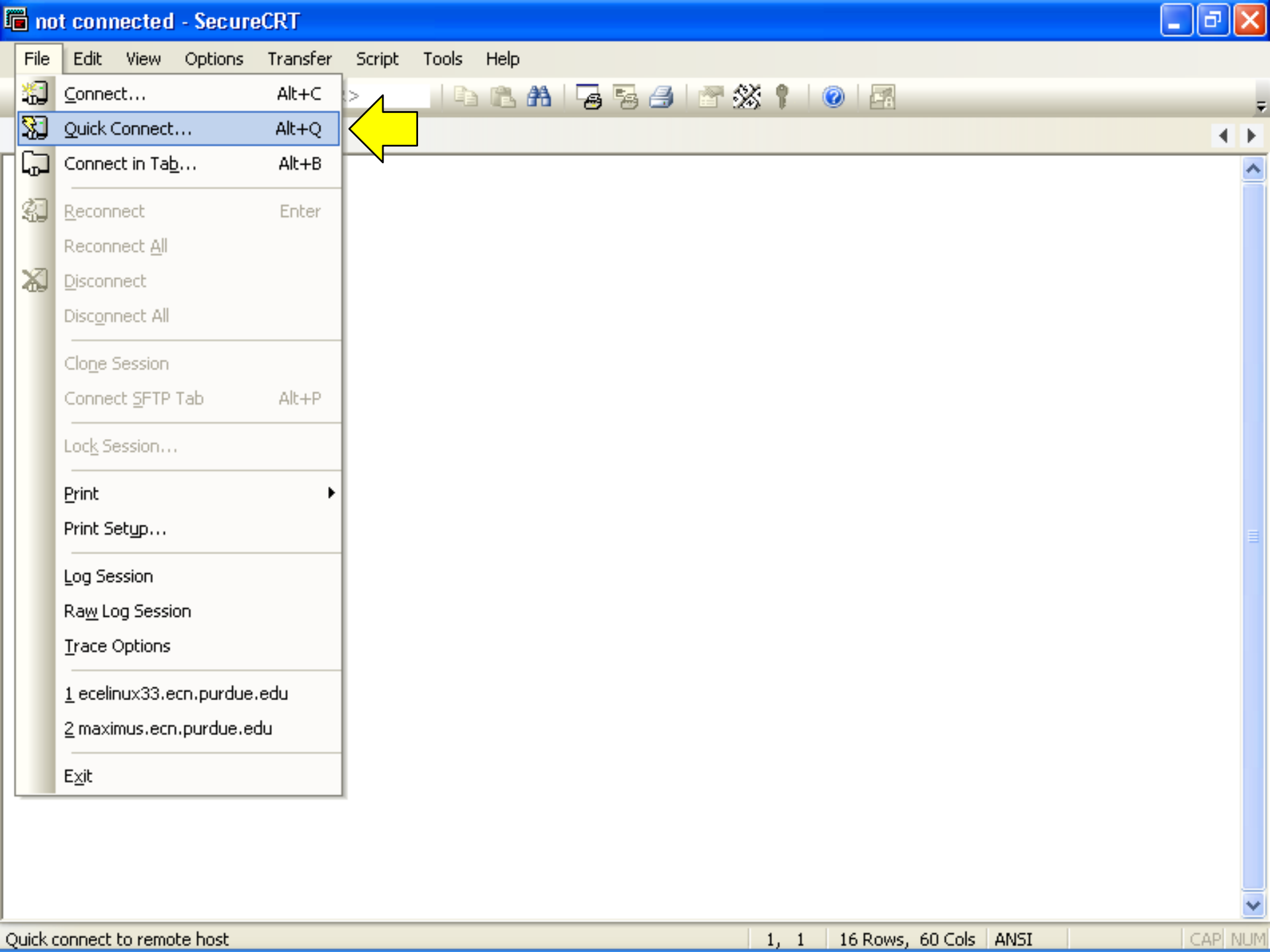


Google
Chrome

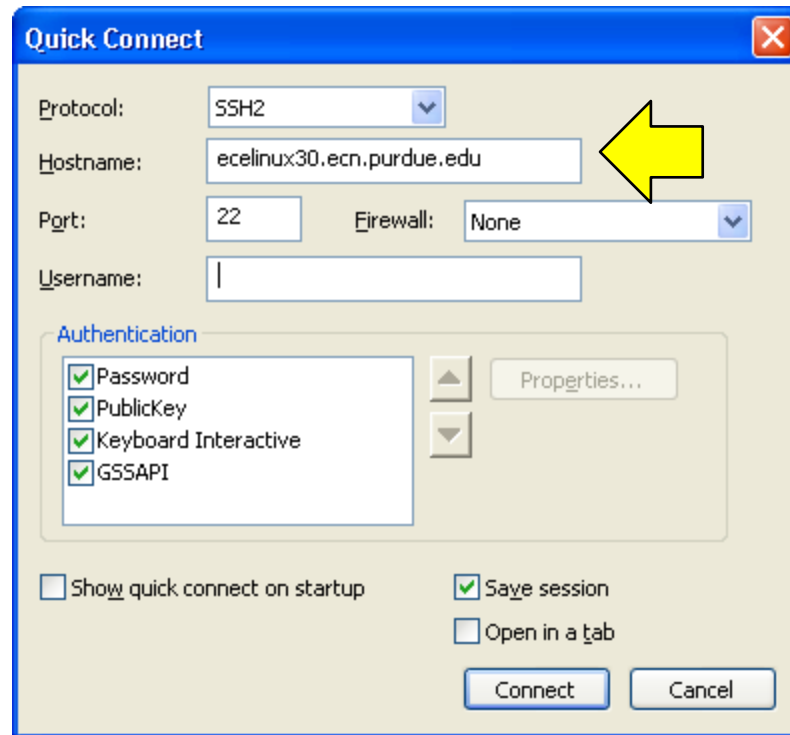


Enter an ECN Linux machine.



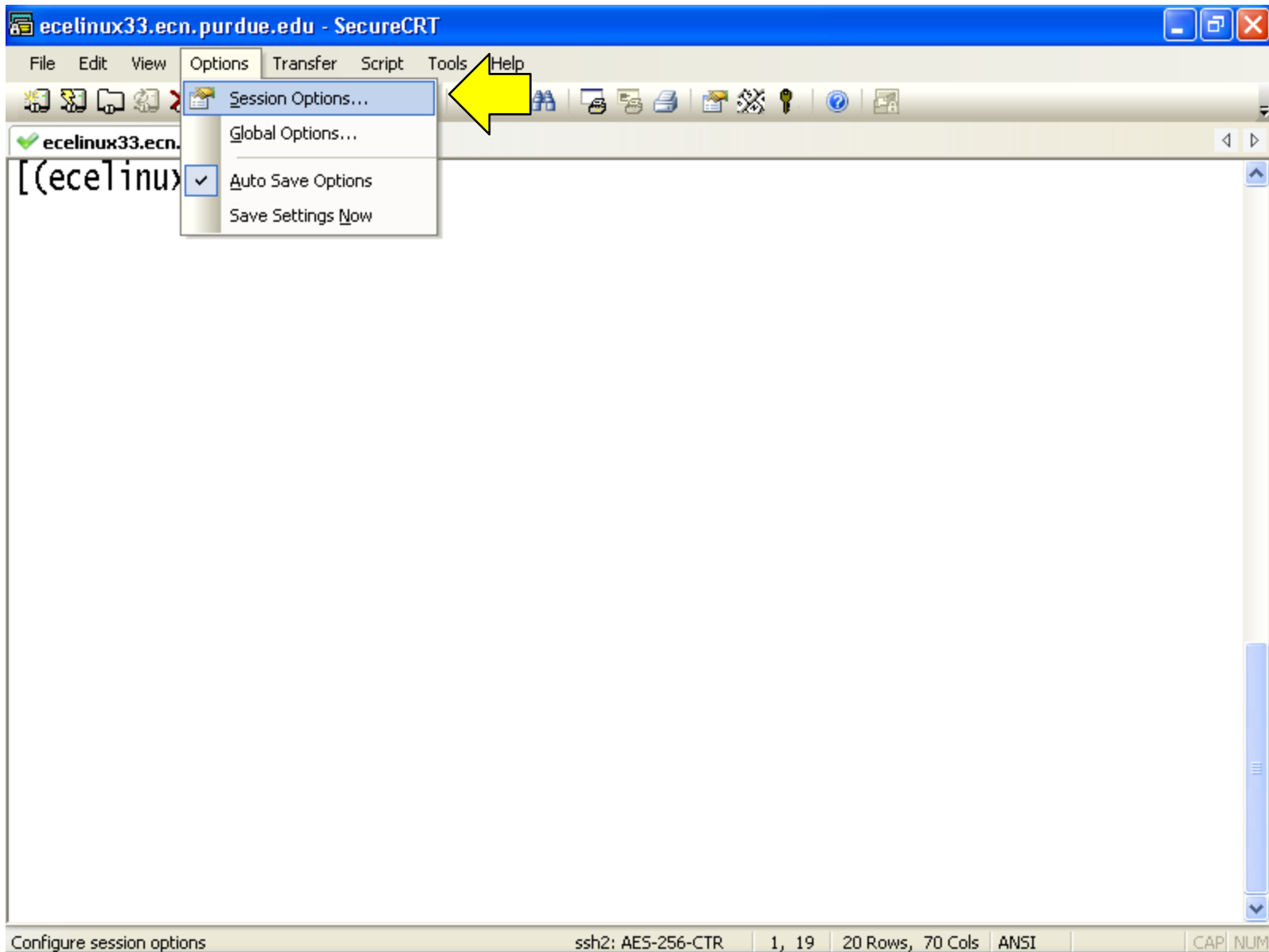


- Connect... Alt+C
- Quick Connect... Alt+Q
- Connect in Tab... Alt+B
- Reconnect Enter
- Reconnect All
- Disconnect
- Disconnect All
- Clone Session
- Connect SFTP Tab Alt+P
- Lock Session...
- Print
- Print Setup...
- Log Session
- Raw Log Session
- Trace Options
- 1 ecelix33.ecn.purdue.edu
- 2 maximus.ecn.purdue.edu
- Exit



There are dozens of computers with different numbers. Don't always use ecelinux30. If everyone uses 30, it will be very slow. **Use different numbers.**

**In SecureCRT, allow X11
Forwarding.**



Session Options - ecelinux33.ecn.purdue.edu



Category:

- [-] Connection
 - Logon Actions
 - [-] SSH2
 - SFTP Tab
 - Advanced
 - [-] Port Forwarding
 - Remote/X11**
- [-] Terminal
 - [-] Emulation
 - Modes
 - Emacs
 - Mapped Keys
 - Advanced
 - [-] Appearance
 - Window
 - Log File
 - Printing
 - X/Y/Zmodem

Remote Port Forwarding / X11 Forwarding

Remotely forwarded connections

Name	Remote Address	Local Host
<div>< [] ></div>		

Add...

Edit...

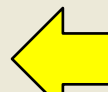
Delete

X11 forwarding

Selecting this option causes SecureCRT® to request that the remote machine forward X11 data to the X server running on the local machine.

☒ Forward X11 packets

☐ Enforce X11 authentication



OK

Cancel

Start DDD


```
[(ecelinux33) ~/] ddd &
```

```
[(ecelinux33) ~/] ddd &  
[1] 3113  
[(ecelinux33) ~/]
```

(): main



main

Copyright © 1995–1999 Technische Universität Braunschweig
Copyright © 1999–2001 Universität Passau, Germany.
Copyright © 2001 Universität des Saarlandes, Germany
Copyright © 2001–2004 Free Software Foundation, Inc.
(gdb) I