

# ***RAIL BUILDING SAFETY OVERVIEW***

**A Quick Reference Guide for Safety Topics  
For the Rail Building**

# *Building Contacts*

## In Case of Emergency - CALL 911 from any phone

- **Building Operations Manager:**  
Pam Graf, ME G044, 49-45654  
pgraf@purdue.edu
- **Assistant Building Deputy/Shipping Clerk:**  
Jacob Bailey, ME G044, 49-45654  
baile367@purdue.edu
- **Managing Director of Technical Services:**  
Michael Logan, ME 1200, 49-63742  
loganm@purdue.edu
- **Assistant Department Head, Facilities and Operations:**  
Jun Chen, ME 2145, 49-47050  
junchen@purdue.edu

# *Building Contacts - After Hours*

## After Hours Non-Emergencies Contact Information

**For non-emergency situations that are urgent and time sensitive, you can call the Purdue Police dispatch non-emergency number to get help after hours.**

- **Purdue Police**
  - **Non-Emergency Number: 494-8221**
  
- **If it is an emergency - DIAL 911**

# RAIL Building Emergency Plan

All users of the RAIL Building are expected to be familiar with the Emergency plan and complete an annual refresher quiz.

# *Purpose of the Building Emergency Plan*

**All Purdue Buildings are required to create and maintain an Emergency Plan.**

- What to do in case of Fire
- What to do in case the All-Hazards Siren goes off.
- Locations of severe weather shelters.
- Locations of AED's for Medical Emergencies.
- Emergency Contact Information

# *Location of the Building Emergency Plan*

**Users of the Rail Building are expected to read and review the Rail Emergency Plan**

- This presentation is merely a review of key points. It is important to review the entire RAIL Emergency Plan.

**You can find the Rail Emergency Plan on the Web**

- From the Campus Emergency Preparedness Website
  - <https://www.purdue.edu/epps/emergency-preparedness/emergency-plans/bep/>
- From the ME Homepage
  - <https://engineering.purdue.edu/ME/AboutUs/Safety>

# For All Emergencies Call.....



# *Evacuation Alarm - FIRE*

## **When the Fire Alarm Activates, Leave the Building Immediately using the Closest Available Exit**

- Do NOT continue working. Safely shut down any equipment and leave the area.
- Know the closest emergency exit. Be aware of alternative exit points in case the primary exit is blocked.
- Proceed to the Emergency Assembly area
  - Loading Dock area of the ME Building
- Do NOT re-enter the building until cleared to do so by a uniformed officer (Police or Fire)





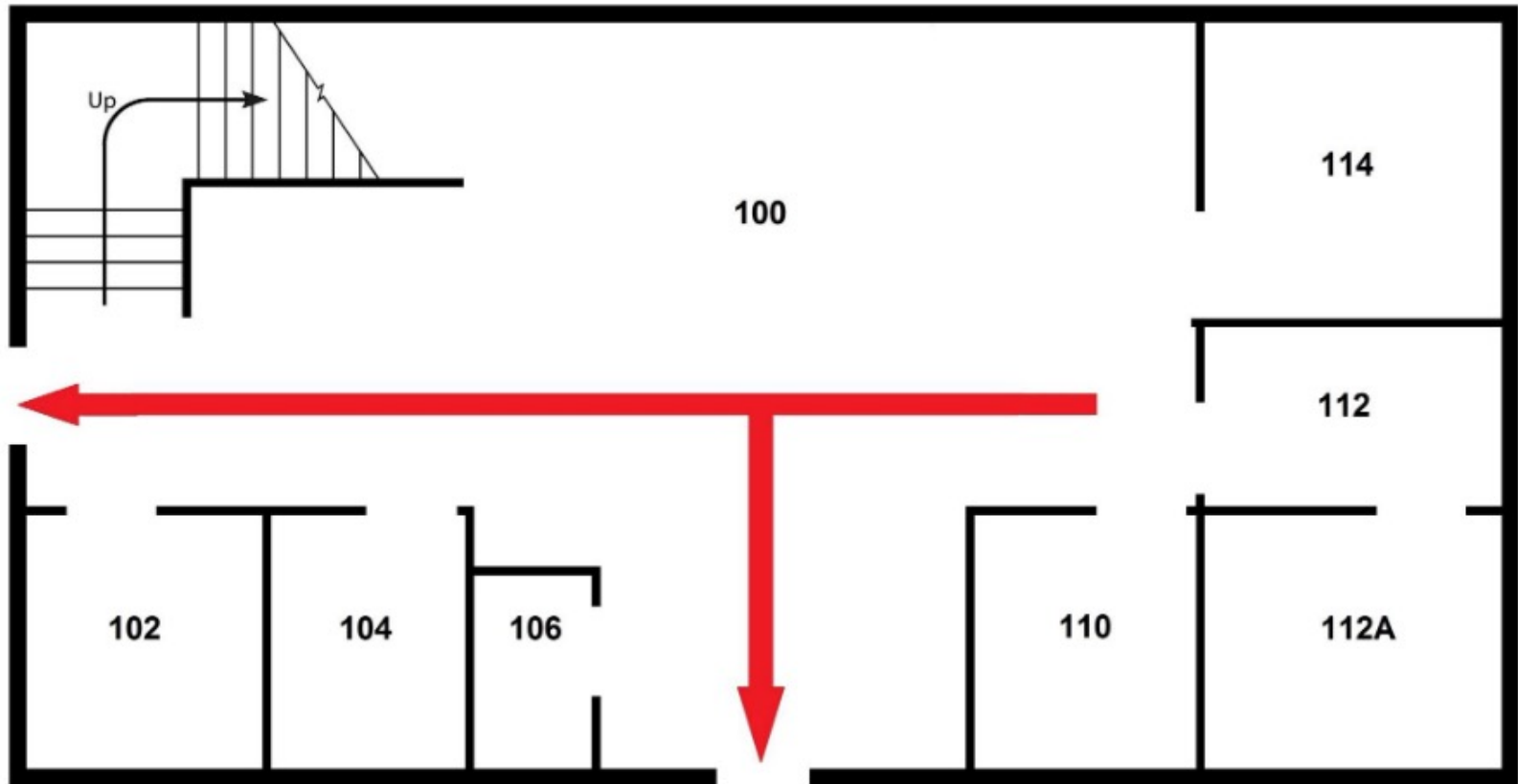
# Evacuation Alarm - FIRE


## To Activate the Fire Alarm, use a Pull Station

- This WILL turn on all the Fire Alarm system and evacuate the building. You CANNOT reset this once activated.
- The Fire Department will respond to this action.
- Once you have left the building, Call 911 to report the activation and provide additional details to emergency responders.
- Proceed to the Emergency Assembly area
  - Loading dock area of ME Building



# Evacuation Routes

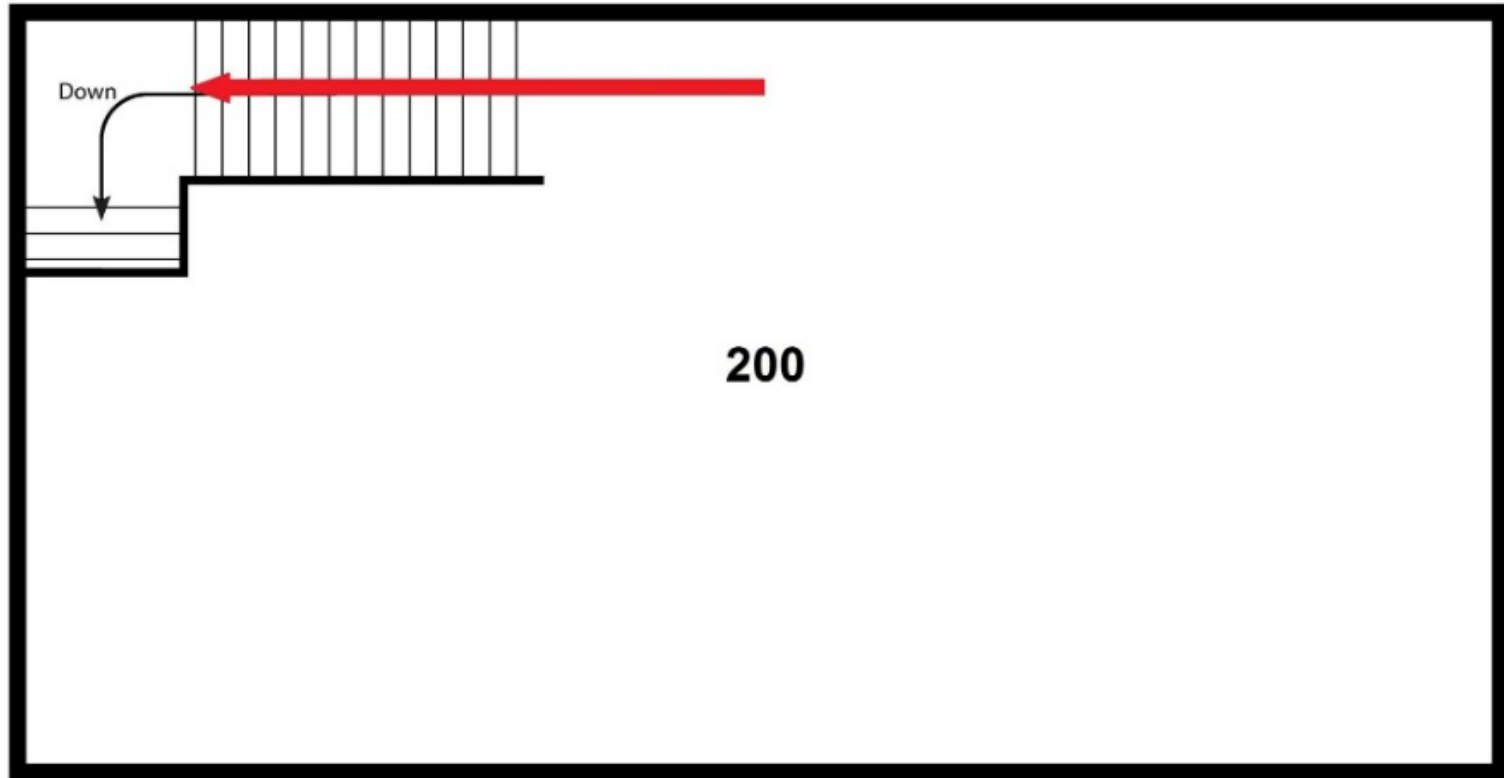



 Evacuation Route

EAA - Loading Dock of ME

Tornado Shelter - Ground Floor ME

# Evacuation Routes



 Evacuation Route

EAA - Loading Dock of ME

Tornado Shelter - Ground Floor ME

# *Evacuation Routes - Emergency Assembly Area*



# *All Hazards Siren - Shelter in Place*

## When the All Hazards Siren Activates, Go Indoors Immediately

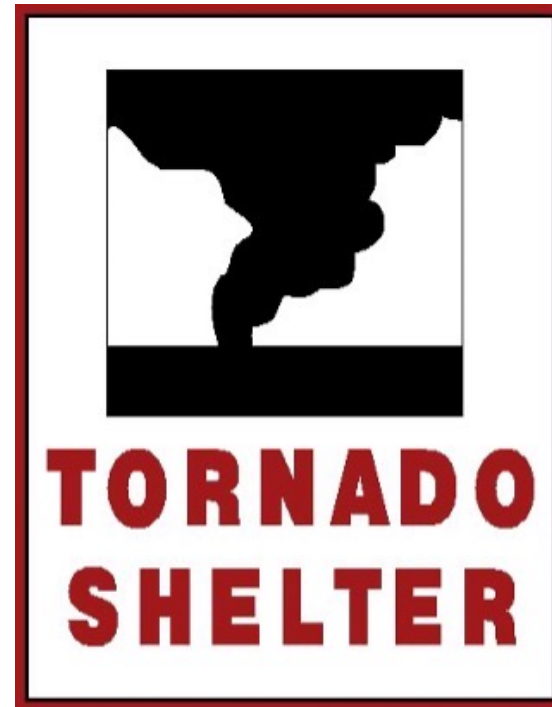
- Determine the cause of the siren using:
  - Text Alerts
  - E-mail Messages
  - Purdue Home Page
- Take Appropriate Action for the Emergency.



# *All-Hazards Siren - Weather Emergency*

## In case of Severe Weather or Tornado

- Move to an interior space away from windows and skylights
- If possible, move to the Basement, Ground, or First Floor of the ME Building
- Look For this sign. Locations are indicated on evacuation maps and building maps in hallways
- Wait for the All-Clear



# *All Hazards Siren - Shelter in Place*

## **In the case of Campus Violence or Active Shooter**

- Move to interior rooms that can lock
- Stay Aware from Glass Doors and Windows
- Remain 'Out of Sight' from someone outside the room
- Evaluate your options for escape and concealment

# *Shelter-in-Place Considerations*

## Shelter-in-Place Considerations for Life-Threatening Incidents

**This information is designed to encourage building occupants to develop an individual plan based on potential life threatening incidents such as a shooting on campus. Actions should be based on situational awareness. React to Purdue ALERT information as well as what you see and hear in your general area. See EP website for more info**

**[http://www.purdue.edu/emergency\\_preparedness/](http://www.purdue.edu/emergency_preparedness/)**



# Shelter-in-Place Considerations

<p><b>Get Ready</b>...be prepared. A life threatening incident has occurred on the West Lafayette campus; incident location is not near me.</p>	<p><b>General Actions:</b></p> <ul style="list-style-type: none"> <li>▪ Follow information sources: Homepage, Twitter @PurdueEmergency, text &amp; email alerts.</li> <li>▪ Review your BEP (located on the ME website).</li> <li>▪ Notify others of incident.</li> <li>▪ Review internal procedures; be ready to implement.</li> <li>▪ Plan next steps if incident impacts my area:             <ul style="list-style-type: none"> <li>o Should I get out?</li> <li>o Where will I shelter if needed?</li> </ul> </li> </ul>	<p><b>Specific actions based on your location:</b></p> <ul style="list-style-type: none"> <li>▪ Note that several building doors will lock but are accessible by key or card access.</li> <li>▪ Be sure to have your Purdue ID on your person.</li> <li>▪ Identify a location that can be barricaded or locked where you can shelter if needed.</li> <li>▪ Identify exit paths from the building that will allow you to escape if needed.</li> </ul>
<p><b>Get Set</b>...stay alert; be prepared to implement your plan. A life threatening incident has occurred on the West Lafayette campus; incident location is near me but not in my building.</p>	<p><b>Implement all Get Ready actions.</b></p> <ul style="list-style-type: none"> <li>▪ If the threat is ongoing or you feel your safety is in jeopardy, implement your department or building specific actions.</li> <li>▪ Be ready to get out/escape or shelter in safe area based on situational awareness.</li> </ul>	<p><b>Prepare to shelter in place if necessary.</b></p> <ul style="list-style-type: none"> <li>▪ Prepare to escape if that is best option.</li> <li>▪ Shut down any hazardous-material operations.</li> <li>▪ Leave laboratories and cleanroom in a safe condition.</li> <li>▪ Be sure to have your ID with you.</li> </ul>
<p><b>Go</b>...stay calm and activate your plan. A life threatening incident has occurred on the West Lafayette campus; incident location is in my building or I feel my safety is in jeopardy (location of perpetrator is unknown).</p>	<p><b>Based on situational awareness, immediately:</b></p> <ul style="list-style-type: none"> <li>▪ Decide if you can escape; if possible get out of the building to a safe location.</li> <li>▪ If you can't escape, then shelter in a lockable area and/or a room that you can secure or barricade.</li> <li>▪ As an absolute last resort, consider taking action if your safety is in jeopardy</li> </ul>	<p>Execute your plan as indicated in General Actions to the left.</p>

# *AED's - Automated External Defibrillators*

## **AED's are located near the elevators on all floors of the ME Building**

- These tools will diagnose and treat cardiac arrhythmias.
- These are used in conjunction with CPR to provide lifesaving care before Emergency Medical Services arrive
- If you use an AED, make sure to call 911 as well.
- CPR Training is available at no cost through the Purdue Fire Department



# *THANK YOU*

If you have questions, please contact Mike Logan or Pam Graf. Contact details located at the beginning of this presentation.