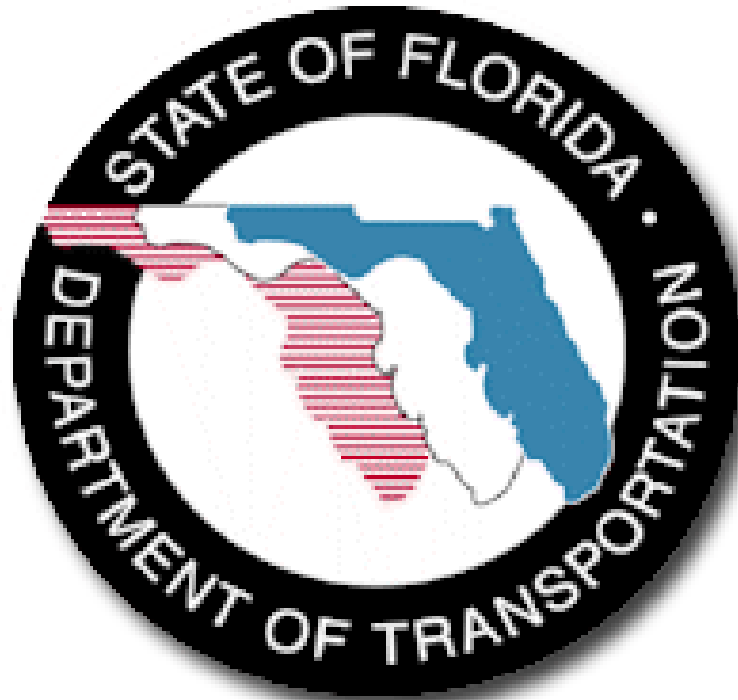


CTQP



Florida Department of Transportation's
Construction Training Qualification Program

Bridge of Lyons St. Augustine, FL.



Paving Plant in Polk County
May 1917



In the early 1900s, traveling by automobile remained an adventure in most areas due to poor roads. Polk county, which utilized trails dating from the Seminole War, responded to advocates of good roads in 1916 by contracting for 217 miles of asphalt road. The photo shows the Cummer one-car railroad paving plant of E.C.

Brooksville Road Construction
late 1926



Paving Roads in Miami
1921

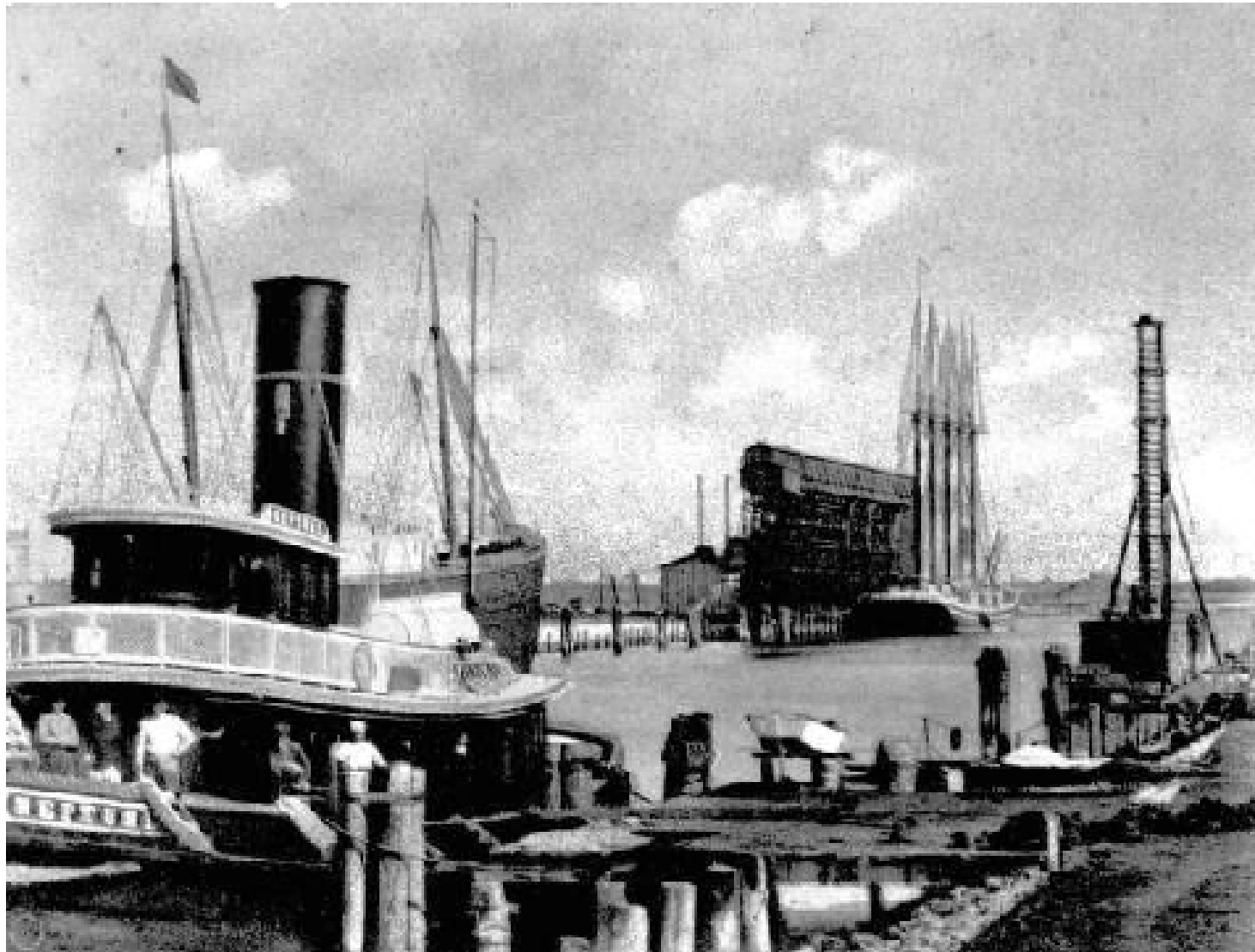


Sulphur Springs Bridge
1923



Sulphur Springs Bridge (27 k)

Port of Tampa
early 1900s

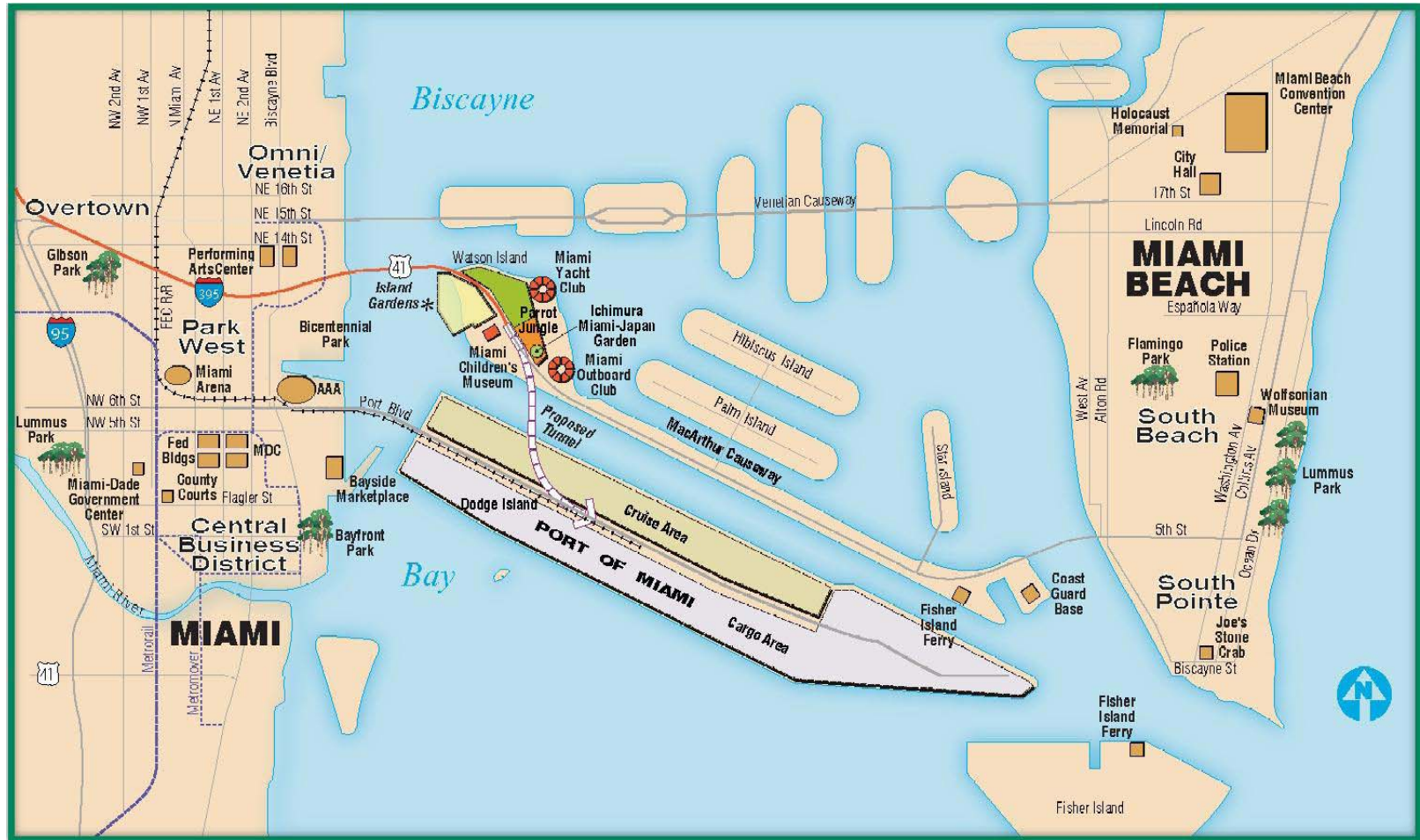


Major Projects Today

- First Coast Outer Beltway \$1.8 B
- Port of Miami Tunnel \$1 B



Port of Miami Tunnel



QC 2000

- (CFR) 637.207, required that after June 2000, all "sampling and testing" shall be executed by qualified laboratories and qualified sampling and testing personnel.
- This rule permits the use of data for materials acceptance from the contractors, provided they and their laboratories have been qualified by FDOT.

What is CTQP?

- A program for FDOT, Consultant, and Contractor personnel to receive training and become qualified to test materials to improve Florida's roads.
- Asphalt, Concrete, Aggregates, Earthwork, Geotechnical, Final Estimates, QC Management

What Else?

- Qualification Database
- Laboratory Information Management System
- (Internet Based)

In the beginning

- Contracted with U of F as administrator and sole provider
- Implementation Teams
- TRTs
- Advisory Committee
- Laboratory Facilities

Today

One private administrator

Many providers

Qualifications

- Valid for five years
- Course attendance optional
- Revoked / Disqualified
- Requalification requirements same as initial
- No Reciprocity

Laboratory Accreditation

- Also Privatized – CMEC
- ASTM E329 – “Standard Specification for Agencies Engaged in the Testing and/or Inspection of Materials used in Construction”
- AASHTO R18 - "Recommended Practice for Establishing and Implementing a Quality System for Construction Materials Testing Laboratories.”

Current Initiative

- Web Based Training
 - Asphalt Paving 1 & 2
 - Earthwork Construction Inspection 1 & 2
 - Final Estimates 1 & 2

Website

- Ctqpflorida.com