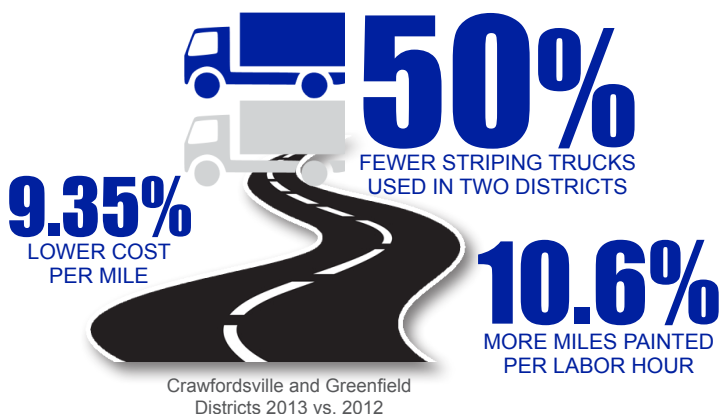




STRIPING TRUCK UTILIZATION PROJECT

Prior to 2013, INDOT operated two paint trucks per district (one edge line truck and one center line truck). The Greenfield and Crawfordsville districts were chosen to develop and test ideas to enable the transition to painting with just one truck per district. Teams from both districts, including paint truck drivers, painters and managers, participated in a series of Value Stream Mapping (VSM) sessions facilitated by the Purdue Technical Assistance Program (TAP). The value stream maps were then used to identify opportunities to improve painting operations.



Research references SPR-3722:

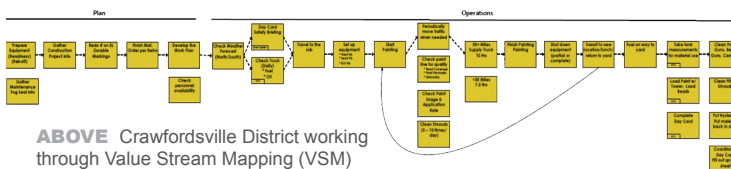
“Striping Truck Utilization at Crawfordsville and Greenfield”
January 2013, L. David Snow and James Handy, Principal Investigators



PURDUE
UNIVERSITY



Improvement ideas included both process changes and physical alterations to existing paint trucks. Both districts created and then followed an action plan that allowed them to test the ideas during the second half of the 2013 and first half of the 2014 paint season. Although the Crawfordsville and Greenfield districts implemented different approaches, both were able to complete all of their scheduled lane miles during the season with just one truck each.



ABOVE Crawfordsville District working through Value Stream Mapping (VSM) process; VSM was then converted to an electronic version

BELOW Top: Crawfordsville District modified truck; Bottom: Greenfield District modified truck

