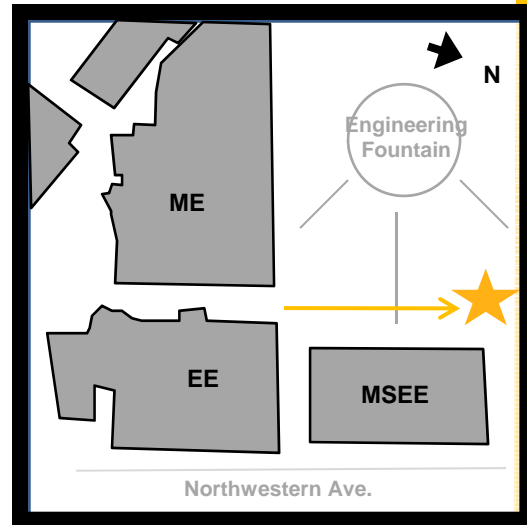


Evacuation and Shelter-In-Place Procedures

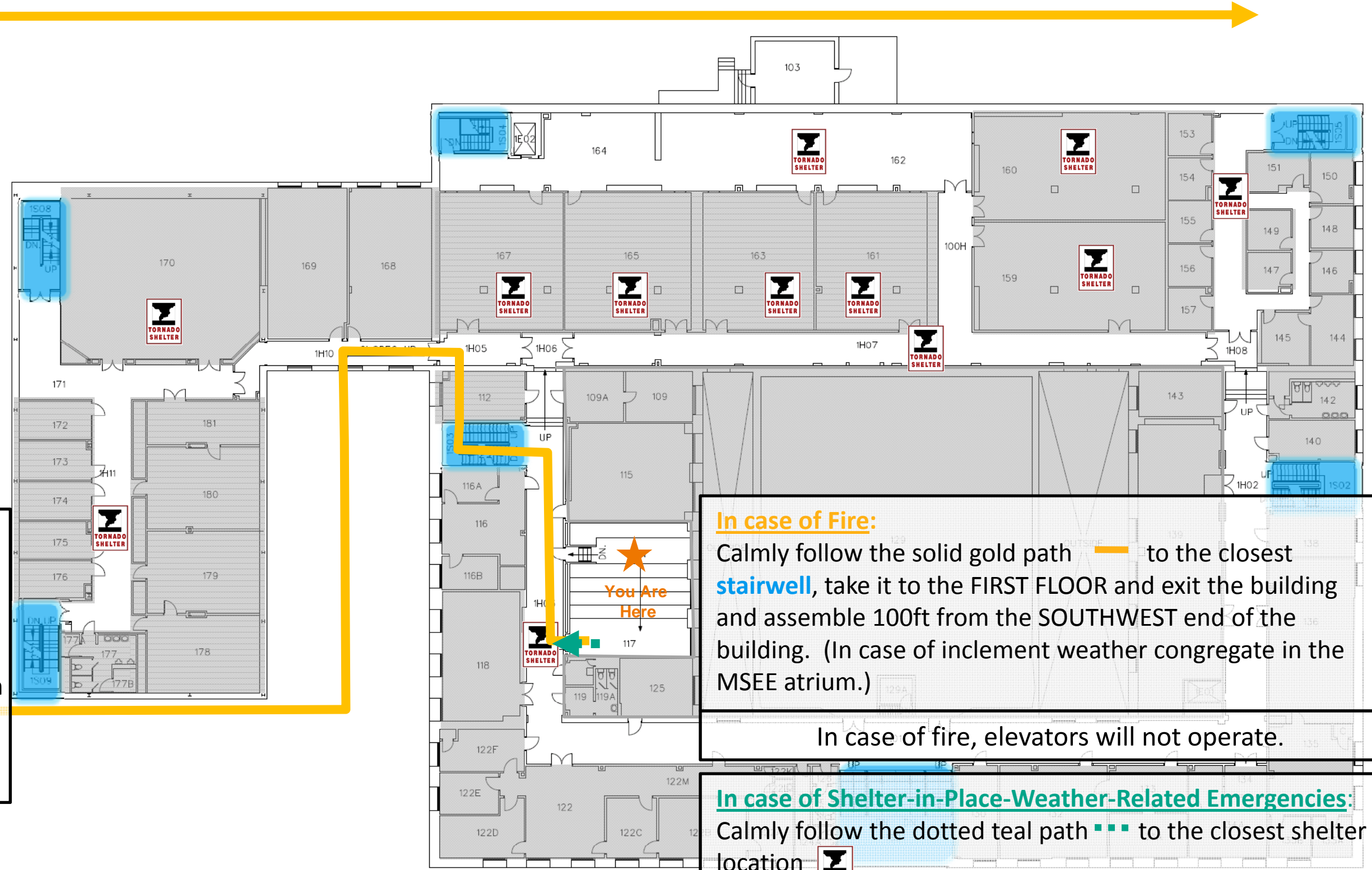


Emergency Assembly Area

In case of Violence:

If incident is occurring in your building, call 911 if possible.

If possible, seek shelter in a lockable or securable room, preferably without windows.



In case of Fire:

Calmly follow the solid gold path to the closest stairwell, take it to the FIRST FLOOR and exit the building and assemble 100ft from the SOUTHWEST end of the building. (In case of inclement weather congregate in the MSEE atrium.)

In case of fire, elevators will not operate.

In case of Shelter-in-Place-Weather-Related Emergencies:

Calmly follow the dotted teal path to the closest shelter location

Evacuation Procedures

- You are in a facility used for research; it is possible that the evacuation horn will sound.
- This is a very loud INSIDE alarm.
- Please walk calmly out of the building and gather outside in the Engineering Mall near PHYS.
- Stay in the mall area until a police officer gives the all clear.
- It is extremely dangerous to enter a building in the middle of an emergency.
- It is the responsibility of the faculty and staff to execute this emergency plan upon hearing the evacuation siren.

All Hazards Emergency Warning Sirens

- A weather emergency, such as a tornado, will activate the “shelter in place” siren.
- This is a less audible OUTSIDE, area-wide siren.
- Please seek shelter in the shelter locations indicated on the previous slide, away from all exterior windows and doors.