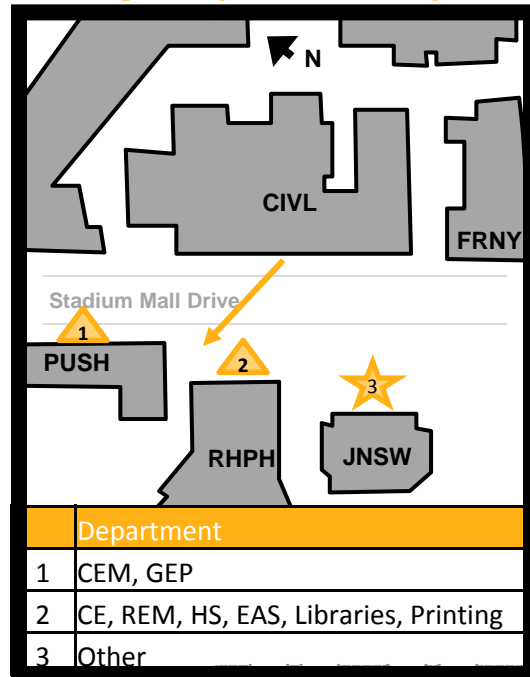


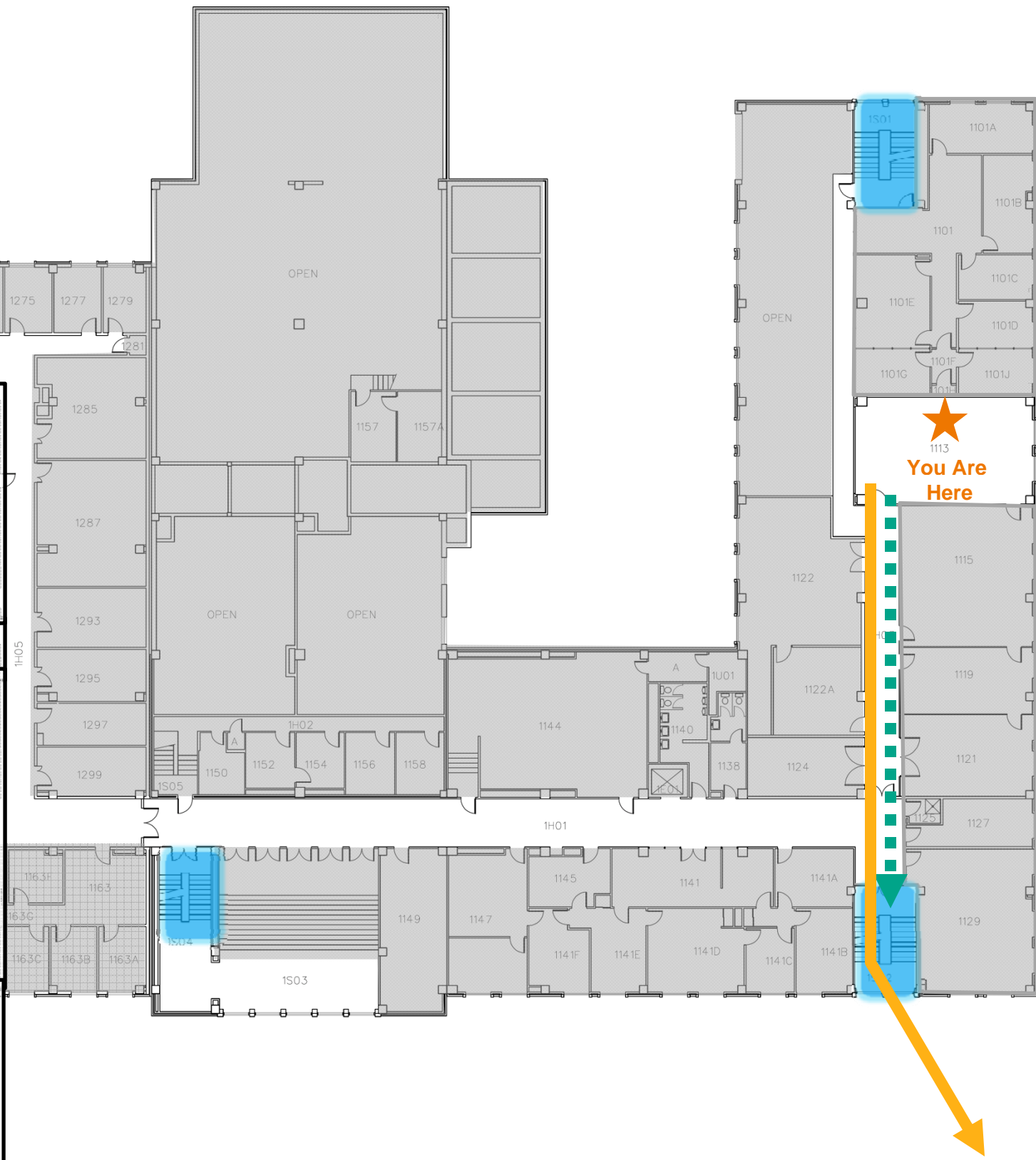
Emergency Assembly Area




Evacuation and Shelter-In-Place Procedures

CIVL 1113

Updated: Fall 2010





In case of Fire:

Calmly follow the solid gold path  to the closest **stairwell**, take it to exit the building, assemble 100ft from the SOUTHWEST end of the building. (In case of incidental weather congregate in the Armstrong Atrium.)

In case of fire, elevators will not operate.

In case of Shelter-in-Place-Weather-Related Emergencies:

Calmly follow the dotted teal path  to the closest **stairwell**, take it to the BASEMENT LEVEL and find a shelter location 



In case of Violence:

If incident is occurring in your building, if possible call 911. Seek shelter in a lockable or securable room, preferably without windows.

Evacuation Procedures

- You are in a facility used for research; it is possible that the evacuation horn will sound.
- This is a very loud INSIDE alarm.
- Please walk calmly out of the building and gather outside between PUSH and RHPH.
- Stay on the Southwest side of Stadium Mall Drive until a police officer gives the all clear.
- It is extremely dangerous to enter a building in the middle of an emergency.
- It is the responsibility of the faculty and staff to execute this emergency plan upon hearing the evacuation siren.

All Hazards Emergency Warning Sirens

- A weather emergency, such as a tornado, will activate the “shelter in place” siren.
- This is a less audible OUTSIDE, area-wide siren.
- Please seek shelter in the basement area.