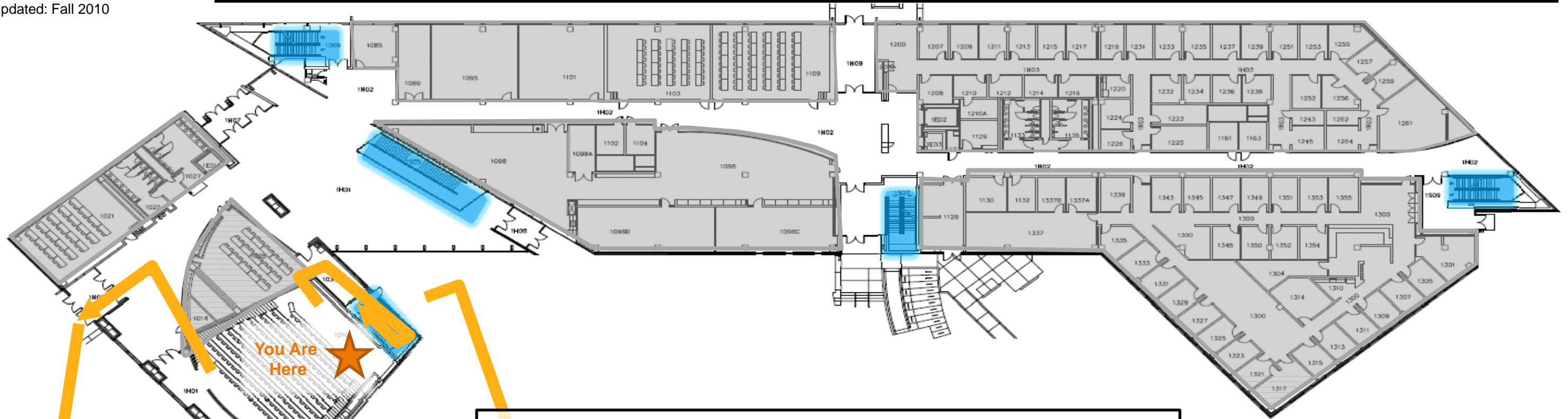


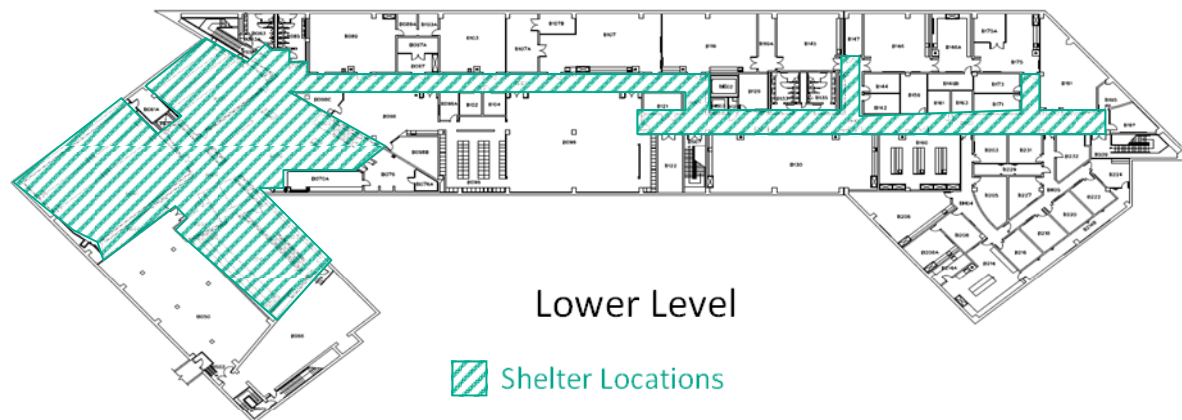
Evacuation and Shelter-In-Place Procedures



In case of Fire:
 Calmly follow a solid gold path — to the closest **stairwell** or exit, leave the building and assemble 100ft from the SOUTHWEST end of Armstrong.

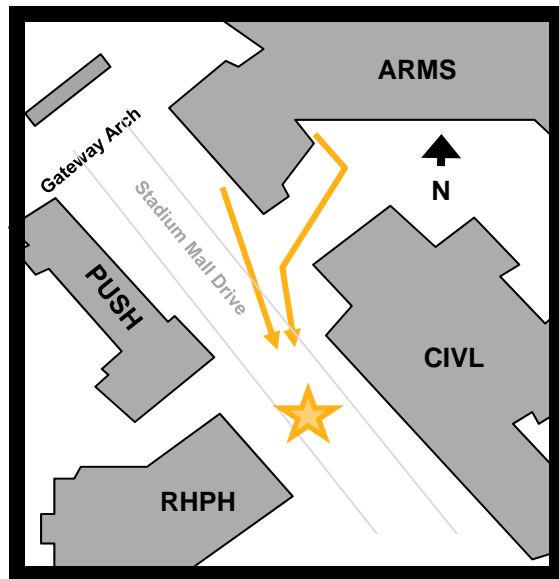
In case of fire, elevators will not operate.

In case of Shelter-in-Place-Weather-Related Emergencies:
 Calmly remain in 1010



In case of Violence:
 If incident is occurring in your building, call 911 if possible.

 If possible, seek shelter in a lockable or securable room, preferably without windows.



Emergency Assembly Area

ARMS

Evacuation Procedures

- You are in a facility used for research; it is possible that the evacuation horn will sound.
- This is a very loud INSIDE alarm.
- Please walk calmly out of the building and gather outside on Stadium Mall Drive to the Southwest of CIVL.
- Stay in the CIVL area until a police officer gives the all clear.
- It is extremely dangerous to enter a building in the middle of an emergency.
- It is the responsibility of the faculty and staff to execute this emergency plan upon hearing the evacuation siren.

All Hazards Emergency Warning Sirens

- A weather emergency, such as a tornado, will activate the “shelter in place” siren.
- This is a less audible OUTSIDE, area-wide siren.
- Please seek shelter in the basement area.