

# Evacuation and Shelter-In-Place Procedures

**In case of Violence:**

If incident is occurring in your building, call 911 if possible.

If possible, seek shelter in a lockable or securable room, preferably without windows.

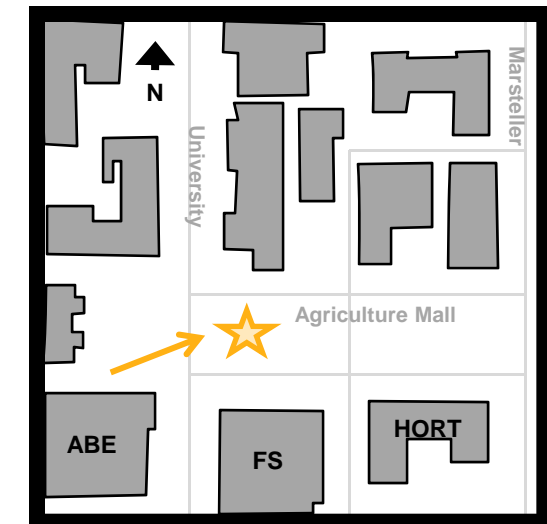
**In case of Fire:**

Calmly follow the solid gold path — to the closest **stairwell**, take it to the FIRST FLOOR and exit the building, assemble 100ft from the NORTHEAST end of the building. (In case of inclement weather congregate in the Hansen Hall Lobby )

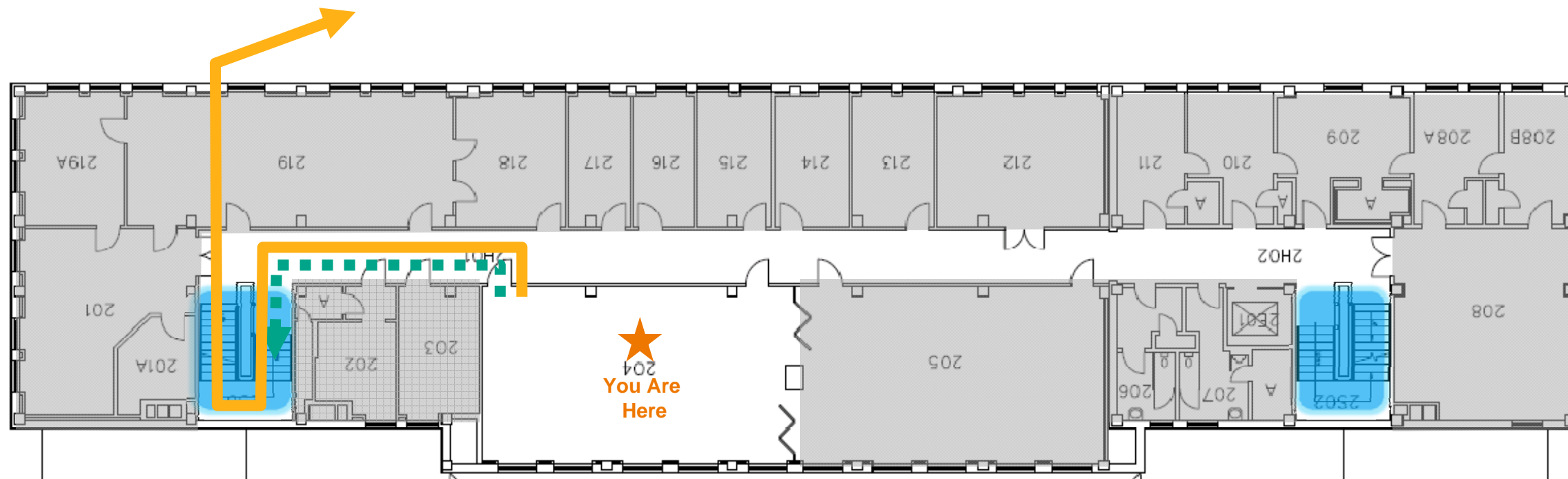
In case of fire, elevators will not operate.

**In case of Shelter-in-Place-Weather-Related Emergencies:**

Calmly follow the dotted teal path ... to the closest **stairwell**, take it to the FIRST FLOOR hallway and find a shelter location.



Emergency Assembly Area



## Evacuation Procedures

- You are in a facility used for research; it is possible that the evacuation horn will sound.
- This is a very loud INSIDE alarm.
- Please walk calmly out of the building and gather outside in the Agriculture mall.
- Stay in the mall area until a police officer gives the all clear.
- It is extremely dangerous to enter a building in the middle of an emergency.
- It is the responsibility of the faculty and staff to execute this emergency plan upon hearing the evacuation siren.

## All Hazards Emergency Warning Sirens

- A weather emergency, such as a tornado, will activate the “shelter in place” siren.
- This is a less audible OUTSIDE, area-wide siren.
- Please seek shelter in the first floor hall area.