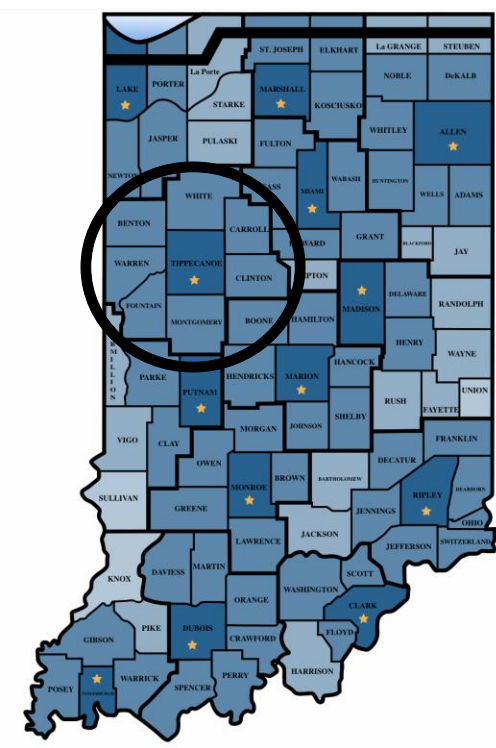


## CLIENT BACKGROUND

Client: Indiana State Police Post 14  
Project Champion: Lt. Jerry Holeman

- Location: Lafayette, IN
- About the Post:
  - 1 of 14 Posts State-Wide
  - Build in early 1970s
  - ~30 Employees
- Purpose: Enforcement/Investigation



## LAYOUT ALGORITHMS

Computerized Relationship Layout Planning (CORELAP)

- Min  $\Sigma$ (relationship x distance)

Automated Layout Design Program (ALDEP)

- Max  $\Sigma$ (relationship between neighbors)

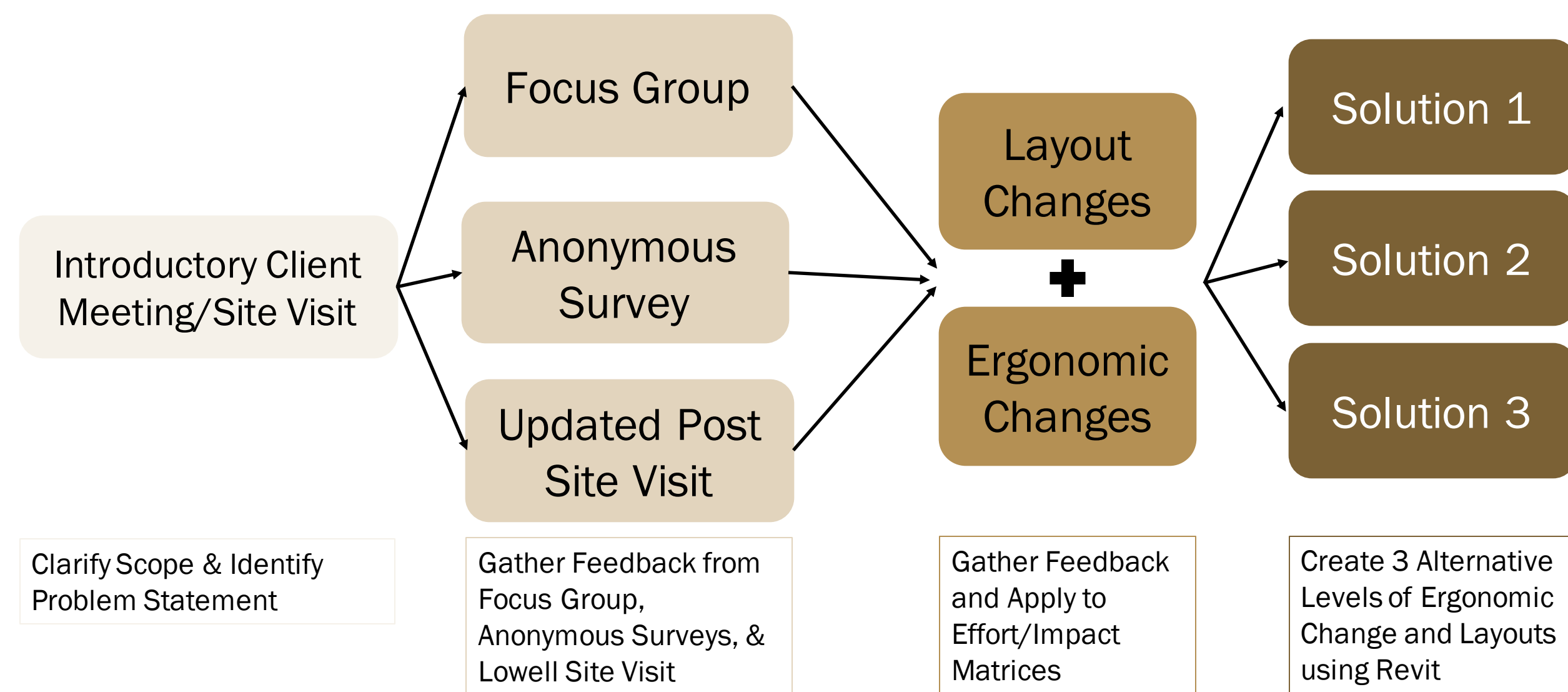
Layout	CORELAP Score	ALDEP Score
Current	1694	198
Level 1	1525	208
Level 2	1256	226
Level 3	1448	222

## PROBLEM STATEMENT

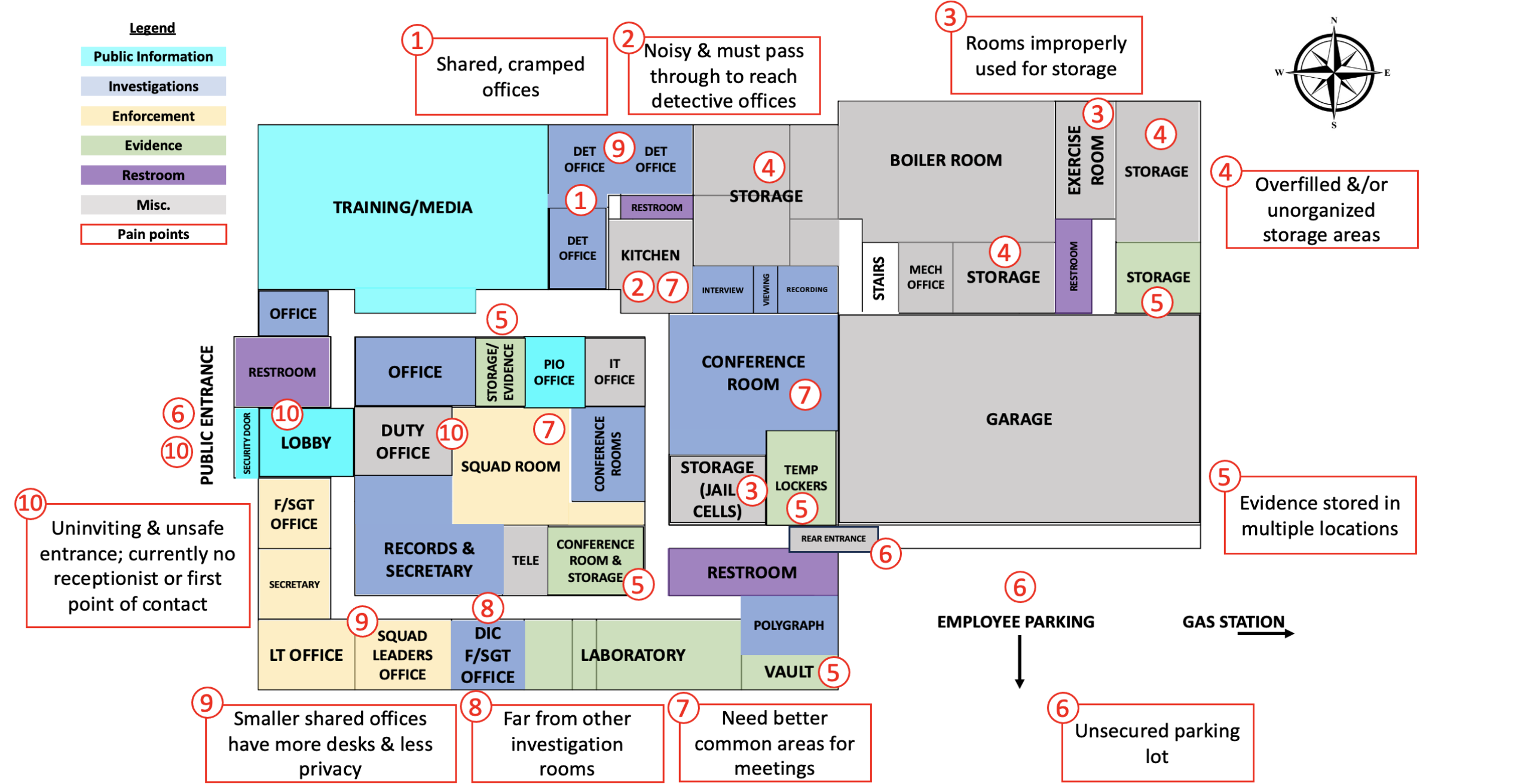
Post 14 requires renovation/redesign to improve:



## METHODOLOGY

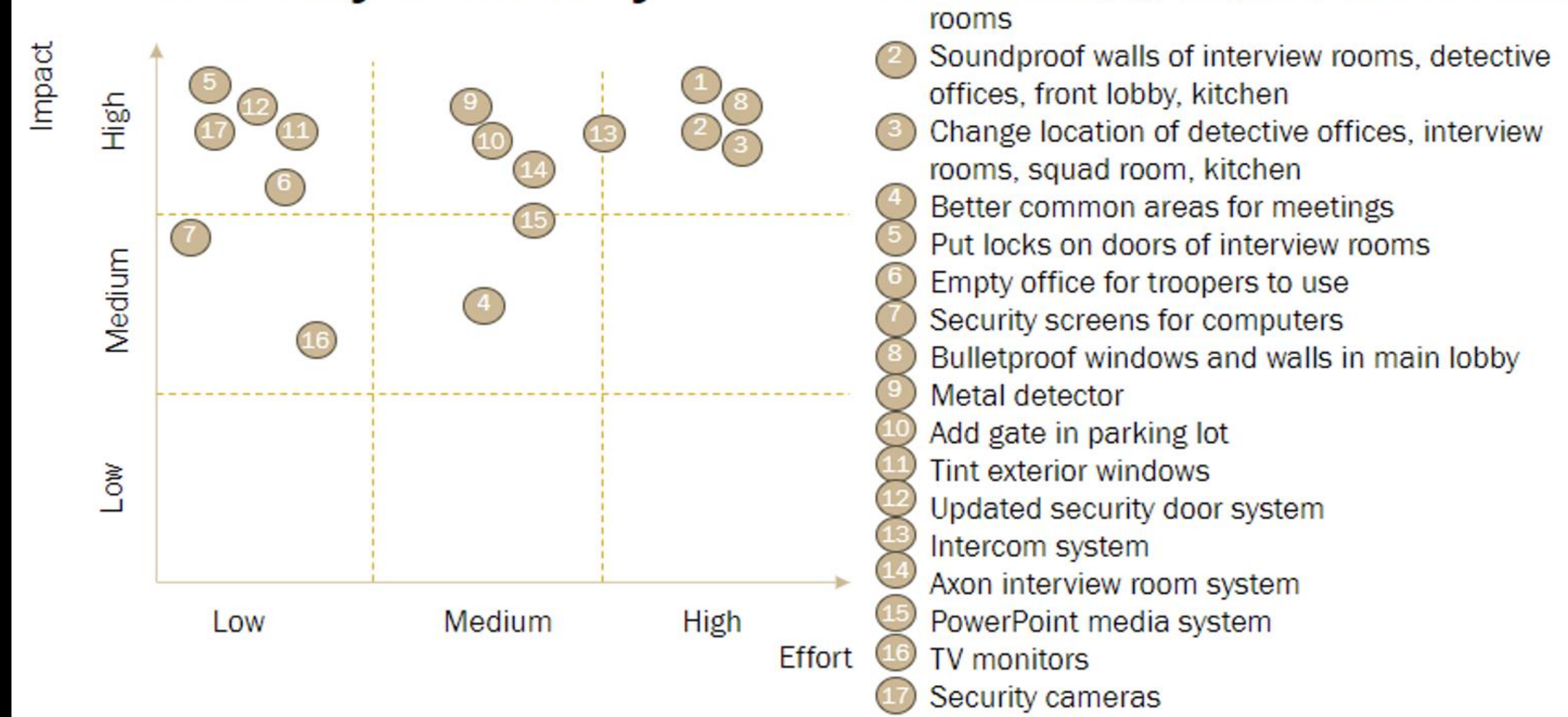


## SYSTEM MODEL

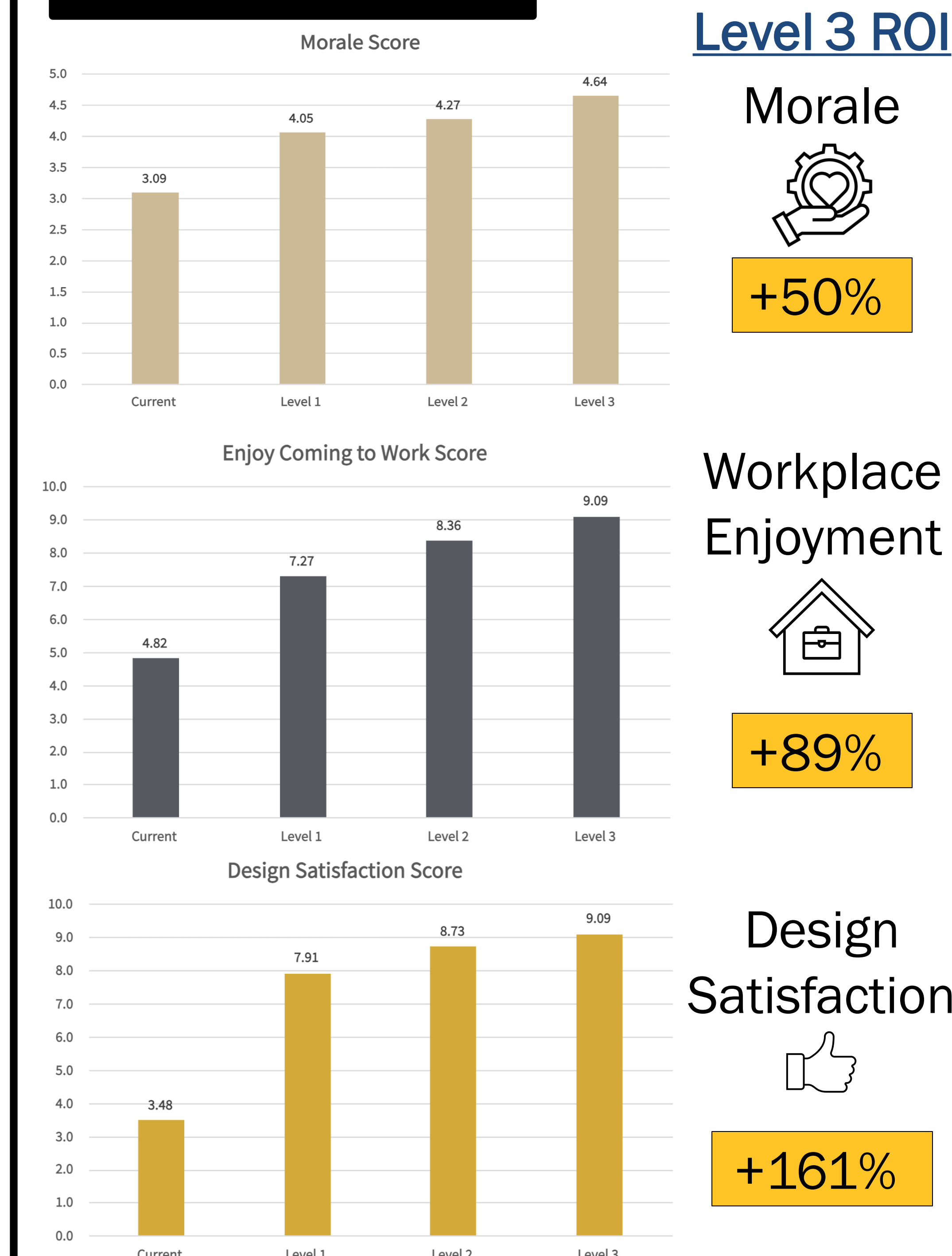


## EFFORT/IMPACT MATRIX

### Privacy & Safety



## DISCUSSION



## RESULTS

### LEVEL 3 - OPTIMAL

New Construction: Est. 20,800ft<sup>2</sup>  
Labor & Materials ~ \$17.4M



Solution	Expected Result
Soundproof Walls of Interview Rooms and Detective Offices	
Bulletproof Exterior and Interior Windows of the Security Area	
Bullet Resistant Walls in the Lobby	
Intercom and "Panic" Button	Increases Safety and Privacy for Personnel
Frosted Windows/Walls in Offices and Conference Rooms	
Security Access Point from Garage Door to the Interior of the Post	
Soundproof Walls of Interview Rooms and Detective Offices	Increases Available Space by Eliminating the Need for a Designated Observation Room and increases Technology Cohesion
Axon Interview Room System	Increases Morale for Staff by Allowing for a Proper Break from Work
Updated Kitchen/Break Room Area	Increases Technological Capacity in Each Room and Allows for a Higher Range of Devices
More Accessible Outlets	
<b>Total Estimated Retail Cost</b>	<b>\$746,000</b>

### LEVEL 2 - FEASIBLE

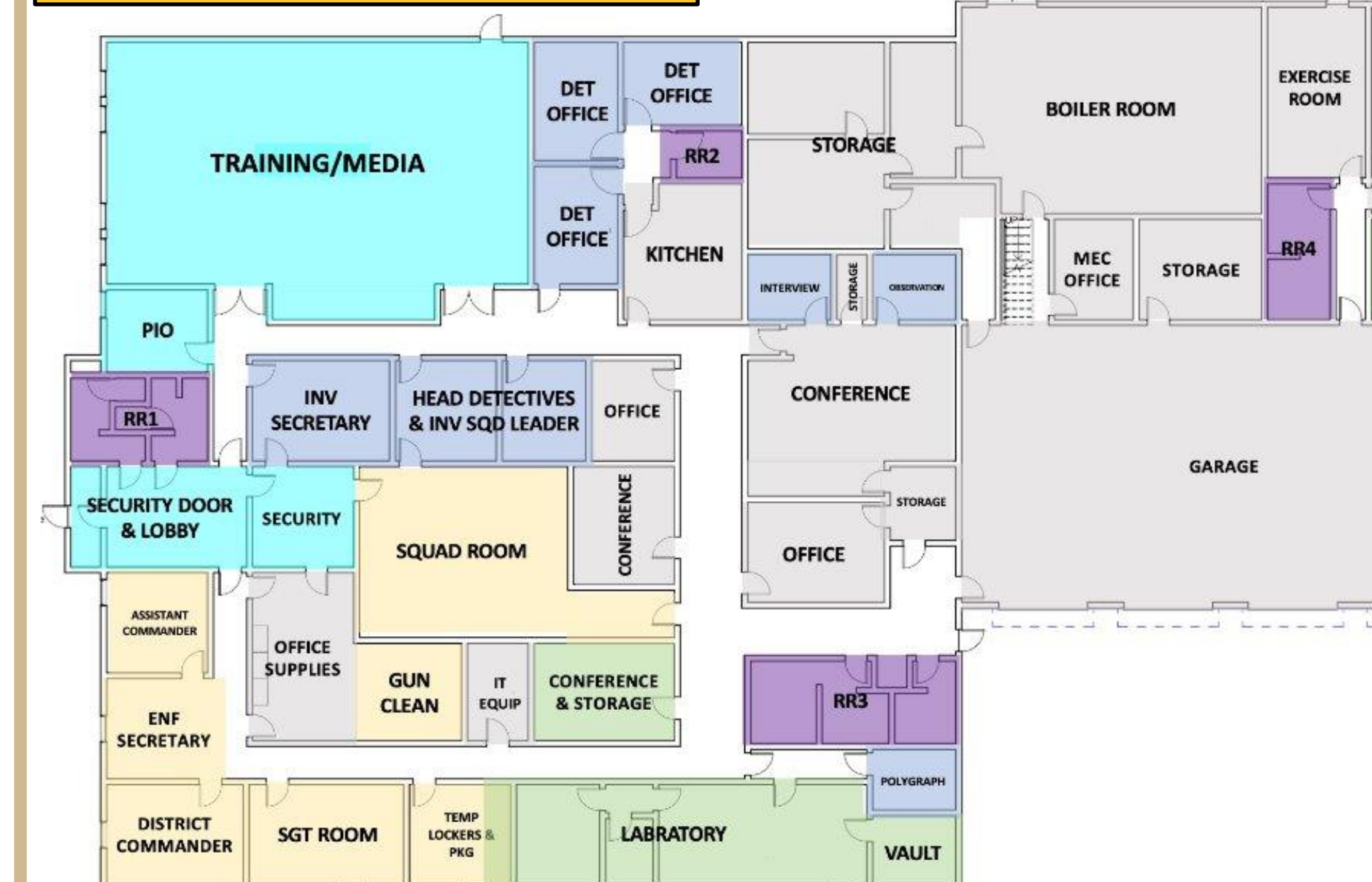
Existing: Est. 13,500ft<sup>2</sup>  
Labor & Materials ~ \$152,000



Solution	Expected Result
Metal Detector	Increases the Security and Safety of Personnel
Security Gate in Parking Lot	
Presentation Media System	Increases Usability of Technology and Enables the Ability to Share Information to Multiple People at Once
Updated Flooring	
New Ceiling Tiles	
Ergonomic Chairs Conducive with Gun Belts	Increases Staff Morale by Creating an Environment More Conducive to Work
Linear LED Light Fixtures	
Countertop Cabinets	Decreases Unnecessary Clutter and Provides More Space for Layout Options It Provides More Efficient Storage
Moveable Storage Cabinets for Evidence	Provides the Necessary Storage of Evidence while also Allowing Movement and Location Versatility
Soundproof Interview Rooms and Door	Increases Available Space in the Post by allowing Interviews or Polygraph Tests to Happen in One Room
<b>Total Estimated Retail Cost</b>	<b>\$470,000</b>

### LEVEL 1- MOST REALISTIC

Existing: Est. 13,500ft<sup>2</sup>  
Labor & Materials ~ \$3,000



Solution	Expected Result
Add Locks to Interview Room Doors	
Add Ring Doorbell	Increases Security, Privacy, and Safety of Staff
Tinted Security Screens for Computer Monitors	
Tint Exterior Windows	
New TV Monitors	
New Computer Monitors	Increases Technology Usability to Complete Necessary Job Tasks
Colored Printer	
Moveable Outlet Stand	
Gun Cleaning Equipment	
Calming Office Décor such as Plants	Improves Productivity by Reducing Stress and Creating a Calmer Environment
Medium Blue Paint	
New Sit-Stand Desks	Decreases Back and Neck Pain and Improves Productivity
Add Directional Signs for the Public	Increases Security by Relieving Confusion for Visitors on where they Should Park and Enter the Post
<b>Total Estimated Retail Cost</b>	<b>\$7,700</b>