

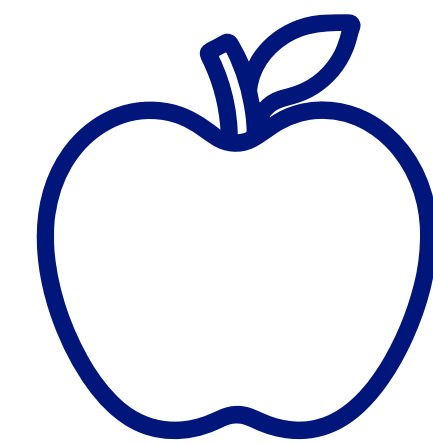
About Circle Beverage



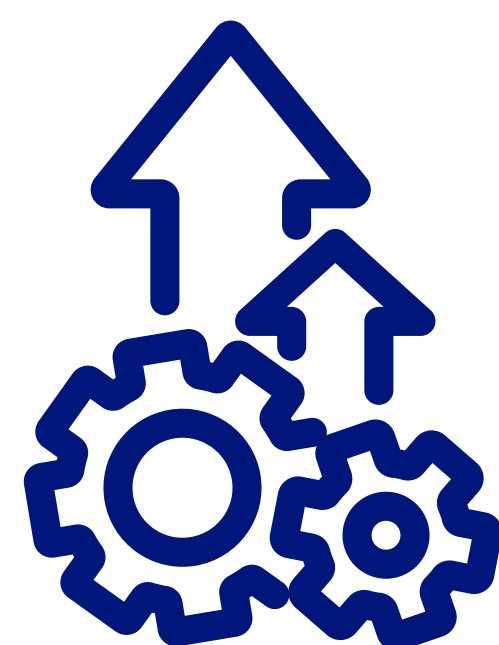
Located in Indianapolis, Indiana.



Founded in 2015 by CEO Matt Whiteside.



Created with the goal of producing healthier beverage options.



Circle is currently operating at maximum capacity, so they need to install new machinery that will open an additional 50% capacity of production.

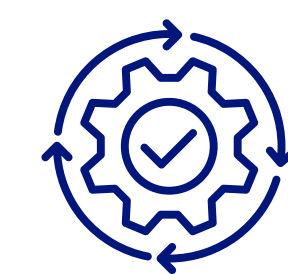
Problem Statement

Using Circle Beverage's current maintenance and shutdown practices, we aim to build PM plans for new assets, streamline the current PM system, and create a shutdown schedule to reduce downtime and support a 50% production increase.

Methodologies



STANDARDIZE OEM MAINTENANCE
Convert OEM manuals into precise PM tasks and spare-parts lists.



OPTIMIZE PM PROGRAM
Correct missing or mis-timed PMs and align MaintainX to new assets.

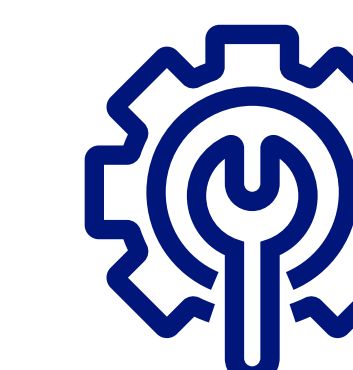


STRUCTURE OUTAGE SCHEDULE
Organize shutdown tasks and timelines into a clear, trackable gantt chart.

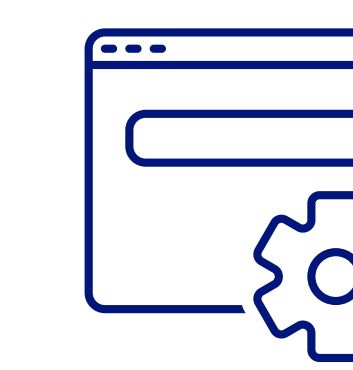
Results



Updated PM plan for all new assets, as well as critical existing assets.



Developed SOPs for PM tasks based on asset manuals.



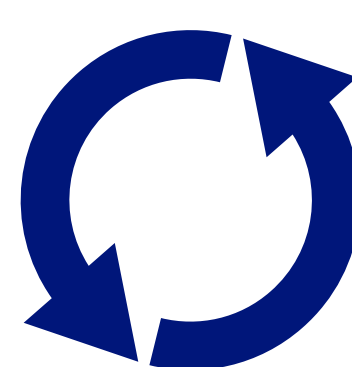
New MaintainX CMMS system functionality directions.

Discussion

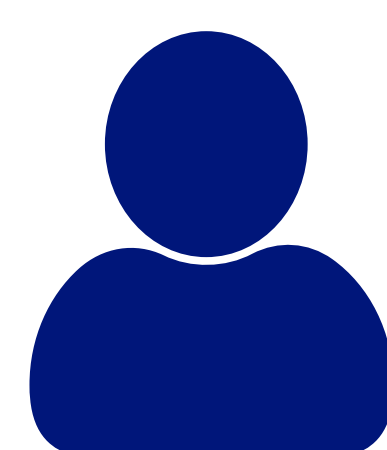
Potential Recommendations:



Adjust PM Timeline Accordingly
All timelines were based on OEM manuals, so as time progresses it is recommended to adjust the PM timelines to how the company see's fit.



Regularly Audit MaintainX
Annually check the preventative maintenance documentation in MaintainX to ensure everything is up to date.



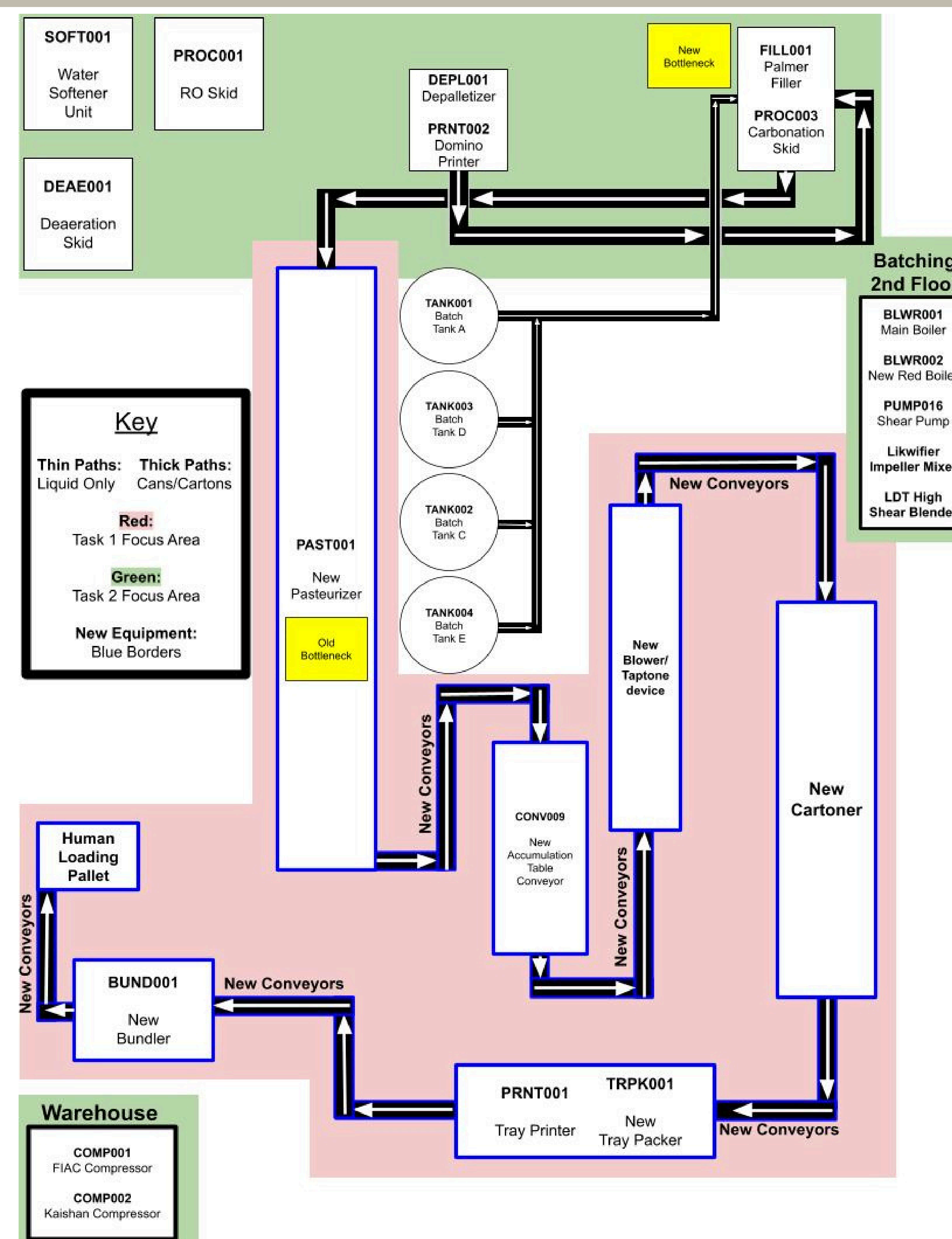
Enforce Task Accountability
Assign clear task owners to monitor progress during the shutdown, ensuring all activities stay on schedule and high-priority tasks are completed first.

System Model

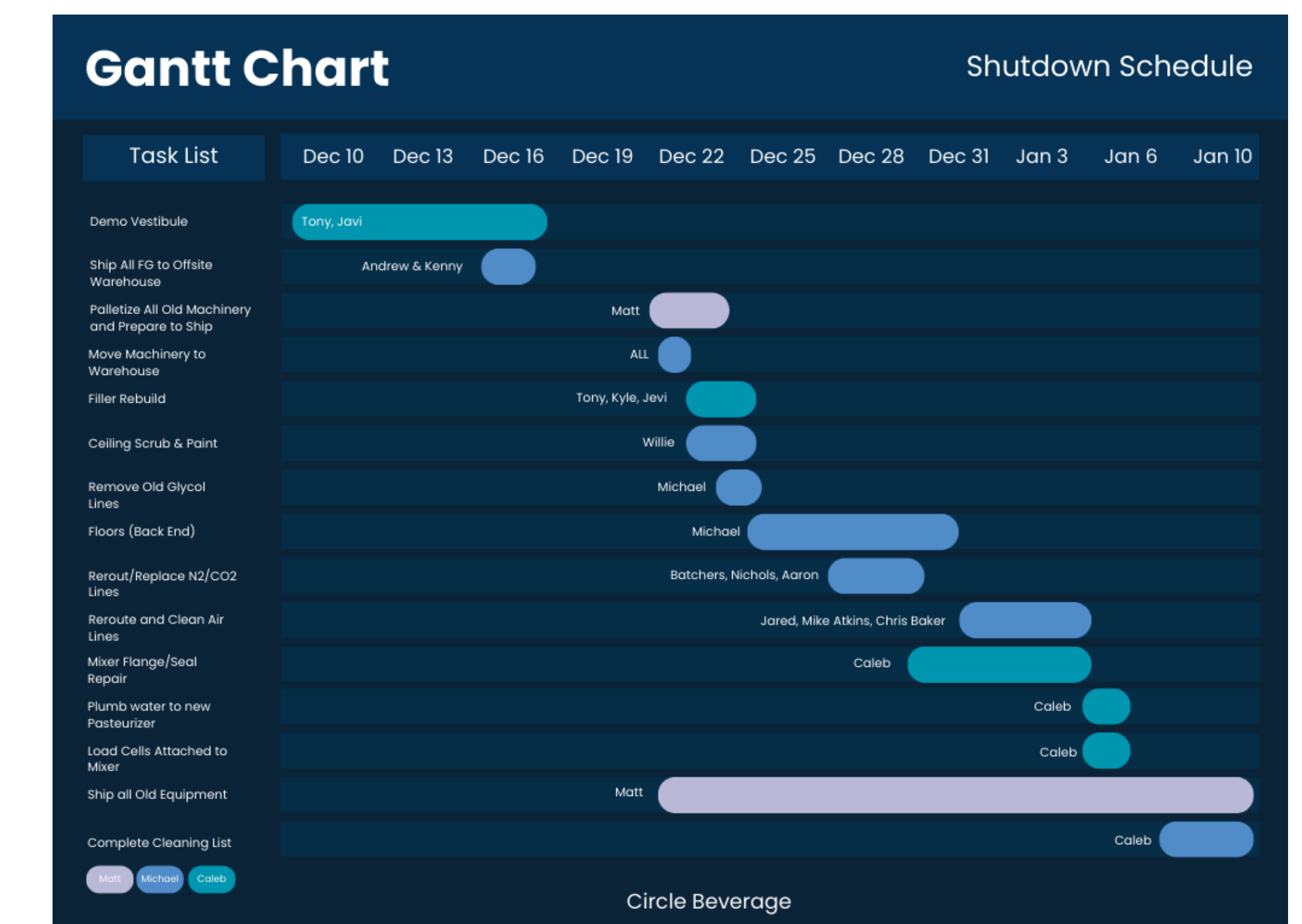
The system bottleneck has shifted from the Tunnel Pasteurizer to the Palmer Filler.

The **GREEN** area represents the existing assets the team focused on for renewing the PM plans.

The **RED** area represents the new assets that had their PM plans developed from scratch.



Shutdown Gantt Chart



Costs

- PM development.
- Shutdown schedule creation.
- Initial project investment.



Benefits

- 25% reduction of unplanned downtime.
- On-time shutdown execution.
- 50% increase in capacity.