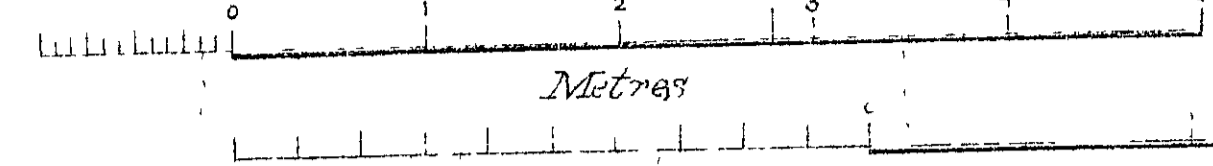


C.B. & Q.R.R. BURLINGTON BRIDGE.

246'-0" Fixed Span, Double Track.

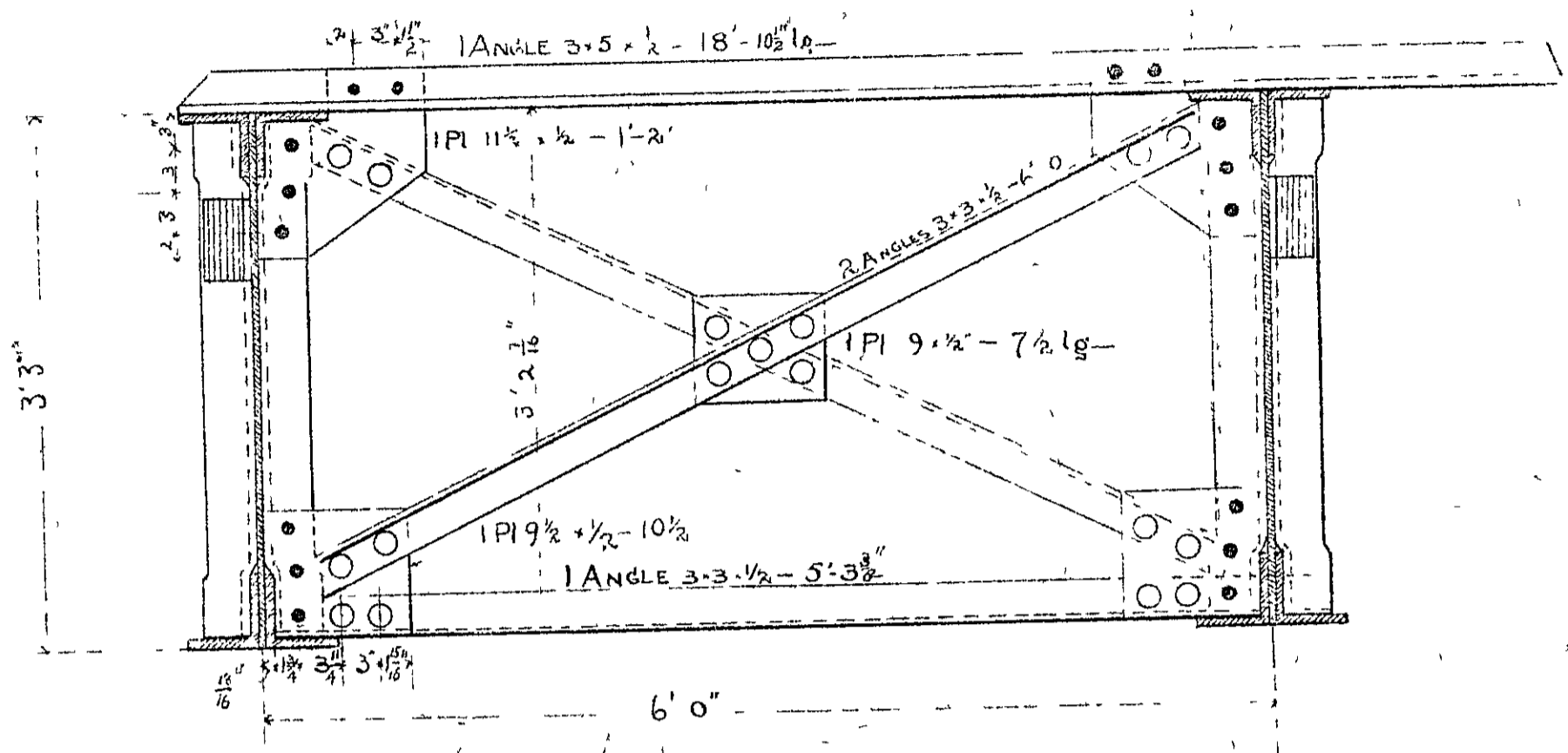
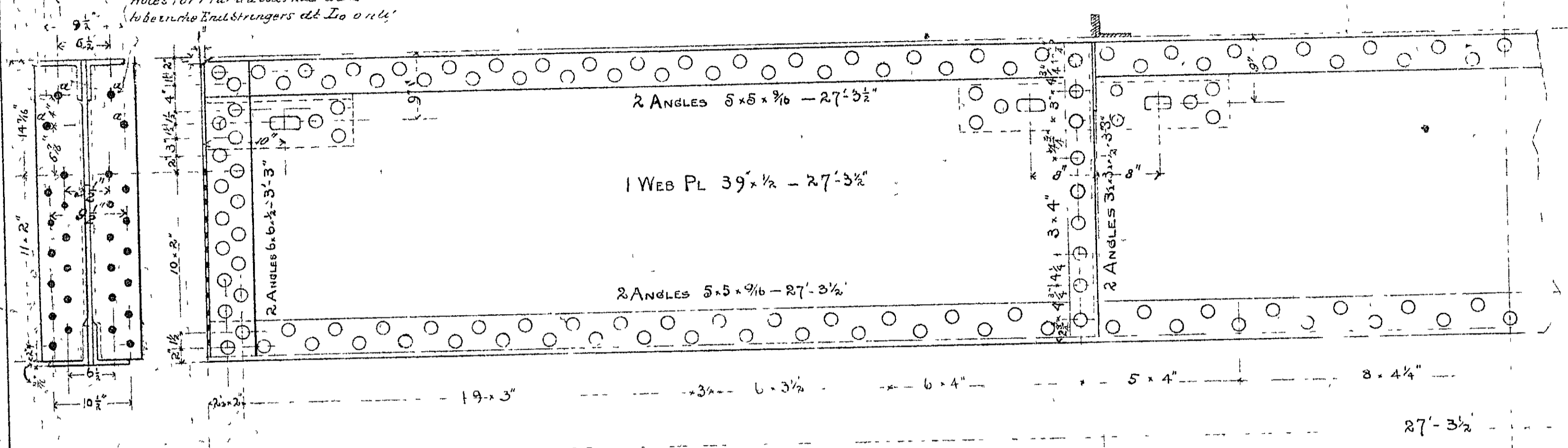
Scale 1"=1ft



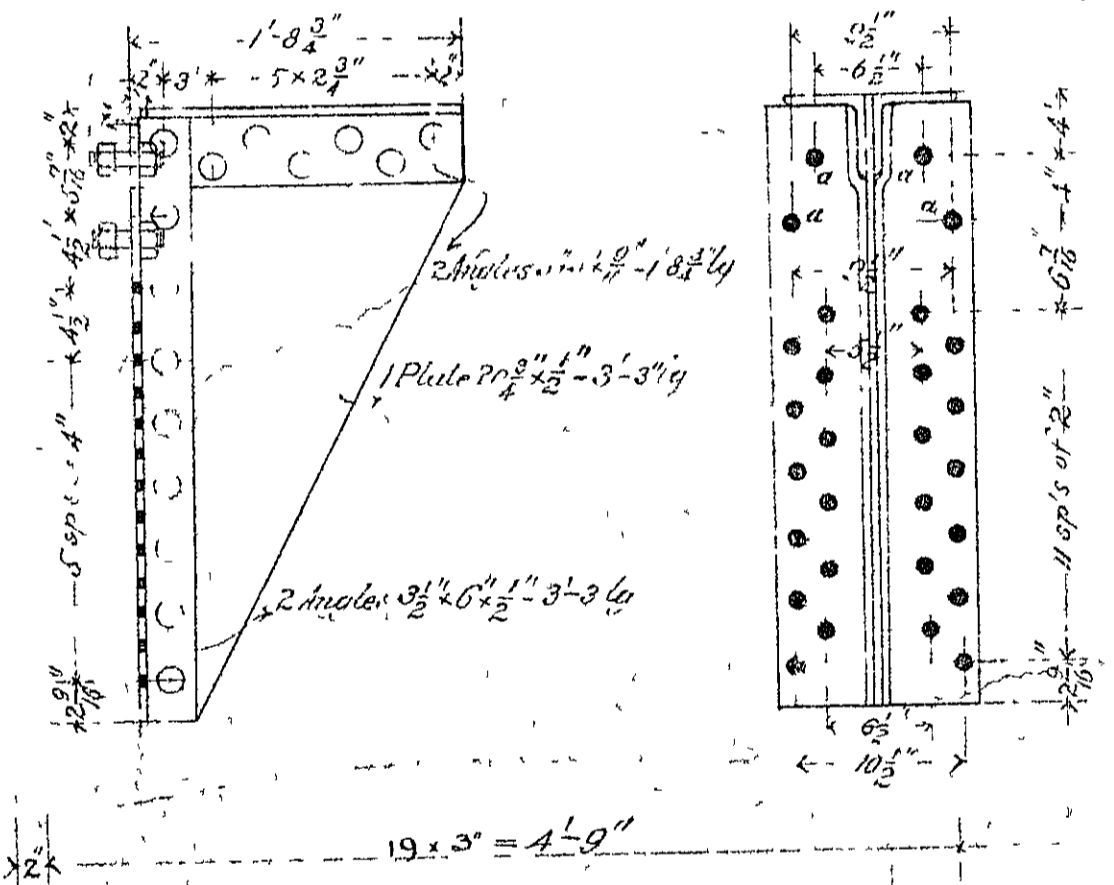
3/8 Rivets

MAKE 36 STRINGERS LIKE THIS
Weight of each 4302 lbs

Holes for 1" turned bolts marked 'a' to be in the End Stringers at 20" on center

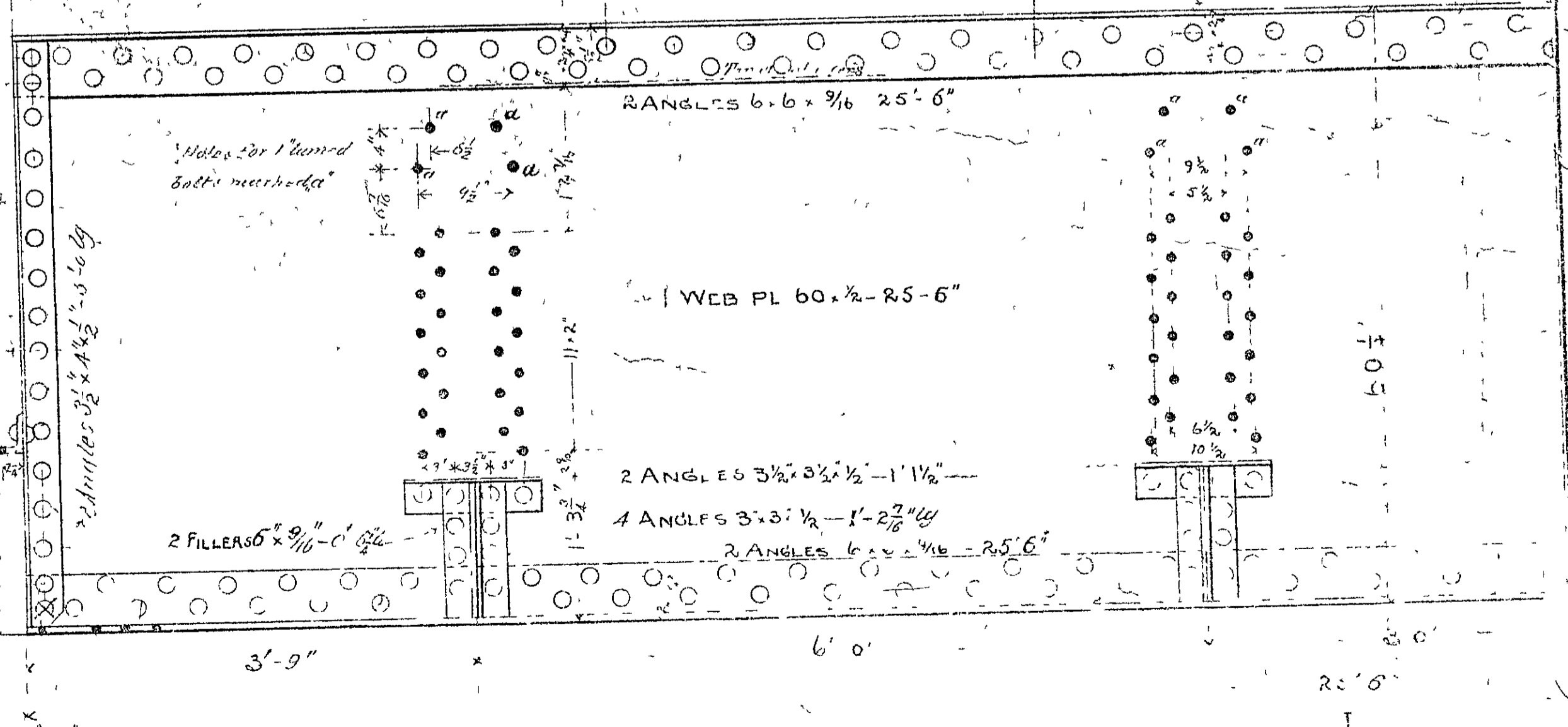
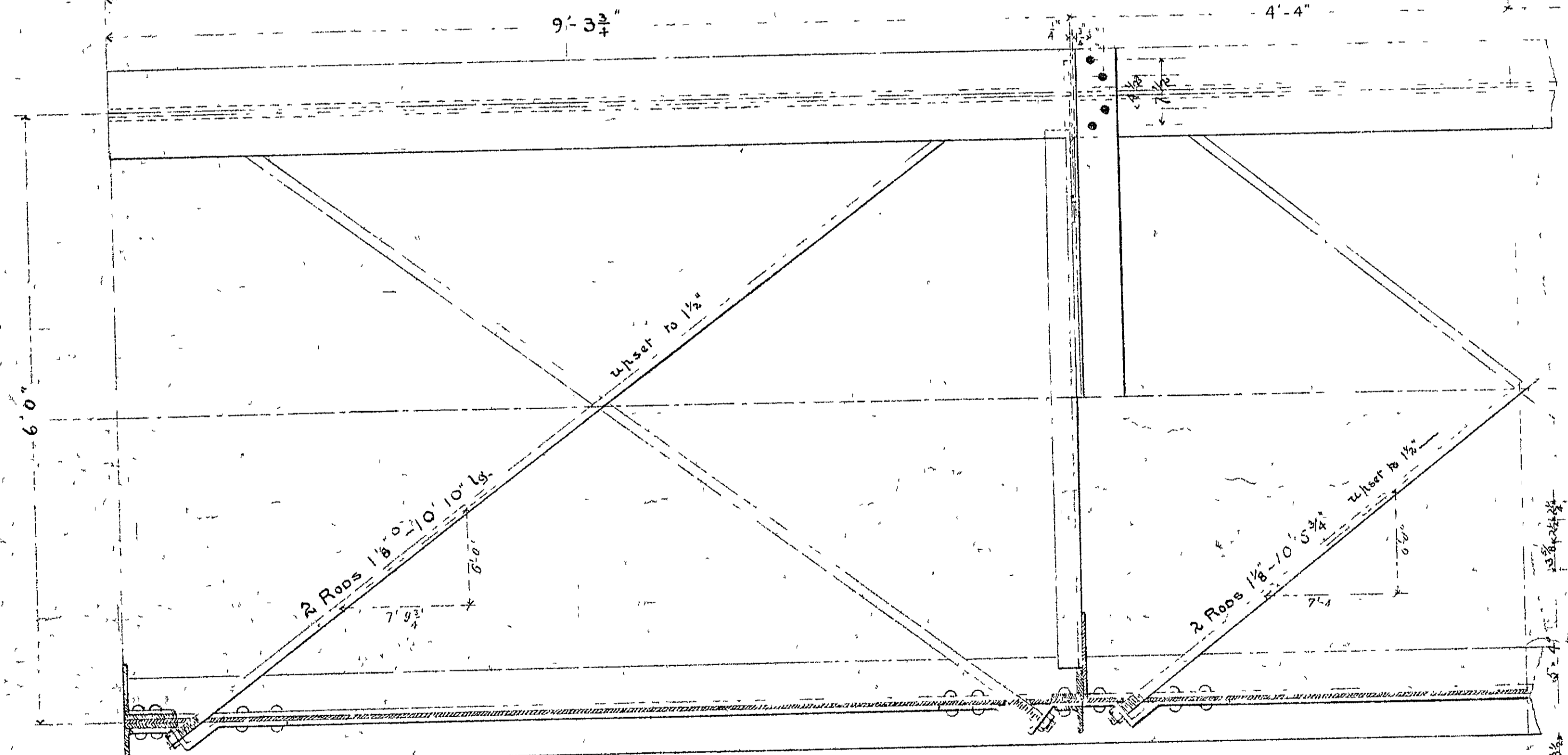
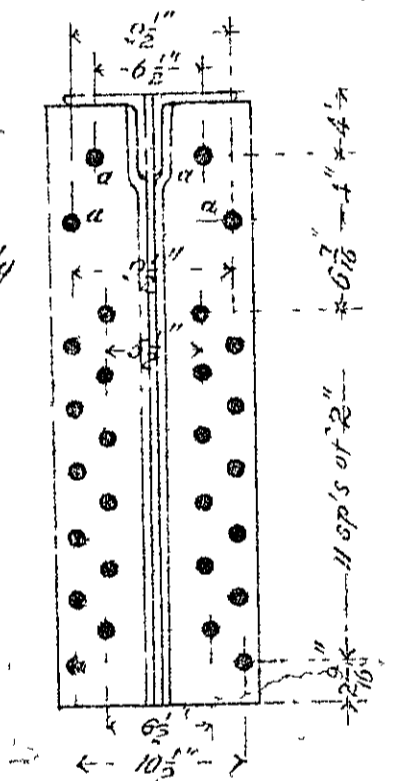


MAKE 36 CROSS FRAMES LIKE THIS
Weight of each 488 lbs

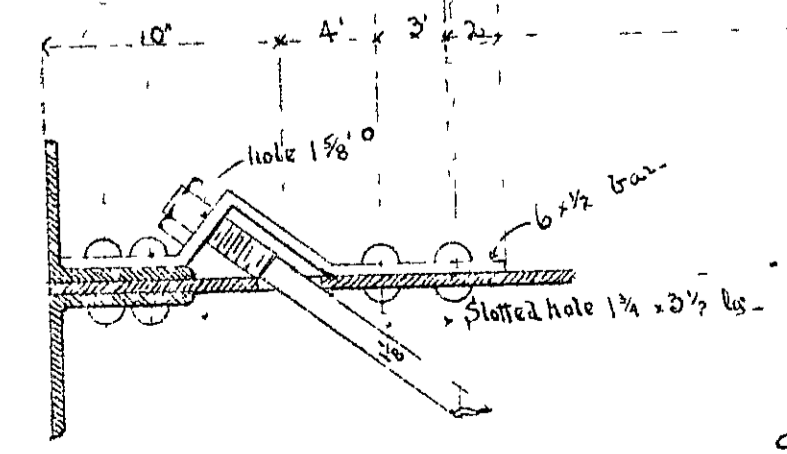


Holes for 1" turned bolts marked 'a' bolts above Hex nuts on both sides

MAKE 8 BRACKETS LIKE THIS
Weight of each 242 lbs



MAKE 2 FLOORBEAMS LIKE THIS MARKED L
Weight of each 1299 lbs



SKEW BACKS
SCALE 1 1/2"=1'

