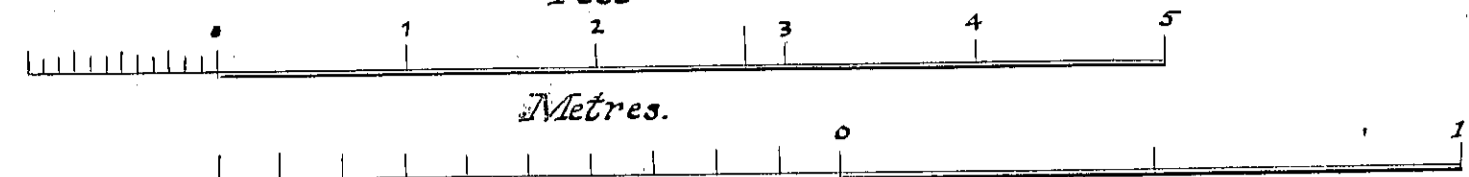


7/8" Rivets.

Scale: 1" 1ft.
Feet



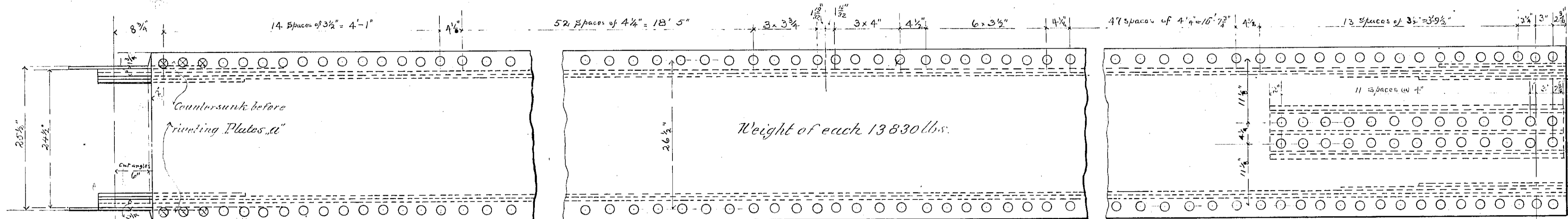
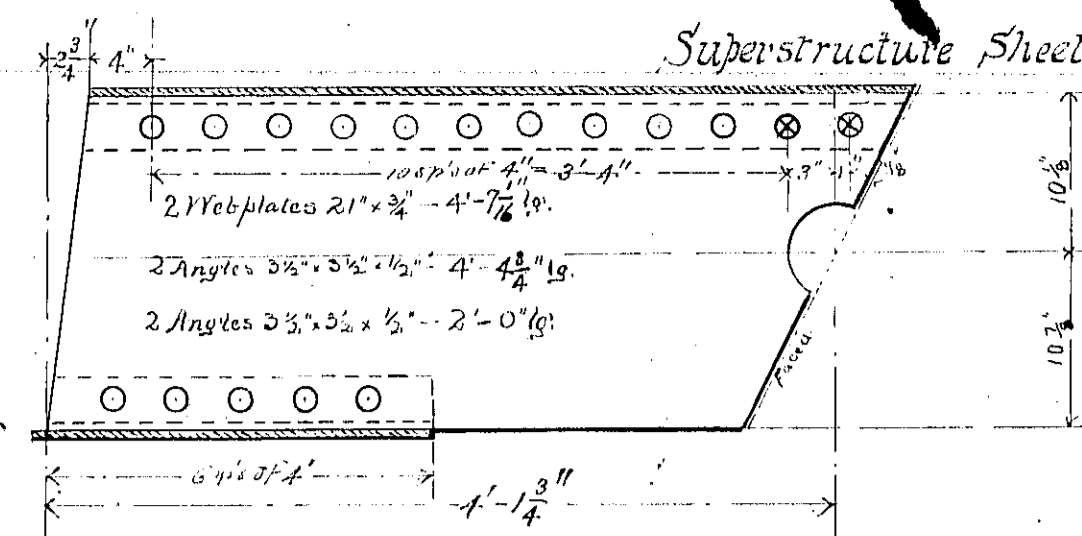
C.B.&Q.R.R.

BURLINGTON BRIDGE.

246'-0" Fixed Span; Double Track.

Superstructure Sheet A 2

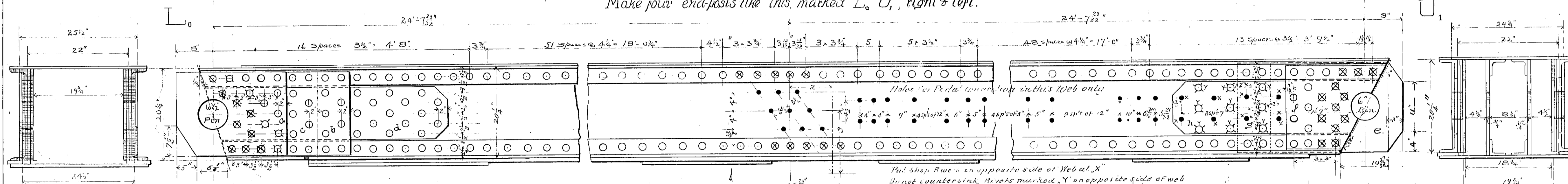
C.E. 8



Weight of each 13830 lbs.

- 1 Cover plate 30" x 1/2" - 19'-2 1/2" lg.
- 2 Web plates 20" x 3/8" - 49' - 11 1/8" lg.
- 2 Angles 4" x 4" x 3/8" - 49' - 11 1/8" lg.
- 2 Angles 4" x 4" x 3/8" - 45' - 10 5/8" lg.
- 2 Flats 5" x 3/4" - 46' - 6 15/16" lg.

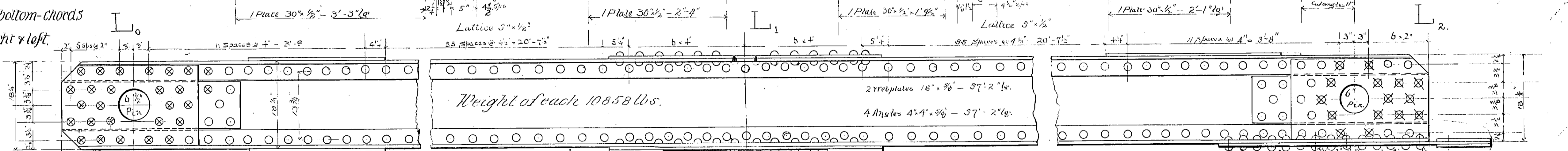
Make four end-posts like this, marked L, U, right & left.



- 2 Hinge Plates 18 3/4" x 1/2" - 2'-0" lg. manded.
- 2 Plates 18 3/4" x 3/8" - 2'-4 1/2" lg. - b.
- 2 Plates 20" x 3/8" - 2'-7 1/8" lg. - c.
- 2 Plates 12" x 3/8" - 4'-4 3/8" lg. - d.

- 2 Hinge Pl. 20" x 1/2" - 2'-5 1/8" manded @
- 2 Pl. 20" x 3/8" - 2'-4 1/2" lg. - g
- 2 Pl. 18 3/4" x 3/8" - 1'-10 1/8" lg. - f
- 2 Pl. 12" x 3/8" - 3'-9 3/8" - h.

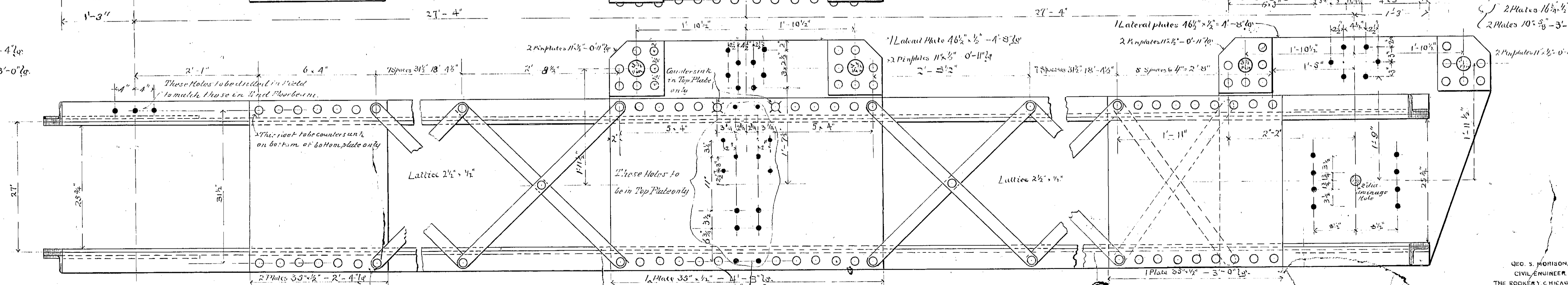
Make four bottom-chords like this, right & left.



Weight of each 10858 lbs.

- 2 Plates 16 3/4" x 1/2" - 2'-4" lg.
- 2 Plates 10" x 3/8" - 3'-0" lg.

- 2 Plates 16 3/4" x 1/2" - 2'-4" lg.
- 2 Plates 10" x 3/8" - 3'-0" lg.



WED. S. MORISON,
CIVIL ENGINEER,
THE ROCKERY, C. HICHA, ILL.
JANU. 20th 1890.