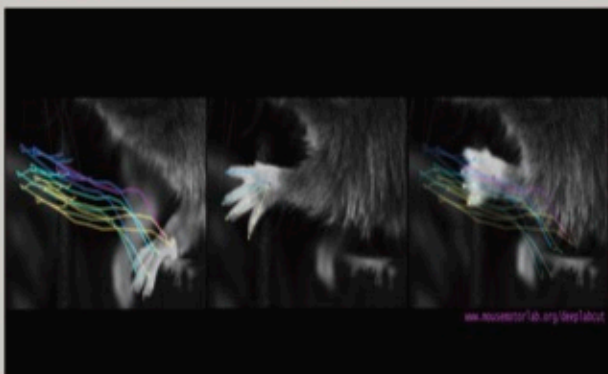


ROWLAND

The Rowland Institute at Harvard is seeking applications for Rowland Fellowships that commence in the 2019 calendar year. We seek the best young experimentalists in energy science and engineering in the broadest sense. The Rowland Fellowship provides an opportunity to establish an independent program within the rich intellectual environment at Harvard.

Dr. Edwin H. Land founded the Rowland Institute in order to foster high-risk, creative research. In 2002, the Rowland Institute became part of Harvard with the mission of advancing the careers of experimental scientists and engineers at an early career stage. In the tradition of Dr. Land, we are particularly interested in young scholars with the potential to establish a ground-breaking research program in their chosen field.

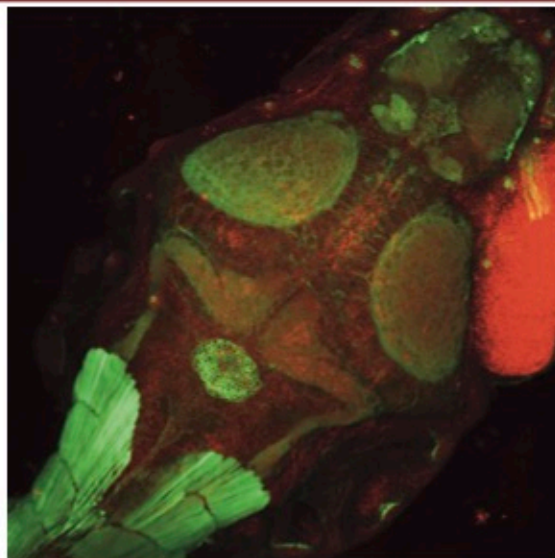


An example of an automatically tracked reaching movement in a mouse. The Mathis Lab develops deep learning tools to track parts of animals without markers. Mice are used as a model system to understand how the brain generates skilled movements.

RF M. Mathis

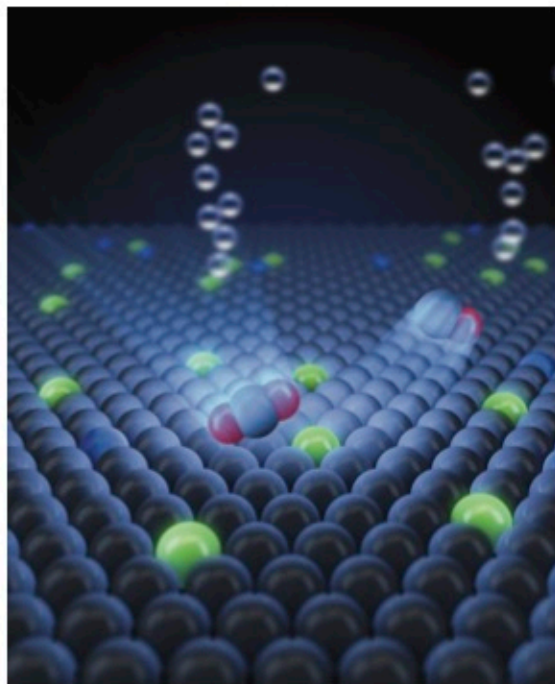
The Rowland Fellowships are restricted to experimentalists at an early career stage (not more than five years beyond the receipt of their doctorate). Fellowship awardees will receive funding for salary and research expenses and are allocated their own laboratory space. The Rowland Institute also provides technical support from permanent staff.

FELLOWS



Dorsal view of an immunofluorescently labeled 6 day post fertilization zebra fish brain.

RFs J. Li and D. Robson (photo courtesy of D. Schaak)



The metal single atom site presents significantly different catalytic behavior compared to bulk metals. The single atom catalyst can selectively and efficiently reduce CO₂ into CO with negligible hydrogen evolution side reaction.
RF Wang (figure published in CHEM)

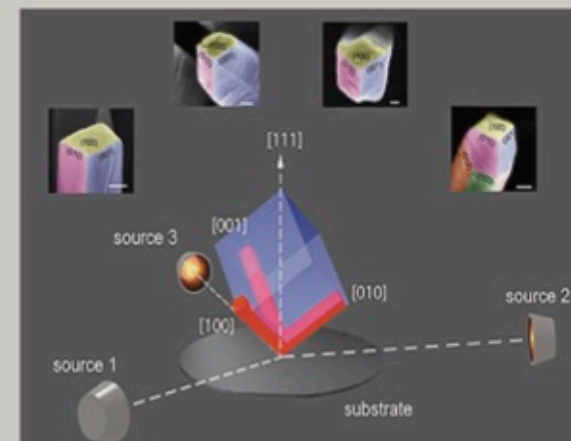
PROGRAM

The term of the fellowship is for up to five years, with a flexible start date. The stipend for Rowland Fellows will start at \$73,000 per year, depending on the candidate's experience. Fellows must have completed their doctoral degree prior to starting their term.

Instructions for applying to the program are to be found at the Rowland website:

www.rowland.harvard.edu/apply

The application deadline is **Aug. 17, 2018**.



Control of nanowire crystal orientation.

RF Y. Tao (figure published in Nature Communications)

Questions about the program should be directed to rf@rowland.harvard.edu or mail address:

Dr. Michael M. Burns
Rowland Fellows Program
Rowland Institute at Harvard
100 Edwin H. Land Boulevard
Cambridge, MA 02142 USA

www.rowland.harvard.edu

Harvard University is an equal opportunity employer and all qualified applicants will receive consideration for employment without regard to race, color, religion, sex, national origin, disability status, protected veteran status, gender identity, sexual orientation, pregnancy and pregnancy-related conditions or any other characteristic protected by law.



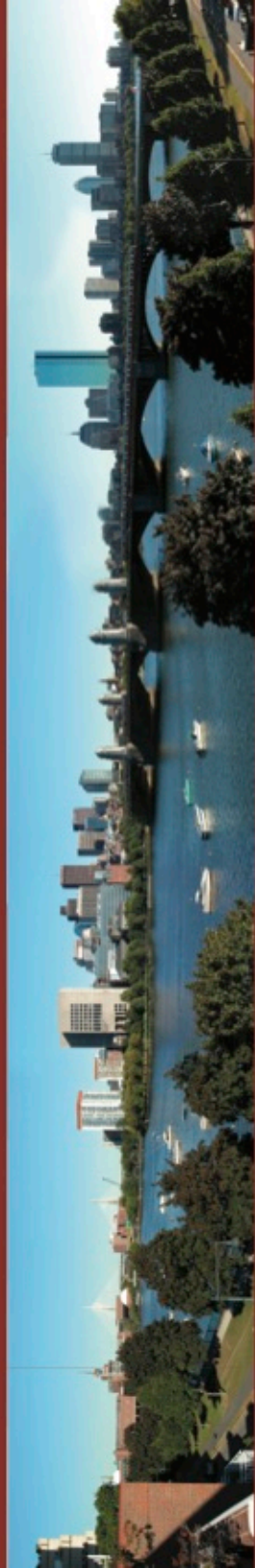
RFs (Left to Right): Congreve, Cira, Mathis, Robson, Li, Taute, and Wang. *Not Pictured: RFs Brucker & Tao*

The Rowland Fellowship provides an unparalleled opportunity to establish an independent research career. We seek the best young experimentalists in energy science and engineering. We look forward to learning about your innovative ideas.



Director Cynthia M. Friend

www.rowland.harvard.edu



Panoramic view of Boston taken from the Institute

Rowland Institute at Harvard
100 Edwin H. Land Boulevard
Cambridge, MA 02142 USA

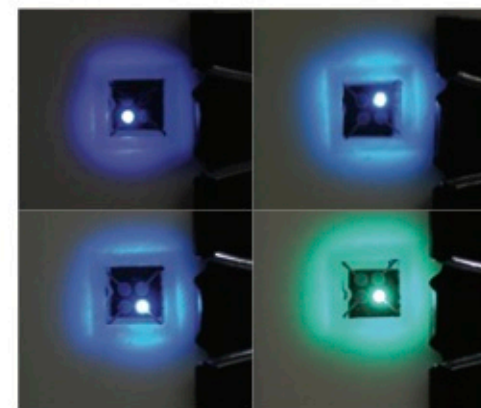
Cover image - Tuning of chemical composition adjusts the color emitted by the LED from blue to green.

RF D. Congreve (Figure published in March 2018 Advanced Materials)

ROWLAND INSTITUTE AT HARVARD

ROWLAND FELLOWS PROGRAM

IN
ENERGY SCIENCE
AND ENGINEERING
www.rowland.harvard.edu



2019