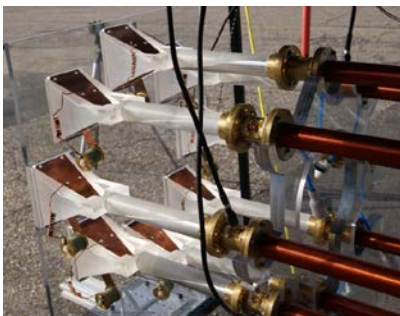
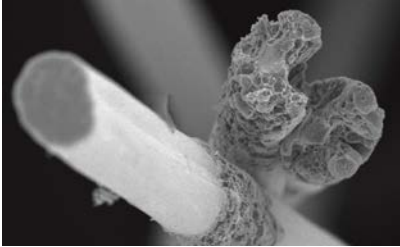


2017



TEXAS TECH UNIVERSITY
Edward E. Whitacre Jr.
College of Engineering™



Faculty Opening in Electrical and Computer Engineering Texas Tech University

Texas Tech University - The Department of Electrical and Computer Engineering (ECE) is inviting applications for a tenure track position at the assistant/associate/professor level. The candidate should have a background in research related to **Electrical Engineering** in the areas of **Pulsed Power**, **Power Electronics** and **Power Systems**, or **Transient Computational Electromagnetics**, or other closely related fields to complement a large existing Research Center.

An earned doctorate in Electrical Engineering or a field closely related to the search is required. The successful candidate is expected to teach existing undergraduate and graduate courses, develop new courses, and build a strong research program in Electrical Engineering and Electro-Physics related endeavors, including securing external funding and generating archival publications. A readiness to engaging in professional service activities, as well as collaborating within the department and across disciplines is expected. All



applicants must be eligible for a US secret clearance. Applicants are encouraged to email a CV, a cover letter including a brief statement of research and teaching interests, and the names of at least three references to <http://www.depts.ttu.edu/hr/workattexastech/> referencing requisition number 11292BR. Copies of the application should be emailed to the search committee chair Andreas.Neuber@ttu.edu.

As an Equal Employment Opportunity/Affirmative Action employer, Texas Tech University is dedicated to the goal of building a culturally diverse faculty committed to teaching and working in a multicultural environment. We actively encourage applications from all those who can contribute, through their research, teaching, and/or service, to the diversity and excellence of the academic community at Texas Tech University. The university welcomes applications from minorities, women, veterans, persons with disabilities, and dual-career couples.

ABOUT THE COLLEGE: The Whitacre College of Engineering is home to seven academic departments (chemical, civil & environmental & construction, electrical & computer, industrial, mechanical, petroleum, and computer science), offers over 30 degrees to nearly 6,600 students including more than 850 graduate students. Research funding has grown substantially, with research awards totaling \$15.4 million in the last fiscal year. The major research strengths are in wind-science & engineering, pulsed power and power electronics, microscale and nanoscale devices and semiconductor materials, medical imaging, bioengineering, energetics, intelligent software systems, and polymer materials. Texas Tech University, classified as a Carnegie Doctoral/Research University, enrolls approximately 35,000 students in 10 colleges.

ABOUT THE CITY: Lubbock, with a population of over 230,000, has a reasonable cost of living index; the city's diverse economy is sustained by TTU, a large healthcare industry, abundant retail shopping and restaurants, agriculture, manufacturing and oil/energy. Three independent school districts and numerous private/religious schools offer excellent educational opportunities for families. Lubbock Preston Smith International Airport provides travel convenience from several national airlines. The Texas South Plains enjoys stunning sunrises and sunsets and pleasant weather associated with its 3,250 foot elevation, 265 days of sunshine per year, and a friendly southwestern climate.