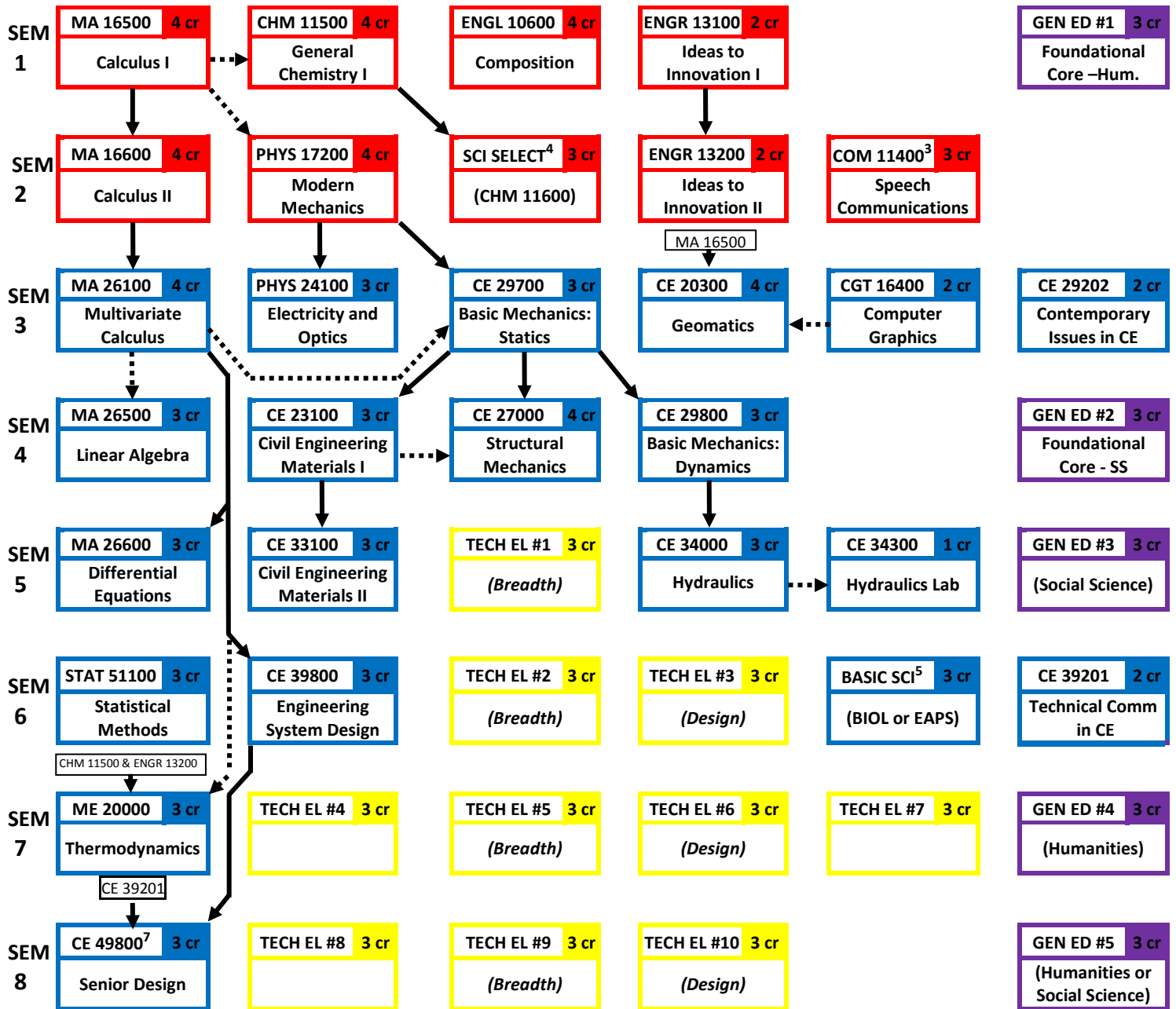


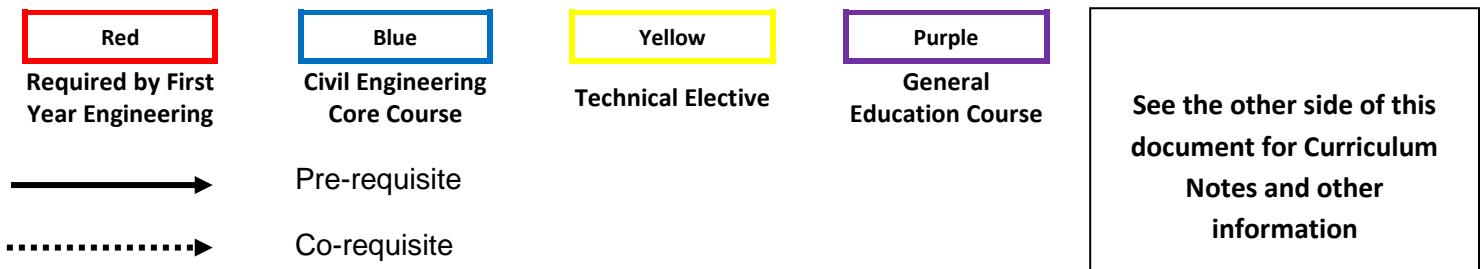
Civil Engineering Curriculum Flowchart^{1,2}

Beginning
Fall 2014



See Foundational Core STS Requirement⁵

Legend:



Italics: suggested Technical Electives listed on next page; total of 30 cr. required

Curriculum Notes:

1. This flowchart shows the standard CE course requirements and the typical sequencing of such courses. **Some deviations, both in courses and sequencing, can occur; students should speak to their advisors or the CE Undergraduate Office for further information.**
2. Students should consult the following CE website for guidance on the requirements for Technical Electives* and General Education Elective courses, respectively and the limitation on transfer credit:
<https://engineering.purdue.edu/CE/Academics/Undergraduate/Current>
Click on the "Technical Elective Policy", the "General Education Electives" or the "Transfer Credit Policy" on the right side bar to see the pdf documents. Students may also contact their faculty advisor or the CE Undergraduate Office for further information. In particular, it should be understood that the sequence shown for Technical Electives and General Education courses is a suggestion and can be modified as needed. Suggested Technical Electives are listed below.
3. COM 11400 satisfies the First Year Engineering general education requirement as well as the Oral Communication Foundational Outcome. The Lyles School of Civil Engineering, however, requires this course for graduation (subject to core policy rules) and does not consider it to be a general education course.
4. The Science Selective strongly recommended by the School of Civil Engineering is CHM 11600. Other choices for the Science Selective will be accepted for meeting graduation requirements, but students may find themselves at a disadvantage when choosing technical electives if they have not taken CHM 11600.
5. The Basic Science Requirement courses are chosen from an approved list. Examples include: BIOL 11000, 12100* & 28600, 14600, 23000 or EAPS 10000* 10400*, 11100, 12000*, 22100. See advisor for current approved list. Choose starred * courses to meet the Foundational Core STS (Science Technology & Society) if not satisfied by other general education courses. Also refer to <http://www.purdue.edu/provost/students/s-initiatives/curriculum/courses.html>
6. The Lyles School of Civil Engineering faculty recommend ECON 25100 as a Foundational Behavioral/Social Science (BSS) general education course.
7. CE 49800 must be taken in a student's final semester before graduation. The only exception to this rule is that students who plan to graduate during a summer session may take CE 49800 during the prior spring semester.

***Excerpt from Technical Elective Policy**

Breadth requirement: At least four (4) courses must be completed from the following list, guaranteeing sufficient breadth of study in at least four of the emphasis areas:

ARC: CE 31100 - Architectural Engineering

CON: CE 22200 - Life Cycle Engr & Mgmt of Constructed Facilities

ENV: CE 35000 - Intro to Environmental and Ecological Engineering

GEM: CE 40800 - Geographic Information Systems in Engineering

GEO: CE 38300 - Geotechnical Engineering I

HYD: CE 44000 - Urban Hydraulics

STR: CE 37100 - Structural Analysis I

TRA: CE 36100 - Transportation Engineering

Design content requirement: At least three (3) courses must be completed from the following list, guaranteeing sufficient design content:

ARC: CE 41300, 41400

CON: CE 52200, 52300, 52700

ENV: CE 35300, 45600, 45700

HYD: CE 44000, 54300, 54600, 54900

TRA: CE 36100, 46100, 56200, 56300, 56500, 56700

GEM: CE 30300, 30600

GEO: CE 48300, 58300, 58400, 58500

MAT: CE 53000, 53500

STR: CE 47000, 47300, 47900