



CIVIL ENGINEERING TRANSITIONS

Newsletter from Purdue University

Vol.3 Issue1 Winter 1998-1999

School mourns loss of Emeritus Professors John M. Hayes and William L. Dolch



John M. Hayes

John M. Hayes, professor emeritus of structural engineering, passed away on February 23, 1998, at age 88. Professor Hayes taught at Purdue from 1948 to his retirement in 1975, though he remained active as the Purdue Student Chapter of ASCE contact member up to his death. We will miss John's special way he greeted people - a tip of the hat, or his endless supply of "civil engineering literature," or his hello in a multitude of foreign languages. More on Professor John Hayes on page 11.

William (Bill) L. Dolch, professor emeritus of engineering materials, died July 6, 1998, after an extended

continued on page 11

First Olson Distinguished Professor Named



Professor Kumares C. Sinha (right), the Edgar B. and Hedwig M. Olson Distinguished Professor, with Rick Olson (BSCE '76, MSCE '77) (center, representing the Olson family) along with Professor Drnevich.

The Purdue Board of Trustees has named Kumares C. Sinha, director of the Joint Highway Transportation Program and head of Transportation and Infrastructure Systems in the School of Civil Engineering as the first Edgar B. and Hedwig M. Olson Distinguished Professor of Civil Engineering. The funding for this civil engineering professorship was established by Edgar B. Olson, BSCE 1951 and Hedwig Olson, MS 1954. Mr. Olson was chairman of the board and past president and owner of Kettelhut Construction Co., Inc., Lafayette, Indiana.

Dr. Sinha received his doctorate in transportation engineering from the University of Connecticut and has been on the Purdue faculty since 1974. He has over 34 years of experience in teaching, research, and professional practice in transportation engineering and management. He has authored or co-authored more than 250 technical publications. In 1980 he was a visiting professor at MIT and at Roorkee University in India in 1981.

Dr. Sinha has been the recipient of numerous awards for his contribution to civil engineering.

— by Lois Rans

Help today's CE students by remembering those who helped you.

You will find on the inside back cover an opportunity to show your appreciation for the wonderful teachers and mentors at Purdue. In this issue of *Transitions* and in the Winter 1997 issue, we reported that six of our faculty have died in the last two years. Their service at Purdue covered the periods from 1946 to 1998.

Check on page 26 to learn about the Memorial Funds that have been established in the School of Civil Engineering by their families to help improve the opportunities for civil engineering students.

DOLCH

HAYES

LEONARDS

WALING

WOLSZON

WOOD

Civil Engineering Advisory Council

Nicholas J. Aschliman
ATC Associates

Walter C. Bell
Union Railways Limited, UK

Joseph Broyles
Indianapolis Water Company

William F. Brumund
Golder Associates

Christopher B. Burke
Christopher B. Burke Engineering

Dennis J. Drag
Moffatt & Nichol Engineers

Harold Force
Force Construction Company, Inc.

Susan M. Frey
CH2M Hill

David S. Gedney
Fluor Daniel

William H. Highter
University of Massachusetts
Transportation Center

Charles W. Hoppe
Hoppe Consulting

Angela T. Jenkins-Kirby
DuPont

John M. Knapp, Jr.
General Mechatronics Corp.

James A Maple
J. A. Maple & Associates

Za-Lee Moh
Moh and Associates, Inc.

Alex D. Oak
Paul I. Cripe, Inc.

Michael A. Pierle
Solutia Inc.

Dennis E. Roby
ADM Design Services

Roy Wansik
Consultant



In this issue...

How does Purdue CE meet vision
to have unrivaled impact on
civil engineering worldwide.

Dr. Drnevich discusses strategic plan 3



Support CE students through gift to faculty memorial funds

See story on pages 26-27

Faculty Features	4-5
New Faculty and Staff	4
Faculty News	5
Student Highlights	8
Scholarships & Awards	
Class Notes	12-14
Civil Engineering Honor Roll	18-23
Individual Donors	18-22
Corporate and Foundation	23
Calendar of Events	Back Page

Editor	Donald R. Fry
Assistant	Linda Higgins, Jean Bibby
Contributing writer	Lois Rans
Design & Layout	Rod Heckaman / EPO

School Develops Strategic Plan

The past year has been full of excitement. With significant input from faculty and our Advisory Council, we completed a draft Strategic Plan for the School. (Because we consider it to be a dynamic document, it always will be a draft.) Our vision is for the School to have unrivaled impact on civil engineering worldwide.

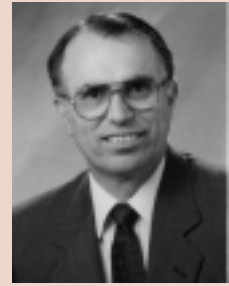
- ▼ Two interactive task forces are making progress on the first two goals. Their work is especially challenging because Engineering Criteria 2000 (the new accreditation criteria from the Accrediting Board for Engineering and Technology) is fundamentally different from previous accreditation criteria. The old criteria was process based whereas the new criteria is outcomes based. This difference is similar to the difference between “method specs” and “performance specs” in engineering practice.
- ▼ The third goal is important because the stature of the School is many times benchmarked on the accomplishments and leadership of people who receive graduate degrees.
- ▼ The fourth goal, recruiting and retaining quality students, is of ever increasing importance for both the undergraduate and graduate programs. High school students today are less inclined to choose professions like engineering for their careers than students of previous generations. You can help with this one by visiting local high schools to help counselors and teachers stimulate interest in engineering as a career. The demand for engineers in the work place is so great that many graduates, who once might have considered going for a graduate degree, are going directly into the workforce. Many expect to continue their education on a part-time basis. Last year, the ASCE Board of Directors approved a motion to “support the concept of the master’s degree as the first professional degree leading to the professional practice of engineering.” The whole civil engineering education community is looking at this and determining how we should respond and how this might be implemented. I will be participat-

ing in an ASCE Committee to examine this issue more deeply and look for ways to implement it.

Professor Julio Ramirez was recently named director of Graduate Studies for the School. He brings tremendous energy and enthusiasm to the task of recruiting graduate students. Thanks to the late Edgar Olson and his wife Hedy, we have some substantive graduate fellowships to attract quality students to our School. Professor Ernest (Chip) Blatchley led an effort to the U.S. Department of Education to continue funding Ph.D. degree fellowships for Graduate Assistance in Areas of National Needs. More government and private support like this is needed as we stay positioned at the top among peer institutions.

This past year, the University Board of Trustees approved a “Differential Engineering Technology Fee.” This \$100 fee is added to regular tuition and fees paid by students enrolled in engineering at Purdue. In July, we received more than \$90,000 for use in the 1998-1999 school year for undergraduate lab equipment and support. Several labs have already been upgraded. With a continuation of these funds and generous gifts from our alumni, friends, and corporate supporters, our students will continue to have exceptional educational experiences, and we will realize our vision of unrivaled impact.

Last summer we completed renovations of approximately half of the environmental engineering laboratories on the third floor. Our appreciation goes to Professor Chad Jafvert, who led the faculty and staff effort to secure a grant from the National Science Foundation for this work. Purdue University had to match the NSF funds, one for one. Let me thank all of you who assisted us in meeting this match by your gifts to civil engineering. We also just completed renovations to a portion of the hydraulics laboratory where the rainfall simulator used to be, and now we have quality space for the undergraduate hydraulics course, CE 340 (remember it?). Other renovations included the Global Positioning Laboratory in the old Photographic Lab area of our building.



Dr. Vincent P. Drnevich
Professor and Head
School of Civil Engineering

Priority Strategic Plan Goals

- ▼ 1. Review of the undergraduate curriculum
- ▼ 2. Assessment/improvement of the undergraduate program
- ▼ 3. Enhanced commitment to graduate education/research
- ▼ 4. To recruit and retain the world's best civil engineering graduate students

This is an exciting place! I could go on describing all the neat and wonderful things that our faculty, staff, students, and alumni are doing. Many of them are reported in this issue of *Transitions*. We are especially proud of Dr. Delon Hampton, P.E., who was elected to the position of president elect of ASCE. Shortly after the election, he visited Purdue, spent time with the student members of our Student Chapter, and gave the luncheon address at the Civil Engineering Professional Development Seminar that is cosponsored by our School and the Indiana Section of ASCE. I invite you to visit with us during Gala Week, at Homecoming, or whenever you are in the area to see firsthand these wonderful things and the changes that have taken place. We appreciate the interest and support of our alumni and include their accomplishments in our vision for unrivaled impact worldwide.

Best regards,
Vince Drnevich

New Faculty & Staff



Darcy Bullock



Adam Hand



Jie Shan

Darcy Bullock joined the School as an associate professor in January 1998 in transportation engineering. He received a B. S. in Civil Engineering from the University of Vermont in 1987, a M.S. in 1988, and a Ph.D. in 1992 in Civil Engineering from Carnegie Mellon University. Bullock is a registered professional engineer in the states of Louisiana and Indiana. Prior to joining the Purdue faculty, he was an associate professor in the civil engineering department at Louisiana State University.

Bullock's teaching and research interests are in the general area of Intelligent Transportation Systems (ITS). Over the past several years he has been involved in developing the hardware and software architecture for the next generation of ITS traffic signal controllers. He is currently working on several sponsored projects involving real-time traffic signal systems.

Adam Hand joined the School of Civil Engineering in August as an assistant professor. He received his Ph.D., MSCE, and BSCE from the University of Nevada, Reno, where he also held an administrative faculty appointment as a research engineer.

His specific area of interest is in transportation materials. When the Western Regional Superpave Center (WRSC)

was established, he led Superpave performance test equipment shake down and ruggedness testing efforts. He performed multiple Superpave mix designs and forensic analyses through the Center. Hand also delivered multiple training courses in both Superpave binder and volumetric mix design.

Hand's initial involvement in the \$14.5 million FHWA WesTrack project was in conventional and Superpave mix design efforts. Subsequent to that phase of the project, he was asked to take responsibility for HMA process control operations during construction and rehabilitation, and quality assurance and material characterization after construction.

He and his wife Wendy have three children, Cody, Lindsey, and Chelsey ranging in age from seventeen months to five years.

Jie Shan joins the School beginning in January 1999. Dr. Shan received his B.Sc. and M.Sc. in 1982 and 1985 from Zhengzhou Institute of Surveying and Mapping in Zhengzhou, China. In 1989 he obtained his Ph.D at Wuhan Technique University of Surveying and Mapping, Zhengzhou, China. From 1989 to 1994 he worked as assistant professor, associate professor (since 1990) and senior research director at Zhengzhou Institute of Surveying and Mapping. As an

awardee of Alexander-von-Humboldt Foundation, he spent two years (1995-1996) doing intensive research at Stuttgart University, Germany. Before joining Purdue, Dr. Shan was a senior lecturer at the University of Gävle, Sweden.

Dr. Shan's research experience has been precise point determination by integrating heterogeneous geomatics measurements, digital mapping from aerial as well as satellite imagery, semi-automatic terrain model and geographical feature extraction from digitized images, and photogrammetry for ocean topography. His current research interests are geometric modeling in computer vision and photogrammetry, automatic geospatial information extraction by data fusion, and visualization of 3-D geographical information, particularly in the Web environment.

He is married to Jijun Lei and father of 5-year-old son XinXin.

Correction: In the last issue, new faculty member Antonio Bobet was listed incorrectly. Bobet is an assistant professor in geotechnical engineering.

Faculty News

Professor Mete A. Sozen, Kettelhut Distinguished Professor, received the 1998 Lifetime Achievement Award from the Illinois Section of the American Society of Civil Engineers.

A Steel Design Handbook with a chapter contributed by **Professor W. F. Chen**, Goodwin Distinguished Professor, and his former student, Dr. J. Y. Ricard Liew, won the 1997 highest award of excellence given by the Association of American Publishers to McGraw-Hill.

The Civil Engineering Handbook edited by **Professor Chen** and contributed to by Purdue faculty and former students, published by the CRC Press in 1995, will be translated/reprinted in India in. The handbook is the winner of the "Choice Outstanding Academic Book Award" for 1996-Choice Magazine.

Professor Chen was inducted as a new honorary member of the American Society of Civil Engineers. Professor Chen has been elected as an Academician of Academia Sinica. Professor Chen also received the Honorary Professorship from Xian Jiao-Tong University, Xian, China.

A new book entitled *Theory of Adaptive Structures* by S. Utku was published under the CRC Series in New Direction in Civil Engineering edited by Professor **W. F. Chen**, 1998, 269 pages.

Professor Mirek Skibniewski received the American Society of Civil Engineers' 1998 Walter L. Huber Civil Engineering Research Prize. The award citation reads: "for his research and development of decision support tools for planning and implementation of automated construction technologies and related technical innovations in construction."

Professor Dan Budny received the A. A. Potter Teaching Award. In addition, Professor Budny received the Freshman Engineering Teaching Award.

Professor Mark Bowman received the Ross Judson Buck Best Counselor Award.

Professor Boudewijn H. W. van Gelder received the Civil Engineering Harold



Boudewijn H. W. van Gelder

Munson Award for Best Teacher.

Professor Kumares C. Sinha, Olson Distinguished Professor, has been appointed to the Transportation Research Board Division A Council for a three-year term. Division A is responsible for all technical activities of TRB and oversees 190 standing technical committees. Professor Sinha has also been reappointed to the Transportation Education Committee for a three-year term.

Professor Patrick Fox is one of two winners of the Casgrande Professional Development Award of ASCE. This award is given in recognition of outstanding accomplishments as evidenced by completed works, reports, or papers in the field of geotechnical engineering. It is intended to further the professional development of an outstanding practitioner, researcher, or teacher of geotechnical engineering.

Professor Chuck Scholer received the Public Service Award from Consulting Engineers of Indiana (CEI). The award is presented each year to a non-member either associated with state or local government, another association, or university, who has made a significant contribution to the engineering profession.

Consulting Engineers of Indiana also presented a Grand Project Award. This award recognizes an outstanding engineering achievement that demonstrates a high degree of merit and ingenuity. The winning project is eligible for entry in the national competition. Butler, Fairman & Seufert, Inc., won the award

Staff

Josh Hogle is the civil engineering computer site specialist. Josh joined Civil Engineering as a work-study student, working as the "hardware specialist" until being hired as a full-time assistant computer systems analyst in October 1997. In April 1998, he became the site specialist.

Joshua Harley joined the School as assistant computer site specialist. Joshua graduated from Purdue with a B. S. in Mechanical Engineering in December 1997. During the past year he has been employed by the University for the ECN Webmaster, which fueled his interest in computers, networking, and web development.

Brian Knoy has joined the School as business manager. He graduated from Krannert School of Management in May 1996 and has been employed with the University for 2 1/2 years.

Tom Martin has been named the program manager for HERPICC. Tom worked closely with Professor Chuck Scholer and the HERPICC Advisory Board during the last year. Tom joined Purdue in 1997 as research engineer for HERPICC. He is a graduate of Purdue receiving both his bachelors and master's degrees in civil engineering.

Lynn Warble has transferred from HERPICC to the Superpave Center as communications specialist. Lynn began her new position on August 17.

Teresa Vaughn joined the Highway Extension Research Program for Indiana Cities and Counties (HERPICC) as training coordinator. Theresa received her associate degree in office administration from Indiana State University. Prior to joining Purdue, Teresa lived in Florida where she was a management member of the independent insurance firms. Teresa returned to Indiana this past summer and is residing in her native Fountain County.

continued on page 17

CE Alumni Honored - Distinguished Engineering Alumni

Civil Engineering alumni were honored in 1998 by Purdue in recognition of the outstanding achievements of these individuals and the lasting contribution they have made to their professions.

Christopher B. Burke
 BSCE 1977, MSCE 1979, PhD 1983
 President, Christopher B. Burke
 Engineering Ltd.

From working as a crew member for his father's surveying crew, Christopher Burke utilized many of his learning experiences when founding Christopher B. Burke Engineering Ltd. in 1986. The Rosemont, IL, firm served as project manager for more than 1000 projects and has grown to 180 employees. Clients include the city of Indianapolis, Indiana Department of Natural Resources, U.S. Corps of Army Engineers, Illinois Department of Transportation and city of Chicago. The firm has won awards for five projects by Consulting Engineers Council of Illinois and a Meritorious Service Award by Chicago Metropolitan Chapter of the American Public Works Association. In 1997 CBBEL won the Private Sector Employer Recognition Award and in 1998 Dr. Burke was selected president of the Illinois Section of American Society of Civil Engineers.

Suwat Liptapanlop
 MSCE 1977
 Member of Parliament (Thailand)

As a young student from Thailand, Suwat Liptapanlop had to overcome many barriers in order to follow his dream of becoming a civil engineering graduate of Purdue University. Returning to his homeland he expected to enter the family's contracting business but instead was drafted into the world of politics. In 1988 he was elected as district repre-



President Beering congratulates Christopher Burke (left) and Suwat Liptapanlop (below) on being awarded the Distinguished Engineering Alumni Award.

sentative to the parliament of Thailand at the age of 35 and was selected by the prime minister to serve as a cabinet minister. Later, he was chosen to help draft a new constitution for his country. He served as Minister of Science, Technology and Environment and became Minister of Transport and Communications in 1996. This last appointment was one of great honor for Liptapanlop because he was able to put his civil engineering training to good use.



Civil Engineering Alumni Achievement Awards

The CE Alumni Achievement Awards are based on the awardees' distinguished careers, which reflect credit on the value of a Purdue University civil engineering education. The awards are given by the School of Civil Engineering, based on approval of the faculty.

Civil Engineering Alumni Achievement Award recipients include **William F. Daily**, BSCE '59, MSCE '60, who started his engineering career at Precast Industries in Kalamazoo, Michigan. Daily has been influential in the precast/prestressed fabrication industry and became president/CEO of Hamilton Form Company in 1973. Mr. Daily has twice served on the Board of Directors of the Precast/Prestressed Concrete Institute and has been honored with a Fellow Award from PCI for his outstanding contributions to the industry.

Vasiliki Keramida, BS '73, MSCE '76, PhD '79, is an award recipient who came to the U.S. from Athens, Greece, in 1969. She founded the Indianapolis-based firm of KERAMIDA Environmental, Inc. in 1988. She is a researcher, author, and lecturer in the environmental field and is a recognized authority on the investigation and redemption of contaminated wastes sites. Dr. Keramida is the author and co-author of numerous technical manuals and textbooks. She has advised the U.S. EPA and IDEM and serves on various environmental committees, including the Board of Directors on Environmental Quality Control, Inc.

Eugene A. Lamberson, BSCE '63, MSCE '65, comes from a family tradition of contracting and civil engineering. After graduation, Lamberson relocated to Chicago where he joined The Reinforced Earth Company and now manages a five-state midwestern area. Lamberson was a charter member of the Purdue Civil Engineering Advisory Council and is a licensed professional engineer in nine states. He is a holder of patents for a highway noise abatement system and

an earth railroad bridge crash wall design. Lamberson counts as his proudest achievement the 10 successful design-build contracts that changed the face of the Borman Expressway in Hammond, Indiana.

Shortly after graduation from Purdue, **Alex D. Oak**, BSCE '68, started working for one of Indiana's oldest design firms and became a partner in 1977. His professional projects have included the Giest and Morse Reservoirs development, White River State Park Canal development and Ameritech's Digital Technology Statewide Communication System. Oak has also helped found the Paul I. Cripe Charitable Foundation that awards grants for college level education opportunities and is active in Big Brothers of Greater Indianapolis.

Franklin E. Woodard, PhD '65 is president of Woodard & Curran Inc., an environmental consulting firm founded in 1979. While working on his Ph.D. dissertation at Purdue, he developed a method of removing lignin from pulp and papermill wastewater discharges. Dr. Woodard is the author of fifty publications and reference journals written during his tenure as professor at the University of Maine. His private consulting business has been credited with a wastewater treatment system for a poultry process that enabled highly efficient treatment at a very low cost and is a standard treatment technology for the poultry processing industry.



Franklin Woodard, Alex Oak, Vasiliki Keramida, William Daily, Eugene Lamberson

Scholarship & Awards

Tony Clark Awards

Rebecca Best
 Ian Byers
 Kimberly Cole
 Joseph Draves
 Bethany Garretson
 Heather Guinn
 Matthew Hopper
 Aimee Kivett
 Hoi Lau
 Choon Ong
 Thomas Pace
 Jason Petty
 Stephen Spitzer
 Michael Winarta

Martin J. Gutzwiller Memorial Scholarship

Kai K. Mow
 Max L. Johnson, Jr.
 Nicole S. Speece

Harold E. Rein Society of American Military Engineers Scholarship

Adam W. McAlpine
 Matthew T. Goubeaux

Greeley and Hansen Elmer F. Ballotti Memorial Fellowship

Brandon K. Ogilvie

John R. Blandford Memorial Award

Jose Fabrega

Don E. Bloodgood Memorial Award

Deb Behles
 Kim Nichols
 Jeremy Schmidt
 Alyson Wilson

Jacques W. Delleur Award

Krishnakumar Nedunuri

Matthew Edward Kern Environmental Engineering Scholarship

Kathryn Meschede
 Andrew Thompson

Phillips Petroleum

Ulrike Pfalzer

David E. Saks Memorial Pass-The-Torch Award

Bob Holden

Eldon J. Yoder Memorial Award

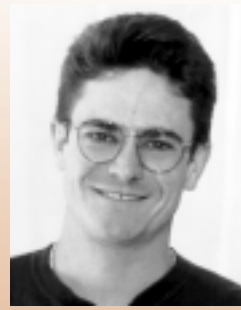
Darren Jorgenson
 Tracy Stover



Deb Behles



Glen E. Boren



Mark Bradford



Guillermo Carrasquillo

Myrtle Ford Tompt Award

Max L. Johnson
 Jeremy C. Schmitt

Gerrit H. Toebes Memorial Award

Dan Schuller
 Susan Tatolovich

Albert J. Horth, CE 1915 Memorial Scholarship

Guillermo Carrasquillo
 Robert Chandler
 Carrie Drake
 Ryan Glanz
 Steven Graves
 Heather Quinn
 Thomas Pace
 Elizabeth Porter
 Dan Thatcher
 Joseph Walsh

Roy E. and Myrna G. Wansik CE/Cary Quadrangle Scholarship

Aaron Fisher
 Tim Phelan
 Andrew Thompson

GAAAN Fellows

Ernest M. Berney
 Timothy M. Lapara
 Brian J. Malone
 Lisa M. Samples
 Jennifer Schramm
 Daniel J. Schuller
 Jonathan V. Weiss

Estus H. and Vashti L. Magoon Outstanding Teaching Assistant Award

Glen E. Boren
 Jodi L. Enderson

Nellie Munson Outstanding Teaching Assistant Award

Mark Bradford
 Dirk Medema



Steve Graves



Bob Holden

Rosemary K. Burke Outstanding Student

Max L. Johnson
 Kai Ki Mow

Land Surveying - Outstanding Senior

Ryan D. Carrel

Geomatics Faculty Recognition Award

Thomas P. Riley

John G. McEntyre Endowment Scholarship

Randy S. Peterson

Jud and Betty Rouch

Land Surveying Scholarship

Bryon J. Motszko

Roland S. Corning II Memorial Fellowship

Dave Vandenberg

Maple Point Foundation

Junfeng Leng

Asphalt Pavement Association

Aaron Fisher
 Jeremy Gries
 Roger Radabaugh

Fluor Daniel Corporation Scholarship

Kimberly Cole

more on page 16



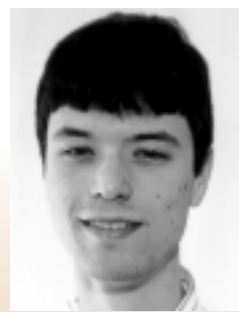
Robert Chandler



Jodi Enderson



Jose Fabrega



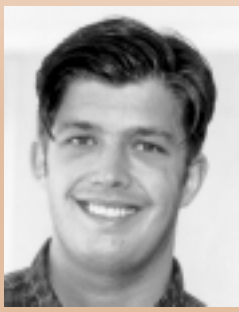
Aaron Fisher



Ryan Glanz



Max L. Johnson, Jr.



Darren Jorgenson



Junfeug Leng



Kathy Meschede



Bryon J. Motszko



Kai Ki Mow



Krishnakumar Nedunuri



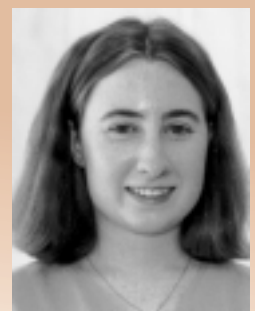
Kim Nichols



Tim Phelan



Beth Porter



Heather Quinn



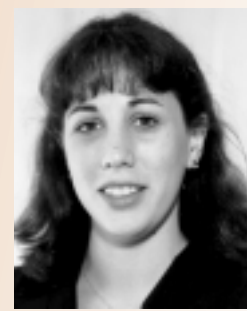
Jeremy Schmidt



Dan Schuller



Nicole Speece



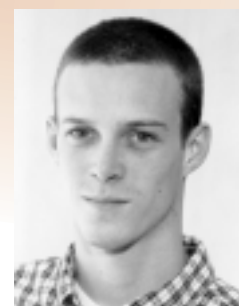
Tracy Stover



Susan Tatolovich



Dan Thatcher



Andrew Thompson



Dave Vandenberg

Civil Engineering Graduate Student Winner of Prestigious Fellowship



Darren Jorgenson

Congratulations to Darren Jorgenson, the recipient of an Eno Fellowship from the Eno Transportation Foundation of Lansdowne, Virginia. The Eno Fellows program provides up to ten student fellowships annually to help ensure retention of the best and the brightest individuals in transportation and encourages those with leadership abilities to recognize their strength and prepare for leadership roles.

Darren attended a conference in Washington, D.C., where students examine policy development and implementation processes that affect the transportation industry. In addition to the annual conference, the foundation provides follow-up activities to assist Eno Fellows with professional development and networking throughout their careers.

Darren is the son of Linda Hellerud of Maddock, North Dakota, and Jerry and Stephanie Jorgenson of Henderson, Nevada. Darren will graduate with his MSCE in transportation engineering in December.

Theresa Raffin (right center) and family attended the CE Commencement reception.



Ten Raffin Siblings Now Purdue Graduates!

Theresa Raffin graduated in August 1998, the youngest of Richard and Bernadette Raffin's 12 children. At least one of the Raffin's children has been attending Purdue every year since 1973. Theresa is the fifth Purdue Civil Engineering graduate in her family. Five others have Purdue degrees, four from the School of Consumer and Family Sciences and one from the School of Technology.

The Raffins are from Valparaiso, Indiana. Theresa works in Chicago for Alford Benesh and Company as a structural engineer. She was active in the ASCE student chapter while attending Purdue. Theresa's Purdue civil engineering siblings are: Al Raffin, *BSCE '80*; Jean Sangiorgio, *BSCE '83*; Jim Raffin, *BSCE '89*; and Margaret Mochen, *BSCE '90, MSCE '92*.

Hayes continued



(Right) Professor Hayes welcomes Governor of Mississippi D. Kirk Fordice (BSCE'56) back to Purdue.

Professor John M. Hayes honored by ASCE Student Chapter

John Hayes was born May 18, 1909, and raised in Wingate, Indiana. John received his BS degree in 1931 and worked for the Tennessee Valley Authority and the U.S. Bureau of Public Roads. While in Tennessee he earned an MS degree in engineering mechanics from the University of Tennessee in 1944 and later earned the professional civil engineering degree from Purdue in 1946. He was a licensed professional engineer in Tennessee and Indiana. Surviving are his wife of 63 years, Coye, and two daughters, Marian (Jernigan), of Lewisville, Texas, and Julia (Casey), of Dearborn, Michigan.

Professor Hayes joined the Purdue faculty in 1948 as an associate professor and was promoted to professor in 1958. His research centered on performance of highway and railway bridges including effects of vibration. Since retiring in 1988, Professor Hayes gave much of his time to Purdue students: He was a faculty fellow at Cary Quadrangle for many years. Professor and Mrs. Hayes attended annual ROTC recognition programs to present awards to recipients of the Sons of the American Revolution Award and Daughters of the American Revolution Award.

John sent cards and letters to many of his students and friends around the world and was always delighted to receive a reply, proudly showing off wedding or baby pictures to anyone to whom he talked. It has been said that Professor Hayes was the "Grand Old Man of 'The Grand Old Profession'." He was truly a remarkable man and advocate of the civil engineering profession.

His energy for the ASCE student chapter has been recognized by the School officially renaming the chapter to the John M. Hayes ASCE Student Chapter. A memorial fund has been established at Purdue and will be used to support the ASCE student chapter activities.

William Dolch

continued from front page



Bill Dolch in 1964 (left) and teaching a class in CE 631 in spring 1993 (above).

illness. He spent over 47 years at Purdue

In 1946 he returned to Purdue from the Navy and completed his undergraduate work in chemical engineering in 1947. He stayed on for graduate work at Purdue, receiving an MSc in Chemistry in 1949 and PhD in 1956. Bill served as a research associate in the School of Civil Engineering from 1947 to 1956. In 1956 he became an assistant professor of engineering materials. He was promoted to associate professor in 1960 and to professor in 1964. He retired as professor emeritus in 1993.

Bill served as area head of the Engineering Materials group in the School of Civil Engineering for more than thirty years until his retirement. During this period, he established a research program focused on the study of the physico-chemical properties of engineering materials in general and concrete in particular. He equipped one of the world's pioneering laboratories in this area. He also developed science-oriented civil engineering materials courses at both the undergraduate and graduate levels. Under his guidance, the materials program at Purdue became so successful that many of the leading universities in the U.S. and abroad emulated his teaching and research models.

Many honors came his way during his active and productive career. He received ASTM's Dudley Medal for meritorious research in materials and their Frank E. Richart Award. He was named a fellow of ASTM in 1977. He was a fellow of the American Concrete Institute, and in 1968 he was awarded the Wason Research Medal. In 1985, he was awarded ACI's prestigious Arthur R. Anderson Award. He was honored with a unique Bench Mark Award by the Army Corps of Engineers' class of 1993.

He is survived by his wife, Elaine, who is a professor emeritus of child development and family studies at Purdue. Surviving with his wife are daughter, Kathryn Ashbrook, and son, Eric Dolch, both of Grand Junction, Colorado.

1940

Leroy Greene, Carmichael, CA - Leroy has served more consecutive years in office than any other current California state legislator. His service ended in December 1998, when he decided to step down. He has no plans to "retire" as he and his wife plan to jointly run an education consulting firm. She will be lobbyist and consultant, and he will be a consultant. Leroy was first elected to the Assembly in 1962 and to the Senate in 1982.

1942

James E. Roembke, Frederick, MD - James is retired from Calvary Bible College, where he was vice president of business and finance.

1955

Dave Churchman, Castleton, IN - Dave is a proprietor for Sterling Type Foundry.

Richard D. Walker, Blacksburg, VA - Richard is a professor emeritus at Virginia Tech School of Civil Engineering.

1957

Don R. Ort, Cape Coral, FL - Don is a retired consulting engineer. He is a life member of the American Society of Civil Engineers, American Water Works Association, and Water Environment Federation. He is an honorary member and past president of the Indiana Water Pollution Control Association and also past president of the Illinois Water Environment Association. Don is a certified professional engineer in 14 states.

1958

Berton R. Bradley, Santa Monica, CA - Berton is a senior project manager for Crosby Mead Benton and Associates in Encino, CA. He served as ASCE Los Angeles Section President from 1970-71 and is currently a planning commissioner for the city of Santa Monica.

1959

Geza Cseri, McLean, VA - Geza is currently chief, Production & Arms of the U.S. Army Material Command in Alexandria, Virginia. He has oversight of U.S. ammunition facilities for making it a viable base in light of downsizing. There are 27 plants across the U.S. He was the agency's manager for the combined federal campaign and achieved

the highest contribution in the history of the agency. Geza also does consulting for small businesses.

1960

Richard R. Hall, Downers Grove, IL - Richard is a captain for United Air Lines B-777 at O'Hare in Chicago.

William M. Reid, Noblesville, IN - Bill retired from Reid-Holcomb Co., Inc. in 1989 prior to starting PHASE I Environmental Engineering in 1991. PHASE I is responsible for environmental site assessments, testing, hazardous and special waste removal in Indiana.

1962

P. Douglas Dollenberg, Lutherville, MD - Doug is president and CEO of Nottingham Properties, Inc., where he oversees its activities as a real estate developer/investor in metropolitan Baltimore. He is a registered professional engineer and participates in numerous civic and professional organizations. Doug is frequently a guest speaker at colleges and universities as well as other professional and community groups and has been recognized with several awards. In 1994 he was honored with a centennial medal as an Engineering Alumnus of Distinction at the 100th anniversary celebration of the University of Maryland's College of Engineering. Doug and his wife Kathie have two children.

Dorothy F. Dunn, Ph.D, Home Economics - Dorothy is retired as regional director for consumer affairs from the U.S. Food and Drug Administration in Chicago. She resides in Urbana, Illinois.

1963

Thornton D. Schwenk - BSCE '63, MSCE '65 - Albuquerque, NM - Senior project engineer, Defense Technology Group for Science Application International Corporation (SAIC). He was hired by SAIC to serve as a counterterrorism consultant to the energetic materials research & testing center at New Mexico Tech, Socorro, to investigate structural response and to develop mitigation techniques against explosive attacks by terrorists on military and federal buildings. He and his wife, Ruth, have six children. He was past president and is currently a director of the Albuquerque post of the Society of American Military Engineers. (corrected)

1964

Garry W. Metcalf, Overland Park, KS - Garry retired in July 1997, after 27 1/2 years as city traffic engineer for the city of Overland Park. He is married to Jane - BSHE '65. Their son Matt is also a Purdue BSCE '94 graduate.

1969

Robert Farris, Virginia Beach, VA - Bob recently received his license as a professional engineer in the state of Virginia.

James E. Schoenberger, Falls Church, VA - James retired in December 1997, fulfilling a long time plan to leave the employment world at the age of fifty to pursue various non-profit and charitable ventures. His principal work history was at the Department of Housing and Urban Development on three tours of duty during 1974 - 1997, where he held several senior positions, including principal deputy at FHA. James received his MS in Business Administration from Harvard Graduate School in 1969. He is married to the former Victoria Montana and they have two sons, David and Eric.

1970

John H. Allen, Des Moines, IA - John was awarded the 1997 Arthur M. Wellington prize by ASCE.

1971

James I. Mitnick, Pittsburgh, PA. - sr. vice president for Turner Construction Company. Jim manages construction company of-fices in Detroit; Cleveland; Pittsburgh; Philadelphia; Sommerset, NJ; Buffalo, NY; and Toronto, Canada.

1972

Michael C. Hallien, Fort Wayne, IN - Michael is a district bridge engineer for the Indiana Department of Transportation, where he just completed 25 years of service. He is married to Gail (Tienken) Hallien, BSHE '74. They have two sons, Adam, age 17, and Matthew, age 15.

Takahiko Nichio, Kyoto, Japan - Takahiko was the first president of the Purdue Club of Japan.

1974

Moriyasu Furuki, - Tokyo, Japan - Moriyasu has been appointed the executive director of the Metropolitan Expressway Public Corporation in Tokyo.

Richard T. O'Connor, Carmel, IN - Dick is a principal owner of RQAW Corporation in Indianapolis.

Eugene R. Russell (Gene), Manhattan, KS - Gene is a professor at the Director Center for Transportation Research & Training at Kansas State University, Department of Civil Engineering. He is the recipient of the first endowed chair in civil engineering at Kansas State, the Margaret S. and Mark S. Huling's Chair. He also received the best paper award, low volume roads division, at the X111th International Road Federation Conference in Toronto in 1997. He and wife Mary celebrated their 40th wedding anniversary in June 1997. They now have 23 grandchildren, including five that were born in 1997.

1976

Richard J. Schipp, Paducah, KY - Richard is resident engineer for the U.S. Army Corps of Engineers. He received the employee of the year award in 1996.

1977

Glenn Reynolds, Glenville, WV - Glenn is director of the physical plant at Glenville State College. He retired from the U.S. Navy Civil Engineer Corps after a 23 year career. His wife Sandra also works at Glenville State College.

1978

Dave Koester, Schererville, IN - Dave joined BMW Constructors in Munster, Indiana, in 1995, where he is a project manager involved with industrial construction projects. Dave spent several years serving the United Way in agency review processes. Dave has also seen many future Boilermakers in his 19 years as an Indiana high school football official.

1979

David R. Gally, Bristow, VA - David is a research fellow for Logistics Management Institute in McLean, Virginia.

1980

Peter Katz, Australia - Peter is a regional manager for Kinhill/Brown & Root in Sydney.

Ann D. Luther, Indianapolis, IN - Ann is project manager for Powers & Son's Construction Company.

Mark N. Oberfell, Indianapolis, IN - Mark is senior project manager and site department manager for Ter Hoist, Lamson & Fisk, in Indianapolis.

1982

Clyde L. Pritchard, Sturgis, MS - Clyde founded Pritchard Engineering, Inc. in 1997, where he is president.

Mary Ann F. Saggese, Indianapolis, IN - Mary Ann has joined the Indianapolis based law firm of Plews, Shadley, Racher, & Braun. She previously worked with the IBM Corporation in Virginia, working in environmental engineering. In 1989, Mary Ann received her Juris Doctorate from the George Washington University National Law Center and worked with private government contracts and construction law with Braude and Margulies in Washington, D.C. Moving to Indianapolis in 1990, Saggese worked with Cromer and Eaglesfield, specializing in environmental permitting, regulation and enforcement matters; administrative adjudication and representation; and litigation. At Plews, Shadley, Racher, & Braun, she is concentrating her expertise in the same areas. Saggese has also served as author and speaker of several publication and seminars since 1991. She is a member of the American Bar Association, Indiana, and Virginia Bar Associations. She is also a member of the Kappa Alpha Theta Indianapolis Alumni Association. Including among her academic honors are: Alpha Lambda Delta, Tau Beta Pi, Chi Epsilon, Hoosier Scholar, Burtmaster Scholarship, and Indiana State Scholarship.

Dale Wills, South Bend, IN - Dale is project manager for Reinke Construction Corporation in South Bend.

1983

Jarkko K. Leinonen, Oulu, Finland - Jarkko is a project manager of SK Consulting, Ltd., in Oulu, Finland.

1984

Jim Pollart, Mountain View, CA - After working for ten years as a consulting civil engineer in Massachusetts and northern California, Jim returned to school full-time and received his MBA from the Wharton School of Business at the University of Pennsylvania in May, 1996. Since that time, he has been with K&B, where he is responsible for land acquisition and land development in Santa Clara County in the Southern San Francisco Bay area. He and his wife, Theresa, celebrated the birth of their first child, daughter Olivia born December 1996.

1985

David A. Boss, Dallas TX - David is a project engineer for Turner Collie and Braden, Inc. in Dallas. He and wife, Charlene have a son, Matthew, who is two years old.

Ron Klemencic, Seattle, WA - Ron is president of Skilling Ward Magnusson Barkshipe, Inc. in Seattle, WA.

T. John Wysocky, Gary, IN - John is employed with Thatcher Engineering Corporation in Gary.

1987

Amy Shearer, Owings Mills, MD - Amy is a project manager for Barton Malow Company in Baltimore. She is managing construction of K-12 schools and renovating an old rail station at Camden Yards baseball field (home of the Baltimore Orioles).

1988

Michael B. Cline, Indianapolis, IN - Michael is an administrator of traffic operations for the city of Indianapolis, Department of Public Works. He received his PE in Indiana in 1994 and is currently vice president of the Indiana section of ITE. He married Kimberly A. Cline, BS 1985, DVM 1989. Daughter Josey was born in September 1996.

Matthew Travis, OR - Matt is a captain in the United States Marine Corps.

1990

John Beery, Van Wert, OH - John is city engineer for the city of Van Wert.

David S. Clarke, McKinney, TX - David is a gas process engineer for Mobil Technology Company in Dallas. After graduating with a MS in environmental engineering from the University of Texas at Austin, David worked for two years as an environmental engineer and then two years as a process engineer for Mobil E & P US in Mobile, Alabama, before relocating to Dallas.

1991

Keisuke Matsukawa, Yokohama, Japan - Keisuke received his PE (Oregon) in July 1997. He is employed at Chiyoda Corporation in Japan.

1992

Manuel Puyana, Colombia, South America - Manuel is planning director for Aspinas & Company of Bogota, Colombia. He and his

wife Karen have a daughter, Laura Isabel, born on December 15, 1997.

Kipp Schulties, Singer Island, FL - Kipp is president of Golf Course Design, in Palm Beach Gardens, Florida. He resigned as a designer for PGA tour professional Fred Couples and Gene Bates to start his own company in February 1997. He will continue working as a designer for Couples/Bates Golf Design on a limited basis. Kipp works out of an eastern office in Palm Beach Gardens and a western office in San Jose, California. The majority of his work is in California and the mid-Atlantic states. In addition, he graduated with an MBA in finance from the University of Miami (FL) in December 1997.

1993

Dawn Blankenship, Elkhart, IN - Dawn is a project engineer for Glaval Corporation in Elkhart.

1994

Paul D. Coats, Joliet, IL - Paul joined the code development staff for Building Officials and Code Administrators International (BOCA) in 1996, after two years as a project engineer for Alt & Witzig Engineering in Indianapolis/South Bend.

Michael Olvera, Walnut Creek, CA - Michael is an environmental engineer for American Brass and Iron in Oakland, California.

1995

Deanna R. Alvarez, Orlando, FL - Deanna is a structural engineer for Sverdrup Facilities, Inc. in Orlando.

Rebecca L. Hansell (Sulgrove), Glen Allen, VA - Becky is an assistant engineer/assistant superintendent for general contractors at Turner Construction. She married Mark Hansell on October 19, 1996.

Haiming Huang, Wichita, KS - Haiming is a technical vice president for Abatech, Inc. in Wichita.

Dale Kruse, Crawfordsville, IN - Dale is a land surveyor and civil engineer for Butterworth Associates in Avon, IN. He is in the process of buying the company from Dave Butterworth, who is retiring in 3-5 years. Dale is working on subdivision design and construction layout and also doing a site design for a 300-unit apartment complex. Dale recently married Kristee Davis, a '96 Purdue psychology grad on June 6, 1998.

Taesoon Park, Seoul, Korea - Taesoon is an assistant professor in civil engineering for Seoul National Polytech University. He previ-

ously worked for the Korea National Housing Corporation.

Jodi L. Schaefer, Waialua, HI - Jodi is a 1st Lieutenant in the U. S. Army as a flight platoon leader, stationed in Hawaii. She recently took over as flight platoon leader of Chinook Helicopter Company. She is responsible for care and maintenance of 8 CH-470 helicopters valued at over \$64 million. In addition she flies firebucket missions and other support operations to armed forces stationed in Hawaii.

1996

Keith Gardina, Schererville, IN - Keith is a civil/structural coordinator for Kvaerner Metals in Merrillville, Indiana. He does structural engineering, design, and project management for capital maintenance projects at northwest Indiana's steel mills and chemical companies.

Joel Holloway, Warsaw, IN - Joel is a structural engineer for PES Associates in Warsaw. He is currently designing glulam beams for a restoration project at the University of Notre Dame. He also designs steel structures for clients in the US and Mexico. He and his wife, Erin, (Purdue BA '95) have one child, Trevor Jay, who is two years old.

1997

Suzanne Lagerman, Chicago, IL - Suzanne is a civil engineer for Greeley and Hansen in Chicago.

Julie Marie (Wilson) Jackson, Santee, CA - Julie is a project engineer for DPR Construction, Inc. in San Diego. She recently completed her first project, which was a \$12 million pharmaceuticals lab and office facility. She is currently working on a \$40 million outpatient hospital. Julie is a member of DPR construction's safety leadership team. She married Philip C. Jackson in May 1997. He is a 1994 CE graduate.

Kelly L. Paper, Tampa, FL - Kelly is a project engineer for Winter Construction Company. In December 1997 she moved from the estimating division to operations, where she is currently working on three hotels in the South Carolina area.

Matthew G. Russell, Longmont, CO - Matthew is a design engineer for Rocky Mountain Consultants. He married Natalie M. Tenota, a '96 Purdue Education major.

Jemie Yao, Cincinnati, OH - Jemie is a project manager/engineer for Procter & Gamble in Cincinnati.



School of Civil Engineering

Head
Vincent P. Drnevich

Assistant Head
V. James Meyers

Area Heads:
Construction Engineering
Daniel W. Halpin

Environmental & Hydraulic Engineering
Chad T. Jafvert

Geotechnical Engineering
Adolph Altschaeffl

Materials Engineering (Civil)
Thomas White

Structural Engineering
Mark Bowman

Geomatics Engineering
Edward M. Mikhail

Transportation and Infrastructure Systems Engineering
Kumares C. Sinha



In Memory

1920's

Albert L. Hartman - BSCE '27, Hot Springs, AR ❖ J. Calvin Hill - BSCE '29, Groveland, FL
Thomas R. Jacobi - BSCE '29, Thousand Oaks, CA ❖ George L. Lohman - BSCE '29, Lafayette, IN
Ernest H. Miller - BSCE '29, Cheyenne, WY ❖ James R. Shelburne - BSCE '27, Springfield, IL
Dallas M. Costello - BSCE '23, Peoria, IL ❖ Adolph J. Hartman - BSCE '27, Kennett Square, PA

1930's

James H. Bookedis - BSCE '33, Indianapolis, IN ❖ Richard E. Harris - BSCE '32, Phoenix, AZ
Virgil O. Hart - BSCE '30, Peoria, IL ❖ Harry T. Helton - BSCE '39, Roswell, GA
Thomas W. Henderson - BSCE '36, Mililani, HI ❖ Hylmar J. Keil - BSCE '30, La Porte, IN
Robert R. Panzer, Jr. - BSCE '32, Irvine, CA ❖ Dempster H. Brownell - BSCE '32, Selah, WA
Ross W. Buck - BSCE '37, Avondale Estates, GA ❖ John M. Hayes - BSCE '31, PCE '46

1940's

Robert W. Brannan - BSCE '47, Lake Mills, WI ❖ William L. Dolch - BS '47, MS '49, PhD '56, West Lafayette, IN
Frederick W. Foley - BSCE '48, Provo, UT ❖ Arthur L. Haag - BSCE '49, Ocala, FL
William H. Largent - BSCE '42, Torrance, CA ❖ Marvin L. Mass - BSCE '41, Culver City, CA
James E. Roembke - BSCE '41, Gaithersburg, MD ❖ Robert A. Simpson - BSCE '49, Warsaw, IN
Carl A. Votik - BSCE '44, Sun City, AZ ❖ Stephen R. Stearns - MSCE '49, Hanover, NH
John J. Stelter - BSCE '48, Bolingbrook, IL ❖ Charles T. Kirkpatrick - BSCE '41, Albuquerque, NM
William L. Kiep - BSCE '49, Pompano Beach, FL

1950's

Everett A. Dye - BSCE '52, MSCE '58, Lewisville, TX ❖ C. Douglas Frost - BSCE '54, Bailey, CO
Richard M. Hutchins - BSCE '50, Reno, NV ❖ Joseph C. McCalley - MSCE '54, Dallas, TX
Floyd B. Morris - BSCE '50, Worthington, IN ❖ Edgar B. Olson - BSCE '51, West Lafayette, IN
Stanford B. Smith - BSCE '50, Holland, MI ❖ Suzanne Whitford - BS '53, Juneau, AK
Robert J. Wilson - BSCE '50, Indianapolis, IN ❖ Per H. Ulstad - MSCE '59, Oslo, Norway

1960's

Frederick P. Blissmer - BSCE '63, Michigan City, IN ❖ James R. Jensen - MS '67, Morgan, UT
Wallace T. Miller - BSCE '60, Lagrange, IN ❖ Dorothy J. Christoff - BSCE '65, Lafayette, IN

1980's

Roger K. Schmidt - MSCE '84, Greenfield, IN

Purdue and Civil Engineering Loses Loyal and Generous Friends

Marietta Kettelhut died March 5, 1998, in West Lafayette. She was the wife of Karl H. Kettelhut (BSCE '26, PCE '30, HDR '91), who was president of Kettelhut Construction Company. Karl passed away in 199) The Kettelhuts and their family were generous to the School of Civil Engineering over many years. Kettelhut Construction built many of the Purdue University buildings during Karl's leadership. Mrs. Kettelhut is survived by daughter, Mary Ann Combs, and son, Karl T. Kettelhut.

Edgar B. Olson, died June 9, 1998 in West Lafayette. Ed received his BS in Civil Engineering in 1951. He was a charter member of the Civil Engineering Advisory Council and was chairperson of the University's President's Council. Ed and his wife Hedy have been great supporters of the School of Civil Engineering. Ed worked many years for Kettelhut Construction Company and succeeded Karl Kettelhut as president. Ed received the Civil Engineering Alumni Achievement Award from the faculty in February 1997. He is survived by his wife, Hedwig, son Richard H. Olson (BSCE '76, MSCE '77), and daughter, Kris Olson Potter.

Wally Miller, died July 24, 1998, in LaGrange, Indiana. Wally was chief operating officer of MMM-Invest, Inc. He graduated in 1960 from Civil Engineering and was serving as the vice chair of the Civil Engineering Advisory Council. Wally had the drive to make Purdue Engineering # 1 in the country. He was one of those people who would do whatever was necessary or whatever was asked of him to improve the stature of the Purdue programs and students. He is survived by his wife, June, and children Beth Ingram, Aimee Riemke, Tom and Michael Miller; stepsons Ben and Andy Camp; mother Connie Conklin Miller; sisters Beverly Steven, Barbara

Students & Alumni Awarded...

The Ballotti, Greeley & Hansen Fellowship

Brandon Ogilvie, the Elmer F. Ballotti, Greeley and Hansen Fellowship recipient is congratulated by T.J. Short, of Greeley & Hansen



The Fluor Daniel Scholarship

Kimberly Cole receives the Fluor Daniel Scholarship from Dan Stoppenhagen, BSCE '85, of Fluor Daniel. Also pictured Richard Schwartz, Dean of the Schools of Engineering and Alan Boeckman, Fluor Daniel Vice President.



The Asphalt Paving Association Scholarship

The Asphalt Paving Association Scholarship was awarded to three Purdue students. (counter-clockwise from the top) Roger Radabaugh, Purdue University, here with Governor O'Bannon, and John and Andy Brooks of Brooks Construction. Aaron Fisher, Purdue University with Governor O'Bannon, Pat Cahill, Wabash Valley Asphalt and Ralph Simpson, Milestone Contractors, and Jeremy Gries, Purdue University with Governor O'Bannon, Pat Cahill, Wabash Valley Asphalt and Ralph Simpson, Milestone Contractors.



The Maple Point Foundation Award

Jungfeng Leng (center), with Judith Hamman and Professor Dulcy Abraham presenting the Maple Point Foundation Award

CE Design Lab Named

— by Lois Rans

Dedication services were held on June 9, 1998, for the Edgar B. and Hedwig M. Olson Laboratory in the School of Civil Engineering. Dr. Kumares Sinha, the Edgar B. and Hedwig M. Olson Distinguished Professor paid tribute to the impact Mr. and Mrs. Ed Olson have had on Purdue's School of Civil Engineering and the focus of civil engineering worldwide.

The laboratory was created in 1994 as a result of the Kresge Science Initiative Challenge. The Olson family generously helped provide matching funds to support the Kresge grant, along with the Olson Distinguished Professorship Award and the Olson Graduate Fellows Award.

The Olson Laboratory has provided many "Purdue" unique experiences for civil engineering students enrolled in CE 498, the capstone design course for students in their last semester before graduation. Projects such as the Lafayette Railroad Relocation, Happy Hollow Park, the Animal Science Center, Wastewater Complex for West Lafayette, and the Food Science Building at Purdue owe their beginnings to this "signature course" in the Civil Engineering program. Over 1,000 students have benefitted from this state-of-the-art facility used in this course that is second-to-none in the world.

Faculty News

(continued from page 5)

for their project, "Ramp Bridge Over the Indiana I-80-/90 Toll Road at Milepost 96." **Professors Mark Bowman and Julio Ramirez** were also recognized for their participation on this project.

Professors Midhat Hondzo and Srinivas Peeta are among four Purdue scientists and engineers working on projects funded in 1997 by a federal program designed to encourage educators and researchers in their areas of interest. Professor Hondzo's research is related to environmental fluid dynamics and water quality modeling. Professor Peeta's research uses real-time traffic-related data gathered from advanced sensor and information systems to control the performance of large-scale traffic systems. The 1997 Faculty Early Career Development Program administered by the National Science Foundation to junior-level university faculty, is designed to emphasize the importance of integrating research and educational activities in academic careers.

Professor Hondzo received the 1997 Founders Award from the USA National Committee of the International Association on Water Quality for the best paper in 1996 in the *Journal of Water Research*. The topic of the paper was "Long-Term Lake Water Quality Predictors."

A new book entitled *Surveying: Theory and Practice* by Professor J. M. Anderson of the University of California at Berkeley and Purdue **Professor Ed Mikhail** has been published by McGraw-Hill. A comprehensive book with 1167 pages, it is a widely used textbook for undergraduate and graduate courses in the field as well as a valuable reference for practicing professionals.

Professor Mikhail has been recognized for his research support to the U.S. Office of Research and Development. The award citation states: "In recognition of his invaluable contributions to the MSP (Model Supported Positioning) project. MSP could not have succeeded without him providing superb technical expertise."

Professor Julio Ramirez has been elected to the category of fellow of the American Concrete Institute. He was recognized at the awards banquet during the Spring Convention of the American Concrete Institute in Houston.

A paper presented by **Professor Jon D. Fricker** on applications of transportation planning methods in Dearborn, Michigan, was selected as one of the five best papers. The paper, "An Integrated Transportation-Land Use Model for Indiana," was co-authored by Andrew Ying-Ming Yen.

Professor Dan Budny was inducted into the new Purdue University Teaching Academy. The Teaching Academy recognizes Purdue faculty from all areas for their excellence in teaching. Professor Budny also received the Ronald J. Schmitz Award. This academic award is given annually to an individual who has given outstanding continued service to engineering education through contributions to the Frontiers in education conference. It is presented by the boards of the Engineering Research Methods Divisions of the American Society of Engineering Education and the Education Society of the International Engineering Electrical in memory of Ronald J. Schmitz.

Professor Ronald Wukasch was selected for the position of technical secretary of the Indiana Water Pollution Control Board. The technical secretary has the responsibility to review all materials prepared for the board by the Indiana Department of Environmental Management and make any necessary revisions. The term of the appointment is four years.

Dr. Vincent P. Drnevich was honored by the University of Michigan College of Engineering by receiving the 1998 Alumni Society Merit Award from the Department of Civil and Environmental Engineering.

Professor Doug Sutton has been elected by the professional membership to serve as chairman of the PCI Techni-

cal Activities Committee beginning in January 1999. He will also serve on the Board of Directors.

Professor Ernest Blatchley's research project on gamma radiation was featured in the August edition of ENR. The feature called "Disinfection Work: On the Beam" highlights the NSF - funded research project he is leading in search of new disinfection techniques.

Professor Emeritus C. W. "Bill" Lovell was honored for 50 years of continuous employment at Purdue University. Bill formally left the School of Civil Engineering in 1995 to become a leadership facilitator in the Organization and Career Development Department of Personnel Services. He is a licensed Franklin-Covey facilitator.



Professor Drnevich and Roxanne Drnevich

Civil Engineering Donors

Recognizing the individuals and corporations who made gifts to the School of Civil Engineering, July 1, 1997 - June 30, 1998.

Donors contributing \$250 or more to the School of Civil Engineering are recognized through membership in our giving club, The Civil Engineer's Club, as well as other Engineering and University recognition clubs:

President's Council	Annual gifts totaling \$1,000 (anywhere within Purdue University, including those designated to Civil Engineering)
Dean's Club Lifetime	Cumulative gifts of \$50,000 or more or a lump-sum gift of \$25,000 or more
Dean's Club Benefactor	Annual gifts totaling \$2,500 to \$24,999
Dean's Club Sponsor	Annual gifts totaling \$1,000 to \$2,499
Dean's Club	Annual gifts totaling \$500 to \$999
Engineer's Club	Annual gifts totaling \$250 or more

Every effort has been made to ensure that the information is accurate. Please let us know of any errors.

Thank you for your generous and loyal support

Dean's Club and Civil Engineer's Club Lifetime Members

Cumulative gifts of \$50,000 or more or one-time gifts of \$25,000 or more.

Stephen & Elizabeth Bechtel, Jr
Robert & Terry Bowen
Christopher & Susan Burke
William & Barbara Corning
Robert & Barbara Flannery
Dorothy Goldberg
Judith Hamman
Paul & Caryl Hamman
Robert & Jeanne Horth
William & Edna Ling
Elizabeth Lyles
Lewis & Jean McCammon
Esther McConaughay
Jerome & Shirley McTague
Wally & June Miller
Edgar & Hedwig Olson
Thomas & Evelyn Page
Charles & Doris Pankow, Jr.
Mary Jane Rieth
Charles & Margaret Waidelich
Roy & Myrna Wansik
Ching Tang Yeh

\$25,000 OR MORE

William & Barbara Corning
Dorothy Goldberg
William & Edna Ling
Thomas & Evelyn Page
Ching Yeh

\$2,500 - \$24,999

Thomas & Carole Bloodgood
David & Colleen Boyd
Christopher Burke
Clover Downs
Vincent & Roxanne Drnevich
Bryan & Susan Erler
Robert & Barbara Flannery
Delon & Sonia Hampton
James Lammie
James & Betty Maple
Charles & Cynthia Mergentime
Robert Miles
Carl & Phyllis Neumayer
Dennis & Phyllis Roby
Daniel & Sandra Rullman
Robert & Linda Shanks
Elias Sotiropoulos
Daniel & Amy Tam
Wallace Vawter
Charles & Margaret Waidelich

\$1,000 - \$2,499

William & Virginia Beatty
Walter & Barbara Bell
Webb Bernhardt & Cynthia Fort
Joseph Broyles
R. Vernon Casteel
Christine Haberstroh Crockett
Robert Crowe
Edward Curtis
Jacques & Delores Delleur
David Derrick
Sidney & Harriet Diamond
J. Edward & Carolyn Doyle
Dennis & Leslie Drag
William & Bernice Fehribach
Fred & Mildred Fehsenfeld
Jimmy Fletcher
& Karen Christopher
Harold Force
Curry & Lillian Ford
David & Dorothy Gedney
William & Theresa Gervasio
Norman & Martha Halus
John & Christine Hamilton
Peter & Josephine Ho
Charles & Elizabeth Hoppe
Eleanor Kelly
Dan Keys
Hubert & Audrey Kleasen
John Knapp
Richard & Leona Kraus
Frank & Carolyn Lee

John Lowney
Walter & Jeanne Lum
John & Edna Lyons
Andrew & Sarabeth Marcinko
James & Sandra McLary
Edward & LaVerne Mikhail
J. David Miller
Za-Lee & Jeannette Moh
Jack Munsee
Christopher Noon
Michael & Sally Pierle
Frederick & Ruth Pohland
Byron & Marsha Robinson
Keith & Imogene Rupel
Roop Shivpuri
Laddie & Thelma Stahl
Wayne & Lynda Stahl
Cecil & Marian Van Til
Richard & Marjorie Walker
Dirk Willms
Russell Zingelman

\$500 - \$999

Adolph & Martha Altschaeffl
Alfred & Florence Aragaki
Nicholas Aschliman
Ralph Bazo-Villoria
Willis & Penny Conner
Alan Dausman
William & Suzanne Davis
Roger & Diane Dierckman
Thomas & Sherry Doran
John Duchardt
Tomas Duque V.

David & Patricia Everhart
Moriyasu & Hiroko Furuki
Arthur & Kathryn George
Kenneth Giovannetti
William & Mary Goetz
T. Lewis & J. Sue Graham
Albert Haeger
Richard Hall
Douglas Hattery
James Horton
David Johnson
Jay & Jackie Kent
Richard & Alma Knight
John & Wanda Koch
Thomas Lewandowski
Lewis & Pamela Locke
C. William & Mary Lovell
James Lusk
John & Esther Matthews
Lewis McCammon
Faramarz Moavenzadeh
Darrel & Clarice Moore
Matthew & Christine Meyer Moore
Randy & Jo-Lynn Mull
Steven Ollo
Ronald & Charlene Placey
Philip Probst
Leonard Pursell
Joyce Rayburn
Martha Rees
Ross Reineke
David & Carol Rhinard
James & Janet Rupel
Donald Schwegel
Donald Shalibo
Maurice & Sharon Sharp

Barry & Kathy Smith
 Charles & Beth Stahr
 Stephen Starek
 Edward & Virginia Thoma
 Roderic & Rita Thomas
 Corby Thompson
 & Julie Viellieu-Thompson
 Patricia Moss Tobergte
 Mark & Beth Townsend
 Glen Traylor
 Clinton & Betty Venable
 Alan & Ellyn Wagner
 Kenneth & Beverly Wehr
 Arthur Weiss
 Warner & Lynaire White
 Robert Whitford
 Douglas & Janet Winslow
 Mary Yoder
 Norman & Peggy Yoder
 Mary Ann Zimmerman

\$250 - \$499

Theresa Smith Adams
 David & Diane Ailor
 Richard & Joan Allen
 William & Denise Ambry

Jeffrey & Gloria Copeland
 William Daily
 J. William Davidsmeyer
 William & Hilda Denny
 James & Kathleen Dickerson
 Jay Dietrich
 Laurence & Rose Dondanville
 George Fassnacht
 Jack & Elizabeth Findley
 Joseph & Martha Fletcher
 Don & Frances Franklin
 Charles Free
 Jon Fricker & Karen Springer
 Donald & Rebecca Fry
 Stanley Furukawa
 Charles Gaither
 Lionel & Donna Galerman
 Lawrence Garatoni
 Bernard Gogel
 Edward & Gladysmae Good
 Jon Gotz
 Gregory Gurnik
 Donn & Barbara Hancher
 Howard Hanes
 David Hardin
 Donald Harley
 David Hay
 John Heckler

Delbert & Mary Leistner
 William & Prudence Leslie
 Albert Lewis
 Leo & Elizabeth Louis
 Roland Marsh
 James McCalment
 Mitchell McCoy
 Darrow McCreary
 Jay McGarraugh
 Cary McGuire
 Richard & Monika Michaels
 D. Mark & Ingebjorg Miller
 James & Margaret Mills
 Samuel Moore
 James Morford
 Brian Morrison
 Ralph Muehlenbein
 Kazuo Nakamura
 Robert Orr
 Thomas Pickford
 C. William Powell
 Kenneth & Christine Price
 Sherwood Richardson
 Donald Robison
 Eugene Russell
 James Ryan
 Darrell Samuels
 Michael Schaeffer

Daniel Van Buskirk
 Louis Vosteen
 David & Christine Wallace
 Joseph Wambold
 Stephen & Lori Wanders
 Kenneth & Martha Warrick
 Ronald Watt
 Keith Weisenberger
 Alan Welch
 Robert Whitesell
 Max & Sharon Whitlock
 Leonard & Margaret Wood
 James Wooten
 Edgar & Kathleen Wotring
 Darrell Wright
 Ronald & Ruth Wukasch
 James & Anna Yao
 Bryan Youker

Up to \$249

Dennis Abel
 Michael Adams
 Aavo Agur
 Daniel Allard
 Jan & Elisabeth Allen
 Michael Allenspach

Christian Badger
 James Baker
 Richard & Mary Ball
 Debra Ballentine
 Jeffrey Bane
 Paul & Brenda Conley Barber
 Richard Barksdale
 David Barna
 John Barr
 I. Gene Barrett
 Richard Barrow
 Adrian Bastianelli
 Gerald Batchelder
 Chenchayya & Sarojini Bathala
 Thomas Batke
 Paul & Joan Baumgartner
 Deborah Bakken Baxter
 Katherine Beaman
 Darrin Beckett
 Dean & Diane Behnke
 Neil & Diane Behrle
 Gordon Bell
 John & Bonnie Bellingher
 David & Cynthia Belloli
 Joseph & Danielle Bement
 Steven Bennett
 William & Paula Berg
 Peter & Tere Bergman
 Wayne & Debora Bergstrom
 Thomas & Peggy Berry
 Harry & Jean Bettis
 Timothy Beyer
 Debashish Bhattacharya
 Edward & Nancy Bialas
 Joseph Biedenbach
 Donald Biggs
 Robert Billman
 David Bjork
 Theodore Blum
 Timothy Bock
 Gregory Bocwinski
 Scott Boerke
 Nihal Bohra
 Van Bonnewitz
 Paul Bonus
 Thomas Borck
 David & Charlene Boss
 Joseph & Martha Boward
 Robert Bowen
 Chester & Anna Bowers
 Mark & Barbara Bowman
 J. C. Boyers
 James & Alice Boyle
 James Boyles
 Clarence & Evora Boyll
 Robert Bradford
 Paul Bradley
 Scott Bradley
 Dennis Brand
 Donovan & Jane Brand
 John & Carmel Brand
 Kenn & Karen Brandt
 Charles Breland
 John Brestin
 George & Jean Briggs
 Bradley Brink
 Brian Brouillette
 Christopher & Adrienne Brown
 Frederick Brown
 Orin Brown
 Randy Brown
 Robert & Karen Brown
 Joe Broz
 Gregory Brubaker
 David Brubeck
 Roy Bruce
 D. Eric & Norma Brunn
 Michael & Margaret Bruns
 Michael & Kelly Bruns
 Stuart Bryant & Toni Rossetti

CE Advisory Council members, Angela Jenkins-Kirby and Alex Oak are enjoying council activities.



CE Alums Craig Parks (BSCE'97) and Natilie (Dawe) Parks (BSCE'97) and Emily Ellis, ASCE Student Chapter President (right) attended Homecoming breakfast

Thomas Anderson
 Frederick Apsey
 Roger Arend
 LaVonne Banks Banks-Laney
 James Barker
 Martinus & Susan Bergman
 Donald & Donnamarie Biddle
 Donald & Jo Bloodgood
 Gary Bosar
 Edward & Ann Brink
 Robert & Marilyn Brown
 Roger Cain
 Jeffrey Clark
 John & Gloria Clark
 Ted Clark
 John & Margarita Contreni

William & Caroline Henders
 Daniel Hunter
 Margery Ismail
 Kenneth Jarosch
 Paul Johannsmeier
 James Johnstone
 Clifford Kajiwara
 Michael Karsas
 William Kennedy
 John Kett
 Shirley Koepke
 James & Melinda Kovach
 Steven Kraemer
 Merrill Kreipke
 Eugene Lamberson
 Nelson Ledbetter
 Mark Leeman

John Schira
 John Schneider
 Charles & Sue Scholer
 Joseph Seckinger
 Paul Sensmeier
 Brian & Anne Shields
 Mark Slaughter
 Gary & Patricia Buker Sorensen
 John Stamm
 Gus Stangas
 Tom Stangas
 Stephen Stanich
 Bradley & Lori Stewart
 D. Duffy & Brenda Stradtner
 John Strange
 Gerald Tinkle
 Egons & Susanne Tons

Charles & Marcia Alles
 Roger Allmandinger
 David Alspaugh
 Marc & Gretchen Alston
 Corrado Amato
 Larry Ammon
 Jon & Beverly Anderson
 Ted Andrews
 Steven & Leisa Anslinger
 Gordon Archibald
 Veljo Areng
 Shahin Ariaey-Nejad
 Mark Atwood
 Anthony Augello
 Robert Aunan
 Gary & Marsha Bach

Steven Buck
 Raymond Buckel
 Richard Bucknam
 Kurt & Sonia Buehler
 Thomas & Gail Buick
 Thomas Bulcher
 Ralph Bultemeier
 Mark Burbrink
 David Burchard
 Daryl & Karen McHenry Burgess
 Martin Burke
 Thomas & Penelope Pezdirtz Burke
 Lee Burneson
 Murray Burnette
 Phillip Burruss
 Richard & Lois Butler
 Clarence & Linda Byers
 John Calacci
 Christopher Camp
 Donald Campbell
 Steven & Ana Caperton
 Raymond & Rose Carini
 Brian & Jennifer Snyder Carlson
 Jeffrey & Kathy Carlton
 John Carpenter
 Michael Carr
 William & Patricia Carr
 Joseph Carroll
 Robert Carter
 Eric Casanave
 Stefanie Bourgoin Cassin
 Brian Caufield
 James Cavin
 Joseph Cervone
 Ming-Fang Chang
 Bruce Chapin
 Clinton Char
 Chien-hao Chen
 Shieh-Sheing
 & Shwu-mei Hong Chen
 Kelly Childress
 William Chrissinger
 Matthew Christman
 Angela Christo
 Barry Christopher
 George & Bonnie
 Felter Christopher
 Thomas & Joan Christopher
 Christopher Ciocci
 Joseph Clark
 John & Judith Cleland
 Gary & Sharon Clossin
 Brian Coats
 Lee & Jeaneen Cobourn
 David Cochran
 Scott Coffman
 Alice Cohen
 David Coker
 Charles Cole
 Fotios Collaros
 David & Janet Collette
 Theodore Collier
 Edward & Cheryl Colman
 Mary Ann Combs
 Kenneth & Audrey Compere
 Kimberly Stammer Conn
 Richard & Katherine Connor
 Frederick & Cathleen Cooney
 Thomas Cooper
 Edward Copeland
 Bruce Copp
 Frederic & Ruth Corey
 Charles & Helen Cox
 James Cramer
 John & Jeanne M. Crawford
 Robert & Mary Crawley
 Robert Crawley
 Bryan Crepeau
 Kenneth & Kathleen Crichton
 Richard Critchell

Joseph Crivello
 James Cuffia
 James Culbertson
 Stephen Custer
 Donald D'Adam
 Jerry Dake
 Thomas Dames
 David & Mary Damon
 William & Beryl Darling
 Jerry & Margaret Davee
 Cecil & Sharon Davis
 James Davis
 Ellis & Wilma Dayton
 Mark Decker & Jamie
 Roach-Decker
 Richard DeiTos
 Vernon Dekker
 Raymond Denges
 Robert Denhardt
 Andrew Dennis
 Ben Deremiah
 Brian Des Rochers
 Richard Deschamps
 Eric Destival
 Michael & Margaret DeBoy
 Daniel DeRolf
 Raymond DeVault
 John DeWalt & Carey
 Burvis Burvis-DeWalt
 Daniel & Erica Downs DeYoung
 Rebecca Dickinson
 Stephen & Ruth Crane Diebold
 David Diehl
 James Dinsmore
 Stephen & Mary Dittinger
 Jerry Divine
 Jeffrey Dizon
 Curtis Dommer
 William Dooling
 William & Kathy Kays Dorsch
 Mark Douglas
 Mark Downey
 J. Ross Drapalik
 Bruno Dravininkas
 Robert & Joan Dreyling
 James & Rhonda Drummond
 Thomas & Joan Dubnicka
 Kevin Ducharme
 David & Belinda Dunavant
 John Duncan
 Fred Dunn
 Kenneth Dunn
 Jack Durfee
 Ali & Aydin Durgunoglu
 George Dutro
 James & Kimberly
 VandenBoom Earl
 Samuel Edging
 Theodore Eilts
 Harold Elkin
 Edward & Melita Elliott
 Glenn Ellis
 John Ellis
 Brian & Paula Elmore
 Charles Elson
 William Eng
 Charles Engelhardt
 Harold Engelhardt
 Jerry Engelhardt
 James & Patricia Engimann
 Robert Enneking
 William & Bridget Epp
 Robert & Miriam Epple
 Charles Ernstes
 Steven Esarey
 Scott Ethier
 Scott Etzel
 Lillian Eugster
 Jeffrey Evans
 Scot & Lisa Evans

Gregory Eveslage
 Lance Eybers
 Lawrence Fabbroni
 Jeffrey Fagerman
 Richard Falkenrath
 Shane Farr
 Walton & Barbara Farr
 Ouattara Fatogoma
 Bruce & Judith Faulkner
 Steven & Lauri Fehribach
 Jeffrey Fesler
 James Fiala
 Dennis Findorff
 Roger Fine
 Frederick Fisher
 Larry Fisher
 W. Richard Fisher
 Kevin & Catherine Fitzpatrick
 Erin Flanigan
 Hayden & Winifred Flaughner
 Larry & Andrea Fleck
 Peter Foley & Ellen Russell
 James Ford
 Troy Fornstrom
 Neil & Bobbie Fossnight
 Alan Foster
 John Fouser
 James Fox
 Dale Francis
 Randy Franks
 Rodney & Jill Freudenburg
 James Freund
 Brent & Elizabeth Friend
 Michael & Stephanie Fruth
 Altis Fry
 Alvin & Martha Fukunaga
 Jeffrey Fuller
 C. Wayne Fulwider
 Randal Furomoto
 Allen Furth
 Alden Gable
 David & Gale Gallagher
 James Gammon
 Francis & Cheryl Gantner
 William Gantz
 James Garrigus
 Jeffrey Garrison
 John & Marcia Gaunt
 Timothy & Betty Gaynor
 Stephen George
 William Gharst
 Savvas Giannakopoulos
 & Marilyn Swanson
 Dino & Susan Giannini
 Christopher Gilchrist
 Jennifer Gillen
 John Giolitto
 Frank & Mary Giunipero
 Charles Glasgow
 George Godfrey
 Joe Goff
 M. Ray Golly
 Ernest & Noreen Gomez
 Kunihiko Gondo
 Malinda Goodman
 John & Mary Goodson
 Jerry Goodwin
 Nathaniel Gore
 Dale Goss
 John Gradle
 Ned Grady
 Ronald & Sandra Grady
 Herbert Grant
 Kentton & Amy Grant
 Robert Grass
 Paul Green
 Terry Green
 Daniel & Faith Greenberg
 Michael Greenberg
 Gerald & Kathleen Greene

Mark & Jane Greenwood
 Ronald Greiwe
 Timothy Gretencord
 Alexander Grieve
 Paul Grindel
 Donald & Mildred Grossnickle
 Steven Grundhoefer
 Louis Grzesiek
 Firman Guenther
 Michael & Lori Guerin
 William & Georgette Guernsey
 Mark Guthrie
 Fred & Diana Haas
 Timothy & Andrea Haas
 John Habermann
 M. Golam & Sayeeda Habib
 Daniel & Mary Hacker
 Ralph & Carlotta Hagerty
 Kristopher Hahn
 Michelle Hain

Tara Roby Hardt
 Thomas Hargarten
 Michael Harkness
 Loren Harlow
 Howard Harman
 John & Patricia Harms
 Ronald Harper
 Horral Harrington
 Vincent Hartmann
 Douglas Harwood
 Donald & JoAnn Hassler
 James Haunty
 Garth Hawkins
 William Hawkins
 John Hawley
 Peter Hayes
 William Hays
 Gregory Head
 John & Margarete Healy
 Thomas Heginbotham

*Delon Hampton,
 ASCE President-Elect visits
 faculty and students
 at Purdue.*



Barney Hale
 D. Camille Baker Hall
 Jacob Hall
 James Hall
 Jeffrey & Veronica Gamboa Hall
 Ronald Hallquist
 Michael Haluska
 Franklin Hamamura
 Terry & Cora Hamilton
 Richard & Sara Hampton
 Jay Hancock
 Robert Hand
 Richard Hanes
 John Hannon
 Ronald & Rosemarie Hansell
 Donald & Jane Hanson

Kurt Heidenreich
 Albert Heierman
 Thomas Helbing
 Daryl & Gayle Helfert
 Caroline Henderson
 Edward Henderson
 Thomas Hennig
 Thomas Herits
 Paul & Sarah Herp
 Douglas & Beverly Hickey
 Beth Hickman
 William Highter
 Mannan Hill
 Tommie Hill
 David Hinchliff
 Brian Hippley

Ernest Hirata
 Kazuichi & Momoye Hirose
 Dan & Jamisen Cousins Hirota
 Jean Hittle
 Melvin Hockenbury
 Donald Hodson
 Robert Hoffman
 Larry Hofmockel
 Karl Holloway
 Darryl & Margaret Holst
 William Hoops
 Scott & Kandetta Hornsby
 Martin Horwich
 Jia-Song Hou
 James & Beatriz Houmard
 Phillip & Barbara Howard
 Michael Huber
 James & Rosemary Hubler
 Fred Hudson
 Gayle Huebner

David Jessup
 James Jessup
 Mark Johanningsmeier
 Ilo & Nanny Johanson
 Wyatt Johnson
 Anthony & Vicki Jones
 Jeffrey Jones
 Kenneth Jones
 Michael Jones
 Scott Jones
 Thomas Jones
 Wesley & Jennifer Ingall Jones
 David Jordan
 James & Jennifer Justus
 Jimmy & Lisa Justus
 Mark Kapouralos
 Dean Karcz
 William & Elizabeth Kasak
 Kenneth Kaszubowski
 & Ann Woodhull

Jerry Kerr
 Robert Kessner
 Howard Kiefer
 Edward & Therese Killin
 Rowland Kingham
 Raymond Kinnick
 Robert Kirby
 Wallace Kirk
 Robert & Lorraine Kirkey
 Craig Kirtley
 Wayne Kispert
 Ronald Klemencic
 Walter Klink
 Delmar & Janet Kloeker
 Peter Kneip
 Roger Knip
 Kenneth Knopp
 Paul & Margaret Koehler
 Stanley & Nancy Koehlinger
 Russell Koert

William & Linda Lamy
 Alfred Land
 Linda Laney
 James Lange
 Alberto Lao
 George Lapalm & Annette La Palm
 Paul Lapham
 Ronald & Elizabeth Lapinski
 Douglas & Arlene Larsen
 Morris Lauwereins
 Timothy LaBreche
 William & Melissa Leady
 Hermanus Lemmer
 James Lemp
 Lawrence & Donna Lenahan
 Nick Leo
 Fritz & Liselotte Leonhardt
 Thomas Lepak
 David Leshner
 Robert Lewandowski
 Richard Lewis
 James & Joyce Lichtenwalter
 Robert & Janet Liljestrang
 Ping & Sylvia Lin
 John Linhart
 Daniel Liotti
 John Lisack
 James Lisak
 David Little
 Charles & Ing-Ing Liu
 Francis & Jane Liu
 Michael Loehrlein
 Jeremy Loftus
 Daniel Long
 Mark Lorah
 Charles Lott
 Lloyd Lotz
 Kenneth Loushin
 Donald Lowe
 Mark Ludwiczak
 Eric Lui
 Ian Lundberg
 Chung & Cecelia Lung
 Britton Luther
 Edmond Lutsky
 James Lutz
 James Luzius
 Gerald & Nanette Lyles
 Robert Mach
 Daniel Mack
 Dennis Macklin
 Bruce MacCall
 Karen Berkman MacDonald
 Colin & Mary MacGillivray
 Matthew & Mariam MacGregor
 Kimberly Hartzler Mader
 Steven Magnusen
 Paul Makley
 John Mallon
 John Mansager
 James Mansdorfer
 Almo Manzardo
 Monte Marbach
 See Ping Mark
 C. Dale Marshall
 James Marshall
 Angela Sandifer Martin
 Robert & Karen Masbaum
 Victor & CarolAnn Maslanka
 Matthew Mason
 Dominic Massaro
 David Mast
 Keisuke Matsukawa
 Randall & Taryn Matsumoto
 Kris Mattila
 Vernon Matzen
 James & Kitty Maurer
 Brian May
 Charles May
 Thomas & Patricia McBride

Edward & Joanne McCallum
 William McCarron
 Michael & Jennifer
 Roberts McCool
 Keith McCormack
 Ronald McCormick
 Jonathan & Colette McCoy
 Paul McCracken
 Glenn McCullom
 Steven McCutcheon
 James & Elizabeth McDonald
 Richard & Jean McDonald
 John & Virginia McEntyre
 Michael & Barbara McGinity
 Jonathan McGormley
 William McGuirk
 A. W. McGurr
 Marilyn Ross McIlvaine
 Larry McKinney
 John & Eleanor McLaughlin
 Robert McLean
 D. Dewey & Cynthia McLemore
 Don McManus
 John & Mary Lineberry McMillen
 George McNally
 Harold McNally
 Alexander & Phyllis McNeil
 Joseph McNeil
 Jerome & Shirley Fauber McTague
 Ronald Mefford
 Donald & Marian Meinheit
 James Mekemson
 Mark Merklein
 John Merrill
 Lawrence Merritt
 James & Kimberle Meyer
 Raymond Meyers
 Gary & Janet Micheel
 David Middendorf
 Brandon Mieras
 Michael Milharic
 Robert Milhous
 Adam Miller
 David & Nancy Miller
 Gerald Miller
 Joan VanMunster Miller
 John Miller & Nicole Tetonis-Miller
 Keith Miller
 Lee Miller
 Matthew & Jean Miller
 Richard Miller & Patricia Nassano
 Roger & Martha Miller
 Harry Minter
 Hamid Mirfendereski
 Kevin Miskin
 Doreen Fajfer Mitchell
 John Mlaker
 Margaret Raffin Mochen
 Raymond Moore
 Woodrow Moore
 Harold Moores
 Jeffrey & Rosalie Flack Morgan
 Tracy & Laura Diombala Morland
 Carol Marcotte Morman
 Franz Morsches
 Sheryl Post Morton
 James Mosley
 Robert & Jean Moss
 Kendall Moulthrop
 David Mrozinski & Pamela Levora
 Stephanie Mueller
 Timothy Muench
 Thomas Mullinazzi
 John Mulligan
 John & Julia Mundell
 Brian Murata
 Michael & Annette Murphy
 Gary Murray
 Sudhir Murthy
 Gary Musto



Norm (BSCE '56) and Marty Halus check out the names on the CE 'Bountiful Tree'.



Professor Ron Wukasch, Bill Quebe, and Ed and Judy Doyle enjoy the October CE reception in Indianapolis.

Craig & Susan Petersen Huey
 Ronald Hull
 Joseph & E. Jenester Humel
 Hamilton Hunter
 James & Betty Hunter
 Max & Marian Hunter
 Lawrence Illingworth
 Clifford Ingles & Margaret
 O'Neill-Ingles
 Donald Inman & Julie Kuhns
 Wallace & Michelle Irmischer
 Carlton & Inez Jackson
 David & Deborah Jackson
 Ronald Jackson & Ann Luther
 Michael & Karen Jankowicz
 Troy & Alba Jessop

Allen & Miriam Katz
 James Kavalaris
 Mustafa Kavvas
 Neal Kawamoto
 James Keefer
 Walter & Donna Kegebein
 George Kelley
 Joseph Kely
 Thomas & Pamela Kempen
 Paul Kendall & Victoria
 Hague-Kendall
 Jeffrey Kennedy
 Gary & Linda Kent
 Brian Keogh
 Eugene & Patricia Kerckaert
 Larry & Diane Kerkhove

Thomas Konieczny
 Karen Brandwein Kontos
 Adam Koontz
 Agatha Kotsonis
 Paul Kraemer
 Jason & Sarah Kraus
 Donald Krauss
 Charles Krebs
 Arthur Kreisberg
 David Krewson
 David Kross
 Harry Ku
 Ernest Kuhlwein
 John Kurtz
 Russell Lain
 James & Donna Lambrechts

Anthony & Caroline Myer
 Byron Myers
 Norman Myers
 Robert Myers
 Jeffrey Myerson
 Jeffrey Myhra
 Michael & Margaret Mynhier
 Joseph & Nancy Nagy
 Mohammad Najafi
 Robert Nash
 Gary & Tracy Nassau
 Dennis & Mary Neidigh
 Michael & Amy Nelson
 William & Becky Nelson
 William Newcomb
 Jeffrey Nicholson
 Richard Nierzwicki
 E. Joseph & D. Mary Nies
 Patrick Noon
 Corey Norris
 Mark Nye
 Craig O'Connell
 Bernard O'Connor
 Richard O'Dell
 Dennis O'Neill
 Verde O'Neill
 Timothy O'Rourke
 Marvin Obermeyer
 Thomas Oesterling
 James Ogren
 George Okamoto
 David Olin
 Margaret Fargo Olsen
 Michael Olvera
 Richard Orellana
 Gale & Peggy Orem
 Steven & Beth Osborn
 Gary Owen
 Dan Owens
 David Owens
 Lawrence Padgett
 Thomas & Eileen Paez
 William Panarese
 Angel Papadinoff
 Michael Parent
 William Paris
 Jeffery Parke
 Robert & Tamara Parkison
 James Parks & Elaine Gregg
 Charles Parmerlee
 Joseph & Joan Patrick
 John & Margy Patterson
 David Peeler
 Jeffrey Penny
 Dennis Persic
 Dennis Pescitelli
 Claude & Joyce Ohlson Peterson
 Stephen Petty
 Gregory Peugh
 Luke Peyovich
 Henry Peyrebrune
 Courtney Phillips
 Darrell Phillips
 Elizabeth Phillips Phillips-Jones
 Michael Phipps
 Christopher & Debra Pieri
 Darren Pittman
 John & Laurie Placey
 Jeffrey & Lynne Plawewcki
 James & Nancy Pollack
 William Pongracz
 Randall Post
 Harold Poulin
 Andrew & Myrsine Poulos
 Stephen & Carole Pousardien
 Earl Prechtel
 Robert Price
 Susan Pritchard
 David & Patricia Probst
 Gregory & Jacqueline Jaques Pugh

Timothy & Lori Puls
 Barbara Puterbaugh
 Daniel Putz
 Brian & Carol Harber Quinn
 Stacy Raby
 A. Essam Salah & Wendy Radwan
 Albert Raffin
 Manuel & Joan Raffo
 Terry Rainier
 Mukunda Rajagopala & Tumkur
 Shanthala
 Bruce Ramaekers
 David Rampe
 Richard Rampone
 Andrew Rawlins
 Stephen Ray
 John Rehm
 Robert Reiche
 Robert Reid
 Peter & Terry Reigert
 John & Barbara Reihl
 Eric & Virginia Reiner
 Timothy Renner
 Thomas Retseck
 Richard & Lori Reuss
 Darren Rice & Hope Linske-Rice
 Dennis Richard
 Robert Richert
 William Richter
 Stephen & Karen Ricks
 Lorie Rieckers
 Jon Riemke
 Scott & Veronica Sizen Rife
 Rachel Rineheart
 Mark & B. Susan Ringenberg
 Robert Ringholz
 David Ripple
 Kristen & Kathleen Risa
 Christian & Joy Ritz
 Charles Ritzler
 Milo Rivero
 James Roane
 Bruce & Joan Roberts
 Robert & Mary Robison
 Vincent Rock
 Dwayne & Helen Rollag
 Frank Rollo
 Robert & Barbara Ronksley
 Robert Ross
 Ben & Janet Roth
 James & E. Joan Rothel
 William Rothgeb
 Julian & Betty Rouch
 Robert Rouse
 Terry & Melanie Rowe
 Max Rowland
 Ronald Rude
 Edwin & Maureen Rugenstein
 Thomas Ruggieri
 Dale & Beth Ryan
 Timothy Rytlewski
 Donald Samdahl
 V. Alan Sanderson
 Jean Raffin Sangiorgio
 Steven & Amy Sarros
 Paul Satterly
 John Saylor
 Robert & Robin Scaer
 Craig Schaefer
 James & Flora Schafnacker
 William Schaible
 Michael & Joan Scheffler
 Maynard Schenk
 Gene Scherette
 James & Becky Schmidt
 John Schmidt
 Leroy Schmidt
 Paul & Donna Schmidt
 Paul Schmidt
 Alan Schmitt

Deven Schmitt
 Mark Schoeffmann
 Stephen Schollaert
 Rehman Scholz
 Romayne & Joy Schroder
 Thomas & Mary Schubert
 Barry Schueler
 Matthew & Melody Schueler
 Kipp Schulties
 Dennis Schulz
 Paul Schulz
 Robert Schuster
 Thornton & Ruth Schwenk
 James Scott
 Donn Scotten
 John Seager
 L. Ramon Secrest
 Frederick & Anne Seeger
 Leon Seibel
 Arthur & Eva Shak
 Robert Shankland
 Thomas & Janet Sharp
 John & Kathryn Shaw
 Richard Shea
 Dennis & Treva Sheets
 Qizhong Sheng
 Russell Shifley
 Bradford Shilling
 Daniel Shoop
 Richard & Elizabeth Shoupe
 Barry Shriver
 William Shumaker
 Gordon Shunk
 Shafiqul Siddiqui
 Gary & Suzanne Sidors
 Carlyle & Louann Sims
 Raymond Sizemore
 James Skees
 Janet Steen Skees
 Marc & Janet Skillman
 Robert Slinker
 David Sminchak
 Bradley & Barbara Randich Smith
 Daniel Smith
 Don Smith
 Gary Smith
 Keith Smith
 Mark Smith
 Stephen Smith
 George & Beth Snyder
 Robert & Elizabeth Solow
 Kurt & Anne Sommer
 Cheng & Juanita Soong
 George & Iris Soscia
 Paul & Lori South
 Joseph Spahr
 Douglas Spaulding
 Mark Spears
 John Spencer
 John Spiess
 Athanasius Spiridis
 Gary & Bonnie Spraker
 Jeffrey Sriver
 Charles & Ruth St. John
 Kenneth & Bonnie Stalzer
 Alan & Donnabelle Stanley
 George Stanley
 Jeffrey & Terri Stapleton
 James & Jeanne Steele
 Nora Stephenson
 Clyde Stewart
 David Stewart
 Frank & Suzanne Stewart
 Penny Tirschman Stewart
 Greg Stieneker
 Donald & Theresa Stilger
 Carl Stoakes
 O. Frank Storch
 Charles Storey
 Joel Storrow

Larry & Lois Stover
 Vergil & Mary Stover
 William Stover
 Dan Strahl & Vasiliki Keramida
 John & Brenda Stratman
 Elliott Sturgeon
 Philip Stutes
 John Suardi
 Ralph & Karla Sumner
 Aaron Suppinger
 Robert Sutherlin
 Kevin Sutterer
 Howard Swanson
 Thomas Swantko
 Mark Swatek
 Michael Sweeney
 Donald Swing
 John Switzer
 David Sykora
 Samuel Syrotynski
 Peter Talarico
 Richard & Marsha Taliaferro
 Edwin Tanaka
 Gregg Taylor
 Harold Taylor
 Jeffrey Teague & Carol
 Zobel-Teague
 Judith Tempel
 Ronald & Alice Terrel
 Joseph Teusch
 George Thiros
 Tom Thomas
 Jeffrey & Josephine Thompson
 Raymond Thompson
 Sidney Thompson
 Jolyon & Susan Thurgood
 Paul & Pamela Tippmann
 Reginald Tisdale
 Thomas Toberen
 Julius & M. Margaret Toenniessen
 Fujio Tomita
 Miller & Dolores Tonkel
 Michelle Tragesser
 Matthew Travis
 Thomas Traylor
 Michael Traynor
 Theodore Treadway
 Gregory & Celia Trisko
 James Tucker
 James & Susan Tully
 Carl Tuttle
 David Uckotter
 James Underwood
 Rodney Urbano
 Robert Vail
 Douglas Valmore
 Edward Vana
 Terrance & Teresa Vandereyk
 Christy Malast VanBuskirk
 William VanKosky
 David Vaughn
 Robert Vellinger
 Charles Venderley
 Chamakura Venkatadri
 Matthew & Jacqueline Verbiscer
 John Verduin
 Daniel Victor
 Thomas Voisinnet
 Frank Vukovits
 Kenneth Walerius
 Kenneth & Beth Walker
 Richard & Alice Walker
 James & Carol Walsh
 Russell Walter
 Richard Walther
 Cong Wang & Yan Zhang
 Leith Watkins
 Michael Weaver
 Roger Weaver
 Herbert Wedel

Dennis & Sidney Weeter
 Gary Weidman
 Richard Weidner
 Joseph Weimer
 James Weinheimer
 Robert Weinzapfel
 Arthur Weir
 William & Cindy Wells
 William Wells
 Frank & Jeanne Wellwerts
 Christopher Wenaas
 Gregory & Valerie Wendling
 John Wentz
 Thomas Werblow
 Craig & Karen Werner
 Tamera Chambers Wessel
 Mark Westphal
 Robert Wheeler
 Stephen & Pamela Whitcomb
 Eric & Jennifer White
 Thomas White
 Robert & Janet Wiese
 Gregory & Janice Wilcox
 Robert Wilkinson
 Steven Will
 Carl Williams
 Darrell Williams
 Francis Williams
 Stephen Williams
 Steven & Sherry Williams
 Dirk & Elizabeth Willms
 Dale Willis
 Stephen & Carroll Wills
 Thomas Willson
 Jared Wilson
 John Wilson
 Kevin Wilson
 Douglas Wing
 Caroll Winslow
 Alan & Susan Worden Wiseman
 Charles Wishmeier
 Gary Witsman
 William Witzell
 Charles Wiza
 William Wolf
 Thomas & Kathleen Wolff
 Albert & Marlene Wollmann
 Joseph Wood
 Kenneth Wood
 Thomas & Jo Work
 Hadi Yamin
 Larry Yeager
 Steven Yeats
 Charles & Ellen Yoder
 Robert Young
 Jeffrey Yurasovich
 Theodore & Irene Zelasko
 Richard Zielinski
 Gregory & Julie Zumbaugh
 Brenda Zumbun

1997-1998 Corporate/Foundations Donations to Civil Engineering

A & F Engineering Co. Inc.	Fluor Foundation	Parsons Brinckerhoff
Advanced Cement-Based Materials	Force Construction Company	Paul I. Cripe Charitable Foundation Incorporated
Alcoa Foundation	Franklin Engineering Company	Portland Cement Association
American Congress on Surveying and Mapping	Geomechaniki Ltd.	Precast/Prestressed Concrete Institute -Indiana/Ohio
Archer-Daniels-Midland Foundation	Gradex Inc.	Phillips Petroleum Company
Associated General Contractors of Indiana	GTE Foundation	R + B Group Inc.
Bell Surveying & Mapping	Hamilton Hunter Builders, Incorporated	Raineybrook Realty Company
Berns Construction Company Inc.	Indiana Energy Foundation	Randal S. Furomoto & Associates Inc.
Bethel's Goat Farm	Indiana Society of Professional Land Surveyors	San Diego Gas & Electric
Bowen Engineering Corporation	Indiana Surveyors Historical Society	Showalter Trust
Brandt Farm	Innovative Design	Stephen George and Associates
Building Services Inc.	Intel Corporation	T.C. Engineering Company
Camp Inc.	ICR Engineers Inc.	Technology Transfer Tutorials
Casteel Construction Corporation	James P. Morford Incorporated	Thoma Revocable Living Trust
Charles Pankow Builders Ltd.	James S. Jackson Co. Inc.	Transtech Systems Inc
Christopher B. Burke Engineering Ltd	John E. Fisher & Associates PC	Troxler
Colloid Environmental Technologies	John F. W. Koch and Associates Inc.	UOP Inc.
CH2M Hill Foundation	Kiwanis Club of Southwest Little Rock	Verkler Contractor Inc.
CRC Press Incorporated	Maple Point Foundation	Wagner Komurka Geotechnical Group Inc.
Danis Environmental Industries Inc.	M. L. Fruth Inc.	Virginia M. Wagner Estate
Dirk A. and Paige P. Willms Fund	M. L. Kavas and Associates	
Dondanville Laurence A. Trust	McKee Florence Trust	
Downs Clover E. Trust	Milestone Construction Inc.	
Engineering Manufacturing Services Company	Mobil Foundation Incorporated	
Ernest K. Hirata & Associates	Moulthrop Kendall Trust	
Exxon Company U.S.A.	MMM-Invest Incorporated	
	Olympic Shellfish	
	P.R. Bradley & Associates Inc.	



Matching Corporations Contributing to Civil Engineering

Alcoa Foundation	Aggregates
American Electric Power Company	Maytag Corporation Foundation Inc.
American Express Foundation	Mead Corporation Foundation
Ameritech Foundation	Minerals Technologies Inc.
Amoco Foundation Incorporated	Mobil Foundation Incorporated
Andersen Consulting Foundation	Morrison Knudsen Corporation Foundation
Archer-Daniels-Midland	Motorola Foundation
Ashland Inc.	Nationwide Insurance Foundation
Bechtel Foundation	Newport News Shipbuilding
Bellcore	Norfolk Southern Foundation
BellSouth Telecommunications	Occidental Petroleum Charitable Fdn.
Boeing-McDonnell Foundation	Pacific Enterprises
Bristol-Myers Squibb Fdn. Inc.	Philip Morris Companies Inc.
Burlington Northern Santa Fe Foundation	Philips Electronics North America Corporation
Butler Manufacturing Company Fdn.	Phillips Petroleum Foundation Inc.
BMC Foundation	Price Brothers Company
Caterpillar Foundation	Procter & Gamble Fund
Chevron Companies	Radian International
Chevron Products Company	RJR Nabisco Foundation
Dow Chemical Company Foundation	San Diego Gas & Electric
Dow Corning Corporation	Shell Oil Company Foundation
Eli Lilly and Company Foundation	Star Enterprise
Ernst & Young Foundation	State Farm Companies Foundation
Exxon Education Foundation	Temple-Inland Foundation
Fluor Foundation	Texaco Foundation
Foster Wheeler Corporation	Texas Instruments Foundation
GE Fund	Turner Corporation
Halliburton Foundation Inc.	TRW Foundation
IBM International Foundation	Union Pacific Corporation
IPALCO Enterprises Inc.	USA Group
IWC Resources Corporation	USX Foundation Inc.
J. Paul Getty Trust	Waste Management
J.P. Morgan Charitable Trust	Wheelabrator Technologies Incorporated
Kellogg Corporate Citizenship Fund	WMX Technologies Inc.
Martin-Marietta	3M Foundation Inc.

Want to learn more about the research being conducted by Purdue Civil Engineering faculty? Contact *Transitions* editor or e-mail: cenews@ecn.purdue.edu



CIVIL ENGINEER'S CLUB
PURDUE UNIVERSITY



Hire a
CE student.
Check out
this web site!

Purdue to Enter 1999 National Environmental Design Competition: MISSION ~~IMPOSSIBLE~~

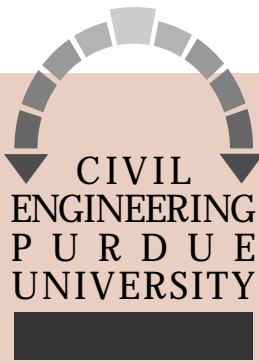
Case Number: CE498B Code word: Environmental Senior Design

Assignment: Plan and solve environmental tasks at Ninth Annual Environmental Design Contest. Travel to Las Cruces, New Mexico, compete in national contest and return to West Lafayette, Indiana, victorious.

Financial support is needed to send Purdue's team to New Mexico in April. Twenty-eight seniors and three faculty members plan to compete April 12 - 15, 1999. The team has constructed a time-line and divided tasks to maximize chances for an overall first-place finish. They will tackle four projects: innovative landfill closure cap, transuranic waste reduction, pipeline waste removal, and In-situ soil decontamination. The team needs support to fund this trip. Half of the \$25,000 expenses have been raised. Your help or your business sponsorship will allow this "academic team" to learn and participate in devising solutions to real, practical problems of current concern. **If you want to learn more about this competition or you want to support the team, call (765) 494-2166, or send e-mail inquiry to: cenews@ecn.purdue.edu, or send your donation with reply on page 27**

Purdue Alum now ASCE President-Elect

Delon Hampton, MSCE '58, PhD '61, and HDR '94 has been elected and inducted as ASCE President-Elect. Hampton's consulting firm, Delon Hampton and Associates, Washington, D.C., recently celebrated its 25th anniversary in business. He is active with Purdue Engineering, now serving on the Dean's Visiting Committee, and in the past serving on the Civil Engineering Advisory Council. Delon is a member of the National Academy of Engineering, and is an Honorary Member of ASCE. As one of his first duties as President-Elect, he attended the 13th Annual CE Professional Development Conference at Purdue on November 5, 1998 and was the featured luncheon speaker.



Help us stay up to date...

Alumni Information Activities Questionnaire

Please help us keep up with your progress by completing this reply card...

Where you live: New address? Yes No Degree & Year of Graduation _____

Name _____

Home Address _____

City State Zip _____

Home phone _____ e-mail address _____

What you do: New position? Yes No

Business Title/Profession _____

Company _____

Division/Address _____

City _____ State _____ Zip _____

Work phone : _____ FAX: _____ e-mail: _____

News about you: (civic achievements, board memberships, professional honors, career activities, family additions)

Use attached envelope to return your information

Cut along dotted line and return in envelope provided

Recent Faculty Memorial Funds Established in Civil Engineering

William L. Dolch Memorial Fund

John Hayes Civil Engineering
Memorial Fund - to support
ASCE student chapter activities.

Gerald A. Leonards Memorial Fund -
for the Beryl and Gerald Leonards Fellowship
in Geotechnical Engineering

Joseph L. Waling Memorial Fund -
to be used for student organizations

William L. Wood, Jr. Memorial Fund -
to be used for environmental/
hydraulic engineering fellowships

Pai Tao Yeh Memorial Scholarship
in Civil Engineering

Other Faculty Memorial Funds

Don E. Bloodgood
Environmental Engineering Fund

John E. Goldberg Memorial Fellowship Fund

Martin J. Gutzwiller Memorial Fund

Warren E. Howland Scholarship
in Civil Engineering

B.B. Lewis Chi Epsilon
Leadership Fund

Bevan B. Lewis Scholarship
in Civil Engineering

Ben Petty Memorial Scholarship
in Civil Engineering

Frank W. Stubbs, Jr.,
Civil Engineering Scholarship

Gerritt H. Toebes Memorial Fund

Pai Tao Yeh Memorial Fellowship
in Civil Engineering

Eldon J. Yoder Memorial Fund

An Opportunity to Say Thank You

Civil Engineering courses have been offered at Purdue since the University began teaching students in 1874. The first engineering graduate was a civil engineer (1878). The first African-American graduate at Purdue was a civil engineer (1894). And the first female engineering graduate was a civil engineer (1897). Our program has stood the test of time and our 13,000 graduates have achieved many successes in their lifetimes. Someone helped all these people get there. Our Faculty.

The prestige of the School can be directly attributed to the caring teachers and innovative researchers who have graced our program throughout the years. You now have the opportunity to give something back in honor of these great individuals. You knew many of them. They taught you or maybe they taught the professors who taught you. Maybe they wrote your textbook. Perhaps they developed the breakthrough research that makes doing your job easier. No matter how your life has been influenced by a Civil Engineering faculty member, I ask you to consider making a contribution to the School of Civil Engineering in their memory to help today's civil engineering students.

Several funds have been established over the years honoring our faculty. The list at the left indicates the names of the funds. In the last two years the School has lost five of these faculty members due to death.

Contributions you make will be used as specified in the funding agreements. Of particular interest is a challenge pledge made possible by Mr. David Leonards, son of Professor Gerald Leonards who passed away in February 1997. Mr. Leonards will match your gift (dollar for dollar) made to the Gerald Leonards Memorial Fund. His offer has a \$100,000 matching limit.

Support for our School in the form of gifts comes from a core group of alumni who represent less than 20% of our total living alumni. Yet, nearly all of our alumni are pleased with their education and the career opportunities their education opened up for them. Please consider giving a gift, in any amount, as a gesture of thanks to our faculty.

Best Wishes,



Vincent P. Drnevich
Professor and Head

P.S. Send your gift in the envelope provided along with the reply form (opposite page)

Yes! I want to support the School of Civil Engineering.

My contribution is designated as shown below. This is my our gift.

\$_____ William L. Dolch Memorial

\$_____ John Hayes Civil Engineering Memorial

\$_____ Gerald A. Leonards Memorial (Gift to be matched 1:1 by Leonards family)

\$_____ William L. Wood, Jr., Memorial Fellowship

\$_____ School of Civil Engineering Discretionary Fund

\$_____ Other (Please designate) _____

(To include helping the Senior Design competition trip to New Mexico. See page 24.)

Giving recognition

The engineering gift clubs recognize total giving to engineering, regardless of designation. President's Council recognizes total giving to the University, including your gifts to engineering. As a President's Council member, you maintain your membership in the School of Engineering Dean's Club and the Civil Engineer's Club for gifts to CE.

Engineering Gift Clubs

Dean's Club

Lifetime Member

One-time gift of \$25,000 or total gifts of \$50,000

Dean's Club Benefactor \$25,000 annually

Dean's Club Sponsor \$1,000 annually

Dean's Club \$500 annually

Civil Engineer's Club \$250 or more annually

President's Council

Cornerstone \$1,000 annually

Pillar \$2,500 annually

Tower \$5,000 annually

Keystone \$100,000 cumulative giving

Pinnacle \$1,000,000 cumulative giving

• Please make your check payable to the **Purdue Foundation** and mail it, with your completed form, in the enclosed envelope to the Purdue Foundation, 1801 Purdue Memorial Union, West Lafayette, IN 47907.

• Or to pay by credit card, complete the following:

Credit Card Authorization

I authorize \$_____ to be charged to my account.

VISA Mastercard Discover

Account No. _____

Expiration Date ____-____

Print name as it appears on credit card

Signature

Date

▼ Matching Gifts: Increase the value of your contributions by taking advantage of your employers matching gift program.

Update recent changes to information provided to Purdue in the last six months.

Name _____ Spouse Name _____

Home Address _____

Phone _____ FAX _____ E-mail _____

Business Title _____ Spouse Business Information _____

Business Name _____ Business Name _____

Business Address _____ Business Address _____

Business Phone _____ Business Phone _____

I / we have provided for Purdue in a will or trust agreement. I would like information about providing for Purdue in my will.

I would like information about providing for increased income in retirement years through a planned gift.

Thank You for Your Contribution

Calendar of Events



Purdue graduates Bob and Sara Law with son Keith, Purdue freshman engineer, seem to have their sights on something south of the CE Building.

April 24, 1999 - CE Breakfast, 8 - 10 a.m., Civil Engineering Building. All CE alumni and friends and their families are invited.

April 6, 1999 - 20th Anniversary Celebration - Recognizing the 20th anniversary of the first CNE/CEM graduating class. Many activities planned for the day including an Open House and reception for alumni, faculty, and industry guests. For more information contact Professor Bob Tener at (765)494-2241.

April 30, 1999 - CE Advisory Council Meeting.

April 30, 1999 - Dedication of Burke Undergraduate Hydraulics Lab in the Civil Engineering Building.

June 18, 1999 - CE Open - Golf, tennis and picnic. Reservations required. For more information call (765)494-2166.



<http://ce.ecn.purdue.edu/CE>

Transitions is published semiannually for alumni, faculty and staff, parents, and friends of the School of Civil Engineering at Purdue University. Send comments, news, and address changes to: *Transitions* Editor, School of Civil Engineering, Purdue University, 1284 Civil Engineering Building, West Lafayette, Indiana 47907-1284 or e-mail: cenews@ecn.purdue.edu



CIVIL ENGINEERING
TRANSITIONS

Purdue University 1284 Civil Engineering Building
West Lafayette, IN 47907-1284

Address Correction Requested

Non-Profit Organization
U.S. Postage
PAID
Purdue University