

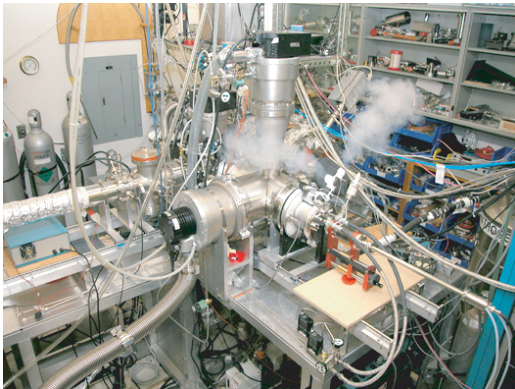
# ROWLAND INSTITUTE AT HARVARD

## ROWLAND JUNIOR FELLOWS PROGRAM



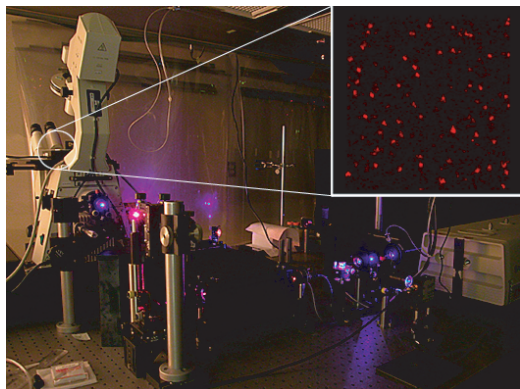
Rowland Junior Fellow-Zvonimir Dogic.

This fall the Rowland Institute at Harvard welcomes three more Rowland Junior Fellows. They were selected to perform independent experimental research for five years, with full institutional support and access to the Institute's outstanding technical and scientific resources. The number of Rowland Junior Fellows will increase from the current five to about ten over the next three years. Candidates in all the natural sciences (physics, chemistry, biology,...) as well as in engineering will be considered, with special attention given to interdisciplinary work and to the development of new experimental methods.



Trapped Ion Electron Diffraction.

The Fellows will be selected for their scientific achievement, the creativity of their ideas, their resourcefulness as experimentalists, and their ability to work independently.



Single-molecule fluorescence spectroscopy.

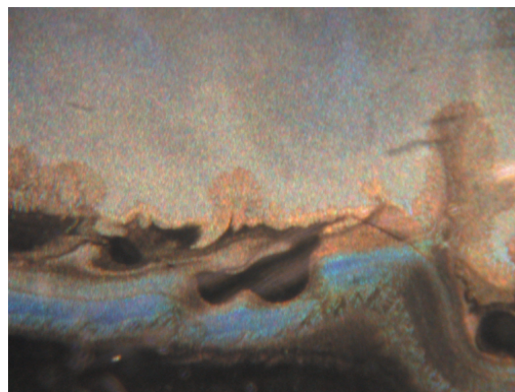
The appointment will be for a maximum of five years, with continuation past three years contingent on a favorable internal review. Although no rigorous restriction is placed on prior experience and career path, the typical new appointee will have just completed a Ph.D. or have up to two years postdoctoral experience.

The salary will depend on field and years of experience, but will be at least \$55,000 a year.

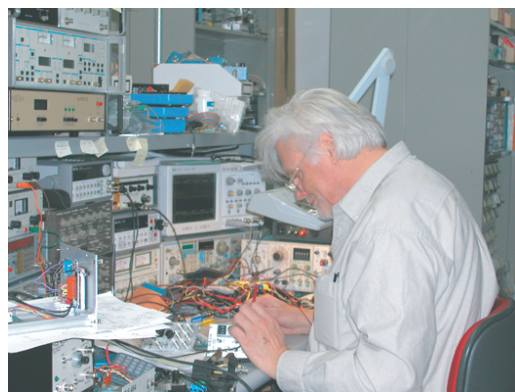
Resources at the disposal of the Fellows include laboratory space, initial set-up costs, operating costs, the help of a technician and a postdoc or student, and unlimited access to the Institute shops and services (mechanical, electronic, computer and information). The Fellows will have intellectual support from the Rowland Senior Fellows and from the members of the Harvard faculty. Applicants should send a *curriculum vitae* and a one-page research proposal, and have three letters of reference sent to:

Dr. Michael M. Burns  
Rowland Junior Fellows Program  
Rowland Institute at Harvard  
100 Edwin H. Land Boulevard  
Cambridge, MA 02142

Questions on the program should be directed to [rjf@rowland.harvard.edu](mailto:rjf@rowland.harvard.edu). Further information on the Rowland Institute can be found at <http://www.rowland.harvard.edu>.



Swarm of *Serratia marcescens* transferred to PDMS surface.



Electronics engineering laboratory