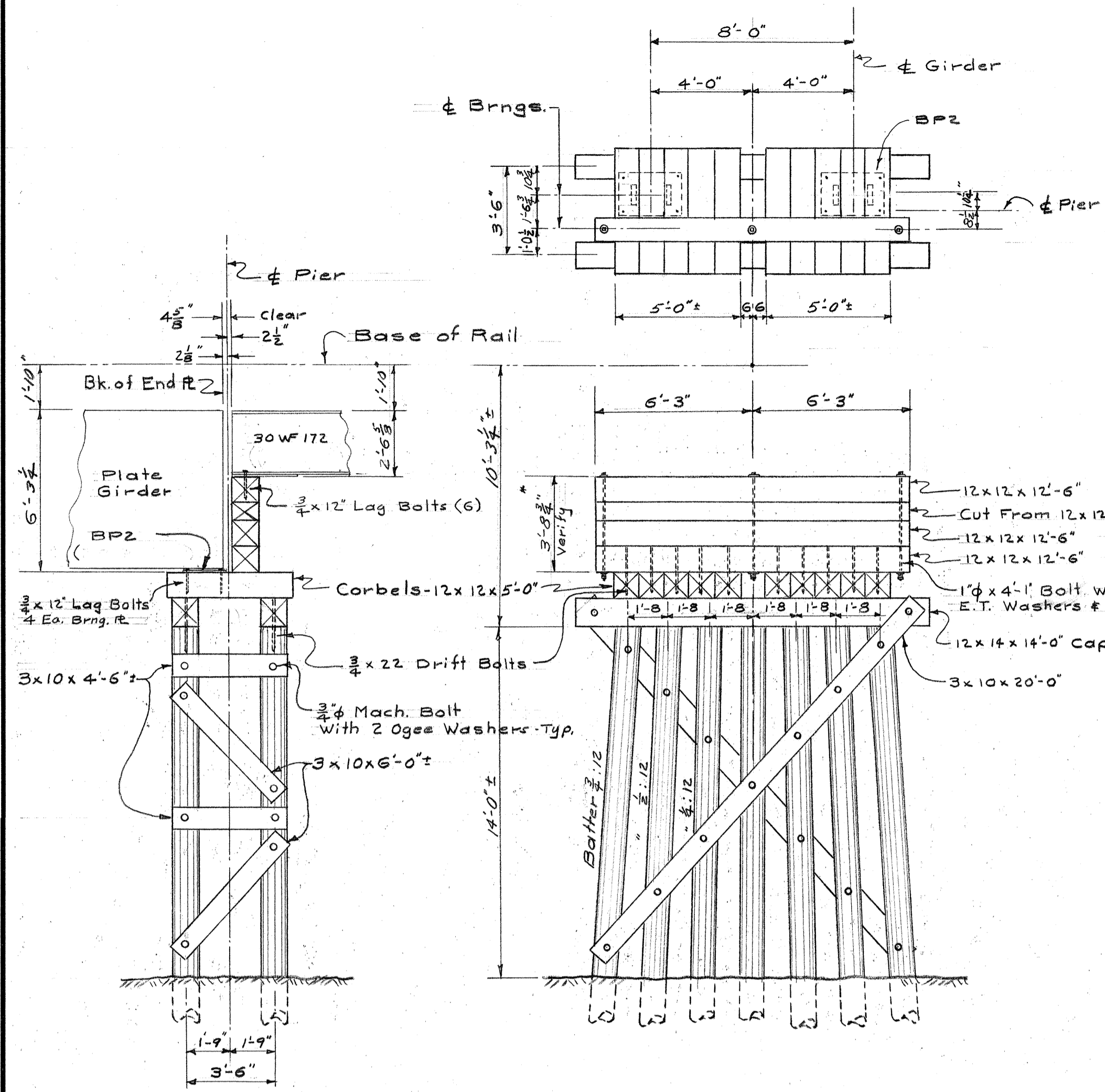


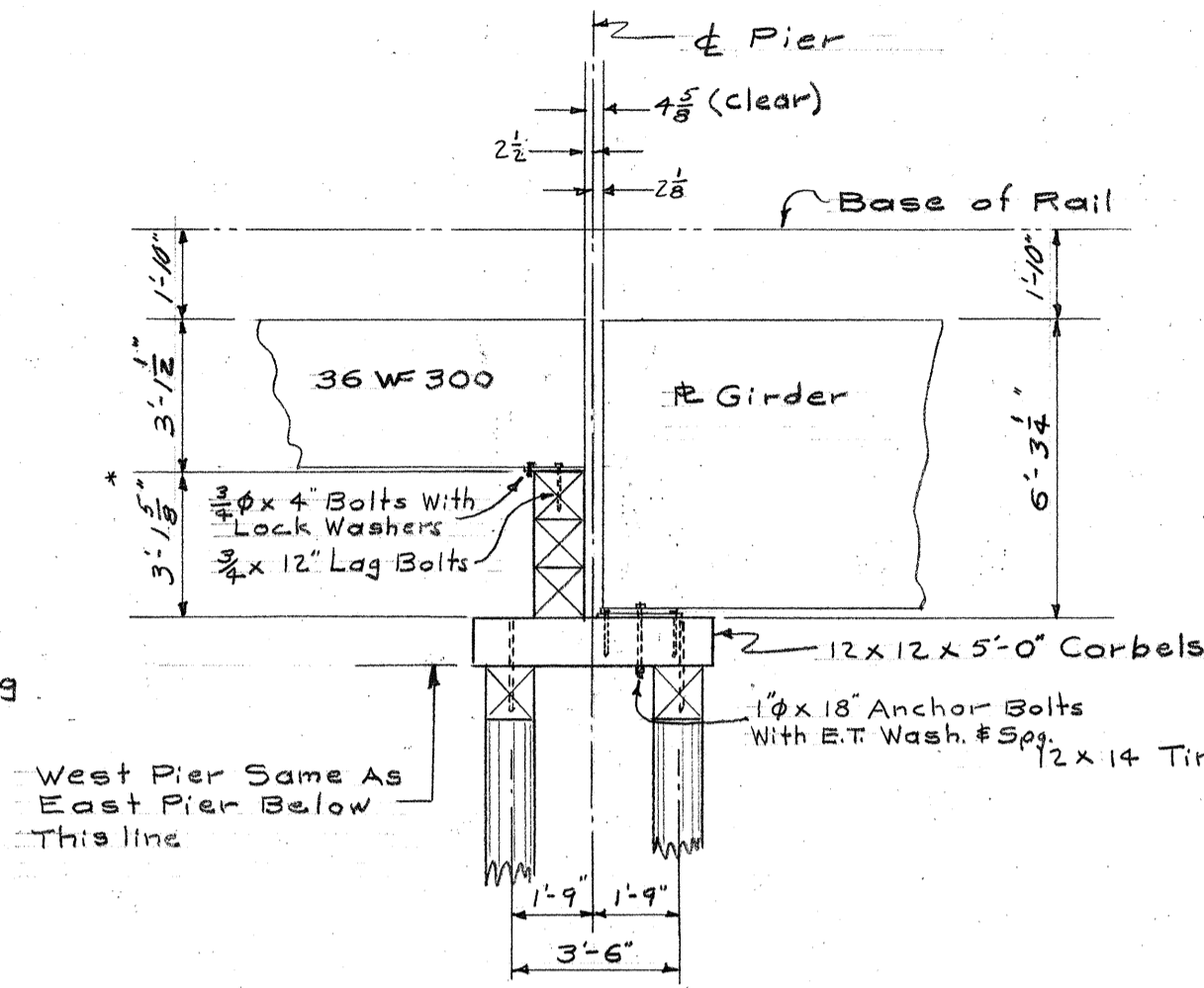
A. F. E. NO. PA 9260 DATE COMPLETED 10-22-1969

<b>WABASH RAILROAD COMPANY</b> OFFICE OF CHIEF ENGINEER	
STRUCTURE: BRIDGE 530	
LOCATION: ROCKFIELD, IND.	
DIVISION: DECATUR	
SCALE: 1/4" = 1'-0"	SHEET NO. 1
DATE: 5-23-68	NO. OF SHEETS 5
DRAWN BY: C.F.H.	QUANTITIES BY:
CHECKED BY:	CHECKED BY:
REVISED:	

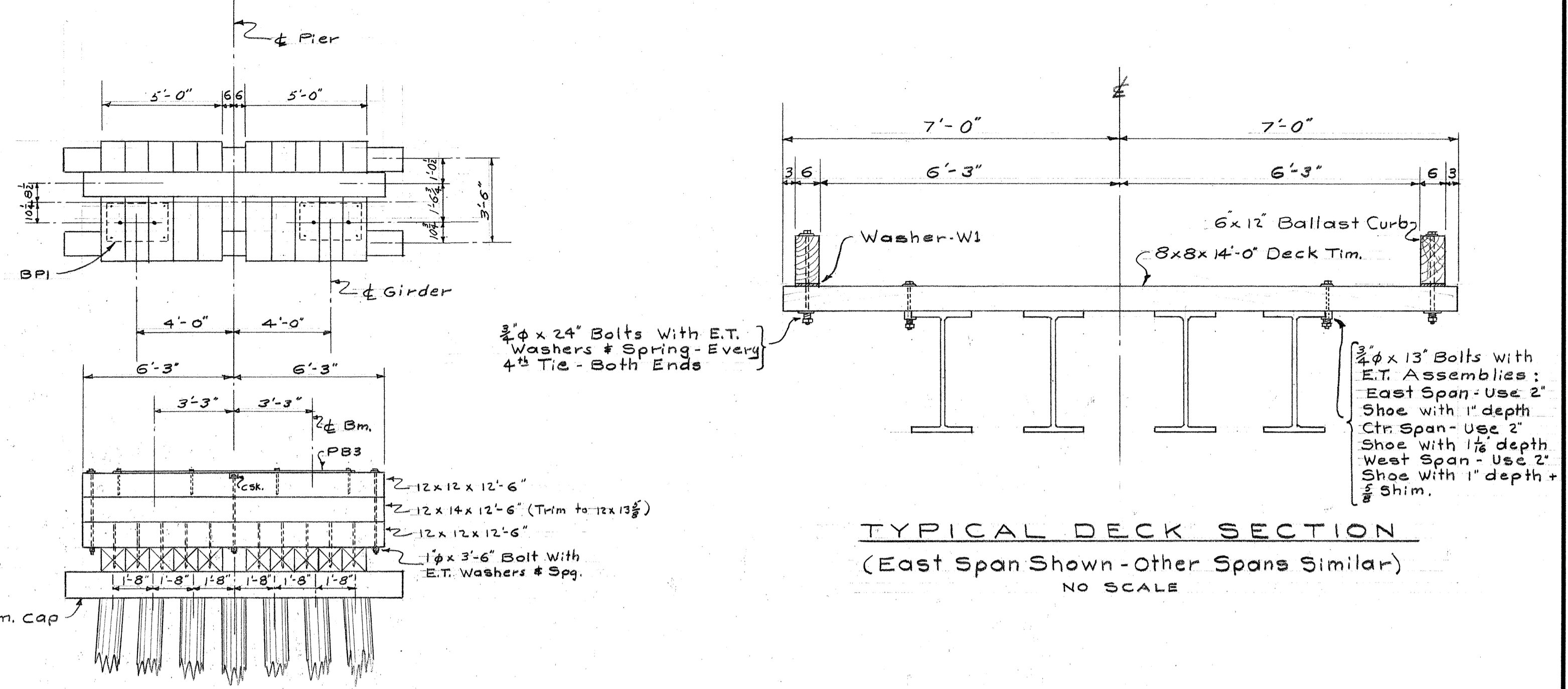
\* Note: Track Gradient Must Be Considered When Computing Height of Pony Bent



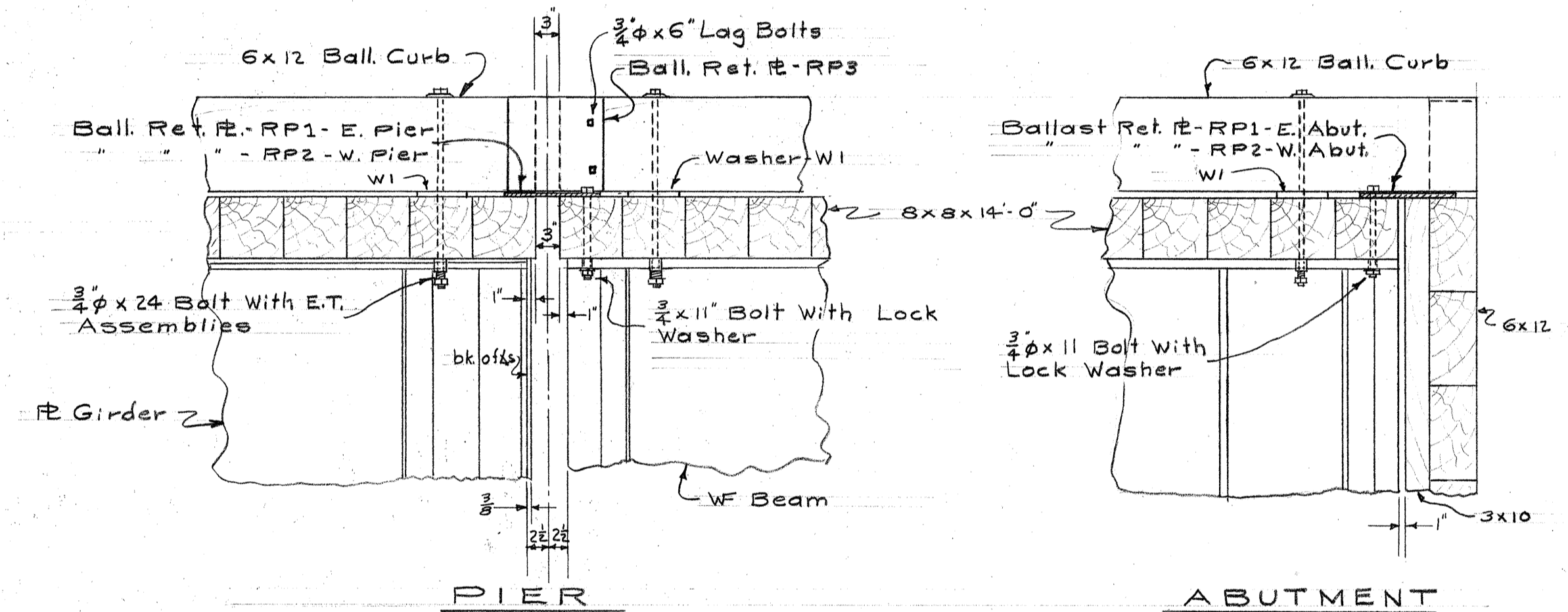
EAST PIER



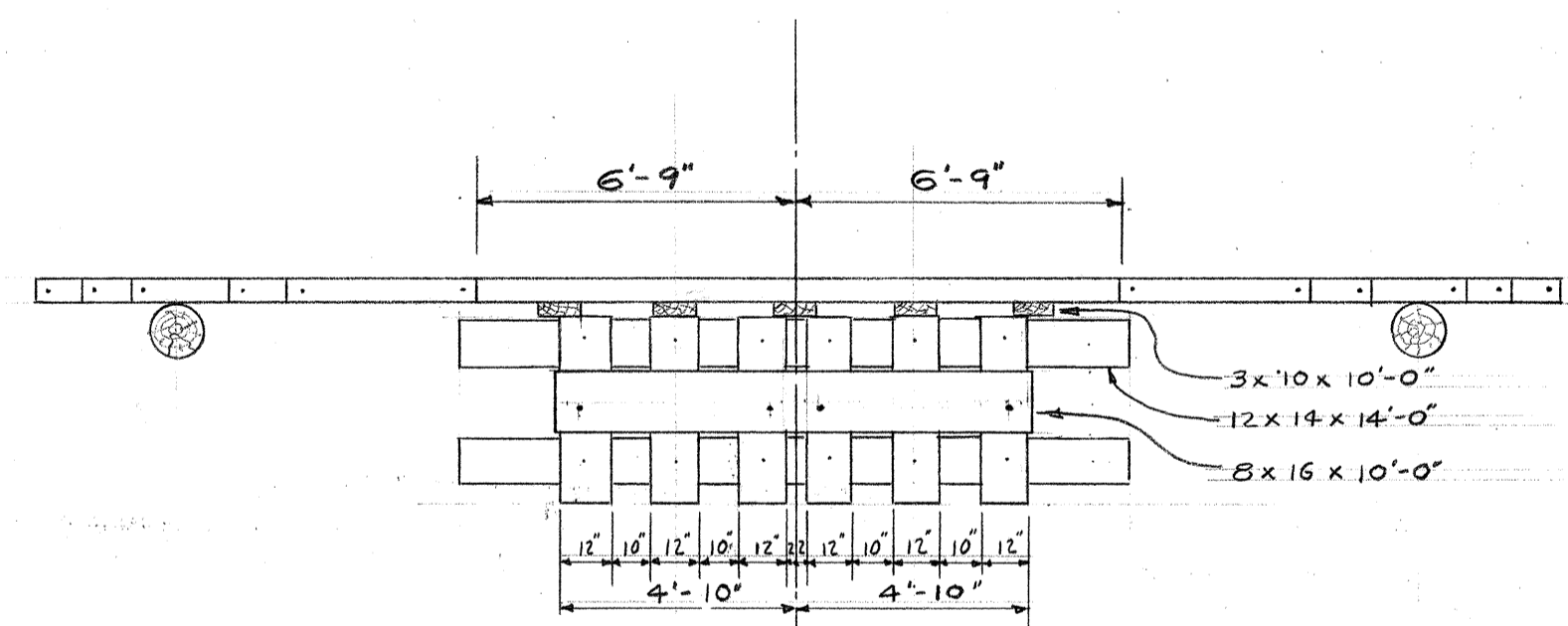
WEST PIER



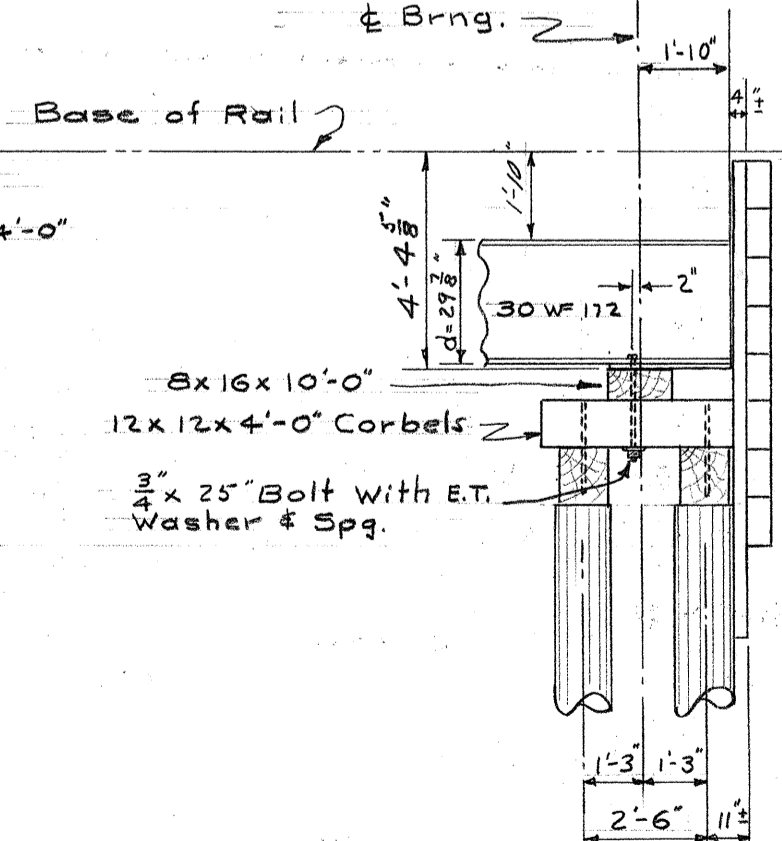
TYPICAL DECK SECTION  
(East Span Shown-Other Spans Similar)  
NO SCALE



PARTIAL DECK SECTIONS  
(NO SCALE)



EAST ABUTMENT



WEST ABUTMENT

(Details Not Shown Are Same As East Abutment)

A. F. E. NO. PA 9260 DATE COMPLETED 10-22-1969

WABASH RAILROAD COMPANY  
OFFICE OF CHIEF ENGINEER

STRUCTURE: BRIDGE 530

LOCATION: ROCKFIELD, IND.

DIVISION: DECATUR

SCALE: 1/4" = 1'-0"

DATE: 6-3-68

DRAWN BY: CFH

CHECKED BY:

REVISED:

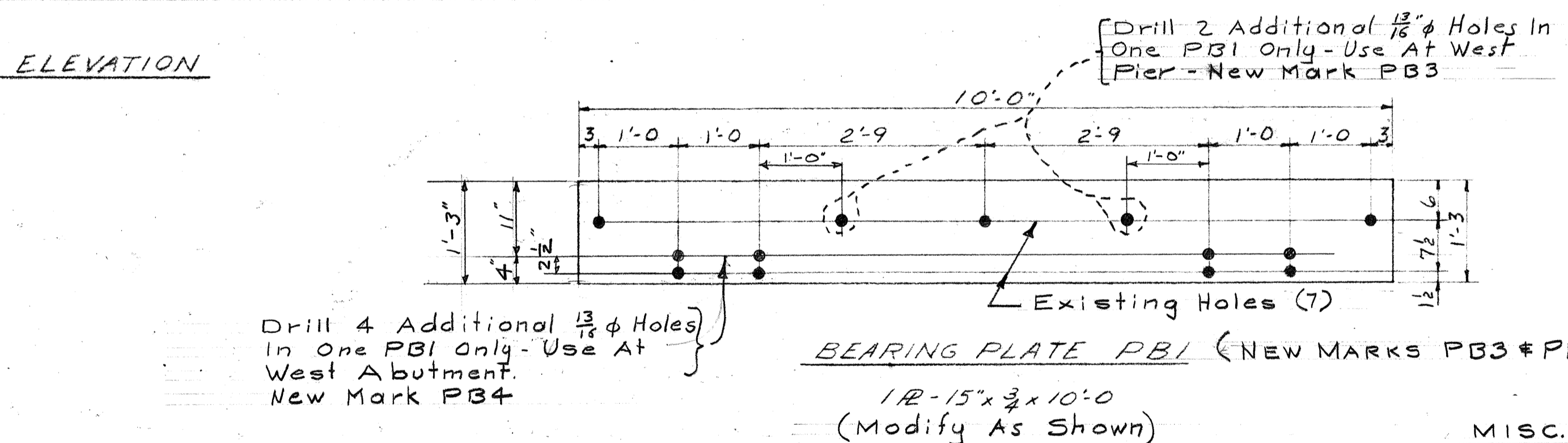
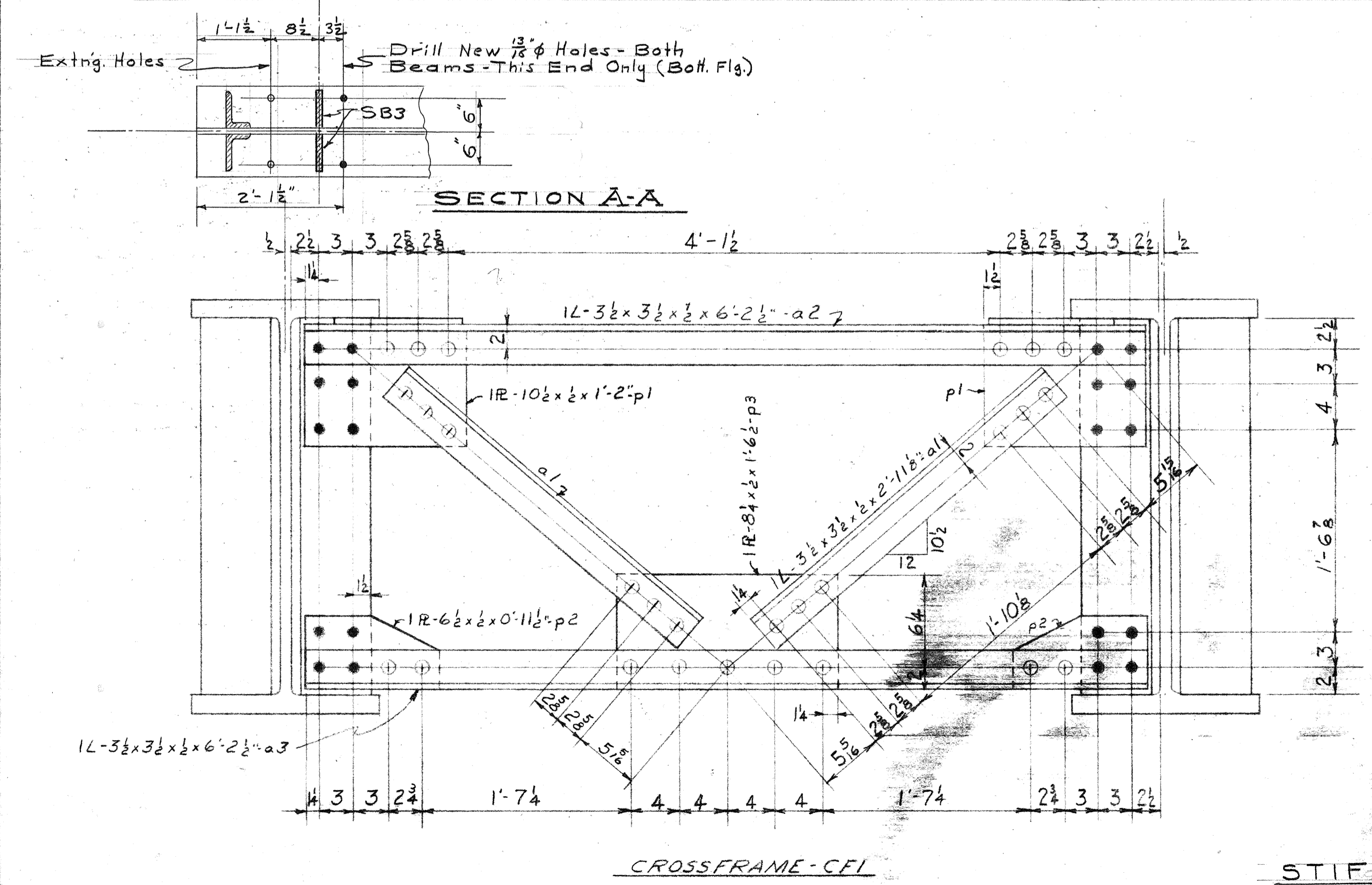
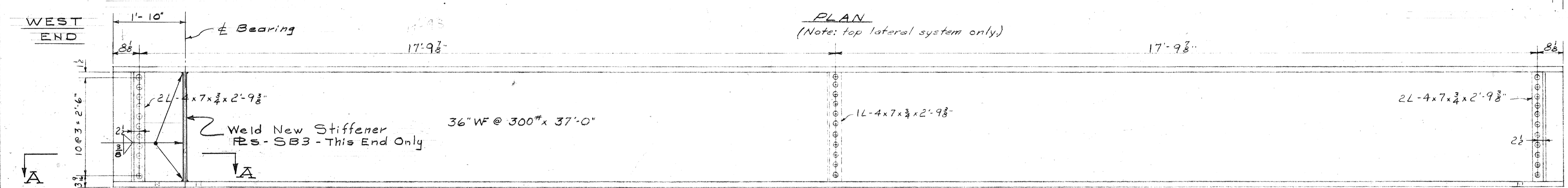
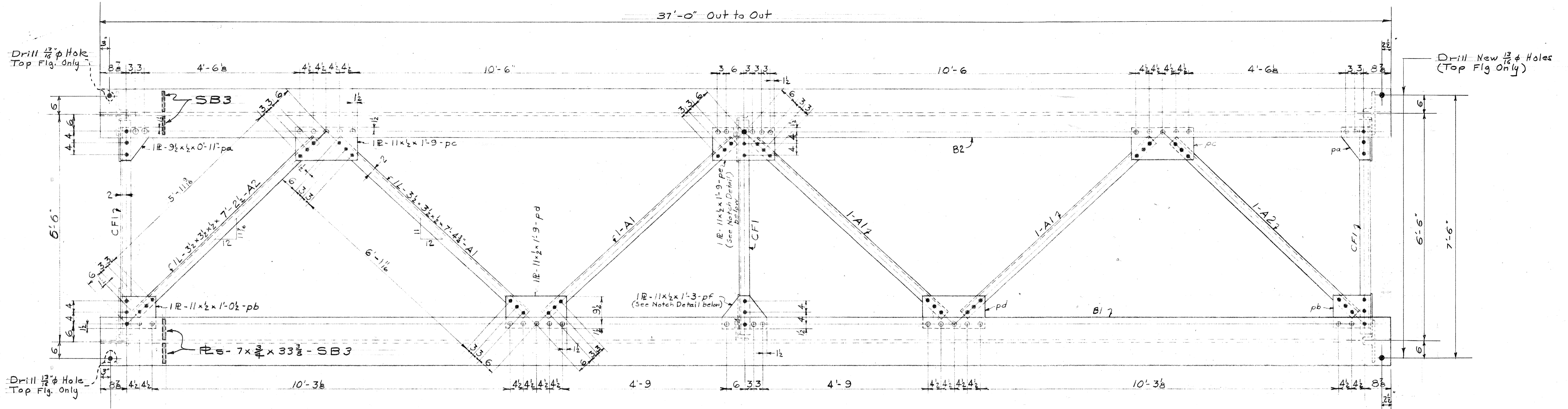
SHEET NO. 2

NO. OF SHEETS 5

QUANTITIES BY:

CHECKED BY:

CHECKED BY:



- MISC. NOTES**
1. Second Hand Steel Salvaged From Br. 2901 - Moberly Division
  2. All Holes 1/8" Unless Noted
  3. Field Connections To Be With H.S. Bolts

SECOND HAND STEEL				
NO.	OLD MARK	NEW MARK	DESCRIPTION	REMARKS
3	CFI	CFI	Cross Frame	Reuse As Is
4	A1	A1	Lateral	" " "
2	A2	A2	"	" " "
1	B1	B1	WF Beam	Drill Holes Top & Bott. Flg. Add Stiff.
1	B2	B2	"	" " " " " " "
1	PB1	PB3	Bearing Plate	Drill 2 New Holes
1	PB1	PB4	"	" " " " " " "
NEW STEEL				
4	-	SB3	Stiffener Bar	Field Weld To B1 & B2

A.F.E. No. **PA 9260** DATE COMPLETED **10-22-1969**

**WABASH RAILROAD COMPANY**  
OFFICE OF CHIEF ENGINEER

STRUCTURE: **BRIDGE 530**

LOCATION: **ROCKFIELD, IND.**

DIVISION: **DECATUR**

SCALE: **3/8" = 1'-0"**

DATE: **5-29-68**

DRAWN BY: **CFH**

CHECKED BY:

REVISED:

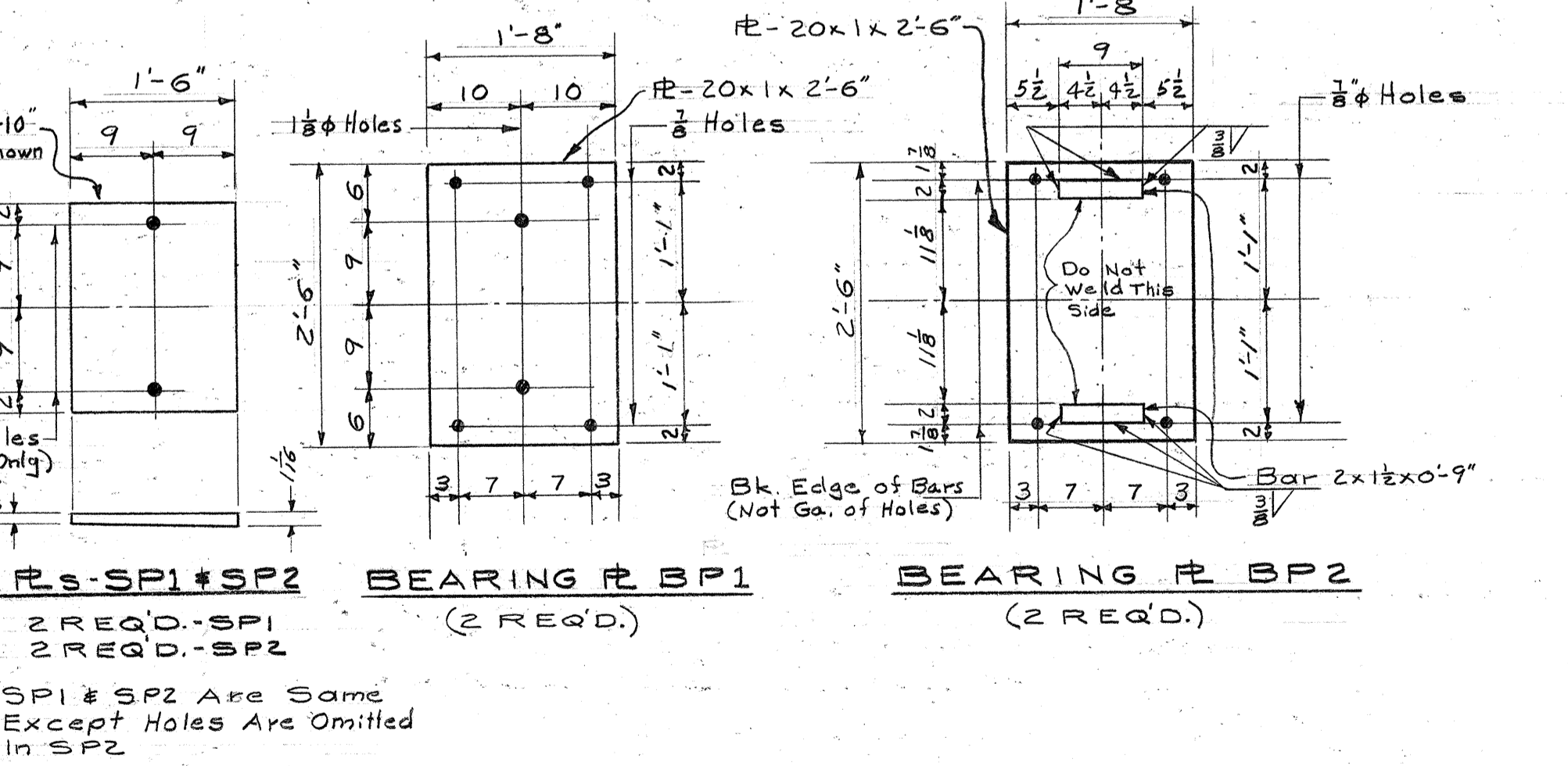
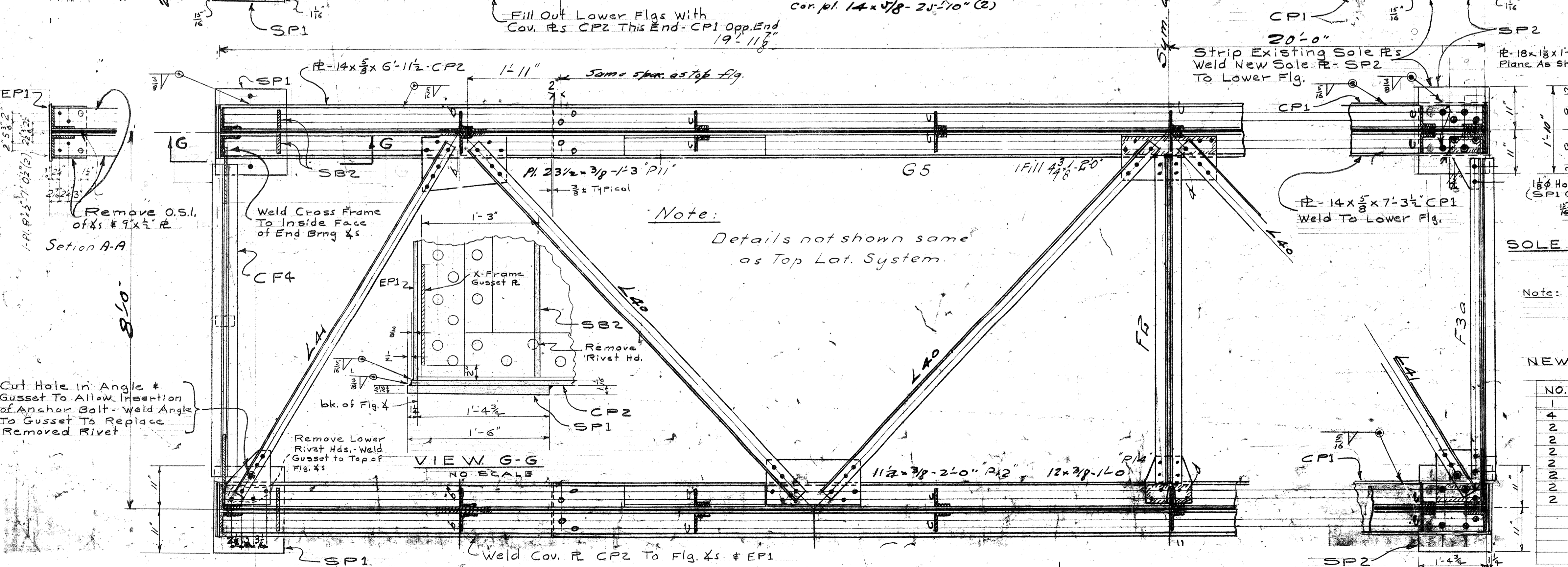
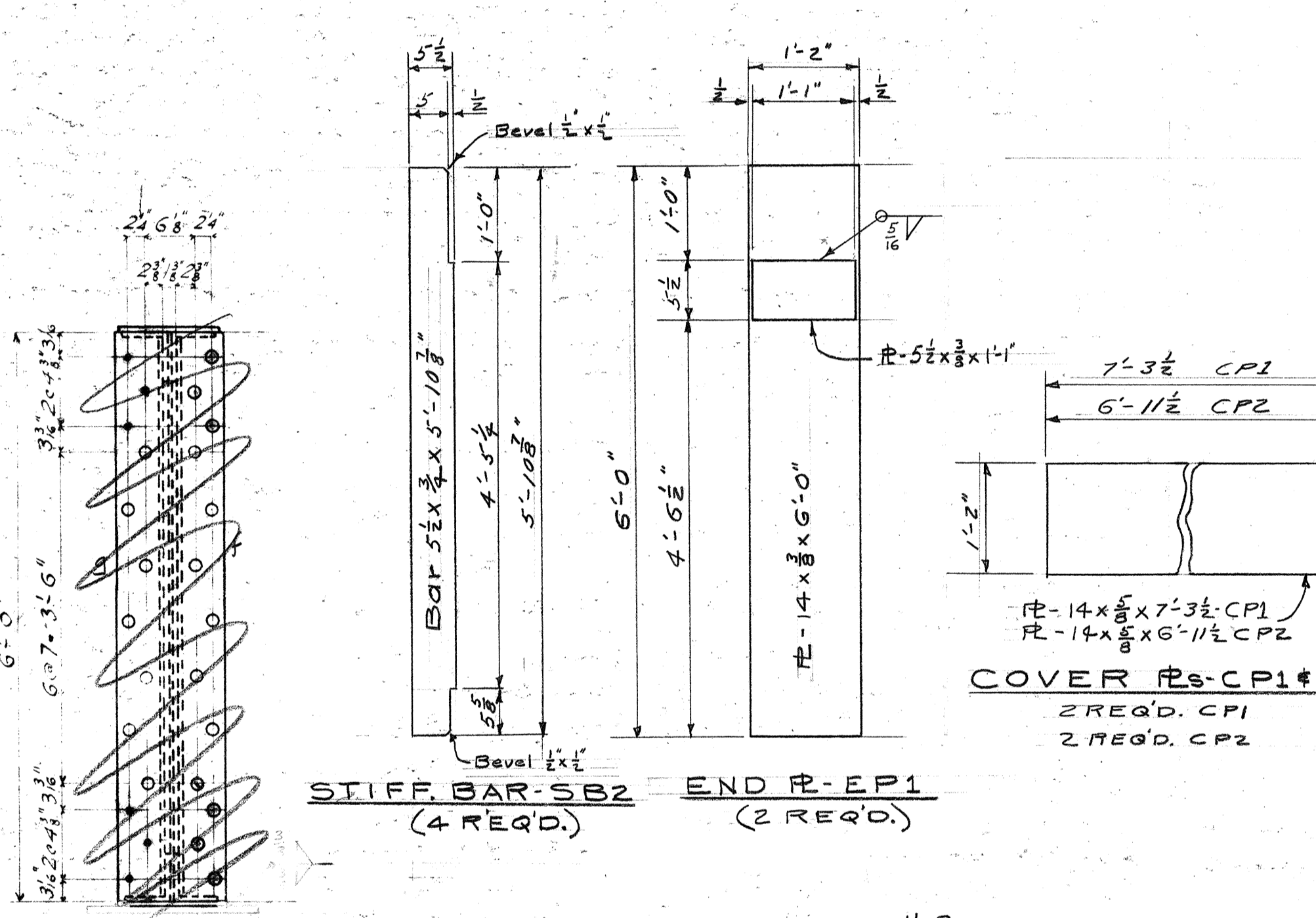
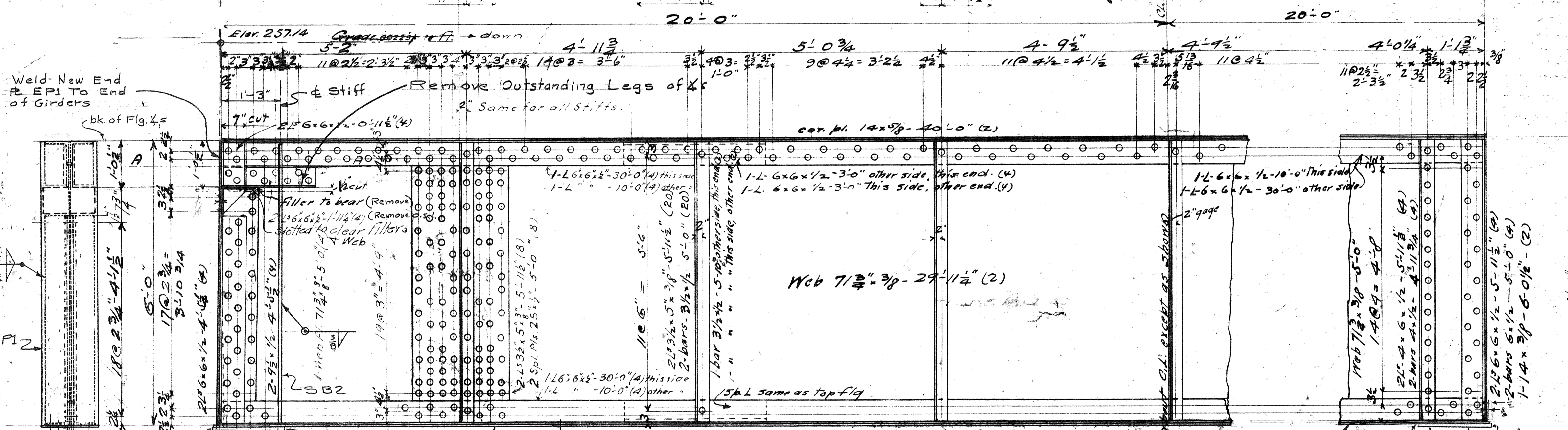
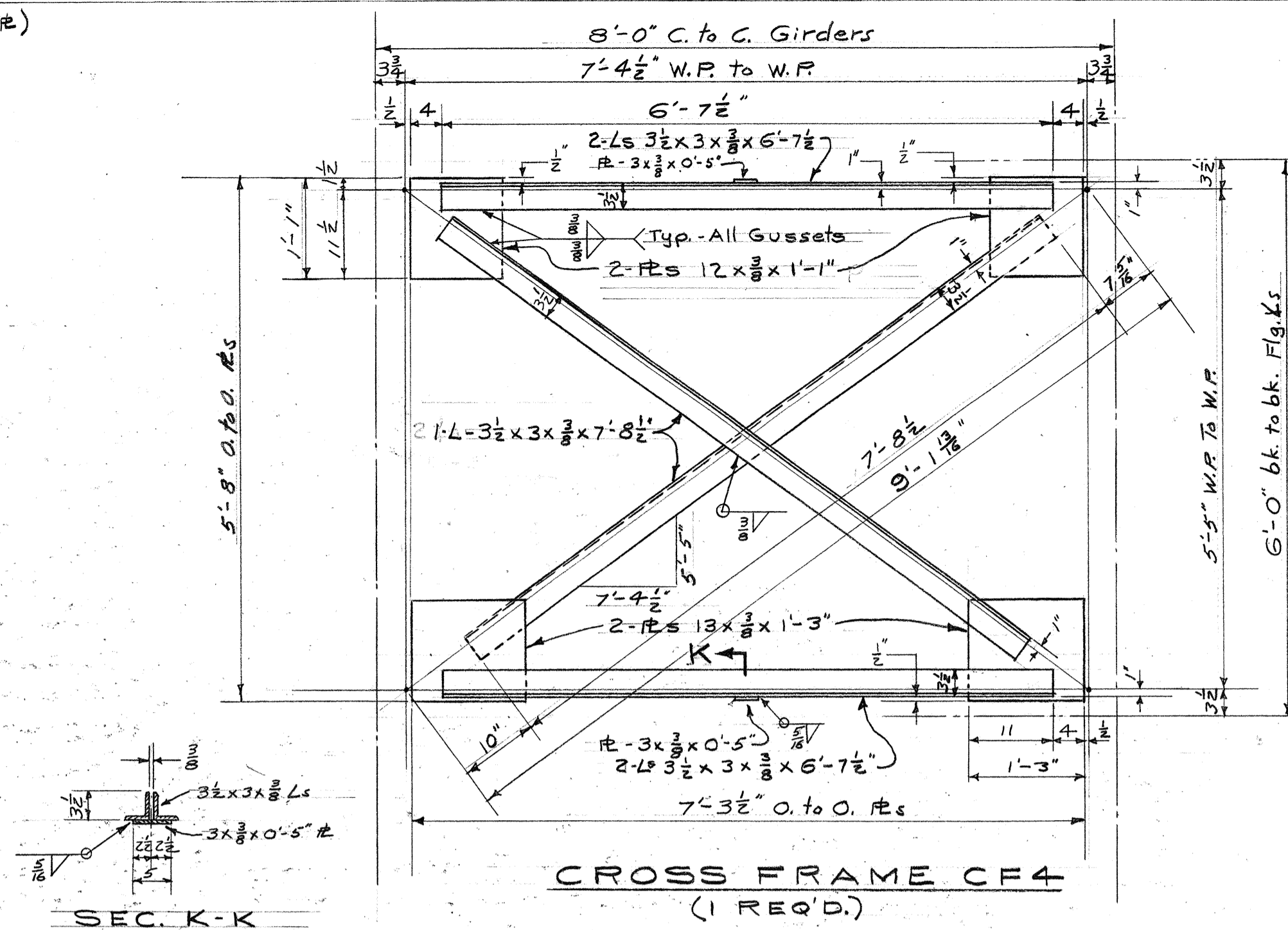
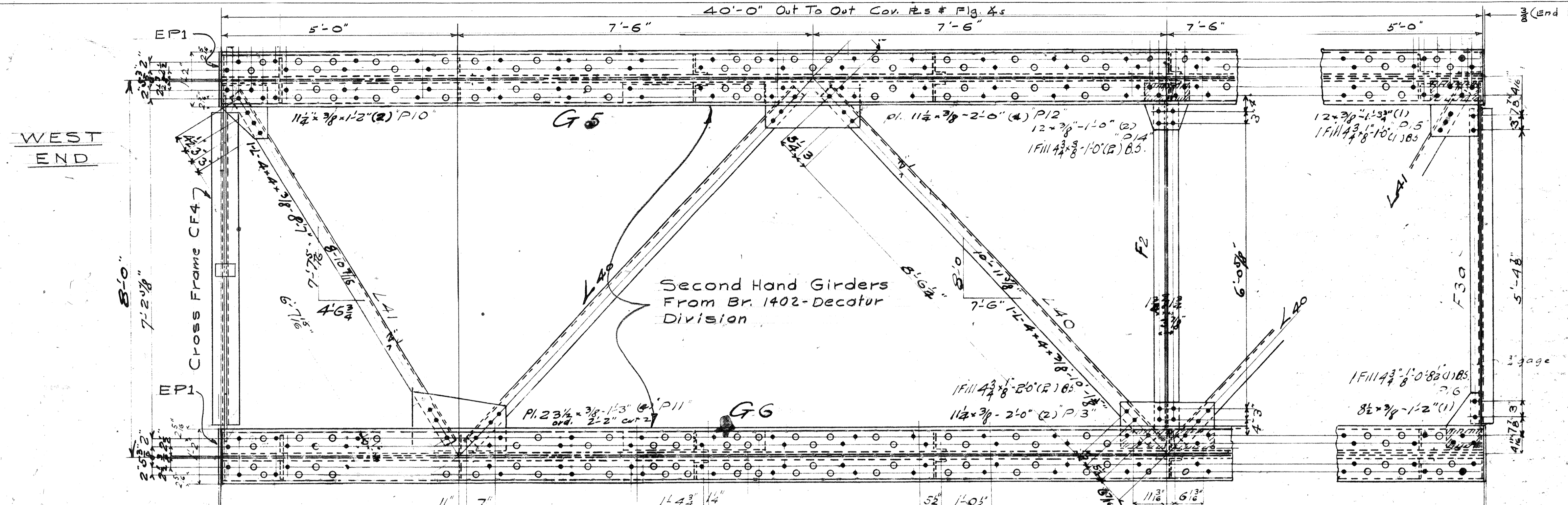
**STEEL DETAILS**

**WEST SPAN**

SHEET NO. **3** NO. OF SHEETS **5**

QUANTITIES BY

CHECKED BY:



NEW STEEL REQ'D. - THIS SHEET

NO.	MARK	DESCRIPTION
1	CF4	Cross Frame
4	SB2	Stiffener Bar
2	EP1	End Plate
2	CP1	Cover Plate
2	SP1	Sole Plate
2	SP2	Sole Plate
2	BP1	Bearing R
2	BP2	Bearing R

PA 9260 10-22-1969

NORFOLK & WESTERN RY. CO.

STRUCTURE: BRIDGE 530

LOCATION: ROCKFIELD, IND.

DIVISION: DECATUR

SCALE: 3/4" = 1'-0"

DATE: 5-29-68

DRAWN BY: CBN

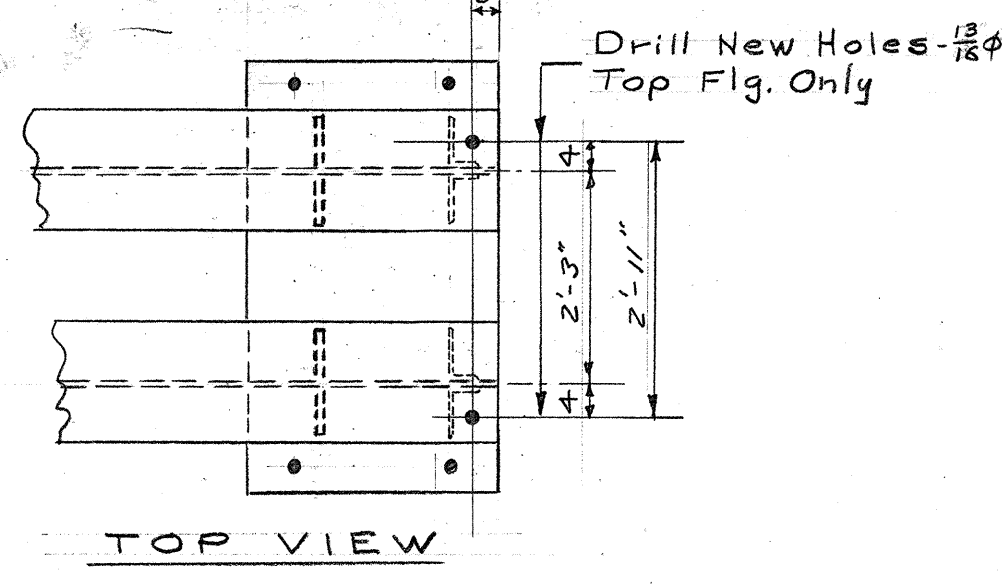
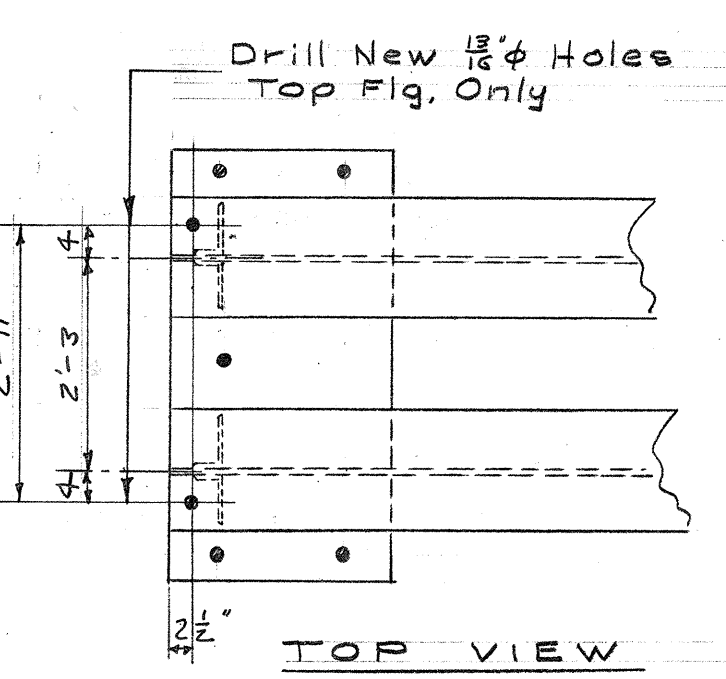
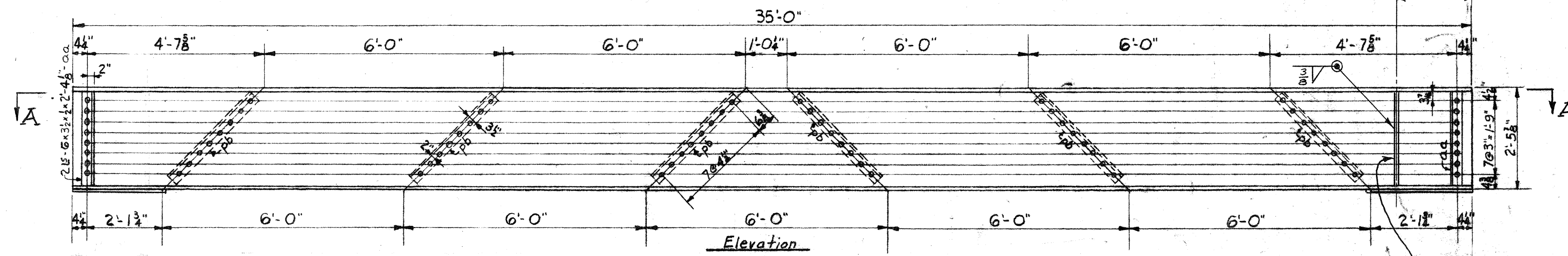
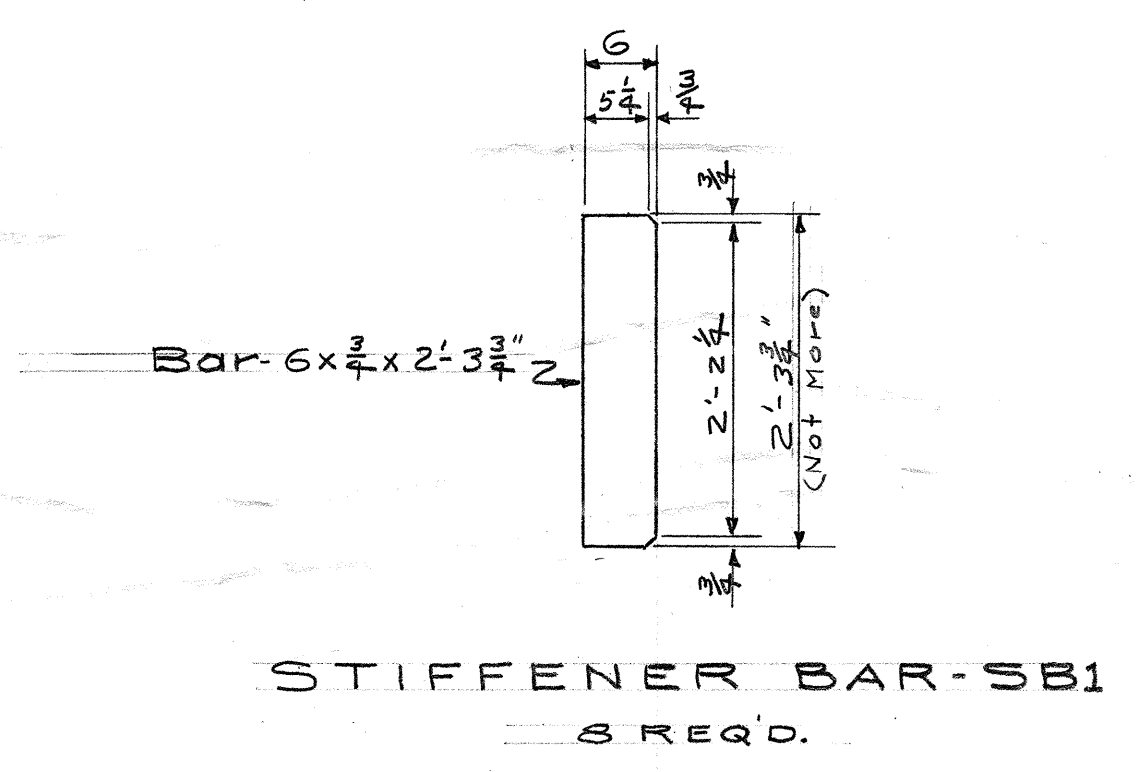
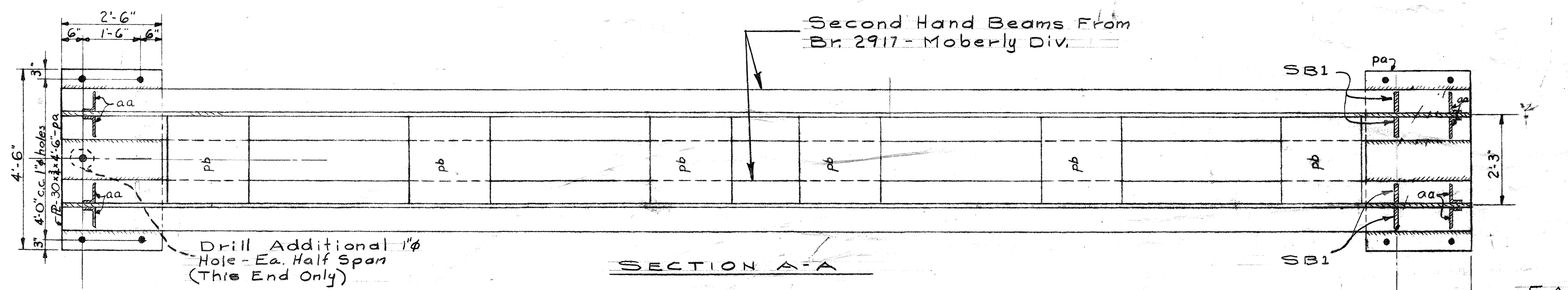
CHECKED BY:

REVISIONS:

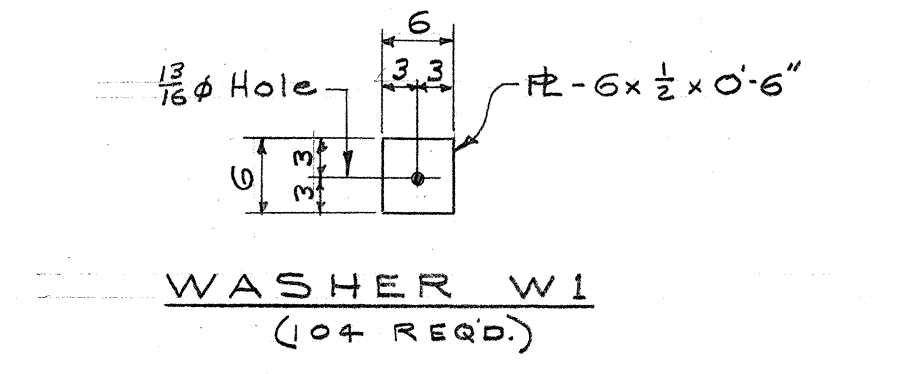
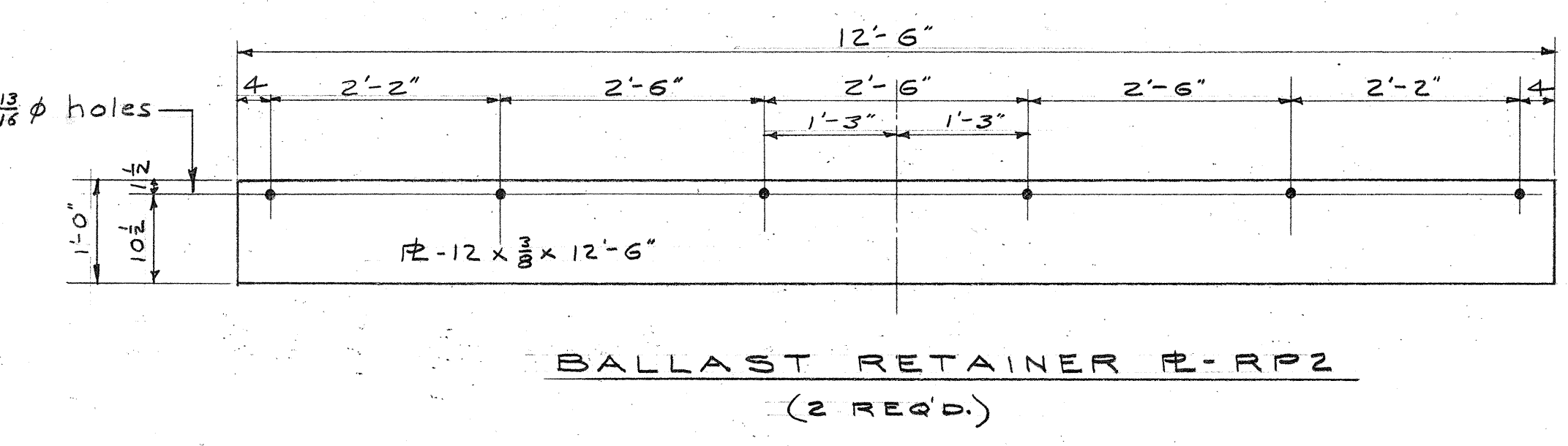
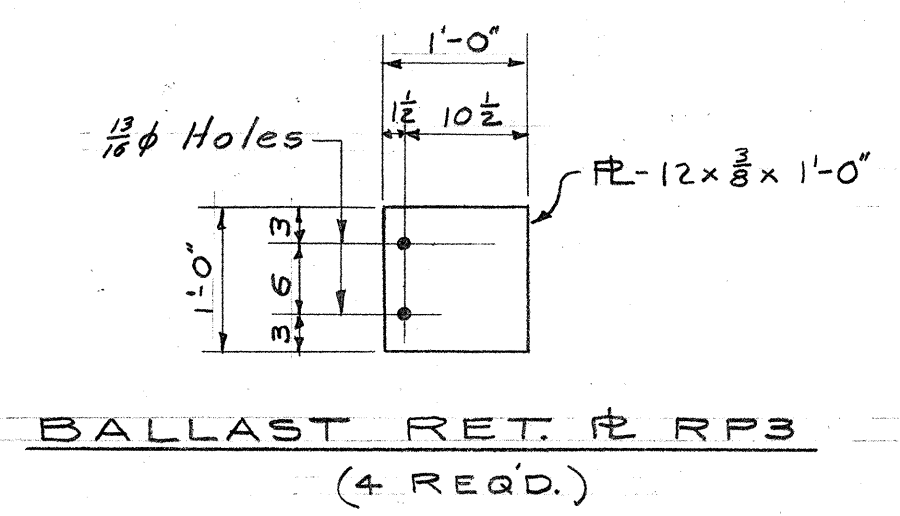
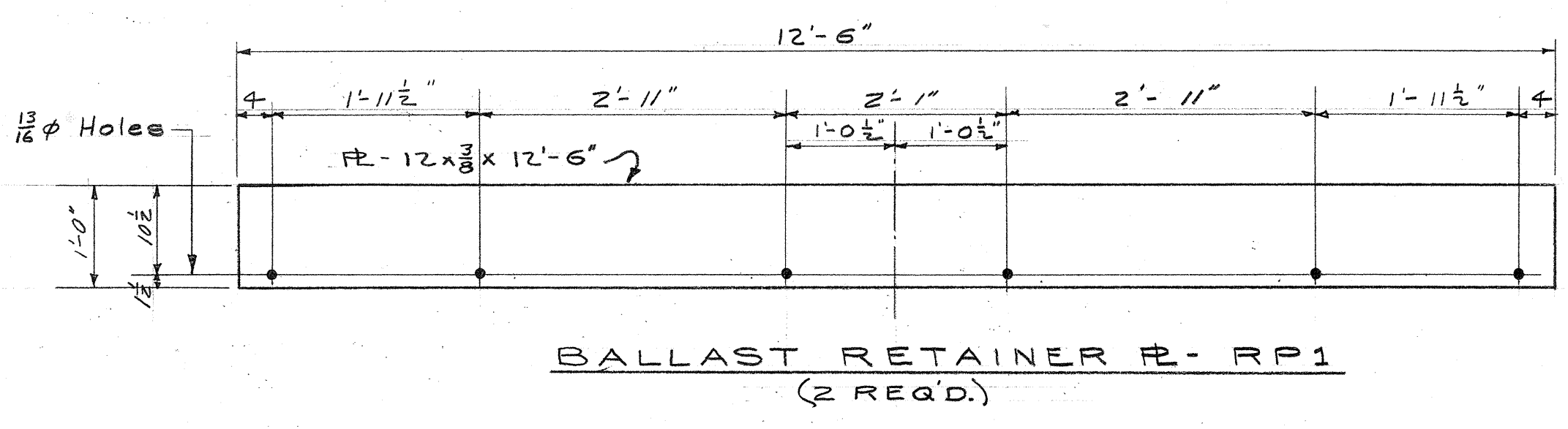
SHEET NO.	NO. OF SHEETS
4	5

QUANTITIES

CHECK



**Elevation HALF-SPAN-BI**  
 - 2 Req'd.  
 2-30" WF @ 172# x 35'-0" - ba  
 8-6x3 1/2 x 2-4 1/2" - aa  
 6-R-32 1/2 x 1/2 x 2-9 3/8" - pb  
 2-R-30 x 3/4 x 4'-6" - pa  
 (1/2" = 1'-0")



**STEEL REQ'D-THIS SHEET**

NO.	MARK	DESCRIPTION
8	SB1	Stiffener Bar
2	RP1	Ballast Retainer R
2	RP2	"
4	RP3	"
104	W1	Washer

**NEW STEEL REQ'D-SHEETS 3,4#5**

NO.	MARK	DESCRIPTION	UNIT WT. #	WT. #
4	SB3	Stiffener Bar	50	200
8	SB1	"	35	280
2	RP1	Ballast Retainer R	191	382
2	RP2	"	191	382
4	RP3	"	15	60
104	W1	Washer	6	624
1	CF4	Cross Frame	420	420
4	SB2	Stiffener Bar	83	332
2	EPI	End Plate	107	214
2	CP1	Cover Plate	131	262
2	CP2	"	125	250
2	SPI	Sole Plate	126	252
2	SP2	"	126	252
2	BP1	Bearing R	170	340
2	BP2	"	187	374
Total Wt.				4624

PA 9260 10-22-1969  
 NORFOLK & WESTERN RY. CO.

STRUCTURE: BRIDGE 530  
 LOCATION: ROCKFIELD, IND.  
 DIVISION: DECATUR

SCALE: 1/4" = 1'-0"  
 DATE: 5-29-68  
 DRAWN BY: CFH  
 CHECKED BY:  
 REVISED:

STEEL DETAILS  
 EAST SPAN

SHEET NO.	NO. OF SHEETS
5	5

QUANTITIES BY  
 CHECKED BY: