

PURDUE AGRICULTURAL AND BIOLOGICAL ENGINEERING BUILDING
PROGRESS PHOTOS FOR WEEK ENDING 12/19/18



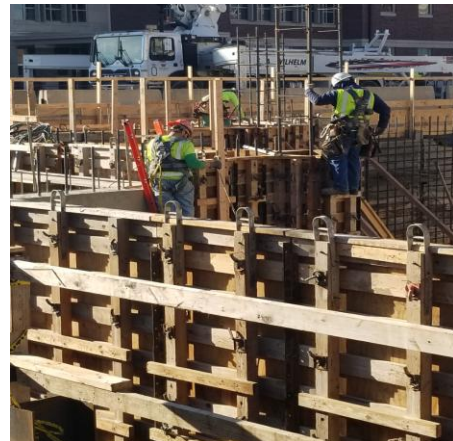
Renovation Building – 1st Floor facing East



Renovation Building – 2nd Floor facing West



Concrete from NE corner facing SW



Concrete Formwork – SE corner



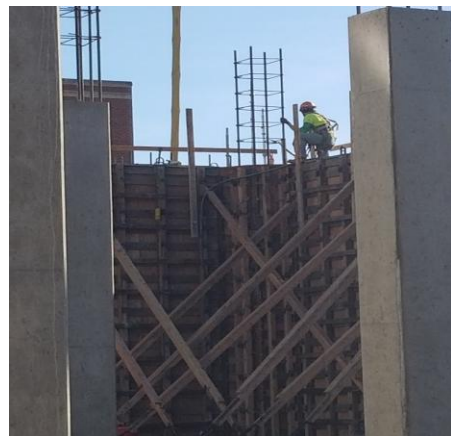
Concrete Work – facing West



Concrete Wall and Columns – North Wall



Electrical Site Work



Concrete Formwork – SE corner