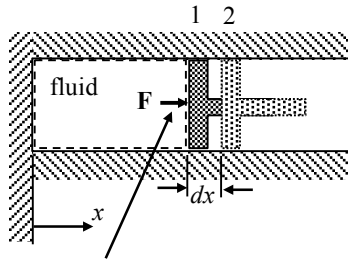


Work due to Pressure, Shafts, Springs, and Electricity

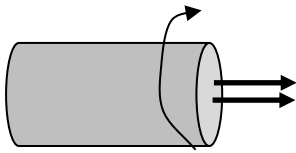
Work done on a piston during expansion of a fluid



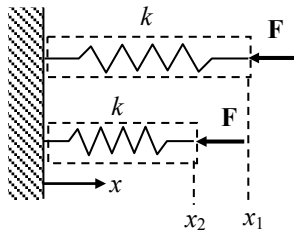
pressure force the system
exerts on the face of the
piston: $F = pA$

where p is the pressure at
the piston face and A is the
area of the piston face

Power required to rotate a shaft



Work required to compress a spring



Power required to move electrons across an electric field potential